

Construction

Extruded aluminum housing. Nominal 4' or 8' illuminated sections.

Louver

Semi-specular aluminum parabolic baffle.

Electrical

120, 277, 347 or Universal Voltage electronic ballast. Luminaires and electrical components certified to UL and CUL standards.

Finish

Durable, low gloss, white, powder coated acrylic finish.

Mounting

Surface.

ORDERING INFORMATION:

Sample number: 66DS-2T8-40-2EB-SI-1EM-S58

Series

66=Omni

Light Output

D=Direct

Mounting

S=Surface

Number of Lamps (per cross section) (not included)

1=1 Lamp 2=2 Lamps

Lamp Type

T8 T5 T5HO

Run Length

Overall Nominal Run Length ___ft. (Any combination of 8', 6', 4' and 3' sections)

Voltage ¹

1=120V 2=277V 3=347V U=Universal

Ballast

EB=Electronic Ballast (Standard) DB=Dimming Ballast

Switching

SI=Single Switching DU=Dual Switching

Emergency

EM=Emergency Pack (Consult Factory)

Fusing

GLR GMF

Shielding

S58=KSH-12 Clear Acrylic Prismatic Lens

S79=Semi-specular Aluminum Parabolic Baffle

¹ Due to various constraints, some options may not be combined with others.

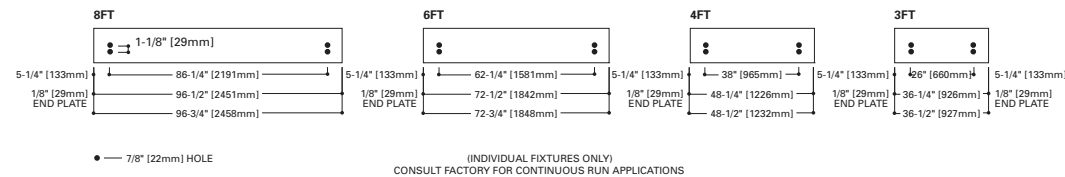


OMNI 66-DS

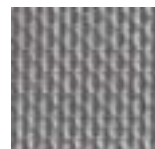
DIRECT

- Direct light distribution.
- T5 and T8 lamping.
- Extruded aluminum housing, nominal 4' and 8' illuminated sections.
- Parabolic louver designed for continuous unbroken appearance.
- Pearlescent low glare louver finish.
- .125" thick aluminum end caps.
- Selection of 2 light diffuser options

MOUNTING INFORMATION



SHIELDING OPTIONS



S58 Acrylic Lens



S79 Parabolic Baffle

NOTES: For complete product data, refer to the Neo-Ray Specification Binder. Specifications and dimensions subject to change without notice. Products may be modified for use in international markets. Please contact your Cooper Lighting Sales Representative for availability and ordering information.