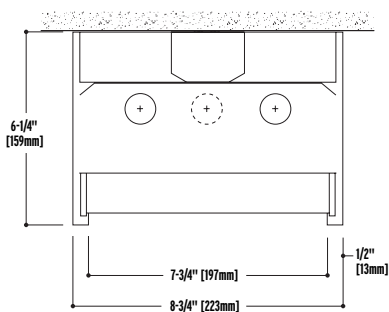


## NEO-RAY™

GEO  
44-DS

## DIRECT

- Direct light distribution.
- The light is continuous and unbroken.
- Die formed steel housing, nominal illuminated sections 3', 4', 6' and 8'.
- Runs provided to the nearest foot.
- Patterns are formed by butting standard sections.
- Selection of diffuser options.
- Rigid 'U' shaped trim is double formed with 3/8" regressed soft lit edge.
- Housings may be special ordered custom finished.



## Construction

20-gauge steel housing. Nominal 3', 4', 6' or 8' illuminated sections.

## End Caps

20-gauge steel construction.

## Shielding

White bold baffle louver. White acrylic diffuser. Prismatic acrylic lens. Parabolic baffle.

## Electrical

120, 277, 347 or Universal Voltage electronic ballast. Fixtures and electrical components certified to UL and CUL standards.

## Finish

Durable, low gloss, white, powder coated acrylic finish.

## Mounting

Surface.

## ORDERING INFORMATION:

Sample number: 44DS-2T8-56-2EB-SI-S72

## Series

44=Geo

## Light Output

D=Direct

## Mounting

S=Surface

## Number of Lamps (per cross section) (not included)

1=1 Lamp

2=2 Lamps

3=3 Lamps

## Lamp Type

T8

T5

T5HO

## Run Length

Overall Nominal Run Length\_\_ft. (Any combination of 8', 6', 4' and 3' sections)

Voltage<sup>1</sup>

1=120V

2=277V

3=347V

U=Universal

## Ballast

EB=Electronic Ballast (Standard)

DB=Dimming Ballast

## Switching

SI=Single Switching

DU=Dual Switching

## Emergency

EM=Emergency Pack (Consult Factory)

## Fusing

GLR

GMF

## Shielding

S22=White Acrylic Diffuser

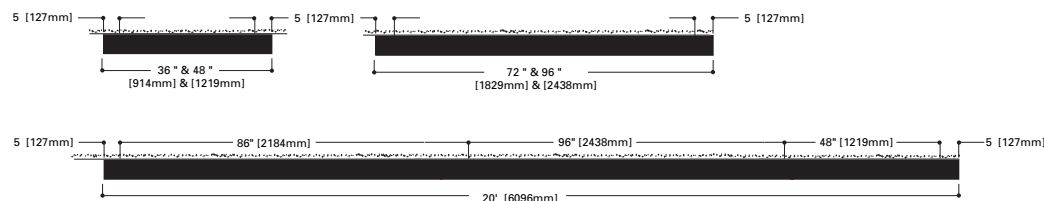
S72=White Bold Baffle

S58=KSH-12 Clear Acrylic Prismatic Lens

S79=Semi-specular Aluminum Parabolic Baffle

<sup>1</sup> Due to various constraints, some options may not be combined with others.

## MOUNTING INFORMATION



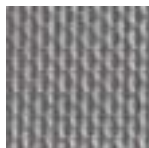
ILLUMINATED PATTERNS ARE PROVIDED  
IN 1 FOOT INCREMENTS PLUS 7 1/4" [185mm]

90° MITERED CORNER

## SHIELDING OPTIONS



S22 Acrylic Diffuser



S58 Acrylic Lens



S72 Bold Baffle



S79 Parabolic Baffle

NOTES: For complete product data, refer to the Neo-Ray Specification Binder. Specifications and dimensions subject to change without notice. Products may be modified for use in international markets. Please contact your Cooper Lighting Sales Representative for availability and ordering information.