

DESCRIPTION

Series 44 offers individual or continuous illuminated runs and patterns; each fixture is uniquely suited to achieve many functional and aesthetic spatial effects.

Features:

- The light is continuous and unbroken.
- Individual units and runs are provided to the nearest foot.
- Patterns are created by butting standard length fixtures.
- Rigid "U" shaped trim is double formed with a 3/8" regress soft lit edge.
- Housing may be ordered custom finished.

Catalog #		Type
Project		
Comments		Date
Prepared by		

SPECIFICATION FEATURES

A ... Construction

20-gauge steel housing. Nominal 3', 4', 6' or 8' illuminated sections.

End Caps

20-gauge steel construction.

B ... Shielding

White bold baffle louver. White acrylic diffuser. Prismatic acrylic lens. Parabolic baffle.

C ... Electrical

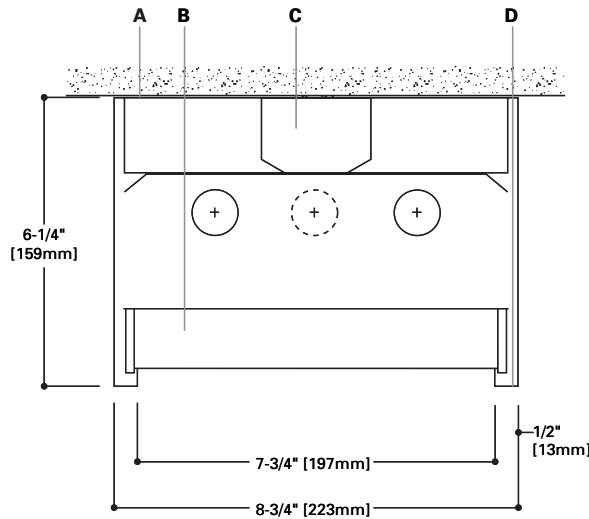
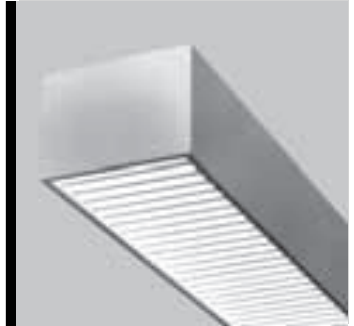
120, 277, 347 or Universal Voltage electronic ballast. Fixtures and electrical components certified to UL and CUL standards.

D ... Finish

Durable, low gloss, white, powder coated acrylic finish.

Mounting

Surface.



Geo 44-DS

1, 2 & 3T8
1, 2 & 3T5
1, 2 & 3T5HO

Surface
Direct

Light Distribution:
Indirect - 0.0%
Direct - 100.0%

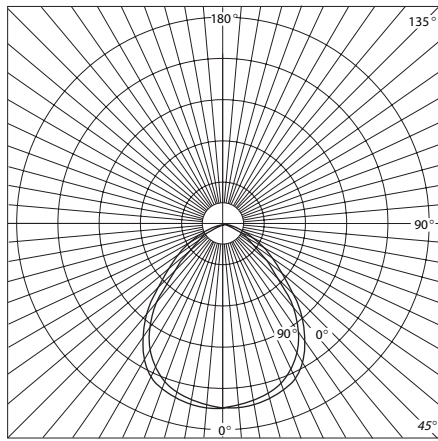
ORDERING INFORMATION

Sample Number: S44DS/2T8/84/1EB-DU

Series 44= Geo	Light Output D= Direct Mounting S= Surface	Number of Lamps 1= 1 Lamp 2= 2 Lamps 3= 3 Lamps	Lamp Type T8 T5 T5HO	Voltage ¹ 1= 120V 2= 277V 3= 347V U= Universal	Ballast EB=Electronic Ballast (Standard) DB=Dimming Ballast	Emergency EM=Emergency Pack (Consult Factory)	Shielding Options S22= White Acrylic Diffuser with mullions S72= White Bold Baffle S58= KSH-12 Clear Acrylic Prismatic Lens with mullions S79= Semi-specular Aluminum Parabolic Baffle
Notes:			Run Length Overall Nominal Run Length ___ ft. (Any combination of 8', 6', 4', and 3' sections)	Switching Options SI= Single Switching DU= Dual Switching	Fusing GLR GMF		

¹ Due to various constraints, some options may not be combined with others. Please consult your Cooper Lighting Representative for availability.

PHOTOMETRICS



44DS
 (2) F40T12RS/WW
 3200 Lumens
 Efficiency 59.0%
 Test Report
 #3016.0

Coefficients of Utilization

rc	Effective floor cavity reflectance									
	80%			50%			30%			
	70	50	30	10	50	30	10	50	30	10
rw	70	50	30	10	50	30	10	50	30	10
RCR										
1	66	63	61	60	60	58	57	57	56	55
2	61	57	54	51	54	52	50	52	50	49
3	57	52	48	45	49	46	44	48	44	43
4	53	47	43	39	45	41	39	45	41	38
5	49	42	38	34	40	37	34	39	36	34
6	45	39	34	31	37	33	30	36	33	30
7	42	35	30	27	34	30	27	33	29	27
8	39	32	27	24	31	27	24	30	26	24
9	36	29	24	21	28	24	21	27	23	21
10	33	26	22	19	25	21	19	25	21	19

Candela

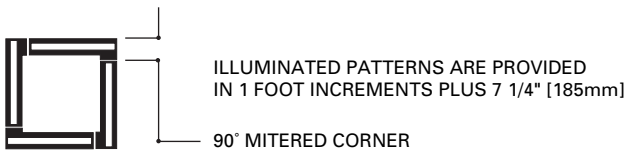
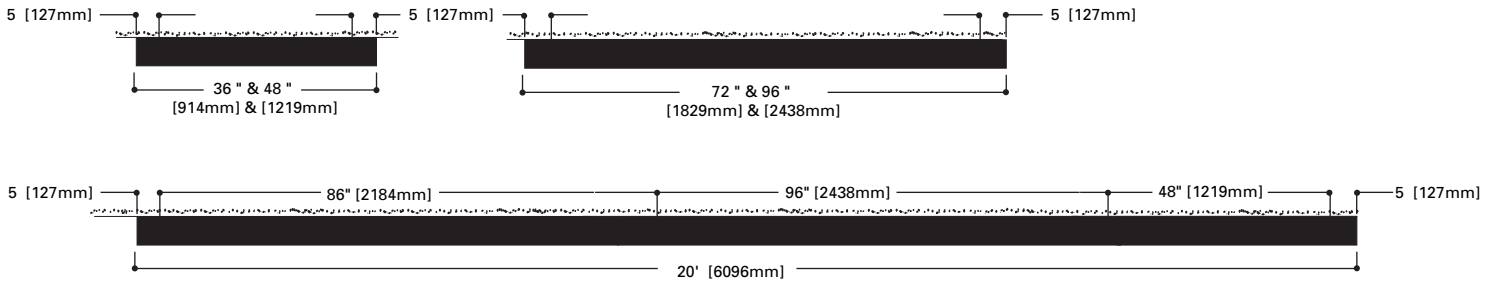
Angle	Along II	45°	Across ⊥
0	1824	1824	1824
5	1837	1832	1833
10	1793	1782	1768
15	1784	1759	1734
20	1752	1710	1683
25	1656	1600	1590
30	1586	1551	1555
35	1393	1401	1348
40	1182	1197	1101
45	879	895	799
50	696	663	600
55	553	451	469
60	423	281	369
65	311	182	274
70	181	117	173
75	104	100	109
80	66	84	65
85	38	47	46
90	0	0	0

Zonal Lumen Summary

Zone	Lumens	%Lamp	%Fixture
0-30	1419	22.2	37.6
0-40	2287	35.7	60.6
0-60	3398	53.1	90.0
0-90	3776	59.0	100.0
90-180	0	0.0	0.0
0-180	3776	59.0	100.0

Total Luminaire Efficiency = 59.0%

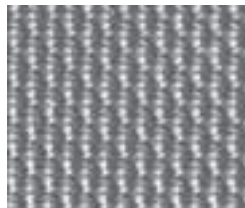
MOUNTING INFORMATION



SHIELDING INFORMATION



S22 Acrylic Diffuser
 3/16" thick, matte white finish with mullion, no light leaks.



S58 Acrylic Lens
 1/8" thick, clear acrylic prismatic lens.



S72 Bold Baffle
 1" high x 1.2" o.c., 3/16" thick aluminum baffle, continuous and unbroken, no visible joints.



S79 Parabolic Baffle
 1-1/4" high blades. 2.4" o.c., semi-specular lo-brightness Pearlescent aluminum baffle. Continuous and unbroken, no visible joints.