

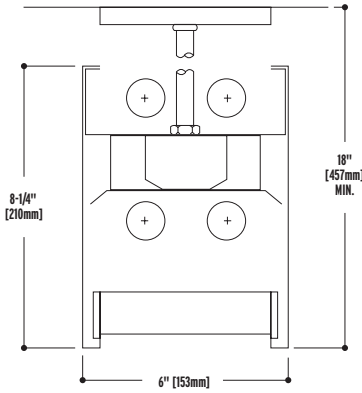
NEO-RAY™



GEO 14-DIP

DIRECT-INDIRECT

- Direct-indirect light distribution.
- The light is continuous and unbroken.
- Discrete direct and indirect lighting for 3 distinct distributions (specify dual switching).
- Die formed steel housing, nominal illuminated sections 3', 4', 6' and 8'.
- Rigid 'U' shaped double formed trim with 3/8" regress soft lit edge.
- Housings may be special ordered custom finished.
- Runs provided to the nearest foot.
- Patterns are formed by butting standard sections.
- Selection of 4 light diffuser options.



Construction: 20-gauge steel housing. Nominal 3', 4', 6' or 8' illuminated sections.

Shielding: White bold baffle louver. White acrylic diffuser. Prismatic acrylic lens. Parabolic baffle shielding.

Electrical: 120, 277, 347 or Universal Voltage electronic ballast. Fixtures and electrical components certified to UL and CUL standards.

Finish: Durable, low gloss, white, powder coated acrylic finish.

End Caps: 20-gauge steel construction.

Mounting: Pendant with single stem (standard) or single cable. Canopy: Round 5-1/2" diameter.

ORDERING INFORMATION:
Sample number: 14DIP-21T8-ST40-1EB-SI-S58

Series
14=Geo

Light Output
DIP=Direct-Indirect Pendant

Number of Lamps Up (not included)
1=1 Lamp 2=2 Lamps

Number of Lamps Down (not included)
1=1 Lamp 2=2 Lamps

Lamp Type
T8 T5 T5HO

Pendant Type
SC=Single Cable ST=Single Stem²

Run Length
Overall Nominal Run Length__ft. (Any combination of 8', 6', 4' and 3' sections)

Voltage¹
1=120V 2=277V 3=347V U=Universal

Ballast
EB=Electronic Ballast (Standard) DB=Dimming Ballast

Switching
SI=Single Switching DU=Dual Switching

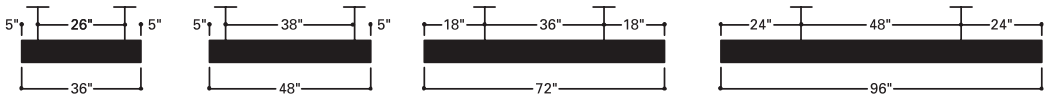
Emergency
EM=Emergency Pack (Consult Factory)

Fusing
GLR GMF

Shielding
S22=White Acrylic Diffuser
S72=White Bold Baffle
S58=KSH-12 Clear Acrylic Prismatic Lens
S79=Semi-Specular Aluminum Parabolic Baffle

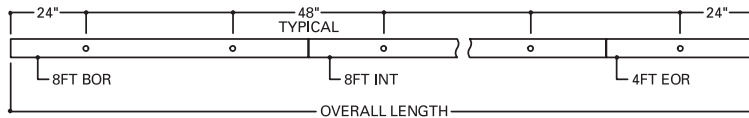
¹ Due to various constraints, some options may not be combined with others.
² Available with 7" or earthquake 45° swivel canopy assembly.

MOUNTING

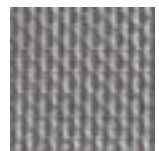


(INDIVIDUAL FIXTURE ONLY)
CONSULT FACTORY FOR CONTINUOUS
RUN APPLICATIONS

TYPICAL STEM LOCATIONS



S22 Acrylic Diffuser



S58 Acrylic Lens



S72 Bold Baffle



S79 Parabolic Baffle

NOTES: For complete product data, refer to the Neo-Ray Specification Binder. Specifications and dimensions subject to change without notice. Products may be modified for use in international markets. Please contact your Cooper Lighting Sales Representative for availability and ordering information.