

Construction

20-gauge steel housing. Nominal 8', 6', 4' or 3' illuminated sections.

Shielding

Acrylic diffuser or lens, parabolic or bold baffle shielding.

Electrical

120, 277, 347 or Universal Voltage electronic ballast. Fixtures and electrical components certified to UL and CUL standards.

Finish

Durable, low gloss, white, powder coated acrylic finish.

Mounting

Recessed.

ORDERING INFORMATION:

Sample number: 82R-2T5H0-SR-36-2EB-SI-S22

Series

82 (Sheetrock ceiling)

Mounting

R=Recessed

Number of Lamps (not included)

1=1 Lamp **2**=2 Lamps

Lamp Type (Length)

T8 **T5** **T5H0**

Ceiling Type

ETG=Exposed T-Grid **SR**=Sheet Rock (Flanged)

Run Length

Overall Nominal Run Length__ft. [8', 6', 4' or 3']

Voltage ¹

1=120V **2**=277V **3**=347V **U**=Universal

Ballast

EB=Electronic Ballast (Standard) **DB**=Dimming Ballast

Switching

SI=Single Switching **DU**=Dual Switching

Emergency

EM=Emergency Pack (Consult Factory)

Fusing

GLR **GMF**

Shielding

S22=White Acrylic Diffuser with Mullion

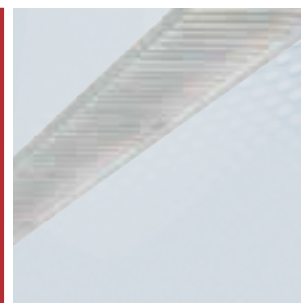
S58=KSH-12 Clear Acrylic Prismatic Lens with Mullion

S72=White Bold Baffle

S79=Semi-Specular Aluminum Parabolic Baffle

¹ Due to various constraints, some options may not be combined with others.

² Can be left blank or more than one option may be available, consult factory.



82

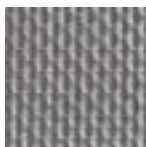
DIRECT

- Use individually or in runs for continuous strips of even light
- Runs are provided to nearest foot through combination of standard section
- 90° illuminated corners are factory mitered & welded
- Variety of shielding media to select from

SHIELDING OPTIONS



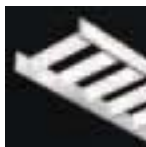
S22 Acrylic Diffuser



S58 Acrylic Lens



S72 Bold Baffle



S79 Parabolic Baffle