

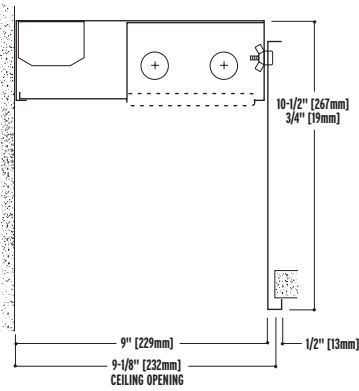
NEO-RAY™



72
71

DIRECT-INDIRECT

- Direct wall wash light distribution.
- The light is continuous and unbroken.
- T5 and T8 lamping.
- Die formed steel housing,
- Nominal illuminated sections 3', 4', 6' and 8'.
- Runs are field adjustable.
- 90 degree mitered corners.



Construction

20-gauge steel housing.

Shielding

Clear prismatic lens, lateral baffle.

Electrical

120, 277, 347 or Universal Voltage electronic ballast. Fixtures and electrical components certified to UL and CUL standards.

Finish

Durable, low gloss, white, powder coated acrylic finish.

Mounting

Recessed.

ORDERING INFORMATION:

Sample number: 72-2T8-8-1EB-SI

Series

72=Perimeter 71=Perimeter with light baffle option

Number of Lamps (not included)

1=1 Lamp 2=2 Lamps

Lamp Type

T8 T5 T5HO

Run Length

Overall Nominal Run Length__ft. (Any combination of 8', 6', 4' and 3' sections)

Voltage¹

1=120V 2=277V 3=347V U=Universal

Ballast

EB=Electronic Ballast (Standard) DB=Dimming Ballast

Switching

SI=Single Switching DU=Dual Switching

Emergency

EM=Emergency Pack (Consult Factory)

Fusing

GLR GMF

Shielding (for Series 71 only)

S58=KSH-12 Clear Acrylic Prismatic Lens

S62A=Lateral Aluminum Baffle with Clear Prismatic Lens Overlay

¹ Due to various constraints, some options may not be combined with others.

RUNS AND PATTERNS



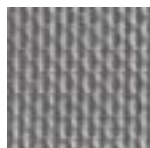
PATTERNS ARE PROVIDED IN 1FT. INCREMENTS PLUS FILL-IN SECTION, FIELD CUT TO SUIT



9" X 9" CORNER BOX

PATTERNS ARE PROVIDED IN 1FT. INCREMENTS PLUS FIELD CUT FILL-IN SECTION AND MITERED CORNER

SHIELDING OPTIONS



S58 Acrylic Lens



S62A Lateral Aluminum Baffle with Clear Prismatic Lens Overlay

NOTES: For complete product data, refer to the Neo-Ray Specification Binder. Specifications and dimensions subject to change without notice. Products may be modified for use in international markets. Please contact your Cooper Lighting Sales Representative for availability and ordering information.