

ORDERING INFORMATION:

Sample number: 49DIP-2T8-ST40-1EB-SI-S58

Series

49=Geo DIP 44=Geo DP 40=Geo IP

Light Output

DIP=Direct-Indirect Pendant (49)
 DP=Direct Pendant (44)
 IP=Indirect Pendant (40)

Number of Lamps (per cross section) (not included)

1=1 Lamp (44, 49) 2=2 Lamps (40, 44, 49) 3=3 Lamps (44, 49)

Lamp Type

T8 T5 T5H0

Pendant Type

ST=Single Stem² SC=Single Cable

Run Length

Overall Nominal Run Length__ft. (Any combination of 8', 6', 4' and 3' sections)

Voltage¹

1=120V 2=277V 3=347V U=Universal

Ballast

EB=Electronic Ballast (Standard) DB=Dimming Ballast

Switching

SI=Single Switching DU=Dual Switching

Emergency

EM=Emergency Pack (Consult Factory)

Fusing

GLR GMF

Shielding (*not available for 40 Indirect)

S22=White Acrylic Diffuser
 S72=White Bold Baffle
 S58=KSH-12 Clear Acrylic Prismatic Lens
 S79=Semi-Specular Aluminum Parabolic Baffle

1 Due to various constraints, some options may not be combined with others.
 2 Available with 7° or earthquake 45° swivel canopy assembly.

Construction: 20-gauge steel housing. Nominal 3', 4', 6' or 8' illuminated sections.

End Caps: 20-gauge steel construction.

Shielding: White bold baffle louver. White acrylic diffuser. Clear prismatic acrylic lens. Parabolic baffle.

Electrical: 120, 277, 347 or Universal Voltage electronic ballast. Fixtures and electrical components certified to UL and CUL standards.

Finish: Durable, low gloss, white, powder coated acrylic finish.

Mounting: Pendant with single stem (standard) or single cable. Canopy: Round 5" diameter.



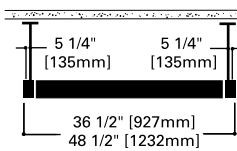
Geo 40IP



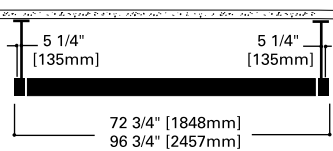
Geo 44DP

ROW CONFIGURATION

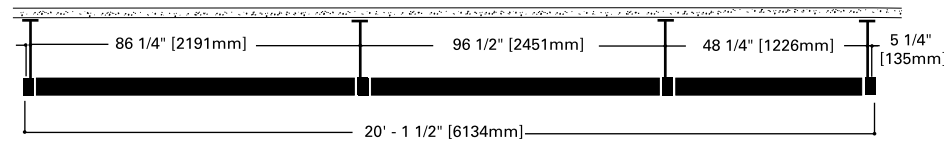
3' & 4' Section



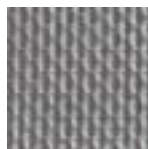
6' & 8' Section



20' Row



S22 Acrylic Diffuser



S58 Acrylic Lens

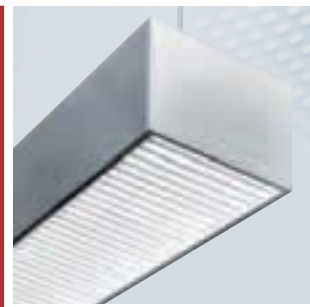


S72 Bold Baffle



S79 Parabolic Baffle

NOTES: For complete product data, refer to the Neo-Ray Specification Binder. Specifications and dimensions subject to change without notice. Products may be modified for use in international markets. Please contact your Cooper Lighting Sales Representative for availability and ordering information.



GEO
49-DIP
44-DP
40-IP

DIRECT-INDIRECT (49)
DIRECT (44)
INDIRECT (40)

- The light is continuous and unbroken.
- Die formed steel housing, nominal illuminated sections 3', 4', 6' and 8'.
- Rigid 'U' shaped double formed trim with 3/8" regress soft lit edge.
- Housings may be special ordered custom finished.
- Runs provided to the nearest foot.
- Patterns are formed by butting standard sections.
- Selection of 4 light diffuser options.