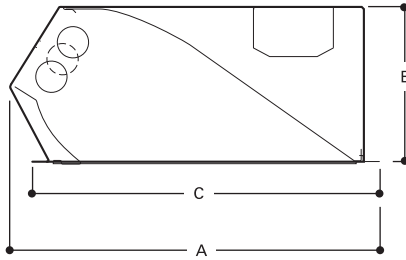


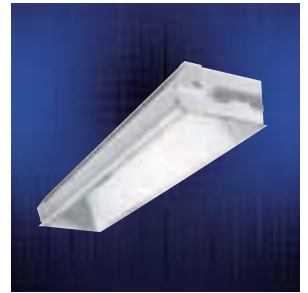
DIMENSIONS



| NOMINAL LENGTH | A | B | C |
|----------------|-----------------|----------------|-------------|
| 2' | 10-3/8" (273mm) | 4-5/8" (114mm) | 10" (254mm) |
| 4' | 10-3/8" (273mm) | 4-5/8" (114mm) | 10" (254mm) |

DESCRIPTION

The Metalux Horizon Recessed Wall Wash Series features recessed aesthetics and the latest in Energy Efficient Technology. The clean architectural design incorporates precision-formed aluminum reflector features that produces efficient, uniform and continuous vertical wall illumination. The Horizon Recessed Wall Wash Series is specifically designed for effective use in various retail, merchandising and commercial wall washing environments. Horizon is ideal for retail displays, showrooms, corridor walls, art lighting and the elimination of the "Cave Effect" in office lighting applications.



RWW SERIES

1' x 2 and 1' x 4'
Recessed Wall Wash

VERTICAL ILLUMINATION
LUMINAIRE

HORIZON™

ORDERING INFORMATION

SAMPLE NUMBER: RWW-232MI-120V-EB81-U

| | | | |
|--|--|--|---|
| Series RWW=Horizon Wall Wash | Reflector Finish MI=Specular Low Iridescent (Standard) I=Semi-Specular Low Iridescent | Options (See Options Section) | Packaging U=Unit Pack PALC=Job Pack, in carton |
| Number of Lamps (Not included) 1=1- Lamp 2=2- Lamp T1=4' Fixture with one Biax Lamp at each end | Voltage ⁽¹⁾ 120V=120 Volt 277V=277 Volt 347V=347 Volt UNV=Universal Voltage 120-277 ⁽²⁾ | Ballast Type ⁽¹⁾ Blank=Standard Magnetic Ballast (Biax & 20W) ER8 = T8 Electronic Program Rapid Start. Total Harmonic Distortion < 10% No. of Ballast 1, 2 or 3 EB8 = T8 Electronic Instant Start. Total Harmonic Distortion < 10% No. of Ballast 1, 2 or 3 EB8 /PLUS= T8 Electronic Instant Start. High Ballast Factor >1.13. Total Harmonic Distortion < 20% No. of Ballast 1, 2 or 3 EB5 = T5 Biax Electronic Instant Start. Total Harmonic Distortion < 20% No. of Ballast 1, 2 or 3 EB2 =T12 Electronic Rapid Start. No. of Ballast 1 or 2 EBT =T5 Linear Electronic Program Rapid Start Total Harmonic Distortion < 10% No. of Ballast 1, 2 or 3 DLS=Digital Lighting System Dimming (For complete details on generic or to specify manufacturer's ballast see pg. 469) | |
| Wattage (Length) 17=17W T8 (24") 14 T5=14W T5 (24") ⁽³⁾ 24 T5=24W T5/HO (24") ⁽³⁾ 54 T5=54W T5/HO (48") ⁽³⁾ 28 T5=28W T5 (48") ⁽³⁾ 32=32W T8 (48") BX40=40W Biax (24") ⁽³⁾ ⁽⁴⁾ BX50=50W Biax (24") ⁽³⁾ ⁽⁴⁾ BX55=55W Biax (24") ⁽³⁾ ⁽⁴⁾ | Options GL=Single Element Fuse GM=Double Element Fuse Emergency - for EM installed, see EM options table | | |

- Utilizes efficient fluorescent T8, T5 and biaxial lamp sources
- Available in 2' and 4' lengths
- Adjustable end support mounting brackets
- Optional baffle and lens accessories available, see Accessories section
- Easy ballast access from above or below ceiling
- Die formed housing of code gauge cold rolled steel
- Durable high reflective finish
- High performance specular and semi-specular low iridescent anodized aluminum reflectors
- Internal aluminum reflector optical assembly integrates an upper "scoop", lower "kick" and side reflector design
- Can be used in drywall applications in conjunction with drywall frame kit as necessary.
- UL/CUL Listed. Suitable for damp locations.

NOTES: ⁽¹⁾ Products also available in non-US voltages and frequencies for international markets. ⁽²⁾ UNV available in T5 and T8 linear only. Not available when specifying emergencies, voltage must be specific. ⁽³⁾ Electronic ballast only. ⁽⁴⁾ Biax only available in 1 lamp cross section.

For complete product data, reference the Fluorescent Specification binder. Specifications & dimensions subject to change without notice. Consult your Cooper Lighting Representative for availability and ordering information.