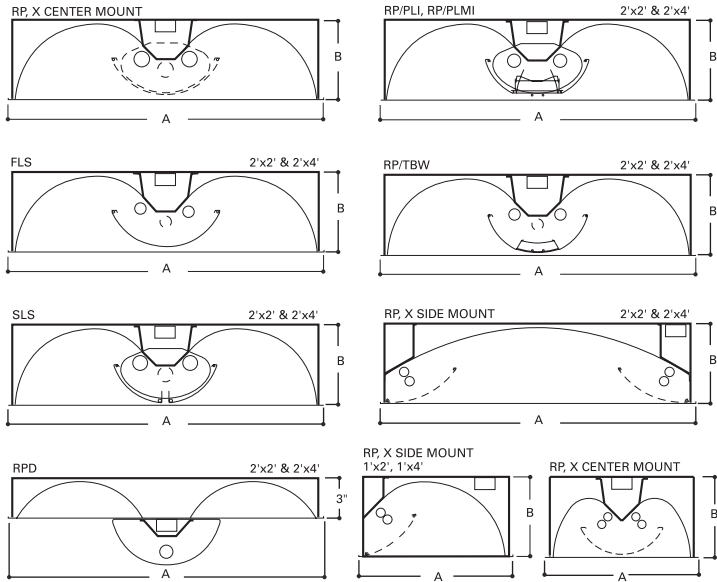


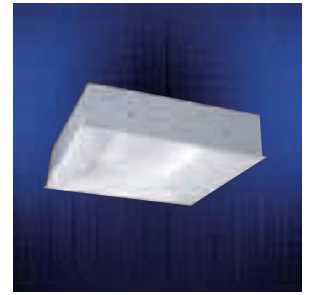
DIMENSIONS



NOMINAL SIZE	A	B
2' x 2'	23-3/4" (603mm)	6" (153mm)
2' x 4'	23-3/4" (603mm)	6" (153mm)
1' x 2'	11-5/8" (295mm)	6" (153mm)
1' x 4'	11-5/8" (295mm)	6" (153mm)

DESCRIPTION

The Ovation Series is a complete family of recessed direct/indirect luminaires featuring pleasant modern architectural styling, computer-designed optics and the latest energy efficient lamp and ballast technology. The luminaire combines matte white components and perforated direct lamp shields to provide optimum brightness control. All components are located above the ceiling plane for a clean architectural appearance in the finished space. Carefully balanced design elements combine to provide an efficient and exciting alternative to traditional general lighting. Ovation is a series of high performance luminaires designed for a variety of architectural applications. Ovation is an excellent choice for private offices, conference rooms, reception areas, retail stores, libraries, open offices, airports, classrooms, banks, restaurants, corridors and many other commercial applications.



RDI SERIES

1' x 2', 1' x 4', 2' x 2'
or 2' x 4'
1, 2, 3 or 4 Lamp
T5, T5HO, T8 or Biaxial

CENTER-MOUNT, SIDE-MOUNT OR ASYMMETRIC
RECESSED
DIRECT/INDIRECT

Ovation™

- Available with Biaxial, T8 and cutting-edge T5 and T5HO lamps
- Lamps and all hardware are completely shielded from view
- Far more efficient than the competition, the most efficient Recessed Direct/Indirect in the industry
- Available in center-mount and side mount lamp shield configurations
- Available in 1, 2, 3 and 4 lamp modules
- High reflectance matte white finish Painted-after-Fabrication for optimum uniformity, efficiency and glare control
- UL/CUL Listed. Suitable for damp locations.
- Can be used in drywall applications in conjunction with drywall frame kit as necessary.

ORDERING INFORMATION

SAMPLE NUMBER: 2RDI-2BX40RP-120V-EB51-U

<p>Leave Blank= 1' Width⁽²⁾ 2 = 2' Width</p> <p>Ovation Series RDI=Recessed Direct/Indirect</p> <p>Trim Type Leave Blank=Grid/Lay-in (Standard)</p> <p>Leave Blank=Center mounted Lamps (standard) S=Side Mounted Lamps ASY=Asymmetric</p>	<p>Number of Lamps (Not included)</p> <p>1= 1 Lamp 2= 2 Lamp 3= 3 Lamp 4= 4 Lamp</p> <p>T1=2'x4' Fixture with One Biax Lamp at Each End</p> <p>T2=2'x4' Fixture with Two Biax Lamps at Each End</p> <p>T3=2'x4' Fixture with Three Biax Lamps at Each End</p>	<p>Lamp Shield</p> <p>X=Solid Matte White RP=Round Perforated White Steel RP/TBW=Round Perforated White Steel w/Thin Blade White Baffle⁽¹⁾ RP/PLI=Round Perforated White Steel w/Semi-Specular Parabolic Baffle⁽¹⁾ RP/PLMI=Round Perforated White Steel w/Specular Parabolic Baffle⁽¹⁾ RPD=Round Perforated Steel Below Ceiling Lamp Shield⁽⁴⁾ RPD/TBW=Round Perforated Below Ceiling Lamp Shield with Thin Blade White Baffle⁽⁴⁾ FLS=Frosted Lamp Shield⁽¹⁾ SLS=Split Lamp Shield⁽¹⁾</p>	<p>Options (See Options Section)</p> <p>Ballast Type⁽²⁾</p> <p>Blank=Standard Magnetic Ballast (40W Biax only) EB8 = T8 Electronic Instant Start. Total Harmonic Distortion < 10% No. of Ballast 1, 2 or 3</p> <p>EB8 / PLUS= T8 Electronic Instant Start. High Ballast Factor >1.13. Total Harmonic Distortion < 20% No. of Ballast 1, 2 or 3</p> <p>ER8 = T8 Electronic Program Rapid Start. Total Harmonic Distortion < 10% No. of Ballast 1, 2 or 3</p> <p>EB5 = T5 Biax Electronic Instant Start. Total Harmonic Distortion < 20% No. of Ballast 1, 2 or 3</p> <p>TEB5 =T5 Biax Electronic Instant Start. Total Harmonic Distortion < 10% No. of Ballast 1, 2 or 3</p> <p>EBT =T5 Linear Electronic Program Rapid Start Total Harmonic Distortion < 10% No. of Ballast 1,2 or 3</p> <p>(For complete details on generic or to specify manufacturer's ballast see pg. 469)</p>	<p>Packaging U=Unit Pack PALC=Job Pack, in carton</p>
	<p>Wattage (Length)</p> <p>17=17W T8 (24") 32=32W T8 (48") BX40=40W Biax (24") BX50=50W Biax (24")⁽¹⁾ BX55=55W Biax (24")⁽¹⁾ 14T5=14W T5 (24")⁽¹⁾ (6) 24T5=24W T5HO (24")⁽¹⁾ (6) 28T5=28W T5 (48")⁽¹⁾ (6) 54T5=54W T5HO (48")⁽¹⁾ (6)</p>	<p>Voltage⁽²⁾</p> <p>120V=120 Volt 277V=277 Volt 347V=347 Volt UNV=Universal Voltage 120-277</p> <p>Options</p> <p>GL=Single Element Fuse GM=Double Element Fuse Lamps - for lamps installed, see lamp options table Flex - for flex installed, see flex ordering table Emergency - for EM installed, see EM options table</p>		

NOTES: ⁽¹⁾ 2' x 2' and 2' x 4' Center Lamp Shield models only. ⁽²⁾ Products also available in non-US voltages and frequencies for international markets. ⁽³⁾ Not available when specifying emergencies, voltage must be specific. ⁽⁴⁾ Not available with Emergency Battery Pack.

For complete product data, reference the Fluorescent Specification binder. Specifications & dimensions subject to change without notice. Consult your Cooper Lighting Representative for availability and ordering information.