

# COOPER LIGHTING - METALUX®

## DESCRIPTION

The EIVM Series is an energy efficient family of industrials that feature premium performance and durability. The industrial series incorporates heavy duty, embossed, reflectors that precisely direct and effectively control light. The EIVM reflector is a unique design that was developed to prevent debris accumulation in special applications. The special deep center "V" reflector provides 30° crosswise shielding to minimize glare. The versatile EIVM Series can be installed using various mounting methods and numerous options and accessories are available. The EIVM Series can be utilized in simple task and area lighting to the most demanding specialized industrial applications with environmental requirements.

## SPECIFICATION FEATURES

### A ... Construction

Channel is code gauge prime cold rolled steel. Die formed with deep V-grooves for tong hanger. Die formed channel connector assures straight rows and continuity of ground through set screws. Lampholder mounting brackets are easily inserted with snap-in action.

### B ... Electrical\*

Ballast are CBM/ETL Class "P" and positively secured by mounting bolts. Metal clad lampholders are spring loaded for turret safety. UL/CUL listed. Suitable for damp locations.

### C ... Finish

Multistage iron phosphate pretreatment ensures maximum bonding and rust inhibitor. Lighting grade, baked white enamel finish.

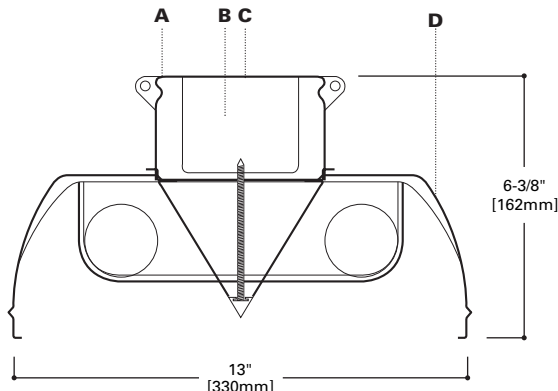
### D ... Reflectors

Painted after fabrication. Die formed code gauge steel. Deep draw full width ribs formed with one press stroke. Side flanges lend strength with downward turn. Reflector design prevents lint, dust and debris buildup. Easily cleaned. Baked white enamel 13" width. Four foot sections. Reflector Center "V" provides 30° crosswise shielding and reduces glare. Reflector and Center "V" retained by positive mounting bolt. Reflector aligners provided. Standard with 20% uplight (EIVM). Closed top reflector (ECIVM).

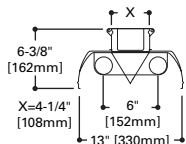


**EIVM**  
248PG  
296PG  
248VHO  
296VHO

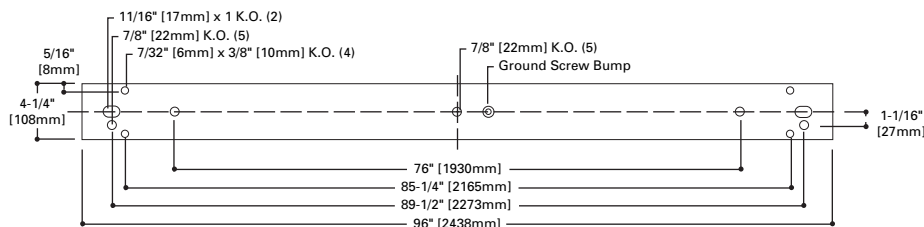
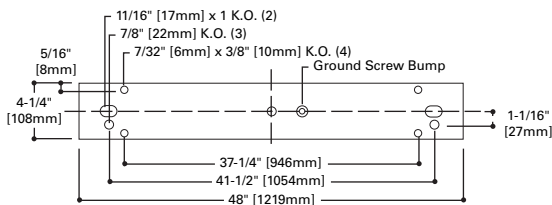
**4' OR 8' INDUSTRIAL**  
**2 LAMP**  
**POWER GROOVE, 1500 MA**  
**VERY HIGH OUTPUT,**  
**1500MA**  
**Environmental Heavy Duty**  
**Industrial**



## LAMP CONFIGURATIONS



## MOUNTING DATA



## ENERGY DATA

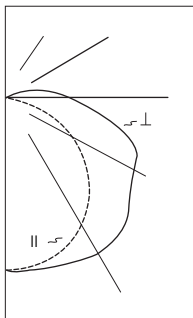
Input Watts:  
**STD Ballast & STD Lamps**  
248PG (242)  
248VHO (242)  
296PG (440)  
296VHO (440)  
Luminaire Efficacy Rating  
**LER = FI-60**  
**Catalog Number: EIVM-296PG**  
**Yearly Cost of 1000 lumens,**  
**3000 hrs at .08 KWH = \$4.00**

\*Reference the lamp/ballast data in the Technical Section for specific lamp/ballast requirements.

**LAMPS CONTAIN MERCURY. DISPOSE ACCORDING TO LOCAL, STATE OR FEDERAL LAWS**

**LINEAR DISCONNECT**  
Safe and convenient means of disconnecting power





### EIVM-296PG Energy Saving Ballast

F96PG17/CW Lamps  
15300 Lumens

Spacing criterion:  
(H) 1.3 x mounting  
height, (L) 1.3 x  
mounting height  
Efficiency 86.0%

Test Report:  
EIVM296PG.IES

LER = FI-60

Yearly Cost of 1000  
lumens, 3000 hrs at  
.08 KWH = \$4.00

### Coefficients of Utilization

Effective floor cavity reflectance										20%									
rc	80%				70%				50%			30%			10%			0%	
rw	70	50	30	10	70	50	30	10	50	30	10	50	30	10	50	30	10	0	
RCR																			
0	98	98	98	98	93	93	93	93	85	85	85	78	78	78	71	71	71	67	
1	90	86	82	79	85	82	79	76	75	73	70	69	67	65	63	61	60	57	
2	82	75	70	65	78	72	67	63	66	62	59	60	57	54	55	53	51	48	
3	75	66	59	54	71	63	57	53	58	53	49	53	49	46	49	46	43	40	
4	68	59	51	46	65	56	50	45	52	46	42	48	43	40	44	40	37	35	
5	63	52	45	39	60	50	43	38	46	41	36	43	38	34	39	35	32	30	
6	58	47	40	34	55	45	38	33	42	36	32	39	34	30	36	32	28	26	
7	54	42	35	30	51	41	34	29	38	32	28	35	30	27	32	28	25	23	
8	50	39	32	27	47	37	31	26	35	29	25	32	27	24	30	26	22	21	
9	46	35	29	24	44	34	28	23	32	26	22	30	25	21	27	23	20	19	
10	43	33	26	22	41	31	25	21	29	24	20	27	23	19	25	21	18	17	

### Zonal Lumen Summary

Zone	Lumens	%Lamp	%Fixture
0-30	5776	18.9	22.0
0-40	9545	31.2	36.3
0-60	16903	55.2	64.2
0-90	20600	67.3	78.3
90-180	5713	18.7	21.7
0-180	26313	86.0	100.0

### Candela

Angle	Along H	45°	Across L
0	7285	7285	7285
10	7217	7205	7269
20	6885	6923	6944
30	6347	6364	6322
40	5631	5584	5605
50	4726	4650	4052
60	3634	3037	2235
70	2397	1327	956
80	1075	478	486
90	36	122	142
100	271	227	218
110	698	418	419
120	1111	689	636
130	1500	1031	899
140	1827	1345	1230
150	2085	1632	1507
160	2270	2171	1923
170	2371	2357	2384
180	2396	2396	2396

### ORDERING INFORMATION

SAMPLE NUMBER: EIVM-296PG-120V-EB81-U

<b>Tandem</b> Blank=4' Length 8T=8' Length	<b>Number of Lamps</b> 2 Lamps (Not included)	<b>Options</b> GL=Single Element Fuse GM=Double Element Fuse Emergency=EM Installed	<b>Ballast Type<sup>(1)</sup></b> <b>EB8</b> = T8 Electronic Instant Start. Total Harmonic Distortion < 10% No. of Ballast 1, 2 or 3 <b>EB8 /PLUS</b> = T8 Electronic Instant Start. High Ballast Factor >1.13. Total Harmonic Distortion < 20% No. of Ballast 1, 2 or 3 <b>ER8</b> = T8 Electronic Program Rapid Start. Total Harmonic Distortion < 10% No. of Ballast 1, 2 or 3 <b>EB2</b> = T12 Electronic Rapid Start. No. of Ballast 1 or 2	<b>Options</b> <b>RIF1</b> =Radio Interference Suppressor <b>6-3/18 SJT-C&amp;P-515P</b> =Cord & Plug (120V) <b>6-3/18 SJT-C&amp;P-</b> <b>L715P</b> =Cord & Plug (277V) <b>PI/CPI</b> =Plug-In Option <b>TILW</b> =Tandem In-Line Wiring Option (Consult TILW Option Catalog Page) <b>POX</b> =Porlux Finish (See options & accessories)	<b>Packaging</b> <b>U</b> =Unit Pack <b>4B</b> =4 Bulk
<b>Series</b> <b>EIVM</b> =Apertured Reflector <b>EICM</b> =Closed Top Reflector	<b>Wattage (Length)</b> <b>48VHO</b> =110W (48") VHO <b>96VHO</b> =185/215W (96") VHO <b>96PG</b> =182/215W (96") PG				
	<b>Voltage<sup>(1)</sup></b> <b>120V</b> =120 Volt <b>277V</b> =277 Volt <b>347V</b> =347 Volt				

NOTES: <sup>(1)</sup>Products also available in non-US voltages and frequencies for international markets.

<sup>(2)</sup>Silver lining not available on fixtures with HO, VHO or PG.

Specifications & dimensions subject to change without notice. Consult your Cooper Lighting Representative for availability and ordering information.

### ACCESSORIES (Order Separately)

**A1B/Spacer-U**=Spacer 1-1/2" to 2-1/2" from ceiling  
(Use 2 per fixture)  
**ATG-4**=Tong Hanger (Use 2 per fixture)  
**SCF**=Fixed Stem Set (Specify Length)  
**SCS**=Swivel Stem Set (Specify Length)  
**SCA**=Adjustable 48" Stem Set  
**AYC-Chain/Set-U**=Chain Hanger Set (Use 1 set per fixture)  
**WG/DI-4FT-U**=Wire Guard  
**WGG/DI-4FT-U**=Wire Gym Guard  
**DI2**=Long Connector  
**CEP**=Closed End Plate  
 (Note: Reflector will extend 1/4" past the end plate).

(Additional Accessories Available. See Options and Accessories Section).

### SHIPPING INFORMATION

Catalog No.	Wt.
EIVM-248PG <sup>1</sup>	40 lbs.
EIVM-296PG <sup>1</sup>	72 lbs.