



L1651, L1652

Halo Recessed Power Trac housing accommodates Miniature or Halo-2 Power-Trac section.

- **L1651**—4' Housing Recessed Channel - actual length 44" (1118mm).
Finish: White (P)
- **L1652**—8' Housing Recessed Channel - actual length 92" (2337mm).
Finish: White (P)

RECESSED POWER-TRAC

Recessed Power-Trac Housing to Achieve the "Designed-In" Look

For a clean, flush-to-ceiling "designed in" trac lighting look. Unique Recessed Power-Trac Housing accommodates Halo Miniature (single circuit) or Halo-2 (two circuit) Power-Trac sections. It is compatible with drywall, suspended standard 15/16" or 9/16" T-grid, tegular ceilings, and most other ceiling materials.

See drawings A, B, C.

Offered in 4' or 8' lengths. Channel lengths can be field cut to suit application. Housing will accommodate straight runs L, T, or X configurations. System allows power feed connections from live ends or connectors. Lightweight housing is easy to install. Complete system can be installed by one person before making electrical connections. First, the Power-Trac housing is installed to the finished ceiling. Power supply connections are made. Then the Miniature or Halo-2 Power-Trac sections are placed in the housing.

Recessed Power-Trac Housing can also be used as a raceway with L937 Raceway Cover accessory. This allows additional Power-Trac sections to be fed from one outlet box. Perfect for commercial or long-run installations!

Size

Recessed Power-Trac Housing is 1 17/32" (39mm) deep with a 3 3/8" (86mm) wide flange area.

Finish

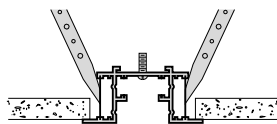
Available in white.

Connectors/Housings

Single circuit and two circuit connectors available. L's, T's and X's allow track to be assembled in any pattern.

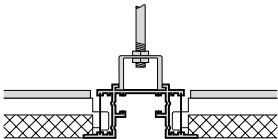
Specifications

Housing is extruded aluminum with .070" nominal wall thickness.



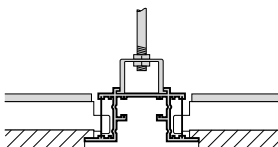
A. Drywall

Mount as shown. Use Lathing Tab to fasten Housing to ceiling support members. Set housing so flanges overlap finished ceiling.



B. Standard Tile

Mount as shown. Use Recessed Housing Hanger to suspend housing. Set housing so flanges overlap finished ceiling.



C. Regular Tile

Mount as shown. Use Recessed Housing Hanger to suspend housing.

Ceiling Detail

Housing layouts conform to standard ceiling grid modules and track lengths. Housing may be spaced on modular or non-modular intervals.

