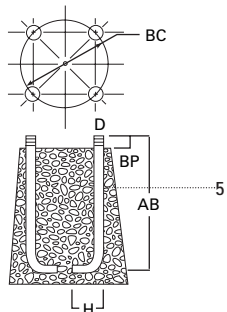
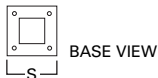
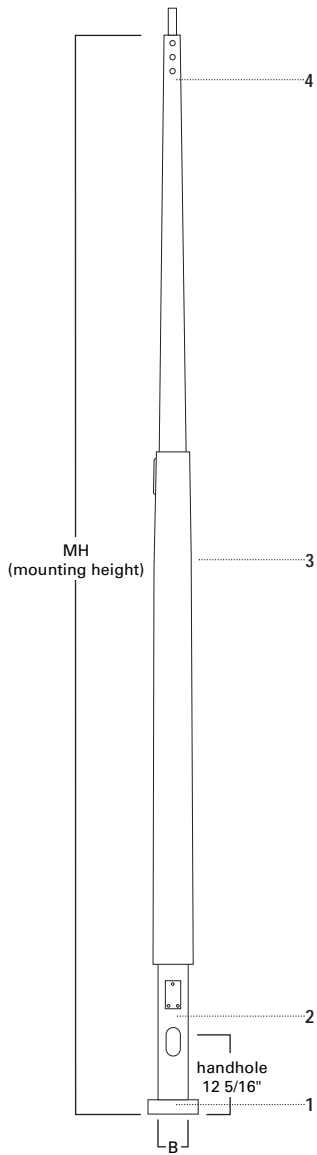


HTS HINGED TAPERED STEEL

20'—39' MOUNTING HEIGHT



SPECIFICATION FEATURES

- 1 ··· ASTM Grade steel base plate with ASTM A366 base cover.
- 2 ··· Hand hole assembly 3" x 5" on all HTS poles.
- 3 ··· Steel shaft 55,000 PSI. Shot blasted and painted with polyester powder coat.
- 4 ··· Drilled or Tenon (specify).
- 5 ··· Anchor bolt per ASTM A576 with (2) nuts, (2) flat washer, and (1) lock washer. Nuts, washers and threaded portion of bolt are hot dip galvanized. 3" hook for 3/4" bolt. 4" hook for 1" bolt.

FOUR BOLT ANCHORAGE [See ordering information]

- BC=Bolt Circle
- BP=Bolt Projection
- AB=Bolt Dimensions
- D=Bolt Diameter
- H=Bolt Dimensions

FINISH COLORS [See ordering information]

- F=Dark Bronze
- G=Galvanized
- V=Grey
- W=White
- Y=Black

WARNING: THE USE OF UNAUTHORIZED ACCESSORIES SUCH AS BANNERS, SIGNS OR PENNANTS FOR WHICH THE POLE WAS NOT DESIGNED FOR VOIDS THE COOPER LIGHTING WARRANTY AND MAY RESULT IN POLE FAILURE CAUSING SERIOUS INJURY OR PROPERTY DAMAGE. COOPER LIGHTING'S POLE WARRANTY IS ALSO VOIDED IF LUMINAIRE IS NOT INSTALLED AT TIME OF POLE INSTALLATION.

ORDERING INFORMATION

SAMPLE NUMBER: HTS6B30SPM2XG

Square	Straight	Steel	Shaft ³ Size	Wall Thickness	Mounting Height (ft.)	Base Type	Finish	Fixture Mounting & Type	No. & Location of Arms	Arm Lengths	Accessories (Ground Lug)
H	T	S	6	B	30	S	P	M	2	X	G

Mtg. Height	Catalog ^{1,2} Number	Wall Thickness	Base Square (In.)	Bolt Circle Dia. (In.)	Bolt Proj. (In.)	Shaft Size (In.)	Anchor Bolt Dia. & Length (In.)	Net. Wt. (Lbs.)	EPA (Sq. Ft.) ⁴ At Pole Top	EPA (Sq. Ft.) ⁴ 2' Above Pole Top	Load—Include Pole Top Bracket (Lbs.)	Max. Fixture Lug
MH			S	BC	BP	B	D x AB x H		80 90 100	80 90 100		
20	HTS6A20SF	.120					Consult your Cooper Lighting Representative					
25	HTS6A25SF	.120					Consult your Cooper Lighting Representative					
30	HTS7A30SF	.120					Consult your Cooper Lighting Representative					
30	HTS7D30SF	.188					Consult your Cooper Lighting Representative					
35	HTS8A35SF	.188					Consult your Cooper Lighting Representative					
35	HTS8D35SF	.188					Consult your Cooper Lighting Representative					
39	HTS8A39SF	.188					Consult your Cooper Lighting Representative					
39	HTS8D39SF	.188					Consult your Cooper Lighting Representative					

NOTES: 1 Catalog number includes pole with anchor bolts with double nuts (BEFORE INSTALLING ANCHOR BOLTS MAKE SURE PROPER ANCHOR BOLT TEMPLATE IS OBTAINED FROM COOPER LIGHTING HEADQUARTERS).

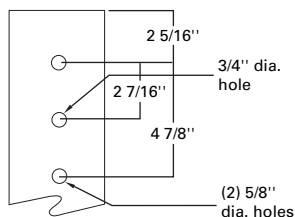
2 Tenon size or machining for rectangular arms must be specified. Hand hole is located 180° from single arm.

3 Shaft size, base plate, anchor bolts and projections may vary slightly—all dimensions nominal.

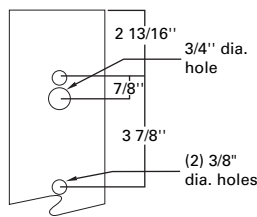
4 EPAs based on shaft properties with wind normal to flat. EPAs calculated using base wind velocity as indicated plus 30% gust factor.

DRILLING PATTERN

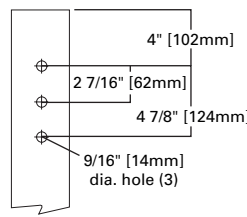
Type "M" [RCL, Landau, Galleria and Vision]



Type "E" [Concourse III]



Type "Z" [Credenza and Cirrus]

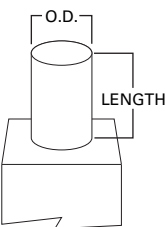


MACHINING FOR RECTANGULAR ARMS [Add as suffix]

Designation Letter & Number	Designation Letter & Number	Designation Letter & Number	Quantity & Location
M1	E1	Z1	Single
M2	E2	Z2	2 @ 180°
M3	E3	Z3	3 @ 120°
M4	E4	Z4	4 @ 90°
M5	E5	Z5	2 @ 90°
M6	E6	Z6	3 @ 90°
M7	E7	Z7	2 @ 120°

NOTES: Refer to Fixture Drilling Options on page 160.

MOUNTING OPTIONS [Add as suffix]

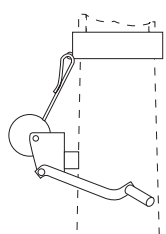
Fixed Tenon	Designation Number	O.D. (In.)	Length (In.)
	1	2 3/8	3 1/2
	2	2 3/8	4
	3	3 1/2	5
	9	3	4

ACCESSORIES

A=1/2" tapped hub¹
 B=3/4" tapped hub¹
 C=Convenience outlet²
 G=Grounding lug (max. wire #8 AWG)
 H=Additional hand hole and cover—
 12" below pole top—90° from hand hole.

NOTES: 1 Location is 3' above base—90° from hand hole.
 2 Outlet is located 4' above base and on same side of pole as hand hole, unless specified otherwise. Receptacle not included, provision only.

LOWERING EQUIPMENT



Catalog Number	Description	Net. Wt. (Lbs.)
HSSLDW	Lowering Device w/35' Cable and Snap-hook	11.5

NOTES: Lowering Device No. HSS-LDW is required for use with all Cooper Lighting hinged poles. This Device consist of a wench, arm, and a rotating steel drum with a two-way ratchet lock and 35' of stranded flexible aircraft cable. The drum has a gear ratio of 51 to 1. Combination arm, gear and lever provide a mechanical advantage of 30 to 1 and permit a direct load lift of up to 1300 lbs.

NOTE: Specifications and dimensions subject to change without notice.