

FAIL-SAFE®



HMS24 HMS24CR

250W - 400W

High Pressure Sodium
Metal Halide

165W

QL Induction

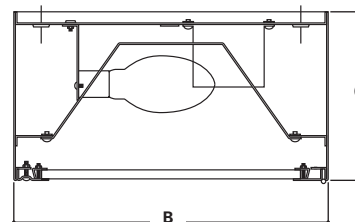
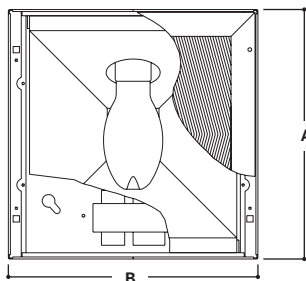
**MEDIUM SECURITY
SURFACE LUMINAIRE**

- Lens choice of prismatic tempered glass on fixture side, clear polycarbonate or clear tempered glass on environmental side
- Stainless steel tamper-resistant TORX® screws with center pin reject are standard. Allen-head screws with center pin reject are optional
- Die-formed 14 ga., 16 ga. or 20 ga. prime CRS with continuous welded and ground seams. Standard white high reflectance polyester powder coat finish
- QL induction lamp is supplied with the fixture
- Lens secured by thru-studs and vertically adjustable internal CRS hold-downs
- Internal security hinge
- Door frame consists of die-formed 14 ga., 16 ga. or 20 ga. prime CRS with overlap corners (gauge to match housing)
- Standard Class P, CBM/ETL ballast for HMS24 and Copper wound HPF is standard for HMSCR
- Non-toxic light mask
- U.L. listed, C.S.A. certified, standard wet label

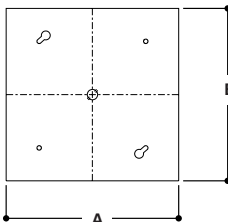
DESCRIPTION

The Fail-Safe HMS Series combines maximum security construction features with energy saving technology. This surface mounted H.I.D. luminaire utilizes a one piece heavy gauge housing, security lensing and tamper resistant fasteners to maximize impact resistance and prevent unauthorized fixture penetration. For ceiling mount. U.L. listed and C.S.A. certified for wet locations.

DIMENSIONS



MOUNTING



	A	B	C
HMS24	24" (610mm)	24" (610mm)	13" (330mm)

ORDERING INFORMATION

SAMPLE NUMBER: HMS-D24-400S-277-93-QRS-SF3

Product Family Surface Luminaire

HMS-X24=14 ga.
(Maximum Security)
HMS-D24=16 ga.
(Medium Security)
HMS24CR=20 ga. SS
Corrosion Resistant ²

Lamp Type High Pressure Sodium

250S=250W HPS
400S=400W HPS

Metal Halide

250M=250W MH
400M=400W MH

QL Induction

165Q=165W QL¹

Voltage

120=120V
208=208V
240=240V
277=277V
DT=Dual-Tap 120/277V
MT=Multi-tap
120/208/240/277V

Lens Type Fixture Side

26=Injected
Molded
Polycarbonate
Lens
93=.156 Prismatic
Tempered Glass

Environmental Side ³

85=.187 Clear
Polycarbonate
86=.250 Clear
Polycarbonate
87=.375 Clear
Polycarbonate
94=.187 Clear
Tempered Glass
96=.250 Clear
Tempered Glass
97=.375 Clear
Tempered Glass

Options

ALP=Aluminum Door
(polyester powder coat
finish) ⁴

DF=Double Fuse
SF=Single Fuse

Socket Options

QS=Quartz Socket (DC
bayonet base)
QRS=Quartz Restrike System
(DC bayonet base
socket;
lamp by others.)

Stainless Steel Housing

SHN=Natural Brushed Finish ⁴
SHP=Polyester Powder Coat
Finish ⁴

Stainless Steel Door

SSN=Natural Brushed Finish ⁴
SSP=Polyester Powder Coat
Finish ⁴

Fasteners

SF1=TORX®-Head
(center pin reject)
SF3=Allen-Head
(center pin reject)

Accessories (Order Separately)

9306=Allen-Head Wrench ⁴
VRSD=TORX®-Head Vandal
Resistant Screwdriver

Notes: For additional options, consult your Cooper Lighting Representative. Specifications and Dimensions subject to change without notice.
¹ Available with 240V if needed. ² Door and Housing to be Natural Brushed finish. ³ Do not specify with 26 lens. ⁴ HMS24 fixtures only. ⁵ HMSCR fixtures only.