

DESCRIPTION

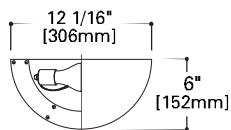
The classic Metro Quarter Sphere sconce can be mounted to direct light either up or down. The halogen lamp unit provides high light output (for uplighting only). A rear facing strip of translucent polycarbonate creates a "floating" pool of light behind the fixture. Available in White, Polished Brass or Polished Chrome finishes. UL Listed for damp location. Compact fluorescent 120V AC input only.

Finishes: P, PB, PC

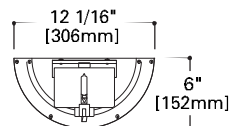
Catalog #	Type
Project	
Comments	
Prepared by	Date

DIMENSIONS / CANDLEPOWER DISTRIBUTION

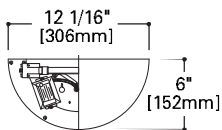
H2570



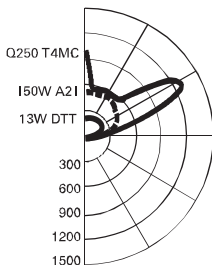
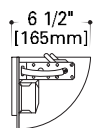
H2571



H2572



SIDE VIEW



**METRO
QUARTER
SPHERE
H2570
H2571
H2572**

**INCANDESCENT/
COMPACT
FLUORESCENT**

ORDERING INFORMATION

SAMPLE NUMBER: H2570 PB

Sconces

Finish

H2570=Incandescent
60W A19, 75W A19, 100W A19, 150W A21
H2571=Tungsten Halogen Q150M, Q250 T-4 Quartz
Mini-candelabra base
H2572=Compact Fluorescent 13W TT (Halo Z64)

P= White
PB=Polished Brass
PC=Polished Chrome

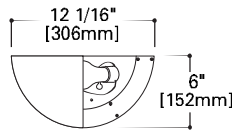
DESCRIPTION

This softly glowing sconce provides abundant uplighting and gentle surface illumination. The H2594 unit features a translucent polycarbonate quarter sphere (the H2595 translucent quarter sphere has a veined pearl onyx finish). UL Listed for damp location. Compact fluorescent 120V AC input only.

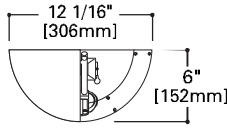
Finishes: TPO, (Blank)

DIMENSIONS / CANDLEPOWER DISTRIBUTION

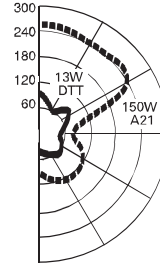
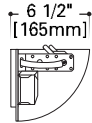
H2594



H2595



SIDE VIEW



**TRANSLUCENT
QUARTER
SPHERE
H2594
H2595**

**INCANDESCENT/
COMPACT
FLUORESCENT**

ORDERING INFORMATION

SAMPLE NUMBER: H2592 GS

Sconces

Finish

H2594=Incandescent
60W A19, 75W A19, 100W A19, 150W A21
H2593=Compact Fluorescent
13W DTT (Halo Z64)

Blank= Translucent
TPO= Veined Pearl Onyx

Note: Specifications and Dimensions subject to change without notice.

Visit our web site at www.cooperlighting.com