

FAIL-SAFE®



FWW FWE

1 3 W - 8 0 W

Fluorescent

POLYCARBONATE HIGH ABUSE WALL OR CEILING LUMINAIRE

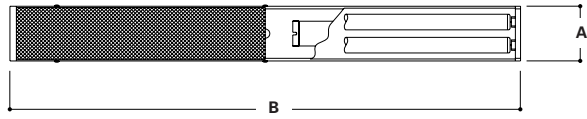
CLEAR PRISMATIC OR WHITE

- Min. 0.130" thick, one piece injection molded UV stabilized polycarbonate lens
- Captive, stainless steel tamper-resistant TORX®-head screws prevent unauthorized access
- Die-formed 16 ga. CRS with welded and ground ends and internal weld bands for added strength. Standard white high reflectance polyester powder coat finish
- Lamps by others
- Double wall lens channel captivates lens to prevent unauthorized fixture penetration
- Copper wound HPF, rapid start, Class P, CBM/ETL ballast is standard
- U.L. listed, C.S.A. certified, standard damp label

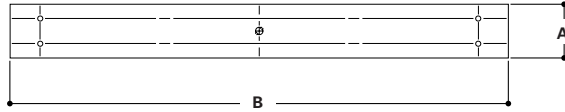
DESCRIPTION

Fail-Safe's FWW and FWE Series combine vandalproof features with commercial aesthetics to offer owners an unbreakable solution to the problem of broken fixtures in unsupervised areas like employee locker rooms or service station washrooms. The FWW Series is designed for wall mount applications. The FWE Series is designed for ceiling mount applications. An emergency battery pack is available as an option. U.L. listed, C.S.A. certified, standard damp label.

DIMENSIONS

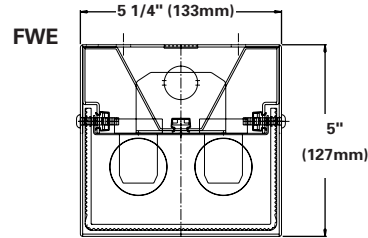
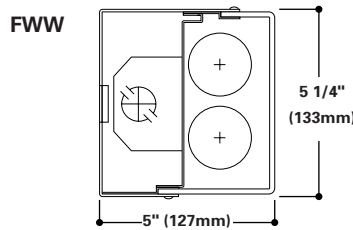


MOUNTING



	A	B
FWW	5 1/4"	25"
2' (nominal)	(133mm)	(635mm)
FWE	5 1/4"	25"
2' (nominal)	(133mm)	(635mm)
FWW	5 1/4"	49"
4' (nominal)	(133mm)	(1245mm)
FWE	5 1/4"	49"
4' (nominal)	(133mm)	(1245mm)

END VIEWS



ORDERING INFORMATION

SAMPLE NUMBER: FWW-240-120-LE3-GLR

Product Family
FWW=High Abuse Wall Luminaire
FWE=High Abuse Ceiling Mount Luminaire

Voltage³
120=120V
277=277V
347=347V

Ballast³
LE3=Energy Saving Ballast

Electronic Ballast¹
EB81=(1) Ballast for use with T8 Lamp
EB82=(2) Ballasts for use with T8 Lamp
EB21=(1) Ballast for use with T12 Lamp²
EB22=(2) Ballasts for use with T12 Lamp²
EBX1=(1) Ballast for use with Biaxial Lamp
EBX2=(2) Ballasts for use with Biaxial Lamp

Options
EBP=Emergency Battery Pack
FNL=Fluorescent Night Light (Lamp by others)
GCO=Grounded Convenience Outlet
GLR=Fuse and Holder
OPL=Opal Diffuser
RIF=Radio Interference Filter
SPS=Security Push Button On/Off Switch
WL=Wet Location (covered ceiling only)

Accessories
(Order Separately)
VRSD=Torxhead Vandal Resistant Screwdriver

Lamp Type

2'	4'
T5 Fluorescent	T5 Fluorescent
128=(1) 28W Lamp	128=(1) 28W Lamp
228=(2) 28W Lamps	228=(2) 28W Lamps
328=(3) 28W Lamps ³	328=(3) 28W Lamps ³
154=(1) 54W T5HO Lamp	154=(1) 54W T5HO Lamp
254=(2) 54W T5HO Lamps	254=(2) 54W T5HO Lamps
T8 Fluorescent	T8 Fluorescent
117=(1) 17W Lamp	132=(1) 32W Lamp
217=(2) 17W Lamps	232=(2) 32W Lamps
T12 Fluorescent	T12 Fluorescent
120=(1) 20W Lamp ²	140=(1) 40W Lamp
220=(2) 20W Lamps ²	240=(2) 40W Lamps
Biaxial Fluorescent	
140BX=(1) 40W Biax Lamp	
240BX=(2) 40W Biax Lamp	

Notes: For additional options, consult your Cooper Lighting Representative. Specifications and Dimensions subject to change without notice.

¹ For specific electronic ballast, specify brand and catalog number. ² Electronic ballast not available with F20T12 lamps. ³ Products also available in non-US voltages and 50Hz for international markets. Consult your Cooper Lighting Representative for availability and ordering information.