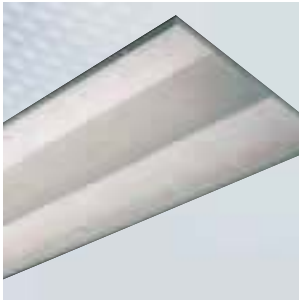


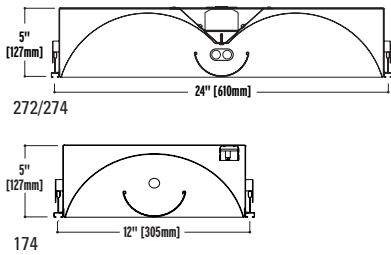
NEO-RAY™



FENESTRA 274 272 174

DIRECT-INDIRECT

- Broad ambient light distribution with high efficiencies enable reduction of fixture quantities and overall load
- Narrow 4" wide center diffuser increases efficiency and reduces the visual mass of the fixture.
- Optimized for T5 lamping low glare direct-indirect illumination is ideal for offices
- Housings designed for meticulous fit with all ceiling types
- Tannenbaum reflector option lends high tech appearance through exquisite application of refined material.
- Air return option refines the interior by reduction of ceiling clutter



Construction

20-gauge steel housing. (1'x4', 2'x2' or 2'x4')

Shielding

Precision formed perforated metal panels backed by a white acrylic diffuser.

Electrical

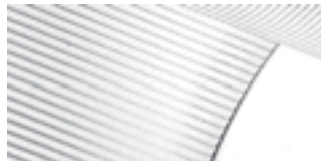
120, 277, 347 or Universal Voltage electronic ballast. Fixtures and electrical components certified to UL and CUL standards.

Finish

Durable, low gloss, white, powder coated acrylic finish.

Mounting

Specify: **ETG** for exposed T-grid, **STG** for Bolt Slot Grid or **SR** for Sheetrock.



Tannenbaum Reflector

ORDERING INFORMATION:

Sample number: 274R-1BX40W-ETG-1EB-SI-EM

Series

174=1'x4' **272**=2'x2' **274**=2'x4'

Options ²

A=Air Return **T**=Tannenbaum Reflector
C=Chicago Plenum

Mounting

R=Recessed

Number of Lamps (in cross section) (not included)

1=1 Lamp **2**=2 Lamps

Lamp Type

T8	T5	T5HO	BX40W (2x2 and 2x4 only)	BX50W (2x2 and 2x4 only)
-----------	-----------	-------------	---------------------------------------	---------------------------------------

Ceiling Type

ETG=Exposed T-Grid **STG**=Slot T-Grid **SR**=Sheet Rock

Voltage ¹

1=120V **2**=277V **3**=347V **U**=Universal

Ballast

EB=Electronic Ballast (Standard) **DB**=Dimming Ballast

Switching

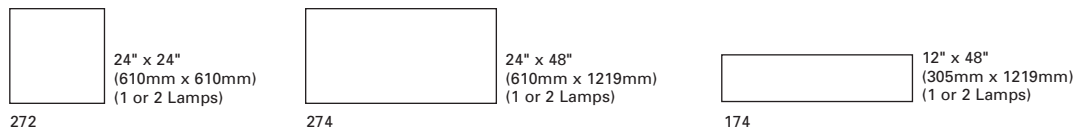
SI=Single Switching **DU**=Dual Switching

Emergency

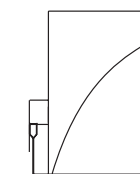
EM=Emergency Pack (Consult Factory)

¹ Due to various constraints, some options may not be combined with others.
² Can be left blank or more than one option may be available, consult factory.

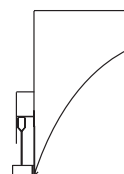
STANDARD LUMINAIRE PLAN - VIEW - VIEW



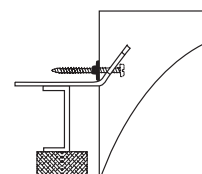
MOUNTING INFORMATION



ETG
EXPOSED TEE GRID



STG
SLOT TEE GRID



SR
SHEET ROCK

NOTES: For complete product data, refer to the Neo-Ray Specification Binder. Specifications and dimensions subject to change without notice. Products may be modified for use in international markets. Please contact your Cooper Lighting Sales Representative for availability and ordering information.