

## DESCRIPTION

The Fail-Safe HMS24CR series combines maximum corrosion resistance and energy-saving technology for your toughest industrial environment. The surface-mounted luminaire utilizes a stainless-steel continuously welded one-piece housing, minimizing the number of components exposed to the harsh environment. The HMS24CR is ready for the toughest environments. Ceiling mount, U.L.-listed and C.S.A.-certified for wet location.

Catalog #		Type
Project		
Comments		Date
Prepared by		

## SPECIFICATION FEATURES

### Applications

The HMS24CR series is an excellent choice for all corrosion-prone industrial environments. Consideration should be given to any atmosphere consisting of acids, alkalis, salts, gases or water. Critical locations are where condensation, vaporization, heating and cooling may occur. Applications include high ceilings where H.I.D. lamp sources are the most cost-effective manner to illuminate the area.

### A ... Lens

Choice of prismatic polycarbonate or prismatic tempered glass. Consult ordering information.

### B ... Fasteners

Four stainless-steel fasteners. Phillips head is standard. Also available with tamper-resistant screws.

### C ... Housing

Die-formed 20-ga. stainless-steel body with continuously welded and ground ends to form a one-piece seamless housing for maximum resistance to the environment. Standard 304 stainless-steel, cold-rolled and annealed, with a natural brushed finish.

### D ... Lamps

(By Others)

### E ... Hinge

Stainless-steel internal hinge allows for easy maintenance and reduces the number of parts exposed to the environment.

### F ... Door Frame

Die-formed 20-ga. stainless-steel, cold-rolled and annealed with overlapping corners.

### G ... Ballast

Copper wound, HPF ballast is standard.

### Labels

U.L.-listed, C.S.A.-certified, standard wet label.

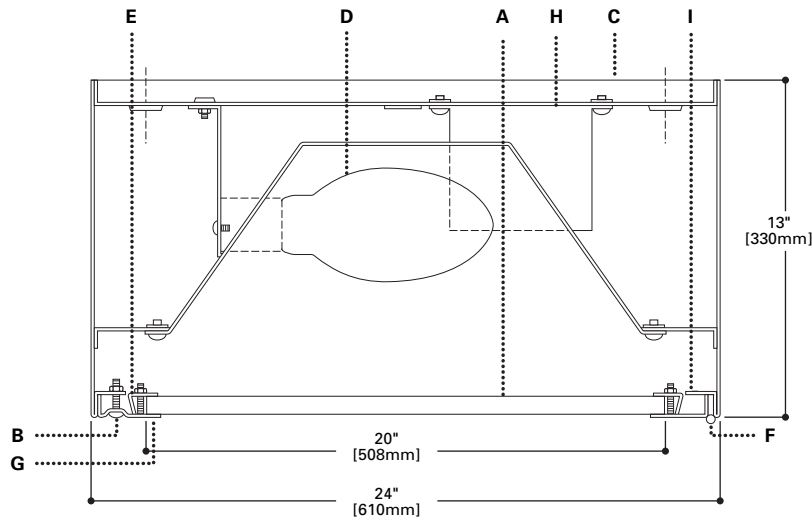


## HMS24CR

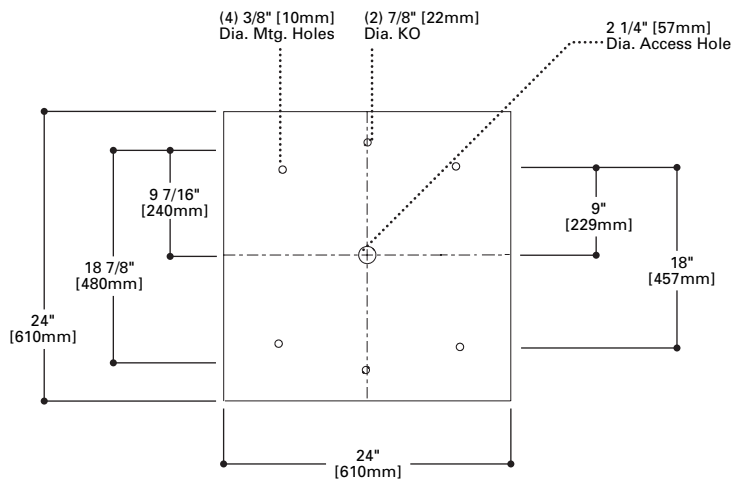
**250W - 400W**  
High Pressure Sodium  
Metal Halide

**165W**  
QL Induction

**STAINLESS-STEEL**  
SURFACE LUMINAIRE



## MOUNTING DIMENSIONS



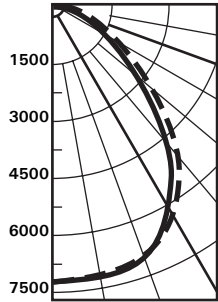
## ENERGY DATA

Input Watts:  
 (1) 250W High Pressure Sodium: 300W  
 (1) 250W Metal Halide: 295W  
 (1) 400W High Pressure Sodium: 465W  
 (1) 400W Metal Halide: 455W

TORX® is a registered trademark of Camcar Division of Textron Inc.

PHOTOMETRICS

Candlepower Distribution



Test No. 4646  
**HMS24CR-250M**  
 Lamp=MS250/C/HOR  
 Lumens=23000  
 Efficiency=69.8%



Candlepower

Deg.	⊥	
0	7326	7326
5	7297	7311
15	7194	7145
25	6837	6703
35	5828	5489
45	3936	3479
55	2009	1702
65	1062	827
75	522	418
85	152	152
90	0	0

Zonal Lumen Summary

Zone	Lumens	%Lamp	%Luminaire
0-30	5867	25.5	36.5
0-40	9513	41.4	59.2
0-60	14362	62.4	89.4
0-90	16060	69.8	100.0
90-180	0	0.0	0.0
0-180	16060	69.8	100.0

Coefficient of Utilization

rc	80%				70%			50%		30%		10%		0%
	70	50	30	10	50	30	10	50	10	50	10	50	10	0
RCR														
0	83	83	83	83	81	81	81	78	78	74	74	71	71	70
1	78	75	73	70	73	71	69	71	67	68	65	65	63	62
2	72	68	64	60	66	63	60	64	58	62	57	60	56	55
3	67	61	56	53	60	56	52	58	51	56	51	55	50	48
4	62	55	50	46	54	50	46	53	45	51	45	50	44	43
5	58	50	44	40	49	44	40	48	40	46	39	45	39	38
6	53	45	40	36	45	39	36	43	35	42	35	41	35	34
7	49	41	36	32	40	35	32	39	31	38	31	38	31	30
8	46	37	32	28	37	31	28	36	28	35	27	34	27	26
9	42	33	28	24	33	28	24	32	24	31	24	31	24	23
10	39	30	25	22	30	25	22	29	22	29	21	28	21	20

rc = Ceiling reflectance, rw = Wall reflectance, RCR = Room cavity ratio  
 CU Data Based on 20% Effective Floor Cavity Reflectance.

ORDERING INFORMATION

SAMPLE NUMBER: HMS24CR-400S-277-93/85-QRS

Product Family	Lamp Type	Voltage	Lens Type	Options	Accessories (order separately)	
<b>HMS24CR</b>						
Surface Luminaire HMS24CR	250S=250W HPS 400S=400W HPS 250M=250W MH 400M=400W MH 165Q=165W QL	120=120V 208=208V 240=240V 277=277V	<b>Fixture Side</b> 26=Injected/Molded Polycarbonate Drop Lens 93=.156 Prismatic Tempered Glass	<b>Environmental Side</b> <sup>1</sup> 85=.187 Clear Polycarbonate 86=.250 Clear Polycarbonate 87=.375 Clear Polycarbonate 94=.187 Clear Tempered Glass 96=.250 Clear Tempered Glass 97=.375 Clear Tempered Glass	DF=Double Fuse (208V, 240V) SF=Single Fuse (120V, 277V) <b>Socket Options</b> QS=Quartz Socket (DC bayonet base) QRS=Quartz Restrike System (DC bayonet base socket; lamp by others.) SF1=TORX®-Head (center pin reject)	VRSD=TORX®-Head Vandal Resistant Screwdriver (Only required if using SF1 Option)

Notes:  
 For additional options, consult Cooper Lighting Representative.  
 Specifications and Dimensions subject to change without notice.  
<sup>1</sup> Do not specify with 26 lens.