

# FAIL-SAFE®



## FCT

**2 8 W - 1 2 0 W**  
Fluorescent

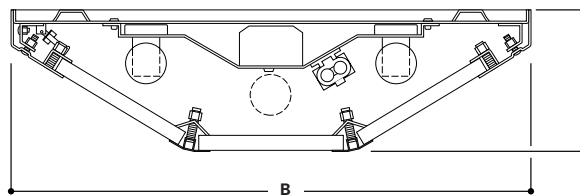
### ULTIMAX SURFACE LUMINAIRE

- Lens choice of prismatic acrylic, prismatic polycarbonate or prismatic tempered glass on fixture side, clear polycarbonate or clear tempered glass on environmental side
- Stainless steel tamper-resistant TORX® screws with center pin reject are standard. Allen-head screws with center pin reject are optional
- Clamshell design combines die-formed 12, 14 or 16 ga. CRS body with continuous welded and ground 12 ga. ends. Standard white high reflectance polyester powder coat finish
- Lamps by others
- Lens secured by thru-studs and vertically adjustable internal CRS hold-downs
- Internal security hinge
- Die-formed CRS backplate (gauge to match housing)
- Standard Class P, CBM/ETL ballast
- U.L. listed, C.S.A. certified standard damp label

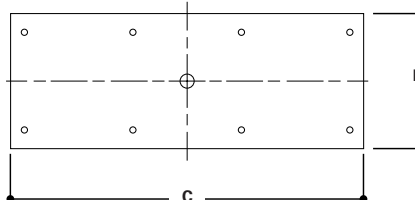
### DESCRIPTION

The Fail-Safe FCT Series combines maximum security construction features with energy saving technology. This low profile surface mounted luminaire has a clamshell housing, security lensing and tamper resistant fasteners to maximize impact resistance and prevent contraband concealment and unauthorized fixture penetration. Can be ceiling or wall mounted. An emergency battery pack is available as an option. U.L. listed and C.S.A. certified for damp locations.

### DIMENSIONS



### MOUNTING



	A	B	C
<b>2' Nom. Length</b>	4 7/8" (124mm)	19 7/16" (494mm)	26 1/4" (667mm)
<b>4' Nom. Length</b>	4 7/8" (124mm)	19 7/16" (494mm)	50 1/4" (1276mm)

### ORDERING INFORMATION

SAMPLE NUMBER: FCT-S-340-277-80/86-LE3-TCS

<p><b>Product Family</b> Surface Luminaires</p> <p>FCT-S=12 ga. (Ultimax) FCT-X=14 ga. (Maximum) FCT-D=16 ga. (Medium)</p>	<p><b>Lamp Type</b> <b>2' Nom. Length</b></p> <p><b>T5 Fluorescents</b> 214=(2) 14W Lamps 314=(3) 14W Lamps</p> <p><b>T8 Fluorescents</b> 217=(2) 17W Lamps 317=(3) 17W Lamps</p> <p><b>T12 Fluorescents<sup>2</sup></b> 220=(2) 20W Lamps 320=(3) 20W Lamps</p> <p><b>Biaxial Fluorescents</b> 240BX=(2) 40W Lamps 340BX=(3) 40W Lamps</p> <p><b>4' Nom. Length</b></p> <p><b>T5 Fluorescents</b> 228=(2) 28W Lamps 328=(3) 28W Lamps</p> <p><b>T8 Fluorescents</b> 232=(2) 32W Lamps 332=(3) 32W Lamps</p> <p><b>T12 Fluorescents</b> 240=(2) 40W Lamps 340=(3) 40W Lamps</p> <p><b>Voltage</b> 120=120V 277=277V UNV=120V through 277V</p>	<p><b>Lens Type</b> <b>Inner Layer (optional)</b></p> <p>90=.005 UV Absorbing Overlay</p> <p><b>Fixture Side</b></p> <p>80=.125 Prismatic Acrylic</p> <p>81=.156 Prismatic Polycarbonate</p> <p>82=.187 Prismatic Polycarbonate</p> <p>93=.156 Prismatic Tempered Glass</p> <p><b>Environmental Side</b></p> <p>84=.125 Clear Polycarbonate</p> <p>85=.187 Clear Polycarbonate</p> <p>86=.250 Clear Polycarbonate</p> <p>87=.375 Clear Polycarbonate</p> <p>88=.500 Clear Polycarbonate</p> <p>94=.187 Clear Tempered Glass</p> <p>96=.250 Clear Tempered Glass</p> <p>97=.375 Clear Tempered Glass</p> <p>98=.500 Clear Tempered Glass</p> <p><b>Ballast</b> Blank=Magnetic Ballast (Standard) <sup>3</sup> LEOC8=T8 Energy Saving Ballast LE3=40W T12 Energy Saving Ballast</p> <p><b>Electronic Ballast<sup>1</sup></b> EB81=(1) Ballast for use with T8 Lamp EB82=(2) Ballasts for use with T8 Lamp EB51=(1) Ballast for use with T5 Lamp EB52=(2) Ballasts for use with T5 Lamp EB21=(1) Ballast for use with T12 Lamp<sup>2</sup> EB22=(2) Ballasts for use with T12 Lamp<sup>2</sup> EBX1=(1) Ballast for use with Biaxial Lamp EBX2=(2) Ballasts for use with Biaxial Lamp</p>	<p><b>Options</b></p> <p>CPH=Continuous Concealed Piano Hinge</p> <p>EBP=Emergency Battery Pack (4' fixtures only)</p> <p>FNL=Fluorescent Night Light (Lamp by others.)</p> <p>GLR=Fuse and Holder</p> <p>RIF=Radio Interference Filter</p> <p>SPK=Speaker Housing Compartment (extends housing)</p> <p><b>Auto Control Modules</b> ACM/FNL=for FNL</p> <p><b>On/Off Switches</b></p> <p>SPS=Security Push Button</p> <p>TCS=Touch Control System <sup>4</sup></p> <p><b>Stainless Steel Housing</b> SSN=Natural Brushed Finish</p> <p>SSP=Polyester Powder Coat Finish</p> <p><b>Fasteners</b> SF3=Allen-Head (center pin reject)</p> <p><b>Accessories (Order Separately)</b> 9306=Allen-Head Wrench VRSD=TORX®-Head Vandal Resistant Screwdriver</p>
--	---	--	---

**Notes:** For additional options, consult your Cooper Lighting Representative. Specifications and Dimensions subject to change without notice. Electronic ballast may cause interference with other electronic devices. If interference occurs, move the device away from the product or plug/connect into a different circuit/outlet.

<sup>1</sup> For specific electronic ballast, specify brand and catalog number. <sup>2</sup> Electronic ballast not available for F20T12 lamps. <sup>3</sup> For use with Compact Fluorescent, Biaxial, and 20W T12 lamps. <sup>4</sup> For additional information about the TCS option see pages 1106 and 1107.