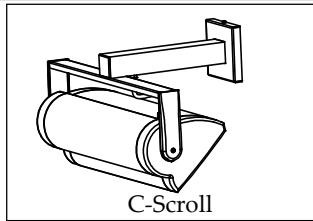
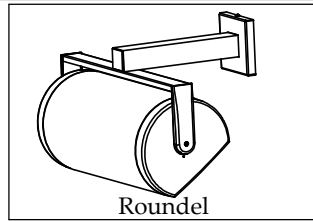


Vault



C-Scroll



Roundel

These installation instructions are valid with the above Ametrix styles.

Large, INDOOR CR (Cantilever, Remote ballast) Visor and Non-Visor

Warning: Before starting any work ensure that all sources of power are turned off. All work must meet local/national codes and be performed by a certified electrician. Do not mount fixtures vertically.

Exploded view and part call-out

Labels in diagram:
 #8-32 x3/8" Set screw (2x)
 Canopy
 1/4-20 x3/4" Hex bolts (2x)
 Yoke assembly
 Yoke end cap
 Fixture head
 #10-32 x1 End screw (2x)

Attention:
 All large fixtures require additional bracing/structure around J-box to support fixture.

1 Mounting cantilever to structure

Labels in diagram:
 #8-32 x3/8" Set screw
 Canopy
 J-box (by others)
 Mounting plate
 1/4" fastener (by others) (4x)

- Prior to attaching fixture head to cantilever, remove both #8-32 x3/8" set screws and allow canopy to slide down pendant.
- Feed power wire through wiring holes and using appropriate fasteners, secure mounting plate to structure. **Use additional bracing around J-box to support J-box.**

2 Securing fixture to cantilever

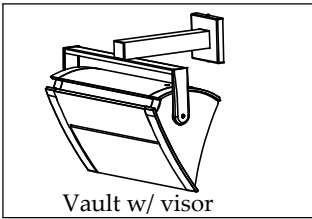
Labels in diagram:
 1/4-20 x3/4" Hex bolts (2x)
 #6-32 x1/4 Flat head screw
 Yoke arm end cap
 #10-32 x1 End screw
 Fixture head

- To remove fixture head from cantilever, remove #10-32 x1 end screw from **one** side.
- Remove the #6-32 x 1/4" Flat head screw from the inside of the yoke arm and remove the yoke end cap.
- With fixture head removed, secure yoke to cantilever using 1/4-20 x 3/4" hex bolts.
- Run wiring from fixture head, into pendant and out holes in mounting plate.

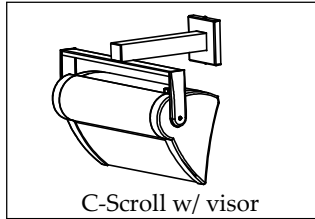
3 Wiring the fixture

Labels in diagram:
 #8-32 x 3/8" Set screws (2x)
 Canopy
 Wiring holes

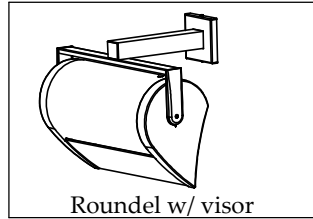
- After pulling wires through wiring holes in mounting plate, attach appropriate wires and ensure all connections are properly matched.
- Push connections into J-box and secure canopy using both #8-32 x3/8" set screws.
- Refer to supplementary sheet for instructions on aiming and sealing the fixture.



Vault w/ visor



C-Scroll w/ visor



Roundel w/ visor

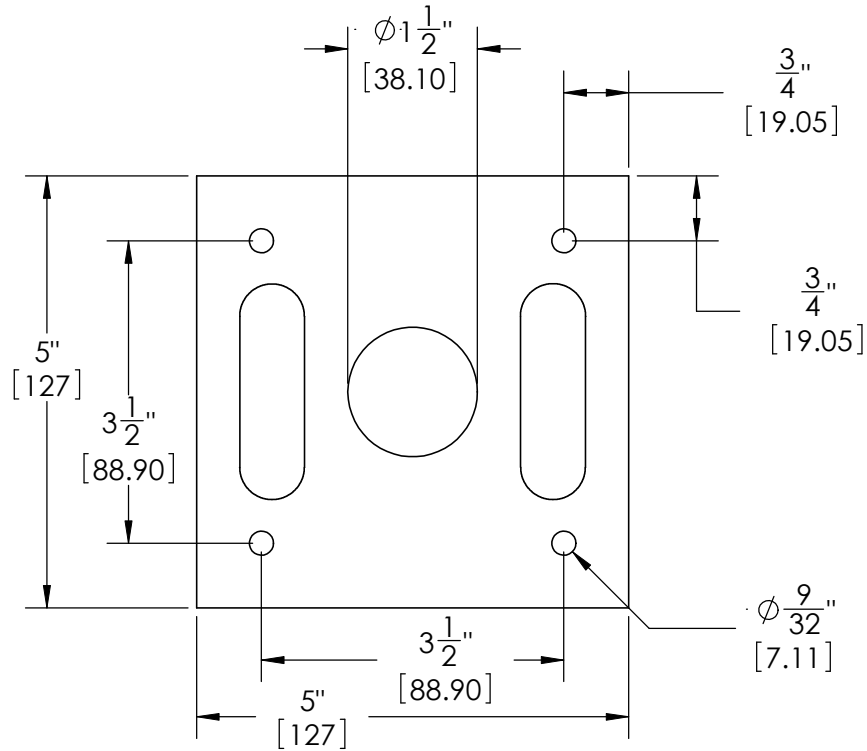
These installation instructions are valid with the above Ametrix styles

Large, INDOOR CR (Cantilever, Remote ballast) Visor and Non-Visor

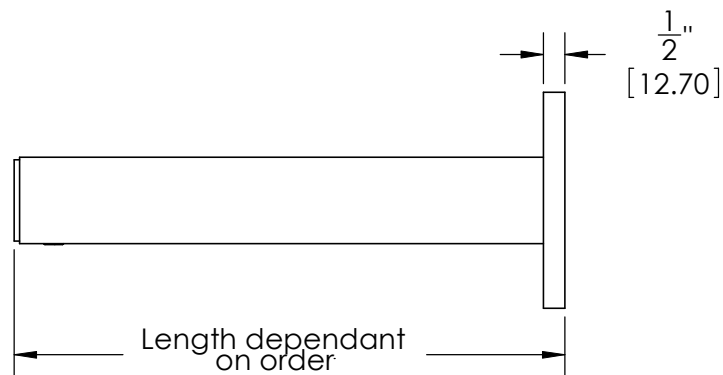
Warning: Before starting any work ensure that all sources of power are turned off. All work must meet local/national codes and be performed by a certified electrician. **Do not** mount fixtures vertically.

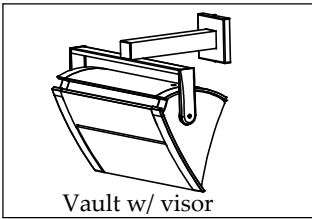
Mounting plate dimensions In[mm]

Top View

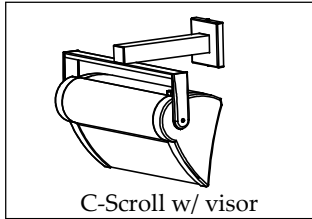


Side View

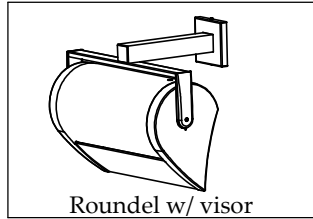




Vault w/ visor



C-Scroll w/ visor



Roundel w/ visor

These installation instructions are valid with the above Ametrix styles

**Large, INDOOR
CR**
(Cantilever, Remote ballast)
Visor and Non-Visor

Warning: Before starting any work ensure that all sources of power are turned off. All work must meet local/national codes and be performed by a certified electrician. **Do not** mount fixtures vertically.

Lamping Size Chart
(lamps provided by others)

FIXTURE SIZE (inches/ mm)	WATTAGE	# OF LAMPS	LAMP TYPE	LAMP DESCRIPTION	Lamp (not to scale)
16 1/2 / 419.1	32 W	1	T4	Compact Fluorescent	
16 1/2 / 419.1	42 W	1	T4	Compact Fluorescent	
16 1/2 / 419.1	57 W	1	T4	Compact Fluorescent	
16 1/2 / 419.1	100 W	1	ED17	Ceramic Metal Halide	
16 1/2 / 419.1	150 W	1	T6	Ceramic Metal Halide	
16 1/2 / 419.1	175 W	1	ED17	Ceramic Metal Halide	
22 1/2 / 571.5 mm	250 W	1	ET18	Metal Halide	
22 1/2 / 571.5 mm	400 W	1	ET18	Metal Halide	
22 1/2 / 571.5 mm	150 W	2	T6	Ceramic Metal Halide	
22 1/2 / 571.5 mm	32 W	2	T4	Compact Fluorescent	
22 1/2 / 571.5 mm	42 W	2	T4	Compact Fluorescent	
22 1/2 / 571.5 mm	250 W	1	ET18	Metal Halide	
22 1/2 / 571.5 mm	400 W	1	ET18	Metal Halide	
22 1/2 / 571.5 mm	150 W	2	T6	Ceramic Metal Halide	
22 1/2 / 571.5 mm	350 W	1	T3	Halogen(Double Ended)	
22 1/2 / 571.5 mm	500 W	1	T3	Halogen(Double Ended)	
30 1/2 / 774.7	36 W	1	T5	Twin Tube	
30 1/2 / 774.7	40 W	1	T5	Twin Tube	
30 1/2 / 774.7	50 W	1	T5	Twin Tube	
30 1/2 / 774.7	55 W	1	T5	Twin Tube	
30 1/2 / 774.7	36 W	2	T5	Twin Tube	
30 1/2 / 774.7	40 W	2	T5	Twin Tube	
30 1/2 / 774.7	50 W	2	T5	Twin Tube	
30 1/2 / 774.7	55 W	2	T5	Twin Tube	
30 1/2 / 774.7	250 W	2	ET18	Metal Halide	
30 1/2 / 774.7	400 W	2	ET18	Metal Halide	
30 1/2 / 774.7	900 W	1	T3	Halogen(Double Ended)	
30 1/2 / 774.7	1000 W	1	T3	Halogen(Double Ended)	