

COOPER LIGHTING - LUMARK®

DESCRIPTION

The Lumark Tribute Pole/Fixture Combo features all you need for easy selection and installation for poles and fixtures. Including the quality, die-cast Tribute area luminaire and 8" arm complete with lamp, square straight steel pole and necessary anchorage. Available in single or dual fixture combinations.

The Tribute/Pole Combo is ideal for parking areas, access roadways and other general off street area/site lighting applications.

Catalog #		Type
Project		
Comments		Date
Prepared by		

SPECIFICATION FEATURES

Construction

Rugged one-piece die-cast aluminum housing and door frame finished in dark bronze polyester powder paint. One-piece silicone gasket protects the optical chamber from performance degrading contaminants. One (1) stainless spring latch and two (2) stainless steel hinges allow toolless opening and removal of door frame. U.L. Listed and CSA certified for wet locations. IP55 Rated.

Reflector

Hydroformed anodized aluminum reflector offered in an adjustable Type II/III or a Type IV distribution. Optical modules are field rotatable in 90° increments and offered standard with mogul-base lampholders.

Electrical

Ballast and related electrical componentry are hard mounted to die-cast housing for optimal heat transfer and operating efficiency.

Mounting

Extruded 8" aluminum arm features internal bolt guides for easy positioning of fixture during installation to pole.

Finish

Housing and arm finished in a 5 stage premium TGIC bronze polyester powder coat paint.

Pole

Shaft is one piece construction ASTM A500 grade "B" steel, shot blasted and finished in dark bronze polyester powder coat. Anchor base is fabricated from ASTM grade steel. ASTM A366 steel full base cover is provided to enclose base plate and anchor bolts. Anchor bolts are per ASTM A576 with (2) nuts, (2) flat washers, and (1) lock washer. Hardware and threaded portion of bolt are hot dip galvanized. 3" hook for 3/4" bolt, 4" hook for 1" bolt.



PFT TRIBUTE AND POLE COMBO

150 - 400 W
High Pressure Sodium
Pulse Start Metal Halide
Metal Halide

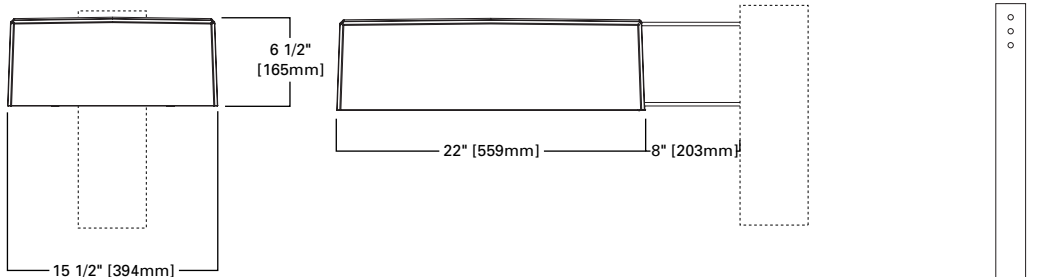
15' - 30'

Square Straight
Steel Pole

POLE AND FIXTURE
COMBO

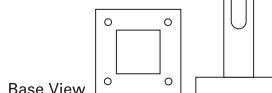
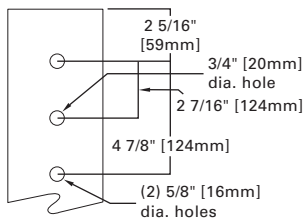
LAMP TYPE	WATTAGE
Pulse Start Metal Halide	175, 250, 400W
Metal Halide	175, 250, 400W
High Pressure Sodium	150, 250, 400W

DIMENSIONS



DRILLING PATTERNS

TYPE "M"



ENERGY DATA

Hi-Reactance Ballast Input Watts

150W HPS HPF (190 Watts)
150W MH HPF (185 Watts)

CWI Ballast Input Watts

250W HPS HPF (300 Watts)

CWA Ballast Input Watts

175W MP HPF (208 Watts)
175W MH HPF (210 Watts)
250W MP HPF (291 Watts)
250W MH HPF (295 Watts)
400W MP HPF (452 Watts)
400W MH HPF (455 Watts)
400W HPS HPF (465 Watts)

EPA

Effective Projected Area: (Sq. Ft.)

Single: 1.62

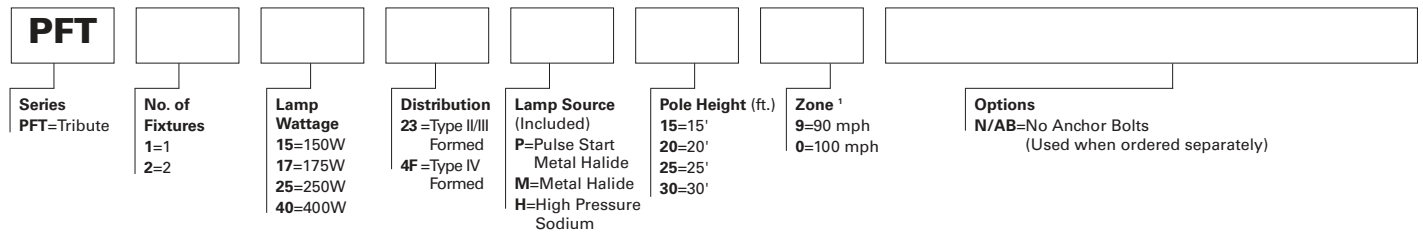
Dual: 3.24


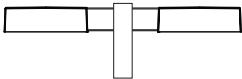
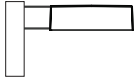
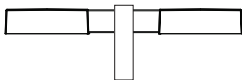
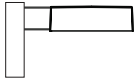
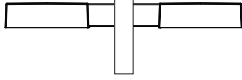
SHIPPING DATA

Approximate Net Weight:
39 lbs. (17.73 kgs.)



SAMPLE NUMBER: PFT11723M15N/AB



Lamp Source/Number of Fixtures	Pole Height	Wattage	Distribution	80 MPH	90 MPH ¹	100 MPH ¹
HIGH PRESSURE SODIUM (HPS)						
Single Fixture 	15' Pole	150W HPS	Type II/III Type IV	PFT11523H15 ² PFT1154FH15 ²	PFT11523H15 ² PFT1154FH15 ²	PFT11523H15 ² PFT1154FH15 ²
	20' Pole	250W HPS	Type II/III Type IV	PFT12523H20 ² PFT1254FH20 ²	PFT12523H20 ² PFT1254FH20 ²	PFT12523H20 ² PFT1254FH20 ²
		400W HPS	Type II/III Type IV	PFT14023H20 ² PFT1404FH20 ²	PFT14023H20 ² PFT1404FH20 ²	PFT14023H20 ² PFT1404FH20 ²
	25' Pole	400W HPS	Type II/III Type IV	PFT14023H25 ² PFT1404FH25 ²	PFT14023H25 ² PFT1404FH25 ²	PFT14023H25 ² PFT1404FH25 ²
		30' Pole	400W HPS	Type II/III Type IV	PFT14023H30 ³ PFT1404FH30 ³	PFT14023H30 ³ PFT1404FH30 ³
Dual Fixture 	15' Pole	150W HPS	Type II/III Type IV	PFT21523H15 ² PFT2154FH15 ²	PFT21523H15 ² PFT2154FH15 ²	PFT21523H15 ² PFT2154FH15 ²
	20' Pole	250W HPS	Type II/III Type IV	PFT22523H20 ² PFT2254FH20 ²	PFT22523H20 ² PFT2254FH20 ²	PFT22523H20 ² PFT2254FH20 ²
		400W HPS	Type II/III Type IV	PFT24023H20 ² PFT2404FH20 ²	PFT24023H20 ² PFT2404FH20 ²	PFT24023H20 ² PFT2404FH20 ²
	25' Pole	400W HPS	Type II/III Type IV	PFT24023H25 ² PFT2404FH25 ²	PFT24023H25 ² PFT2404FH25 ²	PFT24023H25 ² PFT2404FH25 ²
		30' Pole	400W HPS	Type II/III Type IV	PFT24023H30 ³ PFT2404FH30 ³	PFT24023H30 ⁴ PFT2404FH30 ⁴
PULSE START METAL HALIDE (PSMH)						
Single Fixture 	15' Pole	175W PSMH	Type II/III Type IV	PFT11723P15 ² PFT1174FP15 ²	PFT11723P15 ² PFT1174FP15 ²	PFT11723P15 ² PFT1174FP15 ²
	20' Pole	250W PSMH	Type II/III Type IV	PFT12523P20 ² PFT1254FP20 ²	PFT12523P20 ² PFT1254FP20 ²	PFT12523P20 ² PFT1254FP20 ²
		400W PSMH	Type II/III Type IV	PFT14023P20 ² PFT1404FP20 ²	PFT14023P20 ² PFT1404FP20 ²	PFT14023P20 ² PFT1404FP20 ²
	25' Pole	400W PSMH	Type II/III Type IV	PFT14023P25 ² PFT1404FP25 ²	PFT14023P25 ² PFT1404FP25 ²	PFT14023P25 ² PFT1404FP25 ²
		30' Pole	400W PSMH	Type II/III Type IV	PFT14023P30 ³ PFT1404FP30 ³	PFT14023P30 ³ PFT1404FP30 ³
Dual Fixture 	15' Pole	175W PSMH	Type II/III Type IV	PFT21723P15 ² PFT2174FP15 ²	PFT21723P15 ² PFT2174FP15 ²	PFT21723P15 ² PFT2174FP15 ²
	20' Pole	250W PSMH	Type II/III Type IV	PFT22523P20 ² PFT2254FP20 ²	PFT22523P20 ² PFT2254FP20 ²	PFT22523P20 ² PFT2254FP20 ²
		400W PSMH	Type II/III Type IV	PFT24023P20 ² PFT2404FP20 ²	PFT24023P20 ² PFT2404FP20 ²	PFT24023P20 ² PFT2404FP20 ²
	25' Pole	400W PSMH	Type II/III Type IV	PFT24023P25 ² PFT2404FP25 ²	PFT24023P25 ² PFT2404FP25 ²	PFT24023P25 ² PFT2404FP25 ²
		30' Pole	400W PSMH	Type II/III Type IV	PFT24023P30 ³ PFT2404FP30 ³	PFT24023P30 ⁴ PFT2404FP30 ⁴
METAL HALIDE (MH)						
Single Fixture 	15' Pole	175W MH	Type II/III Type IV	PFT11723M15 ² PFT1174FM15 ²	PFT11723M15 ² PFT1174FM15 ²	PFT11723M15 ² PFT1174FM15 ²
	20' Pole	250W MH	Type II/III Type IV	PFT12523M20 ² PFT1254FM20 ²	PFT12523M20 ² PFT1254FM20 ²	PFT12523M20 ² PFT1254FM20 ²
		400W MH	Type II/III Type IV	PFT14023M20 ² PFT1404FM20 ²	PFT14023M20 ² PFT1404FM20 ²	PFT14023M20 ² PFT1404FM20 ²
	25' Pole	400W MH	Type II/III Type IV	PFT14023M25 ² PFT1404FM25 ²	PFT14023M25 ² PFT1404FM25 ²	PFT14023M25 ² PFT1404FM25 ²
		30' Pole	400W MH	Type II/III Type IV	PFT14023M30 ³ PFT1404FM30 ³	PFT14023M30 ³ PFT1404FM30 ³
Dual Fixture 	15' Pole	175W MH	Type II/III Type IV	PFT21723M15 ² PFT2174FM15 ²	PFT21723M15 ² PFT2174FM15 ²	PFT21723M15 ² PFT2174FM15 ²
	20' Pole	250W MH	Type II/III Type IV	PFT22523M20 ² PFT2254FM20 ²	PFT22523M20 ² PFT2254FM20 ²	PFT22523M20 ² PFT2254FM20 ²
		400W MH	Type II/III Type IV	PFT24023M20 ² PFT2404FM20 ²	PFT24023M20 ² PFT2404FM20 ²	PFT24023M20 ² PFT2404FM20 ²
	25' Pole	400W MH	Type II/III Type IV	PFT24023M25 ² PFT2404FM25 ²	PFT24023M25 ² PFT2404FM25 ²	PFT24023M25 ² PFT2404FM25 ²
		30' Pole	400W MH	Type II/III Type IV	PFT24023M30 ³ PFT2404FM30 ³	PFT24023M30 ⁴ PFT2404FM30 ⁴

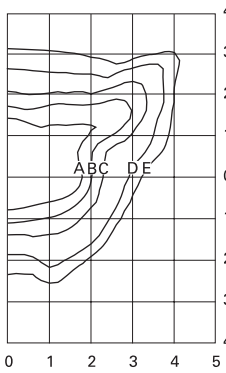
NOTES: 10 or 9 are noted where needed to designate a heavier gauge pole.

² Supplied with 4A Square Straight Steel shaft (SSS), anchor bolts (AB1), template (TMP1) and base cover. 15' combo SSS4A15SFM4, 20' combo SSS4A20SFM4 and 25' combo SSS4A25SFM4.

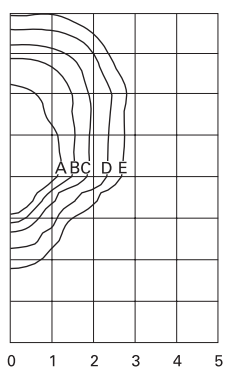
³ Supplied with 5A Square Straight Steel shaft (SSS), anchor bolts (AB1), template (TMP1) and base cover. 25' combo SSS5A25SFM4 and 30' combo SSS5A30SFM4.

⁴ Supplied with 5M Square Straight Steel shaft (SSS), anchor bolts (AB1), template (TMP1) and base cover. 30' combo SSS5M30SFM4.

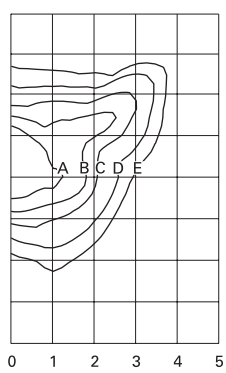
⁵ Supplied with 6M Square Straight Steel shaft (SSS), anchor bolts (AB3), template (TMP2) and base cover. 30' combo SSS6M30SFM4.



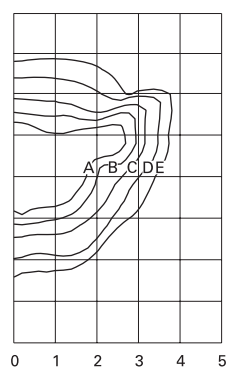
PFT14023M (Type III)
400-Watt MH Type III Formed
40,000-Lumen Clear Lamp



PFT1404FH (Type IV)
400-Watt HPS Type IV Formed
50,000-Lumen Clear Lamp



PFT12523M (Type III)
250-Watt MH Type III Formed
21,000-Lumen Clear Lamp



PFT14023M (Type II)
400-Watt MH Type II Formed
40,000-Lumen Clear Lamp

Footcandle Table

Select mounting height and read across for footcandle values of each isofootcandle line. Distance in units of mounting height.

Mounting Height	Footcandle Values for Isofootcandle Lines				
	A	B	C	D	E
20'	3.00	1.50	0.75	0.30	0.15
25'	2.00	1.00	0.50	0.20	0.10
30'	1.38	1.69	0.34	0.13	0.06