

DESCRIPTION

The ADA compliant 698 Medallion Wall Luminaire features soft omnidirectional illumination.

SPECIFICATION FEATURES

Material

Pre-painted white aluminum mounting pan with a matte white acrylic diffuser and clear acrylic round or square panel with frosted center. Optional frame is cold rolled steel, brass, aluminum, or bronze.

Finish

Standard: Matte White (MW) or Matte Black (MB).
Premium: Satin Chrome (SC), Polished Chrome (PC), Satin Brass (SB), Polished Brass (PB), Lacquered Satin Aluminum (SAL), Satin Copper (SCP), Polished Copper (PCP), Oxidized Copper (OCP), Satin Nickel (SN), Polished Nickel (PN), Oxidized Brass (OBRS), Lacquered Satin Chrome (SCL), Lacquered Satin Nickel (SNL), Natural Aluminum (NA), Gun Metal (GNM), or Custom Color (CC). Matte white painted aluminum mounting pan.

Optics

Refer to
www.shaperlighting.com for complete photometrics.

Ballast

Integral electronic HPF, multi-volt 120/277V (347V Canada),

thermally protected with end-of-life circuitry to accommodate the specified lamp wattage.

Lamp/Socket

Two (2) 13W (2GX7) 4-pin low wattage CFL lamps, two (2) 26W (G24q-3) 4-pin quad CFL lamps or two (2) 40WT-10 lamps. CFL socket injection molded plastic. INC socket fired ceramic rated for 660W-250V Lamps furnished by others.

Installation

Supplied with a universal circular strap for a standard 4" J-box or plaster ring.

Options

Damp Location (DL): All Painted Finishes, Lacquered Satin Chrome (SCL) and Lacquered Satin Nickel (SNL) finishes only, Closed Top and Bottom Diffuser - (TBC), Dimming Ballast - Contact the factory for ballast options (DM), Remote Emergency Battery - Supplied by others (REM).

Medallions - Clear "Green Glass" Acrylic with Frosted Center (GGA), Clear Glass with Frosted Center (GL), Acrylic "Peach" (PCH), Acrylic "Verdi" (VRD), Acrylic "Agate" (AE), Acrylic

Catalog #		Type
Project		
Comments		Date
Prepared by		

"Quartz" (QZ) Evo* (MOD-contact factory), Mezzo* (MOD-contact factory) and or, Frame (F). Optional solid metal square or round medallions and custom graphics - contact factory. Energy Star Rating - Consult factory. MRI Applications (INC only) - Contact Factory.

* Evo, and Mezzo are two examples of a new material from 3Form®, referred to as ECO Resin panels and are just two of the hundreds of the options available - Contact the factory.

Labels

U.L. and C.U.L approved for indoor and damp location. See options for damp location finishing requirements. ADA compliant.

Modifications

Shaper's skilled craftspeople with their depth of experience offer the designer the flexibility to modify standard wall luminaires for project specific solutions. Contact the factory regarding scale options, unique finishes, mounting, additional materials/colors, or decorative detailing.



698 SERIES

Interior Wall Luminaire
Luminous Medallion



ORDERING INFORMATION

Sample Number: 698-RD-CFL/2/26-277V-PCP

Series	Style	Lamp	Voltage	Finish	Options
698 = Luminous Medallion	RD = Round SQ = Square	CFL/2/13 CFL/2/26 INC/2/40	120V 277V ¹ 347V ¹	NA = Natural Aluminum <u>Standard</u> MB = Matte Black MW = Matte White <u>Premium</u> CC = Custom Color GNM = Gun Metal OBRS = Oxidized Brass OCP = Oxidized Copper PB = Polished Brass PC = Polished Chrome PCP = Polished Copper PN = Polished Nickel SAL = Lacquered Satin Aluminum SB = Satin Brass SC = Satin Chrome SCL = Lacquered Satin Chrome SCP = Satin Copper SN = Satin Nickel SNL = Lacquered Satin Nickel	AE = Acrylic "Agate" GL = Plate Glass PCH = Acrylic "Peach" QZ = Acrylic "Quartz" VRD = Acrylic "Verdi" DL = Damp Location DM = CFL Dimming Ballast ² GGA = Green Glass Acrylic F = Frame REM = Remote Emergency Battery ³ TBC = Top and Bottom Cover

Notes:

- Available with CFL only.
- Consult the factory for available options.
- Supplied by others.

ADA AMERICAN DISABILITIES ACT (ADA)

Shaper offers a large selection of ADA interior and exterior wall luminaires. ADA requires all fixtures below 68" to have a maximum projection of 4".

SUSTAINABLE DESIGN

Shaper has a long-standing history of offering environmentally-friendly fixtures. The copper and bronze alloys used in our exterior luminaires feature up to 98% recycled content, contribute less undesirable air emissions compared to painted aluminum and are easy to recycle.

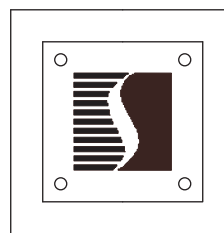
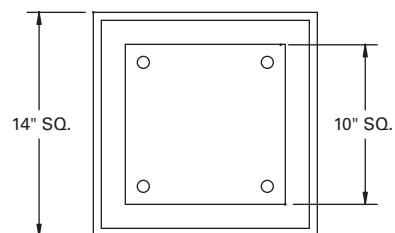
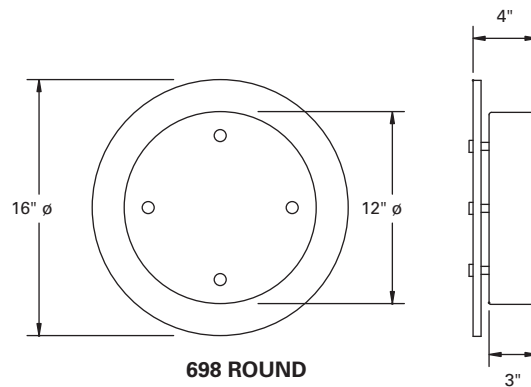
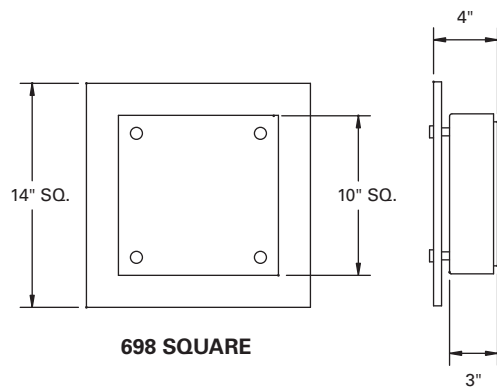
MRI MAGNETIC RESONANCE IMAGING (MRI)

Lighting fixtures for MRI facilities are specialized and unique, requiring non-ferrous construction. Fluorescent fixtures cannot be used due to the ferrous parts in ballasts and lampholders. Modified incandescent fixtures meet the requirements.

ENERGY STAR

Shaper now offers a wide variety of fixtures that can be provided with an Energy Star Rating.

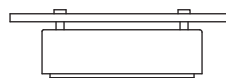
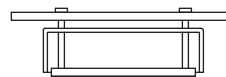
Refer to the Icon Legend
Link on shaperlighting.com.



MEDALLIONS

CUSTOM GRAPHIC - Contact factory (MOD)

WITH FRAME,
 CLEAR "GREEN GLASS" ACRYLIC WITH FROSTED CENTER (GGA),
 CLEAR GLASS WITH FROSTED CENTER (GL),
 ACRYLIC "PEACH" PCH),
 ACRYLIC "VERDI" (VRD), EVO (EO),
 ACRYLIC "AGATE" (AE),
 ACRYLIC "QUARTZ" (QZ),
 MEZZO (MO) MOD



CLOSED TOP AND BOTTOM (TBC)