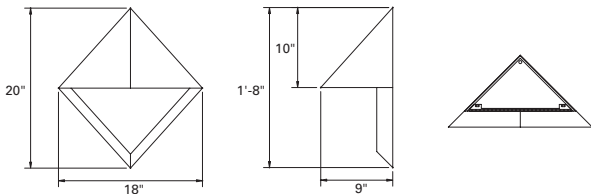


# SHAPER™



## 695-WP-DB SERIES

695-WP Half Pyramid with Direct Illumination and a Back Panel.



Sample Number: 695-WP-DB-MH/1/70-277V-GM

Series	Lamp	Voltage	Finish <sup>3, 4</sup>	Options
<b>695-WP-DB =</b>	CFL/1 (26/32/42W-Triple)	120V	NBZ (standard),	C
Half Pyramid w/	INC/1/60	277V <sup>1</sup>	BK, BM, CC, DP,	PH
Back Panel	MH/1/50	347V <sup>2</sup>	GM, GRM, GY,	QR <sup>5</sup>
	MH/1/70		SCL, SM, WH	
	MH/1/100			

Notes:  
1 CFL and MH only.  
2 Available with CFL only.  
3 Premium TGIC polyester powder coat paint, 2.5 mil nominal thickness for superior protection against fade and wear.  
4 Bronze will weather to a dark bronze patina.  
5 MH only.

### MATERIAL

Solid bronze construction with a clear textured refractive glass lense for MH or white acrylic lense for incandescent and CFL lamps.

### BALLAST

Integral electronic HPF, multi-volt 120/277V (347V Canada), thermally protected with end-of-life circuitry to accommodate specified lamp wattage. Integral metal halide ballast is electronic HPF, multi-volt 120/277V for the specified lamp wattage. 347V ballast for metal halide - Contact factory.

### INSTALLATION

Supplied with a universal mounting back for a standard 4" J-box or plaster ring. Optional rear (through wall) feed conduit mounting.

### LAMP/SOCKET

One (1) 26W, 32W (GX24q-3) or 42W (GX24q-4) 4-pin triple tube CFL lamp or one (1) 60W A-19 lamp. CFL socket injection molded plastic. INC socket fired ceramic rated for 660W-250V. Metal halide is ceramic pulse-rated, 4KV. Lamps furnished by others.

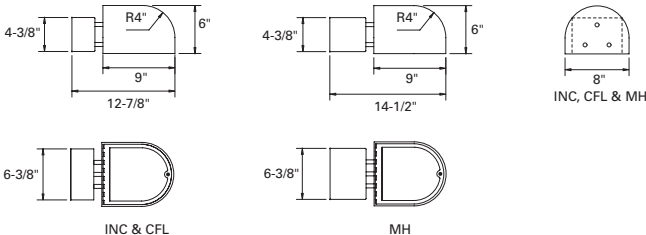
### FINISH AND OPTIONS

See page 1020 for finish details and options.



## 697-WP SERIES

The 697-WP features a compact cast Aluminum Hood Downlight.



Sample Number: 697-WP-INC/1/100-120V-GM

Series	Lamp	Voltage	Finish <sup>3</sup>	Options
<b>697-WP =</b>	CFL/1 (26/32/42W-Triple)	120V	BK, WH (standard),	C
Hood Downlight	INC/1/100	277V <sup>1</sup>	BM, CC, DP, GM,	QR <sup>4</sup>
	MH/1/50	347V <sup>2</sup>	GRM, GY, SM	TGL <sup>4</sup>
	MH/1/70			PH
	MH/1/100			

Notes:  
1 CFL and MH only.  
2 Available with CFL only.  
3 Premium TGIC polyester powder coat paint, 2.5 mil nominal thickness for superior protection against fade and wear.  
4 MH only.

### MATERIAL

Cast aluminum construction with clear tempered refractive glass for MH incandescent or 1/8" white acrylic for incandescent and CFL lamps. Optional clear tempered glass for full cut-off.

### BALLAST

Integral electronic HPF, multi-volt 120/277V (347V Canada), thermally protected with end-of-life circuitry to accommodate the specified lamp wattage. Metal halide ballasts are electronic HPF, multi-volt 120/277V for the specified lamp wattage. 347V ballasts for metal halide - Contact factory.

### INSTALLATION

Supplied with a mounting back for a standard 4" J-box or stucco ring. Optional rear (through wall) feed conduit mounting.

### LAMP/SOCKET

One (1) 26W, 32W (GX24q-3) or 42W (GX24q-4) 4-pin triple tube CFL lamp or one (1) 50W, 70W or 100W ED-17 metal halide lamp or one (1) 100W A-19 lamp. CFL socket injection molded plastic. INC socket fired ceramic rated for 660W-250V. Metal halide socket ceramic pulse-rated, 4KV. Lamps furnished by others.

### FINISH AND OPTIONS

See page 1020 for finish details and options.