

DESCRIPTION

689 feature a Double Ring Baffle with an optional luminous diffuser.

Catalog #		Type
Project		
Comments		Date
Prepared by		

SPECIFICATION FEATURES

Material

Painted or natural aluminum supplied with an aluminum hexcel louver. Matte white acrylic. Optional 1/8" matte acrylic baffle diffuser or sandblasted tempered clear glass lens.

Finish

Standard: Natural Aluminum (NA). [Sustainable Design]
Premium: Matte White (MW),
Lacquered Satin Aluminum (SAL)
or Custom Color (CC).

Optics

Refer to
www.shaperlighting.com for
complete photometrics.

Ballast

Integral electronic HPF, multi-volt
120/277V (347V Canada),
thermally protected with end-of-
life circuitry to accommodate the
specified lamp wattage.

Lamp/Socket

689: One (1) 26W or 32W
(Gx24q-3) 4-pin triple tube CFL
lamp, one (1) 100W A-19,
150WPAR38, 75WPAR30L, or
50W PAR20 lamp. CFL socket
injection molded plastic. INC
socket fired ceramic rated for
660W-250V. Lamps furnished by
others.

Installation

Supplied with a universal
circular strap for a standard 4"
J-box or plaster ring.

Options

CFL Dimming Ballast - Contact
the factory for ballast options,
(DM), Remote Emergency Battery
- Supplied by others (REM),
Acrylic Baffle Diffuser (AB),
Sandblasted Tempered Clear
Glass Lens (TL), Cobalt Blue
Acrylic Baffle (CBA), Perf Band
(PFB), Damp Location (DL): All
Painted Finishes only. Energy
Star Rating - Contact factory. MRI

Applications (INC only) - Contact
Factory.

Labels

U.L. and C.U.L approved for
indoor and damp location. See
options for damp location
finishing requirements.

Modifications

Shaper's skilled craftspeople
with their depth of experience
offer the designer the flexibility
to modify standard wall
luminaires for project specific
solutions. Contact the factory
regarding scale options, unique
finishes, mounting, additional
materials/colors, or decorative
detailing.



689 SERIES

Interior Wall Luminaire
Starter Collection
Ring Baffled



ORDERING INFORMATION

Sample Number: 689-INC/1/100-120V-SAL

Series	Lamp	Voltage	Finish	Options
689 =Ring Baffle w/ Arm Mount	CFL/1 (26/32W-Triple) INC/1/100 PAR/1/150	120V 277V ¹ 347V ¹	<u>Standard</u> NA =Natural Aluminum <u>Premium</u> CC =Custom Color MW=Matte White SAL =Lacquered Satin Aluminum	AB =Acrylic Baffle CBA =Cobalt Blue Acrylic Baffle DL =Damp Location DM =CFL Dimming Ballast ² REM =Remote Emergency Battery ³ PFB =Perforated Band TL =Tempered Sandblasted Glass Lens

Notes:

¹ Available with CFL only.

² Consult the factory for available options.

³ Supplied by others.



STARTER COLLECTION

Shaper's exclusive Starter Collection fixtures
are featured throughout the Shaper product
line. The concept of offering highly styled,
affordable fixtures was introduced over
fourteen years ago and has become one of
our fastest growing lines. The design
premise, basic construction, clean lines
and unadorned shapes are highly desirable
in modern architectural environments.



SUSTAINABLE DESIGN

Shaper has a long-standing history of
offering environmentally-friendly fixtures.
The copper and bronze alloys used in our
exterior luminaires feature up to 98% re-
cycled content, contribute less undesirable
air emissions compared to painted alumi-
num and are easy to recycle.



MAGNETIC RESONANCE IMAGING (MRI)

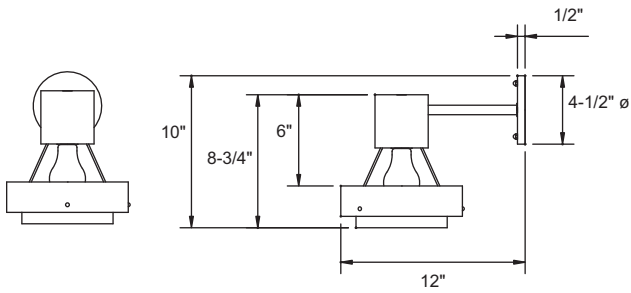
Lighting fixtures for MRI facilities are
specialized and unique, requiring non-
ferrous construction. Fluorescent fixtures
cannot be used due to the ferrous parts in
ballasts and lampholders. Modified incan-
descent fixtures meet the requirements.



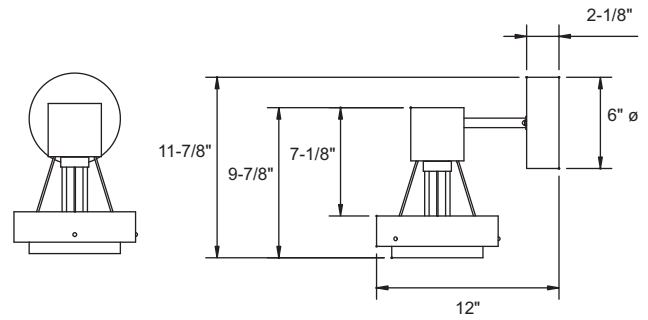
ENERGY STAR

Shaper now offers a wide variety
of fixtures that can be provided
with an Energy Star Rating.

Refer to the Icon Legend
Link on shaperlighting.com.

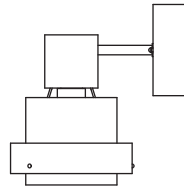


AM INC

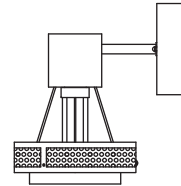


AM CFL

OPTIONS



ACRYLIC BAFFLE DIFFUSER (AB)



PERF BAND (PFB)