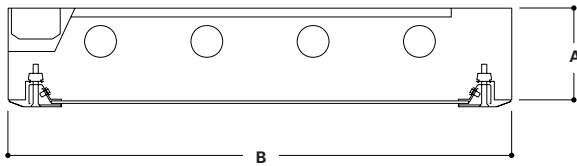
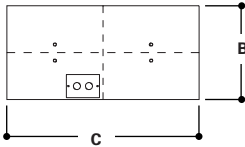


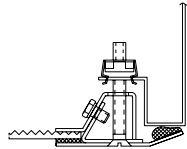
DIMENSIONS



MOUNTING



DOOR FRAME



	A	B	C
CFS	4 5/16"	11 11/16"	24"
1' x 2'	(110mm)	(297mm)	(610mm)
CFS	4 5/16"	11 11/16"	48"
1' x 4'	(110mm)	(297mm)	(1219mm)
CFS	4 5/16"	23 11/16"	24"
2' x 2'	(110mm)	(602mm)	(610mm)
CFS	4 5/16"	23 11/16"	48"
2' x 4'	(110mm)	(602mm)	(1219mm)

ORDERING INFORMATION

SAMPLE NUMBER: CFS-24-440-120-IP12-LE3-SSP-EBP

Series	Number of Lamps	Voltage ⁽³⁾	Lens Type	Ballast ³	Door/Finish Options	Options
CFS=Fluorescent Surface Type	1,2,3,4	120=120V 277=277V UNV=120V through 277V	IK12=K-12 Prismatic Acrylic IP12=K-12 Prismatic Polycarbonate KSH25 1=Bat Wing Distribution 93=Prismatic Tempered Glass	LE3=Energy Saving Ballast for use with T12 Lamp LEOC8=Energy Saving Ballast for use with T8 Lamp Electronic Ballast ² EB51=(1) Ballast for use with T5 Lamp EB52=(2) Ballasts for use with T5 Lamp EB81=(1) Ballast for use with T8 Lamp EB82=(2) Ballasts for use with T8 Lamp EB21=(1) Ballast for use with T12 Lamp EB22=(2) Ballasts for use with T12 Lamp EBX1=(1) Ballast for use with Biaxial Lamp EBX2=(2) Ballasts for use with Biaxial Lamp	CRP=CRS/Polyester Powder Finish SSN=Stainless Steel Door/ Brushed 304 Finish SSP=Stainless Steel Door/Polyester Powder Coat Finish ALP=Formed Aluminum Door/Polyester Powder Finish ALX=Extruded ⁴ Aluminum/ Anodized ALXP=Extruded ⁴ Aluminum/ Polyester Powder Coat Finish	EBP=Emergency Battery Pack GLR=Fuse and Holder RIF=Radio Frequency Interference Filter DSL1=Digital Lighting System Dimming. See DLS Section for details. Housing Options SHN=Stainless Steel, Brushed 304 Finish SHP=Stainless Steel, Polyester Powder Finish ALH=Aluminum, Polyester Powder Finish
Width 12=12" (3 Lamps Max.) 24=24"						
Lamp Type 2' Fixture Length T5 Fluorescents 114=(1) 14W Lamp 214=(2) 14W Lamps 314=(3) 14W Lamps 414=(4) 14W Lamps 124=(1) 24W HO Lamp 224=(2) 24W HO Lamps 324=(3) 24W HO Lamps 424=(4) 24W HO Lamps T8 Fluorescents 217=(2) 17W Lamps 417=(4) 17W Lamps T12 Fluorescents 220=(2) 20W Lamps 420=(4) 20W Lamps Biaxial Fluorescents 240BX=(2) 40W Lamps 340BX=(3) 40W Lamps	4' Fixture Length T5 Fluorescents 128=(1) 28W Lamp 228=(2) 28W Lamps 328=(3) 28W Lamps 428=(4) 28W Lamps 154=(1) 54W HO Lamp 254=(2) 54W HO Lamps 354=(3) 54W HO Lamps 454=(4) 54W HO Lamps T8 Fluorescents 232=(2) 32W Lamps 332=(3) 32W Lamps 432=(4) 32W Lamps T12 Fluorescents 240=(2) 40W Lamps 340=(3) 40W Lamps 440=(4) 40W Lamps					

NOTES: For additional options, consult your Cooper Lighting Representative. Specifications and Dimensions subject to change without notice.

¹ The KSH25 provides improved visual performance and wide angle distribution. This lens has an integral prism pattern designed so that prisms face the lamp cavity and still supply superior photometrics. Highly recommended for all high tech manufacturing environments. ² For specific electronic ballast, specify brand and catalog number. ³ Products also available in non-US voltages and 50Hz for international markets. Consult your Cooper Lighting Representative for availability and ordering information. ⁴ Not rated for 200 PSI hose down.

DESCRIPTION

The Fail-Safe CFS Series is designed for use in non-laminar air flow clean rooms. This surface mounted clean room luminaire has a hole-free design and is enclosed and gasketed to protect against infiltration of particles and airborne bacteria. The sealed housing and door frame allow relamping without contamination of the clean areas. An emergency battery pack is available as an option. These luminaires are U.L. listed and C.S.A. certified for wet locations and are manufactured in accordance with U.S.D.A. and F.D.A. All fixtures have been tested and reported in compliance with Federal Standard 209E, Class 100 (M3.5). 200 PSI Rating is standard.



CFS

1 4 W - 1 6 0 W
Fluorescent

1' x 2', 1' x 4', 2' x 2', 2' x 4'
FLUORESCENT SURFACE
ONE-PIECE DOOR

- Lens is clear extruded with prisms positioned inside fixture and smooth surface on the outside for easy cleaning
- Flush mounted, stainless steel machine screws
- Die-formed, 20 ga. CRS housing contains no holes. Standard white high reflectance polyester powder coat finish
- Unique, Particulock™ lens retention system utilizes continuous, 18 ga. media clampdowns
- Two braided, stainless steel cables on one side of door provide hinging
- One-piece, 18 ga., fully gasketed, outside door with die-formed and beveled edges
- Standard Class P, CBM/ETL ballast
- White, closed cell, Flexiseal™ triple gasketing system
- Gasketed access plate with two flattened, 7/8" diameter knockouts