

FAIL-SAFE®



FDI

1 7 W - 8 0 W
Fluorescent

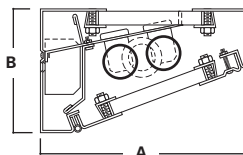
MAXIMUM SECURITY TASK/AMBIENT LUMINAIRE

- Lens choice of prismatic acrylic, prismatic polycarbonate or prismatic tempered glass on fixture side, clear polycarbonate or clear tempered glass on environmental side
- Stainless steel tamper-resistant TORX® screws are standard. Allen-head screws with center pin reject are optional
- Die-formed 14 ga. CRS body with continuous welded and ground ends. Standard white high reflectance polyester powder coat finish
- Lamps by others
- Lens secured by thru-studs and vertically adjustable internal CRS hold-downs
- Continuous concealed piano hinge
- One-piece, CRS door frame with die-formed edges (gauge to match housing)
- Standard Class P, CBM/ETL ballast
- U.L. listed, C.S.A. certified standard damp label

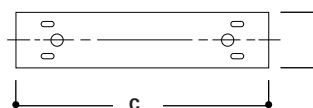
DESCRIPTION

The Fail-Safe FDI Series combines maximum security construction features with energy saving technology. This wall mount task/ambient luminaire utilizes a one-piece heavy gauge housing, security lensing and tamper resistant fasteners to maximize impact resistance and prevent unauthorized fixture penetration. U.L. listed and C.S.A. certified for damp locations.

DIMENSIONS



MOUNTING



	A	B	C
2' Nom. Length	9" (229mm)	5 1/4" (133mm)	25" (635mm)
4' Nom. Length	9" (229mm)	5 1/4" (133mm)	49" (1245mm)

ORDERING INFORMATION

SAMPLE NUMBER: FDI-240-120-80/86-LE3-RIF

<p>Product Family FDI=Maximum Security Task/Ambient Luminaires</p>	<p>Lamp Type 2' Nom. Length</p> <p>T5 Fluorescents 114=(1) 14W Lamp 214=(2) 14W Lamps</p> <p>T8 Fluorescents 117=(1) 17W Lamp 217=(2) 17W Lamps</p> <p>T12 Fluorescents² 120=(1) 20W Lamp 220=(2) 20W Lamps</p> <p>Biaxial Fluorescents 140BX=(1) 40W Lamp 240BX=(2) 40W Lamps</p> <p>4' Nom. Length</p> <p>T5 Fluorescents 128=(1) 28W Lamp 228=(2) 28W Lamps</p> <p>T8 Fluorescents 132=(1) 32W Lamp 232=(2) 32W Lamps</p> <p>T12 Fluorescents 140=(1) 40W Lamp 240=(2) 40W Lamps</p> <p>Voltage 120=120V 277=277V UNV=120V through 277V</p>	<p>Lens Type Inner Layer / Environmental Side (optional)</p> <p>90=.005 UV Absorbing Overlay</p> <p>84=.125 Clear Polycarbonate</p> <p>85=.187 Clear Polycarbonate</p> <p>86=.250 Clear Polycarbonate</p> <p>87=.375 Clear Polycarbonate</p> <p>81=.156 Prismatic Acrylic</p> <p>82=.187 Prismatic Polycarbonate</p> <p>83=.156 Prismatic Tempered Glass</p> <p>94=.187 Clear Tempered Glass</p> <p>96=.250 Clear Tempered Glass</p> <p>97=.375 Clear Tempered Glass</p> <p>Fixture Side</p> <p>80=.125 Prismatic Acrylic</p> <p>81=.156 Prismatic Polycarbonate</p> <p>82=.187 Prismatic Polycarbonate</p> <p>93=.156 Prismatic Tempered Glass</p>	<p>Ballast</p> <p>Blank=Magnetic Ballast (Standard)³</p> <p>LEOC8=T8 Energy Saving Ballast</p> <p>LE3=40W T12 Energy Saving Ballast</p> <p>Electronic Ballast¹</p> <p>EB81=(1) Ballast for use with T8 Lamp</p> <p>EB82=(2) Ballasts for use with T8 Lamp</p> <p>EB51=(1) Ballast for use with T5 Lamp</p> <p>EB52=(2) Ballasts for use with T5 Lamp</p> <p>EB21=(1) Ballast for use with T12 Lamp²</p> <p>EB22=(2) Ballasts for use with T12 Lamp²</p> <p>EBX1=(1) Ballast for use with Biaxial Lamp</p> <p>EBX2=(2) Ballasts for use with Biaxial Lamp</p>	<p>Options</p> <p>DSR=Duplex Security Receptacle</p> <p>EBP=Emergency Battery Pack</p> <p>FNL=Fluorescent Night Light (Lamp by others.)</p> <p>GLR=Fuse and Holder</p> <p>ISH=Internal Security Hinge (doubles the number of fasteners)</p> <p>RIF=Radio Interference Filter</p> <p>SPK=Speaker Housing Compartment (extends housing)</p> <p>On/Off Switches</p> <p>SPS=Security Push Button</p> <p>TCS=Touch Control System⁴</p> <p>Stainless Steel Housing</p> <p>SSN=Natural Brushed Finish</p> <p>SSP=Polyester Powder Coat Finish</p> <p>Fasteners</p> <p>SF3=Allen-Head (center pin reject)</p> <p>Accessories (Order Separately)</p> <p>9306=Allen-Head Wrench</p> <p>VRSD=TORX®-Head Vandal Resistant Screwdriver</p>
---	--	---	---	---

Notes: For additional options, consult your Cooper Lighting Representative. Specifications and Dimensions subject to change without notice. Electronic ballast may cause interference with other electronic devices. If interference occurs, move the device away from the product or plug/connect into a different circuit/outlet.

¹ For specific electronic ballast, specify brand and catalog number. ² Electronic ballast not available for F20T12 lamps.

³ For use with Compact Fluorescent, Biaxial, and 20W T12 lamps. ⁴ For additional information about the TCS option see pages 1106 and 1107.