

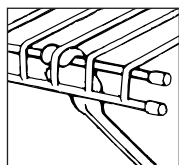
Part Chart Support Brackets needed per shelf:

Shelf Length	4' 1.2m	6' 1.8m	8' 2.4m	12' 3.7m
Wall to Wall Pared a pared	1	1	2	3
Wall to Open Pared a borde	2	2	3	4
Open to Open Borde a borde	3	3	4	5

1

Position support bracket on shelf as shown.

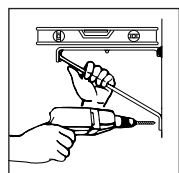
Coloque el soporte en la repisa tal como se muestra.



2

Level shelf. Drill 1/4" hole through wall using bracket as guide. DO NOT PUNCH HOLES. Space support brackets every 3'.

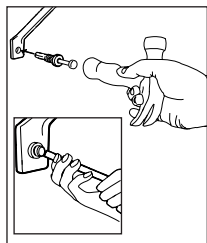
Nivele la repisa. Perfore un orificio de 6 mm a través de la pared usando el soporte como guía. USE TALADRO UNICAMENTE. Coloque los soportes a cada 91,5 cm de distancia.



3

Push pre-loaded anchor into drilled hole. Use bottom of hammer handle to push in pin. For removal, pry pin out with screwdriver.

Empuje el tarugo preinstalado dentro del orificio perforado. Use la parte inferior del mango del martillo para empujar la clavija hacia adentro. Para remover, palanquee la clavija sacándola con un destornillador.



If a ClosetMaid® product does not give user complete satisfaction when installed in accordance with manufacturer's instructions, it will be exchanged free of charge. Only the unsatisfactory part in a multi-piece product will be exchanged.

Consumer Toll-Free Help Line
1-800-874-0008
(U.S.A and Canada)
www.closetmaid.com

Manufacturer reserves the right to change specifications without notice.

Made in USA

©ClosetMaid Corporation 2004
Ocala, FL 34478-4400



01-84640

