

TECHZONE™ Ceiling System

Recessed and Pendant Fixtures



ZUMTOBEL

Armstrong® TechZone™ Compatible

RECESSED LENSED (RL)

Catalog No.s:

RL-I-MPO-64-lamping-U RL-I-MPO-65-lamping-U

RL-I-OLP-64-lamping-U RL-I-OLP-65-lamping-U

48" or 60" Tegular Fixture for 9/16" Grid

The RECESSED LENSED 6" x 4' (48") or 6" x 5' (60") is a narrow aperture recessed direct lensed luminaire for individual and continuous row mounting. A wireway channel running down the length of the housing on one side on the top makes it easy to connect fixtures for continuous runs. The lens options include either an MPO (MICRO-PYRAMIDAL OPTIC) LENS for a more focused distribution that directs light energy away from the high-angle glare zone, or an OPAL LENS for a softer, more diffused light distribution. Both lens options provide a continuous line of light in the ceiling while hiding the lamps from view.

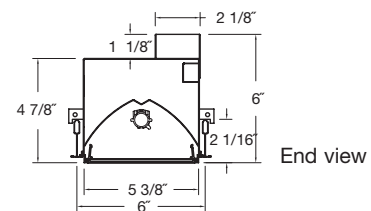
Lamp Options: 1 or 2, 4' or 5' T5 / T5HO lamps

The best combination of energy efficiency and lighting performance can be created by a simple 8' x 8' spacing pattern that works perfectly with the TechZone™ ceiling system, although linear continuous runs are very common.

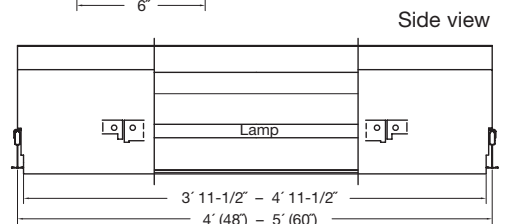
Suggested applications: Offices, lobbies, galleries, retail spaces, corridors and reception areas.



Recessed Lensed (RL)



End view



Side view

RECESSED BIVERGENCE

Catalog No.s:

RBIC-64-lamping-U

RBIC-65-lamping-U

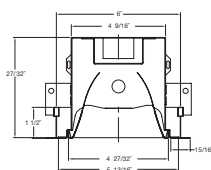
48" and 60" Lay-in Fixture for 9/16" and 15/16" Grid

The RECESSED BIVERGENCE 6" x 4' (48") or 6" x 5' (60") is a narrow aperture recessed direct louvered luminaire for individual and continuous row mounting. BIVERGENCE louver technology improves on the "Parabolic Louver" by directing light energy away from the glare zone to create pleasant working environments.

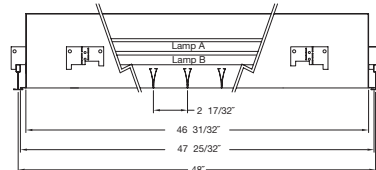
Lamp Options: 1 and 2 T5 / T5HO lamps; 1 and 2 T8 Lamps



BIVERGENCE Lay-in Recessed Fixture



End view (1) Lamp
T5/T5 HO fixture



Side view (2) Lamp T5/T5 HO fixture

Zumtobel Lighting Inc.

3300 Route 9W

Highland, NY 12528-2630

Technical Support: (845) 691-6262

www.zumtobel.us/armstrongtechzone



TECHZONE™ Ceiling System

Recessed and Pendant Fixtures

RECESSED LOUVER WITH LIGHT CHAMBER (RLLC)

Catalog No.s:

RLLC-I-64-lamping-U

RLLC-I-64-lamping-end panel options-U

RLLC-I-65-lamping-end panel options-U

RLLC-I-65-AR-lamping-center panel options-U

RLLC-I-65-COV-lamping-center panel options-U

48" or 60" Fixture for 9/16" Tegular or

15/16" Lay-In Grid

The RECESSED LLC 6" x 4' (48") or 6" x 5' (60") is a narrow aperture recessed direct luminaire with a matte white center louver and frosted acrylic side diffusers, for individual and continuous row mounting. A wireway channel running down the length of the housing on one side on the top makes it easy to connect fixtures for continuous runs. This is a highly versatile product range with a variety of sizes, lamping and other options. These include:

4' luminaire with a continuous louver.

Lamp Options: 1 or 2, 4' 28W T5 or 54W T5 HO lamps.

4' or 5' luminaire with a louver running down the center, and a panel at each end that can accommodate a variety of options including a blank cover, air return panel, sprinkler, speaker, daylight/occupancy sensor, or an MR16 halogen downlight.

Lamp Options: 1 or 2, 3' or 4' T5 or T5 HO lamps.

5' luminaire with a 3" blank cover (COV) or Air Return (AR) panel at each end, 2' louvers on either side, and a center feature that can accommodate a variety of options including a blank cover, air return panel, sprinkler, speaker, daylight/occupancy sensor, or an MR16 halogen downlight.

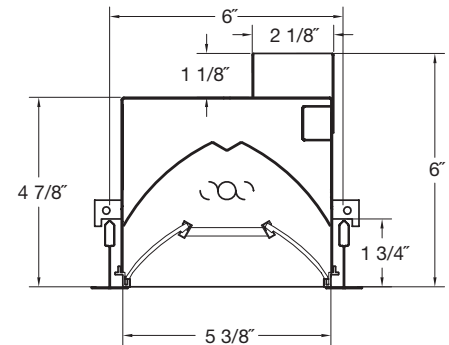
Lamp Options: 1 or 2, 2' 14W T5 or 24W T5 HO lamps

The 5' luminaire with the center options and the 2' lamps was originally developed for (with over 20,000 luminaires successfully installed) a major high-profile New York City office tower project.

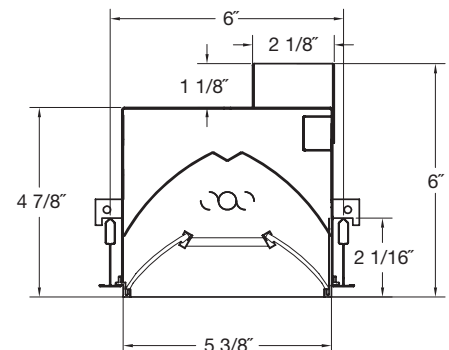
Suggested applications: Open and private offices, retail spaces and institutions.



Recessed Louver with Light Chamber (RLLC)



End view – 15/16" Lay-In grid



End view – 9/16" Tegular grid

Zumtobel Lighting Inc.

3300 Route 9W

Highland, NY 12528-2630

Technical Support: (845) 691-6262

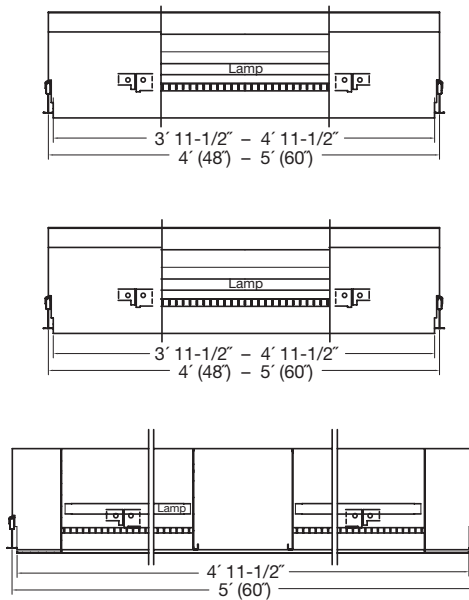
www.zumtobel.us/armstrongtechzone

TECHZONE™ Ceiling System

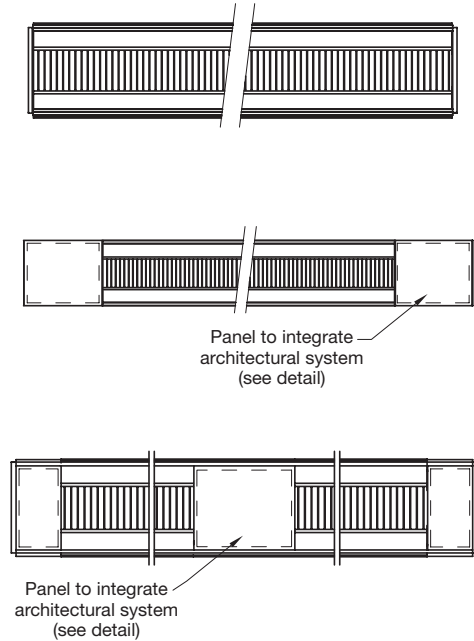
Recessed and Pendant Fixtures

RECESSED LOUVER WITH LIGHT CHAMBER (RLLC)

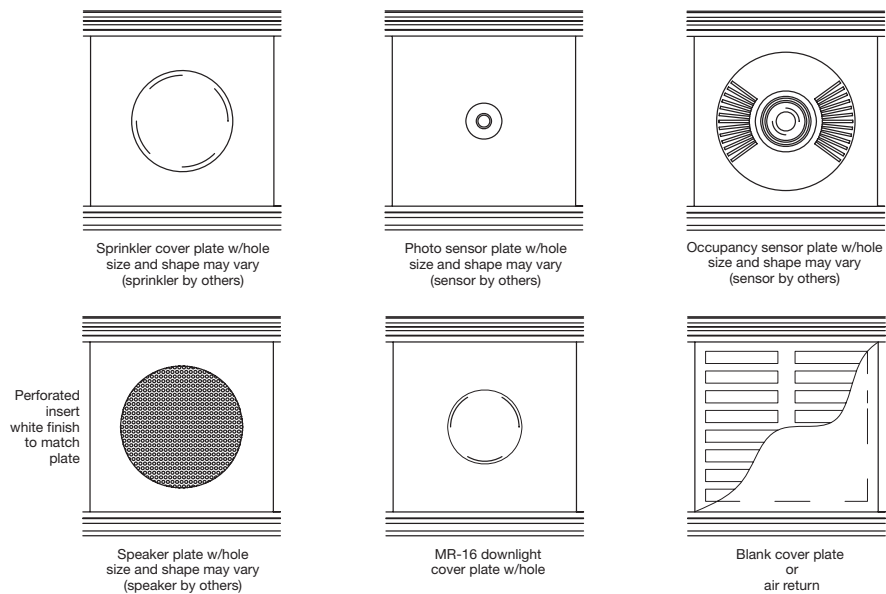
Side Views



Top Views



Detail of Middle and End Panel Options



Zumtobel Lighting Inc.

3300 Route 9W
Highland, NY 12528-2630
Technical Support: (845) 691-6262
www.zumtobel.us/armstrongtechzone

TECHZONE™ Ceiling System

Recessed and Pendant Fixtures

ARIA Pendant

Catalog Number:

AQ-lamping-4-T-DE-U-suspension length

ARIA is an indirect / direct pendant luminaire that combines precision optics with modern styling ideal for cutting edge architectural spaces. ARIA's light distribution is predominantly indirect to create pleasant glowing spaces with bright ceiling and wall surfaces.

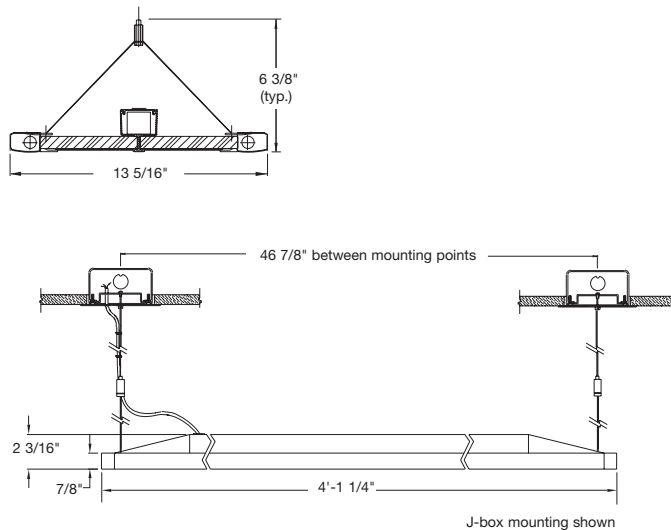
Lamp Options: (2) 28W T5 or 54W T5 HO lamps

Typical continuous row layouts may be spaced 8' to 10' on center. For more energy conscious layouts the ARIA may be spaced on an 8' x 8' pattern.



ARIA Pendant Fixture

Note: Fixtures must be independently supported.



All Zumtobel Lighting pendant fixtures are compatible with TechZone Ceiling Systems.



ZUMTOBEL

Zumtobel Lighting Inc.
3300 Route 9W
Highland, NY 12528-2630
Technical Support: (845) 691-6262
www.zumtobel.us/armstrongtechzone
CS-3739-0107

