



Installation Instructions 4271

Top Mount Kitchen Faucet

Thank you for selecting American-Standard...the benchmark of fine quality for over 100 years.

To ensure that your installation proceeds smoothly—please read these instructions carefully before you begin.



Certified to comply with ASME A112.18.1M

M968413

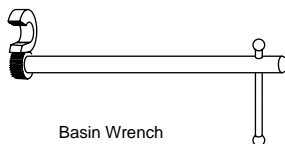
TOOLS REQUIRED



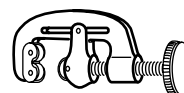
Channel Locks



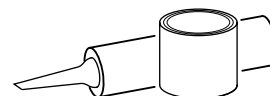
Adjustable Wrench



Basin Wrench



Tubing Cutter



Plumbers' Putty or Caulking

1 INSTALL FAUCET and SPRAY

CAUTION

Turn off hot and cold water supplies before beginning.

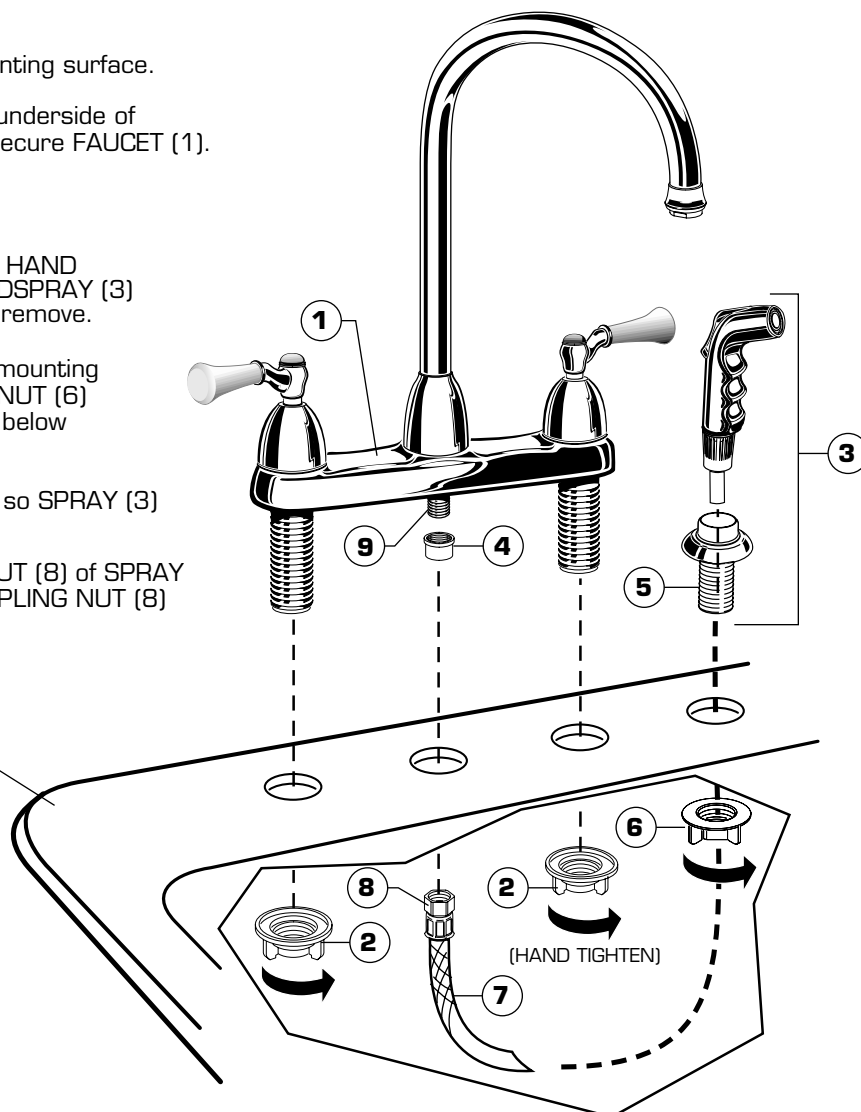
INSTALL FAUCET

- Place FAUCET (1) in position on sink or mounting surface.
- Assemble and tighten LOCKNUTS (2) from underside of sink or mounting surface. Hand tighten to secure FAUCET (1).

INSTALL SPRAY

- FAUCET (1) can be installed with or without HAND SPRAY (3). To install FAUCET (1) with HANDSPRAY (3) thread PIPE CAP (4) counter-clockwise and remove.
- Place the HOLDER (5) into the appropriate mounting hole. Assemble the SPRAY HOLDER WING NUT (6) onto the shank of SPRAY HOLDER (5) from below and tighten.
- Feed SPRAY HOSE (7) through HOLDER (4) so SPRAY (3) sits in HOLDER (5).
- From underneath sink, attach COUPLING NUT (8) of SPRAY HOSE (7) to HOSE SHANK (9). Tighten COUPLING NUT (8) firmly.

SINK OR
MOUNTING
SURFACE

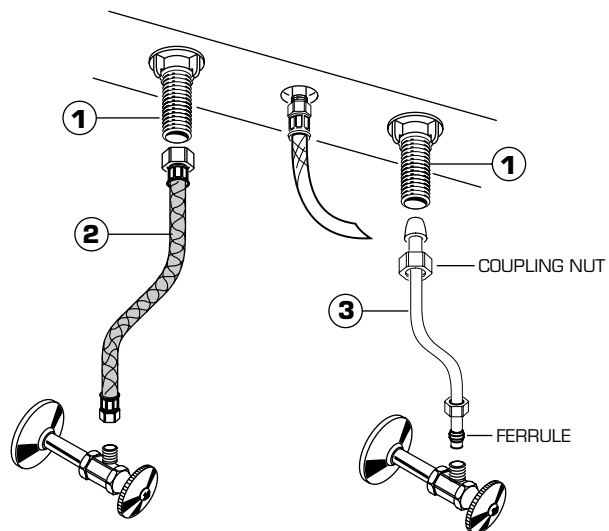


2

MAKE WATER SUPPLY CONNECTIONS

NOTE: FLEXIBLE SUPPLIES OR BULL-NOSE RISERS MUST BE PURCHASED SEPARATELY.

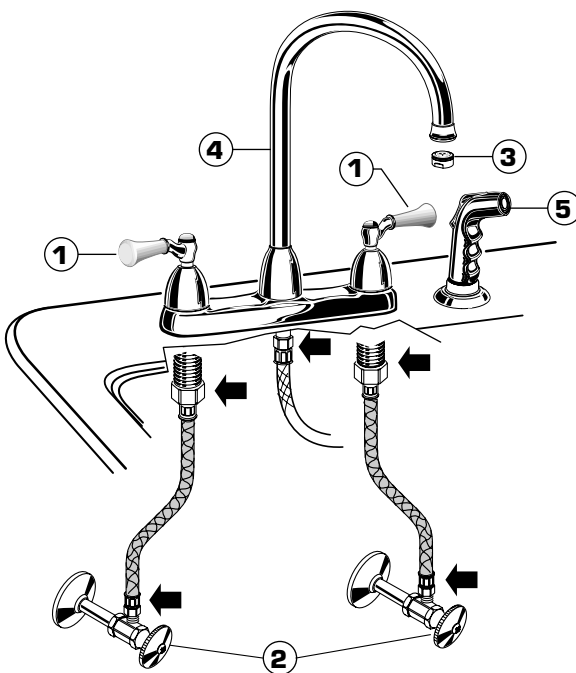
- Connect water supply to FAUCET (1) with 1/2" IPS FLEXIBLE SUPPLIES (2) or 3/8" O.D. BULL-NOSE RISERS (3).
- Use adjustable wrench to tighten connections. Do not over tighten. Be careful not to kink copper supply when bending. Use tubing cutter to cut to proper length.



3

TEST INSTALLED FITTING

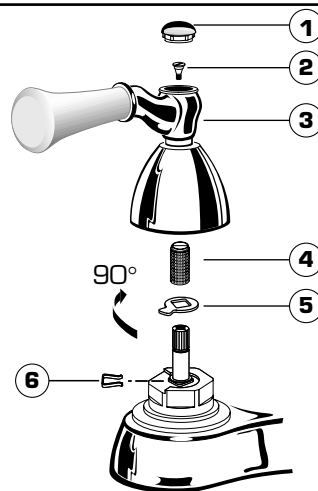
- With HANDLES (1) in OFF position, turn on WATER SUPPLIES (2) and check all connections for leaks. ➡
- Remove AERATOR (3).
- Operate both HANDLES to flush water lines thoroughly. Rotate SPOUT (4) in both directions.
- Replace AERATOR (3).
- Direct SPRAY (5) into sink and activate. Check hose connections for leaks. ➡



4

SERVICE

- To change direction of handle rotation, proceed as follows:
 - Turn valve to OFF position.
 - Pull out INDEX CAP (1) and remove HANDLE SCREW (2).
 - Pull off HANDLE (3).
 - Pull off STEM ADAPTER (4).
 - Remove SPRING CLIP (6).
 - Lift STOP WASHER (5), turn 90° and replace.
 - Replace SPRING CLIP (6) and STEM ADAPTER (4).
 - Reinstall HANDLE ASSEMBLY (1, 2 & 3).
- If spout drips, operate handles several times from OFF to ON position. Do not force - handles turn only 90°.



5

CARE INSTRUCTIONS:

DO: SIMPLY RINSE THE PRODUCT CLEAN WITH CLEAR WATER. DRY WITH A SOFT COTTON FLANNEL CLOTH.

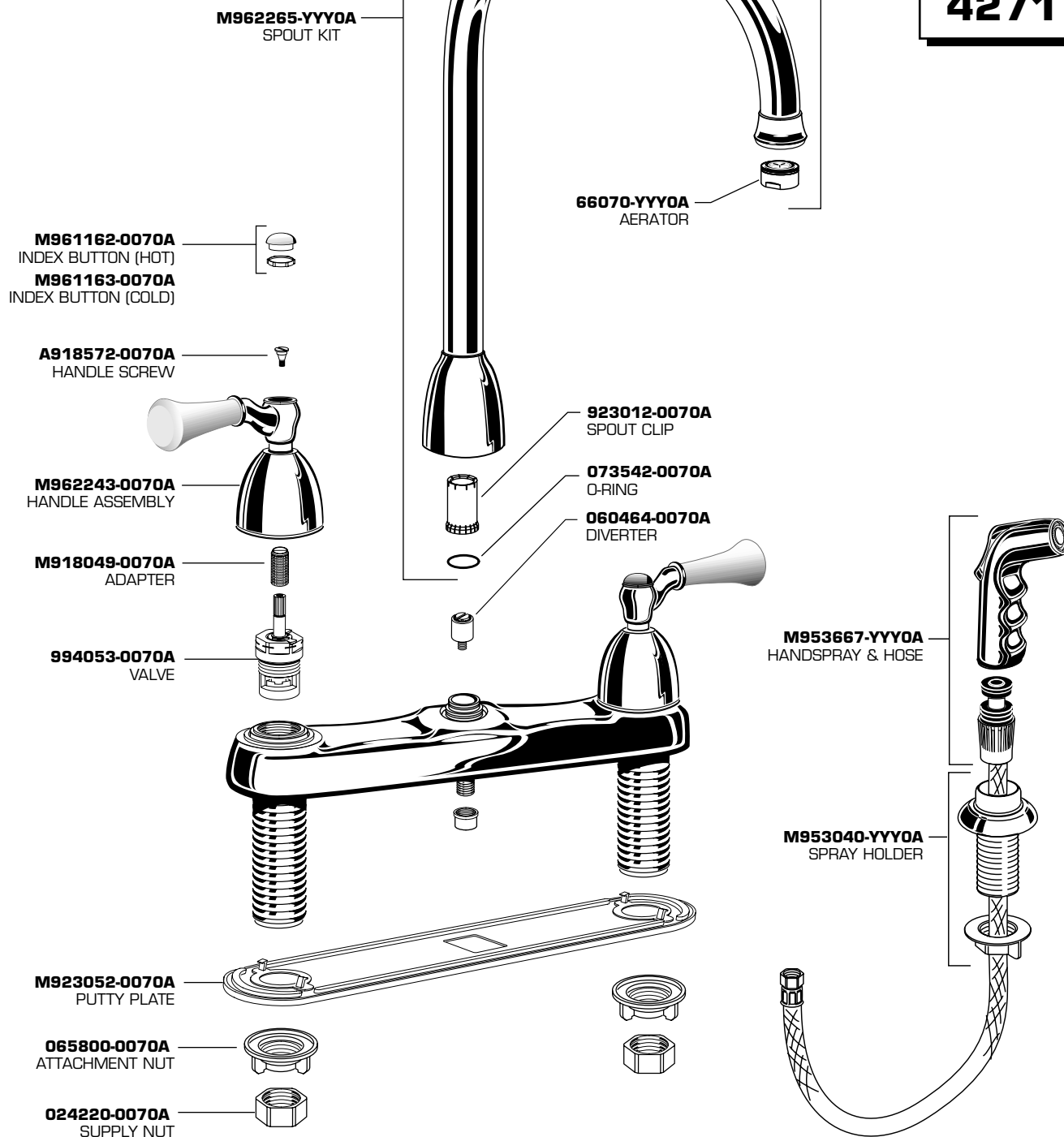
DO NOT: DO NOT CLEAN THE PRODUCT WITH SOAPS, ACID, POLISH, ABRASIVES, HARSH CLEANERS, OR A CLOTH WITH A COARSE SURFACE.

American Standard



TOP MOUNT KITCHEN FAUCET

4271



Replace the "YYY" with appropriate finish code

| | |
|--------|-----|
| CHROME | 002 |
| SATIN | 295 |



HOT LINE FOR HELP
For toll-free information and answers to your questions, call:
1-800 442-1902
Weekdays 8:00 a.m. to 8:00 p.m. EST

IN CANADA 1-800-387-0369 (TORONTO 1-905-306-1093)
Weekdays 8:00 a.m. to 7:00 p.m. EST

Product names listed herein are trademarks of American Standard Inc.
© American Standard Inc. 2003

M968413