

CHANDLER™ AMERICAST® ISLAND SINK

- Americast® brand engineered material
- Single bowl design
- Titanium enamel - heat resistant up to 1000°
- Acid-resisting glossy porcelain finish
- Top mount or undercounter installation
- Silicone sealant supplied
- Available CHO, 3 faucet hole configuration, or less fittings deck
- Customized hole punchings available (see page G57)

Top Mount/Undercounter:

- ☐ **7182.001** Center hole only
- ☐ **7182.803** 3 hole
- ☐ **7182.000** No faucet holes

Undercounter Installation Order:

- ☐ **791003-100** Mounting Kit (consists of cut-out templates and mounting hardware)

Nominal Dimensions with faucet hole

7182.001 and 7182.803:

419 x 381 x 216mm
(16-1/2" x 15" x 8-1/2")

Nominal Dimensions no faucet hole 7182.000:

419 x 314 x 216mm
(16-1/2" x 12-3/8" x 8-1/2")

Bowl sizes for all models:

330mm (13") wide
229mm (9") front to back
203mm (8") deep

Compliance Certifications -

Meets or Exceeds the Following Specifications:

- ASME A112.19.4M for Americast Plumbing Fixtures
- ASTM E162 for Flammability
- NFPA 258 for Smoke Density



7182.001/7182.803



7182.000

SEE REVERSE SIDE FOR ROUGHING-IN DIMENSIONS

To Be Specified:

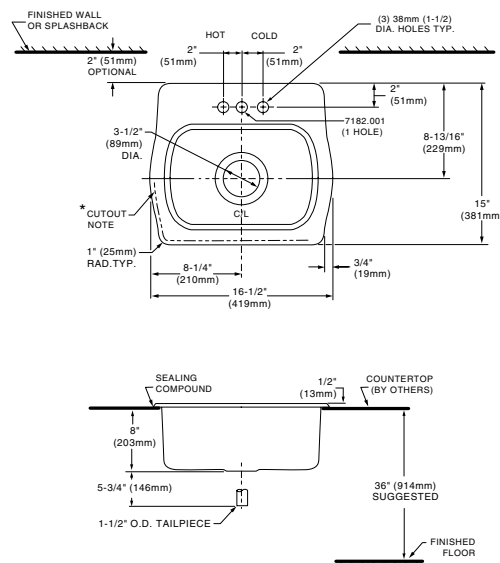
- ☐ Color:
- ☐ Faucet*:
- ☐ Faucet Finish:
- ☐ Basket Strainer: 4331.013
- ☐ Soap Dispenser: 4503.115, Color:
- ☐ Trap:

Optional Accessories:

- ☐ Small Wood Cutting Board: 9000.185
- ☐ Colander For Cutting Board: 8102.100, Color:

* See faucet section for available models

7182.001/803 Top Mount

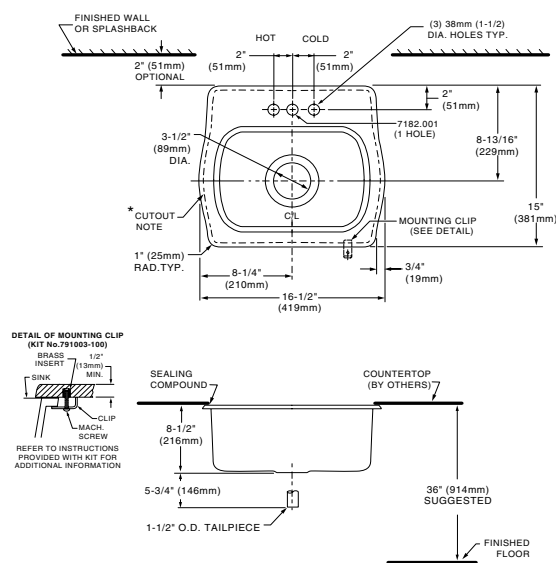


NOTES:

* FOR COUNTERTOP CUTOUT AND INSTALLATION INSTRUCTIONS USE TEMPLATE SUPPLIED WITH SINK.

FITTINGS NOT INCLUDED AND MUST BE ORDERED SEPARATELY.
PROVIDE SUITABLE REINFORCEMENT FOR ALL WALL AND COUNTERTOP SUPPORTS.

7182.001/803 Undercounter Mount

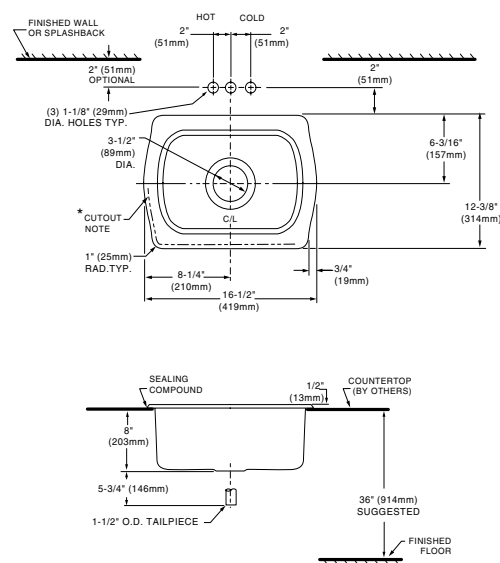


NOTES:

* TEMPLATE PROVIDED WITH MOUNTING KIT 791003-100 FOR UNDERCOUNTER, INSTALLATION AND COUNTERTOP CUTOUT.

FITTINGS AND UNDERCOUNTER MOUNTING KIT NOT INCLUDED AND MUST BE ORDERED SEPARATELY.
PROVIDE SUITABLE REINFORCEMENT FOR ALL WALL AND COUNTERTOP SUPPORTS.

7182.000 Top Mount



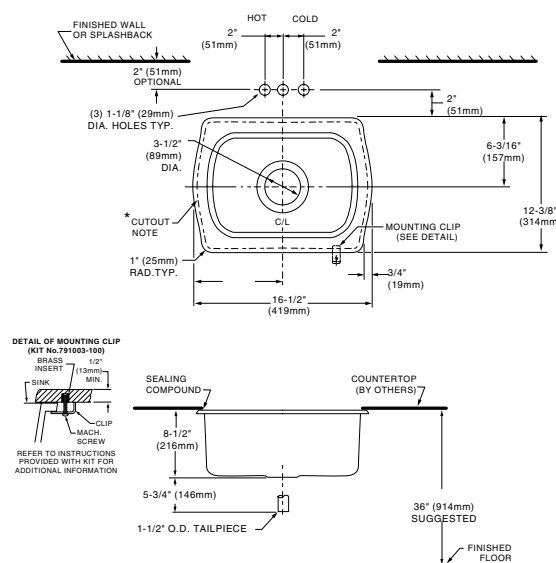
NOTES:

* FOR COUNTERTOP CUTOUT AND INSTALLATION INSTRUCTIONS USE TEMPLATE SUPPLIED WITH SINK.

FITTINGS NOT INCLUDED AND MUST BE ORDERED SEPARATELY.
PROVIDE SUITABLE REINFORCEMENT FOR ALL WALL AND COUNTERTOP SUPPORTS.

IMPORTANT: Dimensions of fixtures are nominal and may vary within the range of tolerances established by ASME Standard A112.19.4. These measurements are subject to change or cancellation. No responsibility is assumed for use of superseded or voided leaflet.

7182.000 Undercounter Mount



NOTES:

* TEMPLATE PROVIDED WITH MOUNTING KIT 791003-100 FOR UNDERCOUNTER, INSTALLATION AND COUNTERTOP CUTOUT.

FITTINGS AND UNDERCOUNTER MOUNTING KIT NOT INCLUDED AND MUST BE ORDERED SEPARATELY.
PROVIDE SUITABLE REINFORCEMENT FOR ALL WALL AND COUNTERTOP SUPPORTS.