

NEOLO™ ELONGATED FV TOILET

- Elongated flush valve toilet
- Vitreous china
- Low consumption (6.0 Lpf/1.6gpf)
- Wall outlet elongated bowl, angle back and base
- Siphon jet flush action
- Fully glazed 2" ballpass trapway
- 10" x 13" water surface area
- 1-1/2" inlet spud
- 4 bolt caps
- 100% factory flush tested

- ☐ **2529.016** Elongated bowl only, top spud, wall outlet
- ☐ **2530.016** Elongated bowl only, back spud, wall outlet
- ☐ **2531.016** Elongated bowl only, back spud, wall outlet, integral seat

Nominal Dimensions:

673 x 375 x 375mm

(26-1/2" x 14-3/4" x 14-3/4")

Recommended working pressure – between
30 psi at valve when flushing and 80 psi static

Fixture only, less seat, bolt caps, and flush valve

Compliance Certifications -**Meets or Exceeds the Following Specifications:**

- ASME A112.19.2 for Vitreous China Fixtures



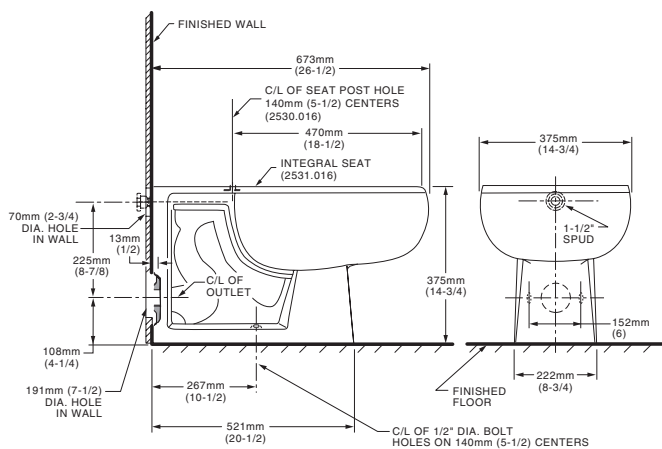
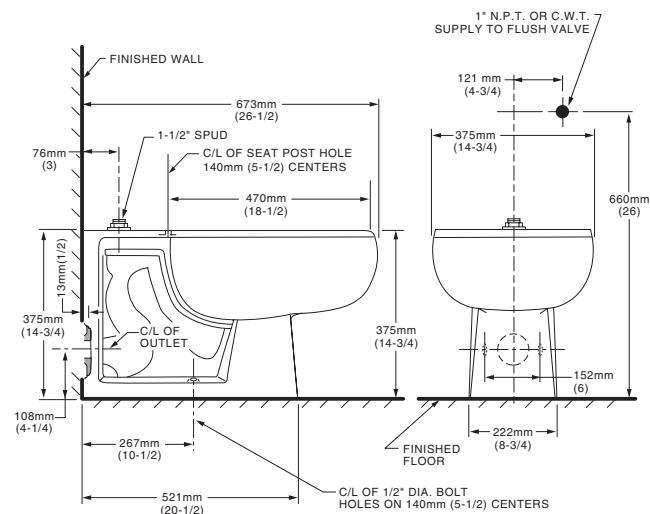
SEE REVERSE FOR ROUGHING-IN DIMENSIONS

To Be Specified:

- ☐ Color: ☐ White
- ☐ Seat: Olsonite #95 open front seat less cover
- ☐ Seat: Church #9500C open front seat less cover
- ☐ Seat: Pressalit seats for American Standard, closed front seat with cover (thermoset compound material).
- ☐ Alternate Seat:
- ☐ Flush Valve:
 - ☐ American Standard Selectronic™ #6065.161.002 DC Power (Top Spud)
 - ☐ American Standard Selectronic™ #6065.262.007 DC Power (Back Spud)
 - ☐ American Standard Selectronic™ #6067.262.007 AC Power (Back Spud)
 - ☐ American Standard Selectronic™ #6068.262.007 Multi AC Power (Back Spud)

2529.016

2530.016



NOTES:

NOTES:
WASTE OUTLET SEAL RING MUST BE NEOPRENE OR GRAPHITE-FELT (WAX RING NOT RECOMMENDED).

TO COMPLY WITH AREA CODE GOVERNING THE HEIGHT OF VACUUM BREAKER ON FLUSH VALVE, THE PLUMBER MUST VERIFY DIMENSIONS SHOWN FOR SUPPLY ROUGHING.

DIMENSIONS SHOWN FOR SOFT-LET HOODING.
FLUSH VALVE NOT INCLUDED AND MUST BE ORDERED SEPARATELY.

IMPORTANT: Dimensions of fixtures are nominal and may vary within the range of tolerances established by ANSI Standard A112.19.2. These measurements are subject to change or cancellation. No responsibility is assumed for use of superseded or voided pages.