

MADERA™ ELONGATED 10" ROUGH

- Flush valve toilet
- Vitreous china
- Low-consumption (6.0 Lpf/1.6 gpf)
- 10" roughing-in
- Elongated bowl
- Direct-fed siphon jet action
- Fully glazed 2-1/8" trapway
- 11" x 13" water surface area
- 1-1/2" top spud
- 2 bolt caps
- 100% factory flush tested

2234.015 Elongated bowl only, top spud

Component Parts:

- 047007-0070A** Inlet spud (furnished with bowl)
- 481310-100** Bolt caps with retainers (furnished with bowl)



Nominal Dimensions:

768 x 381 x 359mm
(30-1/4" x 15" x 14-1/8")

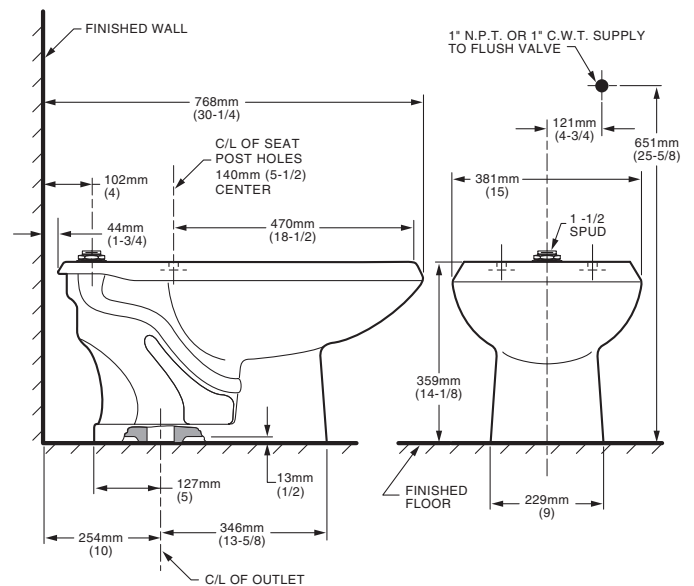
Recommended working pressure – between
25 psi at valve when flushing and 80 psi static

Fixture only, less seat, bolt caps and flush valve

Compliance Certifications -

Meets or Exceeds the Following Specifications:

- ASME A112.19.2 for Vitreous China Fixtures



To Be Specified:

- Color: White Bone Silver Linen
- Seat: 5901.100 American Standard Seat
- 5901.110 American Standard Seat with EverClean®
- Alternate Seat: 5905.100 Heavy Duty American Standard Seat
- 5905.110 Heavy Duty American Standard Seat with EverClean
- Flush Valve:
 - American Standard Selectronic™ #6065.161.002 DC Power (Top Spud)

NOTES:

PRODUCT 2234.015 SHOWN.
TO COMPLY WITH AREA CODE GOVERNING THE HEIGHT OF VACUUM BREAKER ON FLUSH VALVE, THE PLUMBER MUST VERIFY DIMENSIONS SHOWN FOR SUPPLY ROUGHING.
FLUSH VALVE NOT INCLUDED AND MUST BE ORDERED SEPARATELY.
THIS TOILET IS DESIGNED TO ROUGH-IN AT A MINIMUM DIMENSION OF 254MM (10") FROM FINISHED WALL TO C/L OF OUTLET.

IMPORTANT: Dimensions of fixtures are nominal and may vary within the range of tolerances established by ANSI Standard A112.19.2. These measurements are subject to change or cancellation. No responsibility is assumed for use of superseded or voided pages.