

COMRADE™ WALL-HUNG LAVATORY

- Wall-hung sink
- Vitreous china
- Rear overflow
- Soap depression
- Faucet ledge (faucet not included)

0124.024 With wall hanger (Illustrated)
Faucet holes on 102mm (4") centers

0124.131 For concealed arms support
Faucet holes on 102mm (4") centers

Nominal Dimensions:

508 x 464mm
(20" x 18-1/4")

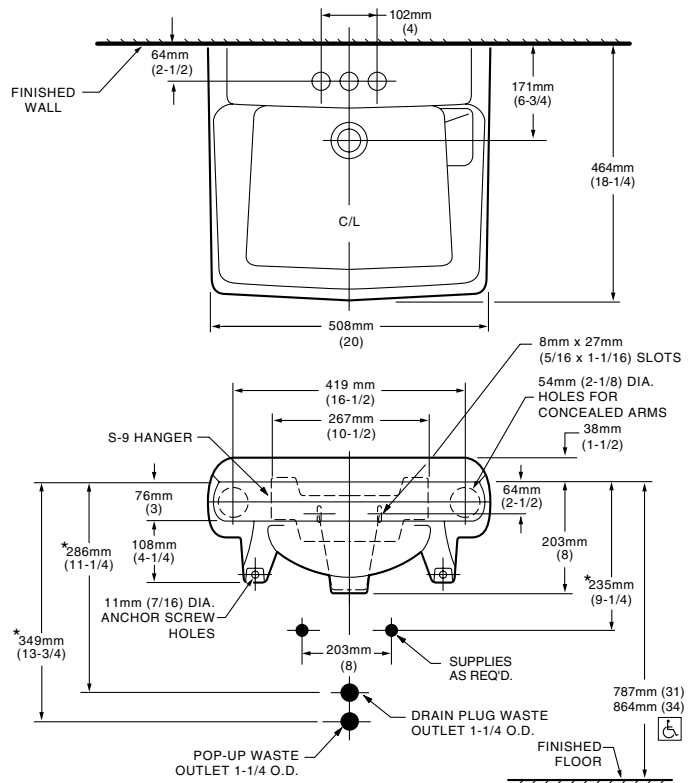
Bowl sizes:

381mm (15") wide
276mm (10-7/8") front to back
159mm (6-1/4") deep

Compliance Certifications -

Meets or Exceeds the Following Specifications:

- ASME A112.19.2 for Vitreous China Fixtures



To Be Specified:

- Color: White Bone Silver
- Faucet*:
- Faucet Finish:
- Supplies:
- 1-1/4" Trap:
- Nipple:
- Concealed Arms Support (by others):

* See faucet section for additional models available



MEETS THE AMERICANS WITH DISABILITIES ACT GUIDELINES AND ANSI A117.1 ACCESSIBLE AND USABLE BUILDINGS AND FACILITIES - CHECK LOCAL CODES.
Top of front rim mounted 864mm (34") from finished floor.

NOTES:

* DIMENSIONS SHOWN FOR LOCATION OF SUPPLIES AND "P" TRAP ARE SUGGESTED.
PROVIDE SUITABLE REINFORCEMENT FOR ALL WALL SUPPORTS.
FITTINGS NOT INCLUDED AND MUST BE ORDERED SEPARATELY.

IMPORTANT: Dimensions of fixtures are nominal and may vary within the range of tolerances established by ANSI Standard A112.19.2. These measurements are subject to change or cancellation. No responsibility is assumed for use of superseded or voided pages.