

CHINALUX™

BY

American Standard



Two-Piece Toilets

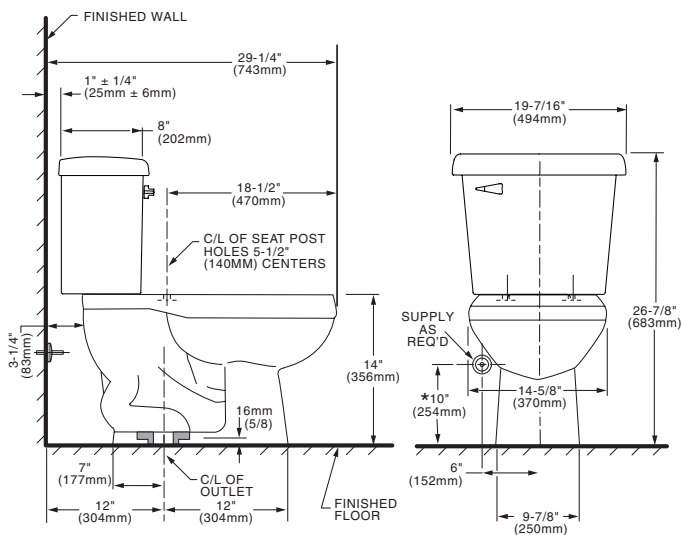
ELONGATED FRONT TOILET

Models 1000EL.WHT and 1000EL.BON

- Bowl – White 1100EL.WHT
- Bowl – Bone 1100EL.BON
- Tank – White 120012.WHT
- Tank – Bone 120012.BON

Nominal Dimensions:

29-1/4" x 19-7/16" x 26-7/8"
(743 x 494 x 683mm)



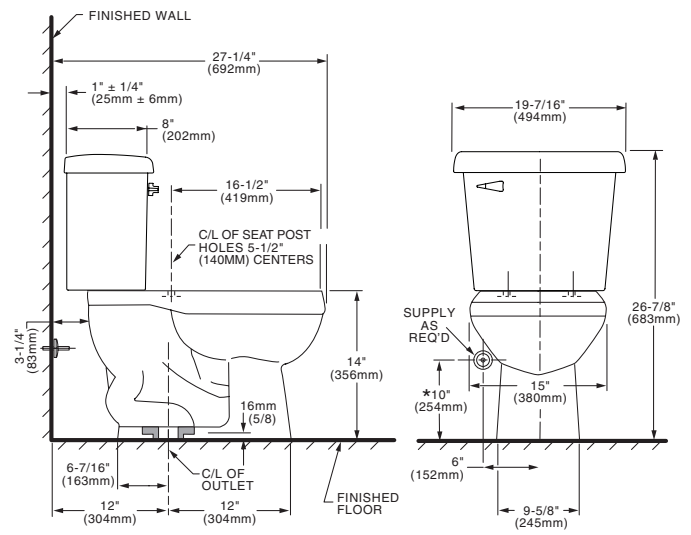
ROUND FRONT TOILET

Models 1000RF.WHT and 1000RF.BON

- Bowl – White 1100RF.WHT
- Bowl – Bone 1100RF.BON
- Tank – White 120012.WHT
- Tank – Bone 120012.BON

Nominal Dimensions:

27-1/4" x 19-7/16" x 26-7/8"
(692 x 494 x 683mm)



- Close-coupled, two-piece toilet
- Fixture only, seat and supply by others
- Vitreous china
- 1.6 gallons (6 liters) of water per flush
- 12" (305mm) rough-in
- Available in Elongated and Round Front
- Siphon vortex bowl
- 14" (356mm) rim height
- Fully glazed 2" trapway
- 9" x 8-3/4" water surface area
- Two color-matched bowl caps
- One year limited warranty

To Be Specified:

Color: White Bone
 Supply with stop: _____

Compliance Certifications –

Meets or Exceeds the Following Specifications:

- ASME A112.19.2M for Vitreous China Fixtures – includes Flush Performance, Ball Pass Diameter, Trap Seal Depth and all Dimensions

NOTES:

THIS COMBINATION IS DESIGNED TO ROUGH-IN AT A MINIMUM DIMENSION OF 305MM (12") FROM FINISHED WALL TO C/L OF OUTLET.

* DIMENSION SHOWN FOR LOCATION OF SUPPLY IS SUGGESTED. SUPPLY NOT INCLUDED WITH FIXTURE AND MUST BE ORDERED SEPARATELY.

IMPORTANT: Dimensions of fixtures are nominal and may vary within the range of tolerance established by ANSI Standard A112.19.2. These measurements are subject to change or cancellation. No responsibility is assumed for use of superseded or voided pages.