

CHAMPION® SELECT ELONGATED TOILET

2087.212

- Vitreous china
- EverClean™ anti-microbial glaze (available Summer 2006)
- Low-consumption (6.0 Lpf/1.6 gpf)
- Features **Champion® Flushing System** performance platform
- 3" non-adjustable, flapper-free flush valve
- Elongated siphon action jetted bowl
- 2-3/8" fully-glazed trapway
- Speed Connect™ tank/bowl coupling system
- Trip lever color-matched to toilet
- Sweeping pier on bowl
- 100% factory flush tested
- 2 bolt caps
- 10 year warranty



3121.016 Elongated Bowl

4272.216 Tank

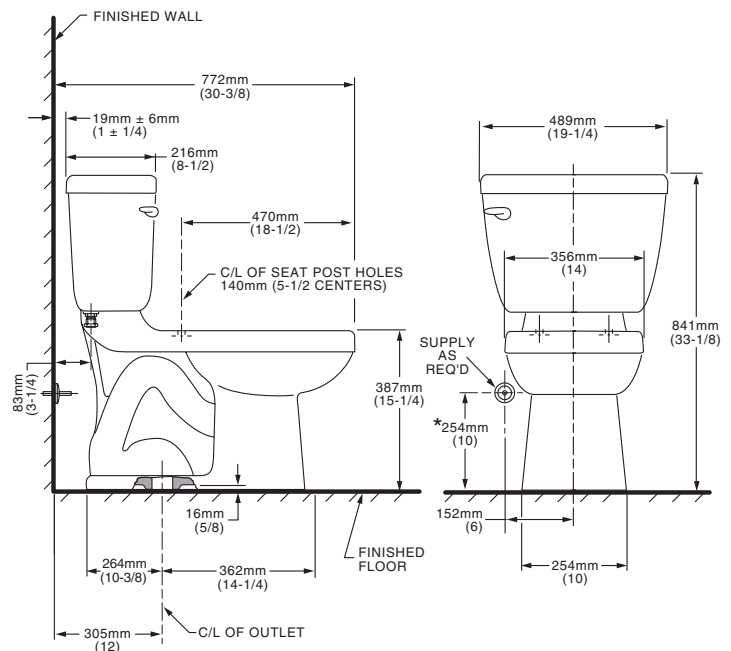
Nominal Dimensions:

772 x 489 x 841mm
(30-3/8" x 19-1/4" x 33-1/8")

Fixture only, seat and supply by others

**Compliance Certifications -
Meets or Exceeds the Following Specifications:**

- ASME A112.19.2M for Vitreous China Fixtures - includes Flush Performance, Ball Pass Diameter, Trap Seal Depth and all Dimensions
- Los Angeles Department of Water and Power Supplementary Purchase Specification for Non-Adjustability - July, 2003 revision



NOTES:

THIS TOILET IS DESIGNED TO ROUGH-IN AT A MINIMUM DIMENSION OF 305MM (12") FROM FINISHED WALL TO C/L OF OUTLET. SUPPLY NOT INCLUDED WITH FIXTURE AND MUST BE ORDERED SEPARATELY.

* DIMENSION SHOWN FOR LOCATION OF SUPPLY IS SUGGESTED.

IMPORTANT: Dimensions of fixtures are nominal and may vary within the range of tolerances established by ANSI Standard A112.19.2. These measurements are subject to change or cancellation. No responsibility is assumed for use of superseded or voided pages.

To Be Specified:

- Color:
 - White
 - Bone
 - Silver
 - Linen
 - Black
- Seat: (please specify color)
 - Champion® Slow Close Elongated #5325.010
 - Rise & Shine Elongated #5324.019
 - Laurel Elongated #5311.012
- Supply with stop:

