

**MODEL NUMBER:**

- **AC POWERED; single inlet**
  - 6058.105 with cast spout, 0.5 GPM pressure compensating, vandal-resistant spray. Includes AC power supply.
  - 6058.102 with cast spout, 1.5 GPM pressure compensating, vandal-resistant aerator. Includes AC power supply.
- **OPTIONAL 4" or 8" Deck plates**
  - 605P.400 4" brass deck plate with 1/4" fixation studs and quick spin nuts. (6-1/8" x 2-1/8" x 1/2")
  - 605P.800 8" brass deck plate with 1/4" fixation studs and quick spin nuts. (10-1/8" x 2-3/8" x 1/2")

**GENERAL DESCRIPTION:**

Electronic faucet with proximity operation. Colored LED's signal temperature change mode. Vandal-resistant solid brass construction single post mounting. Operates on AC permanent power. Water pressure range from 20 to 125 psi. Dual inlets, built-in checks, and flexible stainless steel 20" reach inlet hoses for connection.

**PRODUCT FEATURES:**

**Vandal-Resistant Brass Body:** Durable - Excellent in high use applications.

**Power Options:**

- **Plug-In - Integral** low voltage transformer (115 VAC supply) with 6 foot long power supply.

**Easy and Flexible Installation:**

Single post mounting with optional 4" and 8" Deck plate. Water resistant solenoid enclosure mounts to wall.

**Integrated; Easy Service Strainer:**

Patented integrated strainer enclosed in removable debris cup protects the solenoid valve and aerator from debris. Perforated stainless steel strainer is low maintenance and can be easily accessed.

**Temperature Mixing:**

The water temperature gradually decreases/increases to a desired setting through a cyclic mixing valve. After usage, the faucet reverts back to a pre-setting temperature.

**End Device:**

Choice of 1.5 GPM (5.7 L/min) pressure compensating, vandal-resistant aerator or 0.5 GPM (1.9 L/min) pressure compensating, vandal-resistant spray.

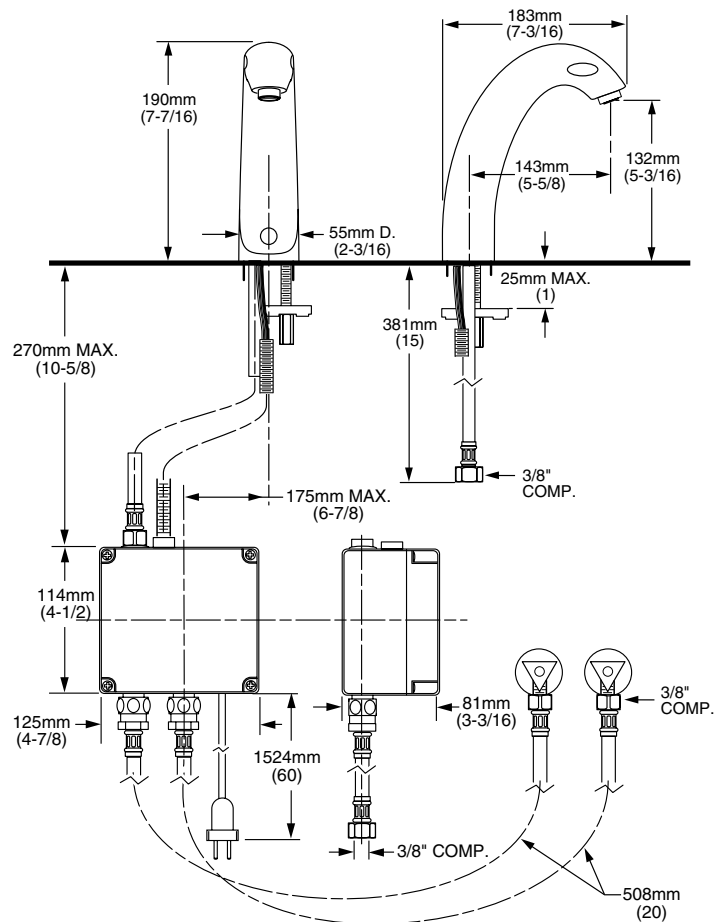
**CODES AND STANDARDS:**

These products meet or exceed the following codes & standards:

- ANSI A117.1
- ASME A112.18.1
- CSA B 125



**ADA Compliant**



**RECOMMENDED SPECIFICATION**

Electronic Proximity Lavatory shall feature touch-free temperature control, vandal resistant all brass body with single inlet, built-in check valve, and in-line strainer. Shall also feature a low energy use electronically operated solenoid valve and microprocessor controlled proximity sensors. Shall meet ANSI A112.18.1M and ANSI 117.1 codes. Fitting shall be American Standard Model # 6058.\_\_\_\_\_.