

CADET™ SPECIFIER ROUND FRONT TOILET

2783.012

- Vitreous china
- Low-consumption (6.0 Lpf/1.6 gpf)
- Round front siphon action jetted bowl
- Fully glazed 2" **Ballpass** trapway
- Fluidmaster Fill Valve
- Large 11" x 9" water surface area
- Close-coupled tank
- Color-matched trip lever
- Sanitary bar on bowl
- 2 bolt caps
- 100% factory flush tested

3454.016 Bowl

4392.001SMT Tank

Nominal Dimensions:

699 x 508 x 737mm

(27-1/2" x 20" x 29")

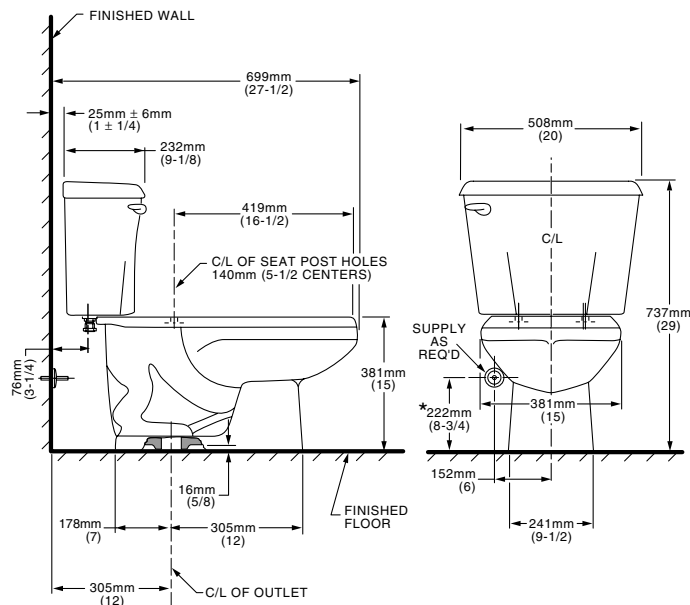
Fixture only, seat and supply by others

Alternate Tank Configurations Available:

- 4392.800SMT** Tank complete with Trip Lever Located on Right Side

To Be Specified

- ☐ Color:
- ☐ Seat: American Standard #5322.011 "Rise and Shine" (with easy to clean lift-off hinge system) solid plastic closed front seat with cover. See pageTB-001.
- ☐ Seat: American Standard #5308.014 "Laurel" molded closed front seat with cover. See pageTB-001.
- ☐ Alternate Seat:
- ☐ Supply with stop:



**Compliance Certifications -
Meets or Exceeds the Following Specifications:**

- ASME A112.19.2M (and 19.6M) for Vitreous China Fixtures - includes Flush Performance, Ball Pass Diameter, Trap Seal Depth and all Dimensions

NOTES:

THIS COMBINATION IS DESIGNED TO ROUGH-IN AT A MINIMUM DIMENSION OF 305MM (12") FROM FINISHED WALL TO C/L OF OUTLET.

* DIMENSION SHOWN FOR LOCATION OF SUPPLY IS SUGGESTED.

SUPPLY NOT INCLUDED WITH FIXTURE AND MUST BE ORDERED SEPARATELY.

IMPORTANT: Dimensions of fixtures are nominal and may vary within the range of tolerance established by ANSI Standard A112.19.2

These measurements are subject to change or cancellation. No responsibility is assumed for use of superseded or voided pages.