

DESCRIPTION

The Fail-Safe CFS Series is designed for use in non-laminar air flow clean rooms. This surface mounted clean room luminaire has a hole-free design and is enclosed and gasketed to protect against infiltration of particles and airborne bacteria. The sealed housing and door frame allow relamping without contamination of the clean areas. These luminaires are U.L. listed and C.S.A. certified for wet locations and are manufactured in accordance with U.S.D.A., F.D.A., N.S.F. and Federal Standard 209E. 200 PSI hosedown rating is standard.

Catalog #	Type
Project	
Comments	Date
Prepared by	

SPECIFICATION FEATURES

Application

The CFS Series is suitable for use in I.E.S. Class 100, 1,000, 10,000 and 100,000 clean room environments. Applications include clean rooms, technical and biomedical labs, food processing/testing centers and pharmaceutical labs. Manufactured to IP65 Rating.

A ... Lens

Lens is clear extruded with prisms positioned inside fixture and smooth surface on the outside for easy cleaning.

B ... Fasteners

Flush mounted, stainless steel machine screws secure through captive cage nuts in housing and are evenly spaced to compress gasketing on all sides.

C ... Housing

Die-formed, 20 ga. CRS with tightly butted and seam welded, sealed end caps. Contains no holes that would allow air passage.

Housing - (Cont.)

Standard white high reflectance polyester powder coat finish. Gloss: 85%; Reflectance: 93%; Hardness: 2H; Salt Spray: 500 Hours.

D ... Lamps

(By Others)

E ... Lens Retention

Unique, Particlock(TM) lens retention system utilizes continuous, 18 ga. media clampdowns to sandwich gasketing and integrate lens and door frame for even environmental seal.

F ... Hinge

Two braided, stainless steel cables on one side of door provide hinging.

G ... Door

One piece, 18 ga. door with baked white polyester powder coat, fully gasketed, outside door with die-

Door - (Cont.)

formed and beveled edges eliminates seams which could entrap microscopic contaminants. Optional doors available.

H ... Ballast

Standard, Class P, CBM/ETL ballast.

I ... Gasket

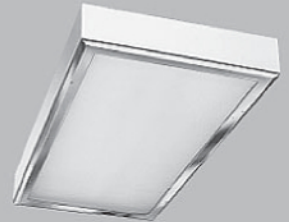
White, closed cell, Flexiseal(TM) gasketing surrounds perimeter of lens to seal lens to door frame and around perimeter of door to seal door to housing.

J ... Access

A gasketed access plate inside the housing with two flattened, 7/8" diameter knockouts allows connection of vapor tight conduit fitting.

Labels

U.L. listed, C.S.A. certified, standard wet label. 200 PSI hosedown rating is standard.



CFS24LP

28W - 216W

Fluorescent

2' X 2'

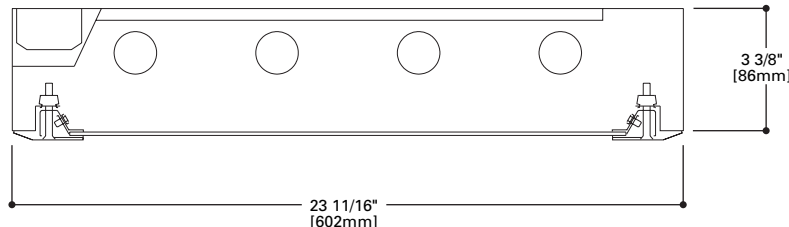
2' X 4'

FLUORESCENT SURFACE

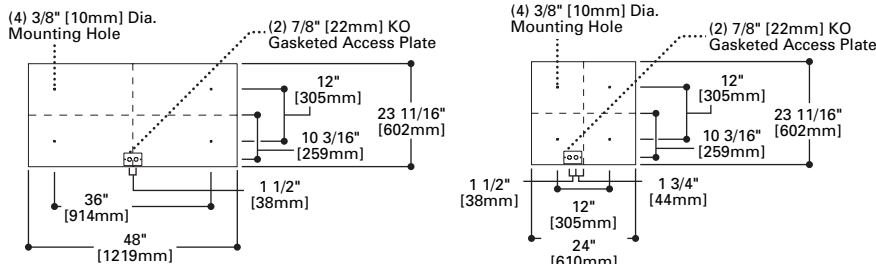
ONE-PIECE DOOR

T5 LAMP TECHNOLOGY

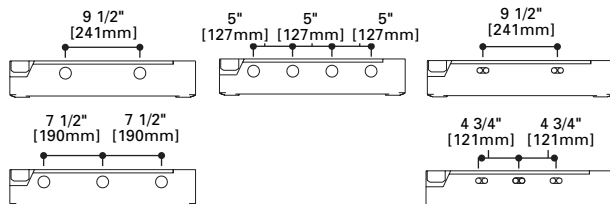
T8 LAMP TECHNOLOGY



MOUNTING DIMENSIONS

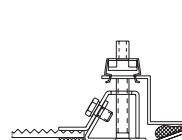


LAMP CONFIGURATIONS



DOOR FRAME

Surface Type-One-piece Door



ENERGY DATA

Input Watts:

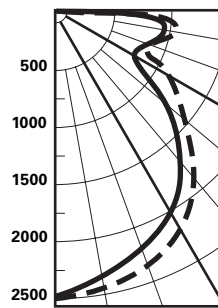
Electronic Ballasts & STD Lamps
(2) 40W Biaxial Fluorescents: 68W
(3) 40W Biaxial Fluorescents: 101W

Electronic Ballasts & STD Lamps
(2) 17W T8 Fluorescents: 34W
(3) 17W T8 Fluorescents: 47W
(4) 17W T8 Fluorescents: 61W
(2) 32W T8 Fluorescents: 58W
(3) 32W T8 Fluorescents: 85W
(4) 32W T8 Fluorescents: 112W

Electronic Ballasts & STD Lamps
(2) 14W T5 Fluorescents: 35W
(3) 14W T5 Fluorescents: 55W
(4) 14W T5 Fluorescents: 70W
(2) 28W T5 Fluorescents: 63W
(3) 28W T5 Fluorescents: 97W
(4) 28W T5 Fluorescents: 126W

For High Output Electronic Ballast
Data Consult Cooper Lighting
Representative.

Candlepower Distribution



Test No. ITL36036
CFS-24-440-1K12
 Lamp=(4) 40WT12
 Lumens=8526
 Spacing Criteria
 $\perp=1.4$ $\parallel=1.2$
 Efficiency=67.7%

\perp
 \parallel

Average Luminance

Deg.	\perp	\parallel
45	1595	1323
55	1154	980
65	822	779
75	871	857
85	1018	933

Zonal Lumen Summary

Zone	Lumens	%Lamp	%Luminaire
0-30	2728	21.7	32.0
0-40	4499	35.7	52.8
0-60	7316	58.1	85.8
0-90	8526	67.7	100.0
90-180	0	0.0	0.0
0-180	8526	67.7	100.0

Coefficient of Utilization

rc	80%				70%			50%		30%		10%		0%
rw	70	50	30	10	50	30	10	50	10	50	10	50	10	0
RCR														
0	81	81	81	81	79	79	79	75	75	72	72	69	69	68
1	75	72	69	67	70	68	66	67	64	65	62	62	60	59
2	69	64	60	57	63	59	56	61	55	58	54	56	52	51
3	64	58	53	49	57	52	48	55	48	53	47	51	46	45
4	59	52	46	42	51	46	42	49	42	48	41	46	40	39
5	54	46	41	37	46	40	36	44	36	43	36	42	35	34
6	50	42	36	32	41	36	32	40	32	39	31	38	31	30
7	46	38	32	28	37	32	28	36	28	35	28	34	28	26
8	43	34	28	25	33	28	24	33	24	32	24	31	24	23
9	39	30	25	21	30	25	21	29	21	29	21	28	21	20
10	37	28	22	19	27	22	19	27	19	26	19	25	19	17

rc=Ceiling reflectance, rw=Wall reflectance, RCR=Room cavity ratio

CU Data Based on 20% Effective Floor Cavity Reflectance.

ORDERING INFORMATION

SAMPLE NUMBER: CFS24LP-432-120-IP12-EB82

Product Family	Lamp Type	Voltage	Lens Type	Ballast	Door/Finish Options	Options
CFS24LP						
CFS24LP=Fluorescent Surface Type	2' Nominal Length T5 Fluorescents 214=(2) 14W Lamps 314=(3) 14W Lamps 414=(4) 14W Lamps 224=(2) 24W HO Lamps 324=(3) 24W HO Lamps 424=(4) 24W HO Lamps T8 Fluorescents 217=(2) 14W Lamps 317=(3) 14W Lamps 417=(4) 14W Lamps 2U6T8=(2) 32W Lamps 2U15/8=(2) 31W Lamps 3U15/8=(3) 31W Lamps Biaxial Fluorescents 140BX=(1) 40W Lamp 240BX=(2) 40W Lamps 340BX=(3) 40W Lamps 4' Nominal Length T5 Fluorescents 128=(1) 28W Lamps 228=(2) 28W Lamps 328=(3) 28W Lamps 428=(4) 28W Lamps 154=(1) 54W Lamps 254=(2) 54W HO Lamps 354=(3) 54W HO Lamps 454=(4) 54W HO Lamps T8 Fluorescents 132=(1) 32W Lamps 232=(2) 32W Lamps 332=(3) 32W Lamps 432=(4) 32W Lamps	120=120V 277=277V 347=347V	IK12=K-12 Prismatic Acrylic IP12=K-12 Prismatic Polycarbonate KSH25 ¹ =Bat Wing Distribution 93=Prismatic Tempered Glass	LEOC8 =Energy Saving Ballast for use with T8 Lamp Electronic Ballast¹ EB81 =(1) Ballast for use with T8 lamp EB82 =(2) Ballasts for use with T8 lamps EBX1 =(1) Ballast for use with Biaxial Lamp EBX2 =(2) Ballasts for use with Biaxial Lamps EB51 =(1) Ballast for use with T5 lamp EB52 =(2) Ballasts for use with T5 lamps	Blank =Standard, CRS with baked white finish SSN =Stainless Steel Door/Brushed 304 Finish SSP =Stainless Steel Door/Polyester Powder Coat Finish ALP =Aluminum Door & Trim Polyester Powder Finish ALX =Extruded Aluminum Door & Trim, Clear Anodized Finish ³ ALXP =Extruded Aluminum Door & Trim Polyester Powder Finish ³	EBP =Emergency Battery Pack GLR =Fuse and Holder RIF =Radio Frequency Interference Filter Housing Options SHN =Stainless Steel, Brushed 304 Finish SHP =Stainless Steel, Polyester Powder Finish ALH =Aluminum, Polyester Powder Finish

Notes:

For additional options please consult Cooper Lighting Representative. Specifications and Dimensions subject to change without notice. Electronic ballast may cause interference with other electronic devices. If interference occurs, move the device away from the product or plug/connect into a different circuit/outlet.

¹ The KSH25 provides improved visual performance and wide angle distribution. This lens has an integral prism pattern designed so that prisms face the lamp cavity and still supply superior photometrics. Highly recommended for all high tech manufacturing environments. ² For specific electronic ballast, specify brand and catalog number. ³ Not rated for 200 PSI hose down.