

# Babysense™ II

Infant Respiratory Monitor

## Parents' User Manual

During the first year of life, infants may experience irregular breathing patterns or even stop breathing. Babysense can alert when these signs indicate a cold, high fever, or other illness. In the extreme, breathing cessation can be related to Crib Death (S.I.D.S: Sudden Infant Death Syndrome) still a number one cause of death in infants up to one year of age. The syndrome is impossible to predict and modern medicine has not yet come up with means of cure or solution, thereby **"Babysense II"** is limited as a safeguard. However, it is a unique safety system which has helped save infants, giving parents (or caretaker) assurance, by enabling intervention in the event of irregular beathing movement or distress, before it becomes critical. There are a number of cautionary steps which are internationally recommended for SAFE SLEEPING:

- \* Always lay baby to sleep on back.
- \* Refrain from smoking near or around baby.
- \* Avoid over-heating of baby's surrounding.

**Babysense is an addition to these precautions.**

**"Babysense II"** is a home movement monitor for basically healthy infants, excluding high-risk infants requiring constant medical supervision.

### Main Features

**"Babysense II"** continually detects baby's motion and breathing movements, and will set off a sound and visual alarm if movement stops for 20 seconds or if the breathing rate slows to below 10 breaths per minute. The system's non-touch sensor pads under the mattress monitor baby's movement without restraining him.

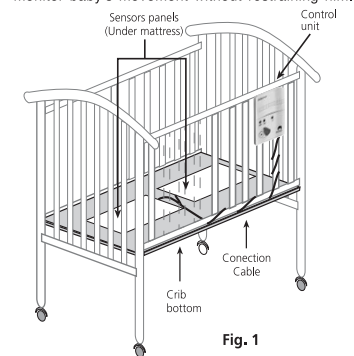


Fig. 1

### Installation

1. Place the two sensor pads on the bottom of the bed (see illustration 1), or one sensor pad (see note below on newborns). Place mattress firmly on top of sensor pads. If the mattress cannot be in contact with the sensor pads, or if the mattress is on springs, it will be necessary to place a wooden board on the bed base on which to place the sensor pads, and then the mattress on top.

2. Remove battery cover (see illustration 3), remove battery housing and insert, in accordance with the markings, 4 new and identical size AA 1.5 volt batteries, preferably alkaline. Replace battery housing and close cover.

3. Attach cords of the two sensor pads to the double-connector of the connecting cable. Attach end of connecting cable to the outlet marked "SENSOR-IN" on the control unit.

When using a single sensor pad, attach cord directly to the "SENSOR-IN" outlet without using the connecting cable.

**IMPORTANT:** To avoid possible danger from dangling sensor cords, it is recommended to collect excess cord length with the included tie, or wrap excess cord length carefully around bed posts, as shown in illustration 1.

4. Press hanging hook firmly into slot in back of control unit (see illustration 3), and hang from the edge of the bed, or anywhere out of baby's reach.

### Note on installation for newborns

(until beginning to crawl)

**When using for infant not yet able to crawl, use only one sensor pad – without the connecting cable.** This will ensure greater relative sensitivity. When baby begins to move around, moving onto area not "covered" by the sensor pad, the second pad must be attached, using the connecting cable.

### Contents

Monitoring Control Unit, hanging hook, 2 sensor pads and connecting cable

### Operation

See illustration 2 for layout of control unit featuring:

- On/off button under protective cover
- Motion-activated green light
- Red alarm light, activate if baby's breathing stops or slows significantly.
- Low battery warning light

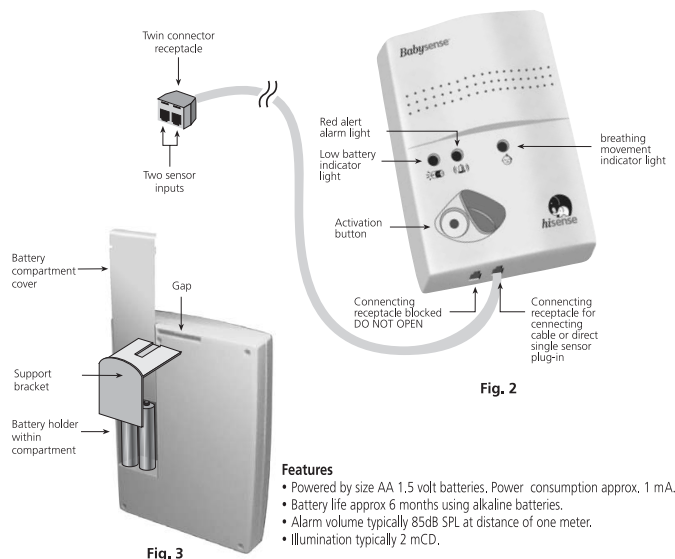


Fig. 2

### Features

- Powered by size AA 1.5 volt batteries. Power consumption approx. 1 mA.
- Battery life approx 6 months using alkaline batteries.
- Alarm volume typically 85dB SPL at distance of one meter.
- Illumination typically 2 mCD.

## WARNING

Babysense is a high quality, high sensitivity electronic device which must be handled with care:

- Do not handle roughly, drop or throw it.
- Follow the installation instructions carefully to ensure that it is installed securely and correctly.
- Babysense is not a toy: Do not allow children of any age to play with it.

To operate, press on/off button. When switched on, the control lights switch on briefly and a click will be heard. When breathing and movement are sensed, the green light flashes. If red low-battery warning light flashes (see illustration 2), replace batteries as soon as possible. If in addition clicking is heard, batteries must be replaced immediately. Turn off by pressing on/off button.

### Testing Operation

**"Babysense II"** is an exceedingly sensitive device which monitors baby's breathing movements through the mattress during sleep. There are two main malfunction causes – technical malfunctions and malfunctions due to environmental causes:

### Technical malfunction:

In order to minimize technical problems, follow installation and operation instructions carefully.

### Environmentally caused malfunction:

Due to the extreme sensitivity of **"Babysense II"**, it can be influenced by fans, wind, air conditioning, and so forth. Such environmental effects could be picked up by the sensors on a similar level to that of breathing movements, thus preventing or delaying alarm activation.

### Conduct this PERFORMANCE TEST regularly:

- Check that when baby is in the bed, the green light flashes.
- Remove baby from bed and turn off device. After turning off, wait 2-3 minutes while the mattress shifts due to removal of the baby's weight.
- Turn device back on without moving the bed (without baby in bed).
- Watch for green light – blinking will indicate that environmental disturbances are being read as false movement recordings.
- Ensure that alarm goes off after 20 seconds (due to absence of breathing movements). The alarm may sound in less than 20 seconds, and can be with or without preliminary ticking.
- Check that alarm can be heard in all likely locations for listener.
- Performance test should be conducted daily.

### Locating and dealing with environmental disturbances:

If the alarm does not sound after 20 seconds, eliminate all environmental disturbances by such actions as changing ventilation, removing mobiles, closing windows, repositioning bed and the like.

Do not put any additional baby or pet in the bed. Babysense **cannot** be used for two twins in one bed. Do not operate vaporizer or ventilator directly towards the bed.

**It is recommended to replace sensors before use for the next baby.**

V.05 01.01.07

### In the event of alarm

Act immediately according to the following:

1. Approach the bed and check that baby is breathing. Note pallor (color of skin), muscle tone and movement.
2. If baby seems not normal, lift baby out of bed and pat on back or shoulders. Check that there is no cause for choking, such as an object lodged in baby's throat. When breathing resumes, consult a doctor.
3. If breathing does not resume, apply first aid (according to the included resuscitation card) and seek medical assistance.

### False alarms:

Isolated cases of false alarms are possible. Check if caused by faulty connection of the sensor pad(s) to the control unit, connection of only one pad when baby can move off the immediate area, or failure of the sensor pads to be directly against the mattress. A mattress of a stiff material such as polyesterene foam could cause false alarms. It has been noted that false alarms resulting from slow breathing rate occur with one in about 200 babies.

Please contact your nearest BABYSENSE representative with any questions or requests.

### Please note:

**"Babysense II" monitors and alerts, but cannot prevent cessation of breathing. The responsibility for applying first aid rests on you.**

**"Babysense II"** senses breathing movements and motion only, and cannot monitor other occurrences. The purpose of the device is to alert when stopping or slowing of breathing and movement occur, which could be associated with common occurrences or even with S.I.D.S. caused by APNEA (central nervous system failure) or any other cause.

### Caring for your "Babysense II"

**"Babysense II"** requires no special treatment beyond replacing batteries when the battery indicator light goes on. The sensor pads and remote unit may be wiped with a damp cloth. Batteries should be removed and the device stored in a dry shaded place when not in use.

Made by HISENSE Ltd.  
10, Shmotkin St. Rishon le Zion, Israel 75363  
www.babysense.net

**European Authorized Representative**  
OBELIS s.a. e-mail: mail@obelis.net  
Av de Tervuren 34 bte 44 B-1040 Bruxelles, Belgium  
Tel 02-732 59 54 fax 02-732 60 03

