



Helpful Information About Your FM Edge

EDGE

Your FM Edge antenna is a quality indoor FM antenna which uses Gamma Loop™ technology to receive FM broadcasts with the least amount of noise possible.

Remember that no antenna can receive a radio signal that isn't there. When a usable radio signal is present, your FM Edge will improve FM reception.

Note: Generally, a practical limit to radio reception is 40-50 miles from the broadcast transmitter depending on the terrain.

Gain Control Knob:

Located on the side of the FM Edge is the gain control knob. The gain control is the mechanism that either increases or decreases the antenna's amplifier intensity. The further away you are from the radio signal, the more you increase the gain. If you are very close to the radio signal, lowering the gain may have a greater effect.

See Fig. 3.

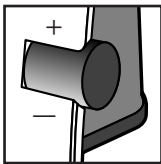


Fig. 3

4

Limited Warranty

Audiovox Corporation (Audiovox) warrants this product against defects in materials or workmanship for one (1) year from the date of purchase. During this period, this product will be replaced without charge. This warranty does not cover any damage due to acts of nature, commercial use, accident, misuse, abuse or negligence. This warranty is only valid in the USA. Replacement as provided under this warranty is the exclusive remedy of the consumer.

Audiovox shall not be liable for any incidental or consequential damages for breach of any express or implied warranty on this product, except to the extent that limitations of this sort are prohibited by applicable law.

THERE ARE NO IMPLIED WARRANTIES OF MERCHANTABILITY OR FITNESS FOR A PARTICULAR PURCHASE EXCEPT TO THE EXTENT THAT IMPLIED WARRANTIES OR EITHER SORT ARE REQUIRED BY APPLICABLE LAW, AND IN SUCH CASE, EACH WARRANTY IS LIMITED IN DURATION TO THE ONE YEAR.

Common Questions

- Q:** My TERK antenna does not work with my boom box. What can I do?
- A:** You can only use a TERK antenna on a system where there is an input for an external antenna. Some portable boom box radios do not have such an input.
- Q:** Can I extend the wire on my FM antenna to place it on a window sill or somewhere away from my receiver?
- A:** You can extend the wire with RG-59 cable and a two-way F connector. These items are available at any electronics store.



For customer service and technical information::1.800.290.6650

For Customer Service
Visit Our Website At
www.audiovox.com
Product Information, Photos,
FAQ's, Owner's Manuals

EDGE

OWNER'S MANUAL



FM Edge
Indoor Antenna

TERK
by AUDIOVOX



Making Connections With Your New FM Edge

EDGE

Radio tuners and receivers can have different connections for your new FM Edge antenna. Please find the connection that best matches your tuner or receiver and follow the listed instructions.

FM Connections:

75 Ohm Coaxial:

Your TERK antenna has a Slip-On Coaxial connector on the FM lead. Simply slide the connector onto the coaxial terminal. See Fig. 1.

75 Ohm Push-Button Connection:

If your radio tuner or receiver has push-button terminals for FM, you will need to use the supplied RED 75 Ohm matching transformer. First, slide the RED 75 Ohm matching transformer into the connector on the FM lead of the antenna. Next, slide the RED wire into the terminal marked "FM 75 Ohm". Lastly, connect the BLACK wire into the terminal marked "FM Ground" or "GND". See Fig. 2.

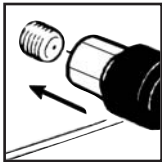


Fig. 1



Fig. 2

1



Power Connection:

Plug the larger end of the power adapter into the “Switched Outlet” of your tuner/receiver or a convenient wall outlet. Plug the smaller end into the input located on the back of the antenna.

Note: When plugging your TERK Power Adapter into a wall outlet, the antenna will remain “ON.” This is not a problem because the AC adapter uses very little power.



Locating Your FM Edge For Best Results

EDGE

1. All antennas are affected by electromagnetic fields. To maximize performance, position your FM Edge antenna away from direct contact with receivers, tuners, CD players, TVs, VCRs and computers. These items, when turned on, emit RF (radio frequencies) which can affect the performance of your FM Edge.
2. Keep the antenna away from large metal objects and off the ground. Near a window is usually a good spot.
3. On rare occasions, certain areas in your home may be null points where no usable signal can be received. This may occur in metal-frame buildings, or houses with aluminum siding. In this case, move your antenna, trying different locations, until the best reception is achieved.

3