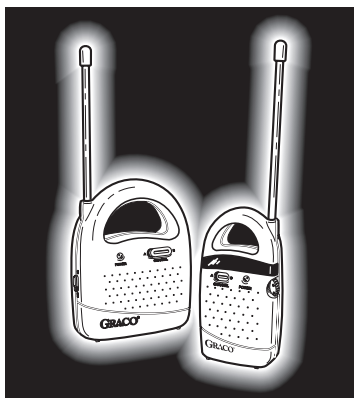


Ultra clear Nursery Monitor

by GRACO®

OWNER'S MANUAL



Model No. M-
Channels C-
Serial No. S-

Dear Customer,
Please fill in the model and serial numbers above from the label inside the battery compartment of your new Nursery Monitor.

*Both Parent's Unit and Nursery Unit **MUST** be set to the same channel for the system to operate.*

Please read this Owner's Manual completely BEFORE first use of your monitor! Pay special attention to the warnings. Keep these instructions for future reference.

Congratulations on your purchase of a Graco® Nursery Monitor!

Graco is the recognized leader in the design and manufacture of quality baby products. We believe your new Graco® Nursery Monitor is a wise choice.

Before using your Nursery Monitor, please take a few minutes to read this Owner's Manual. The short time you spend reading these instructions will help you use your Nursery Monitor properly.

Please save your Owner's Manual for future use.

Customer Satisfaction

Our goal is to make every product the best it can be! We are also committed to supporting our products after purchase. If you would like to speak with Graco about your product, please contact our **Customer Service Department at 1-800-345-4109**. Our knowledgeable staff will be ready to answer any questions you may have concerning parts, use or maintenance. When you call, please have the **model and serial numbers** ready so your call may be processed quickly and efficiently.

⚠ WARNING

This device is designed only to monitor the sounds of your child. **It will not alert you to your child's silent activities.** This product is not designed or intended for use as a medical monitor. Always be sure that both the transmitter and receiver are working properly and are within range of each other.

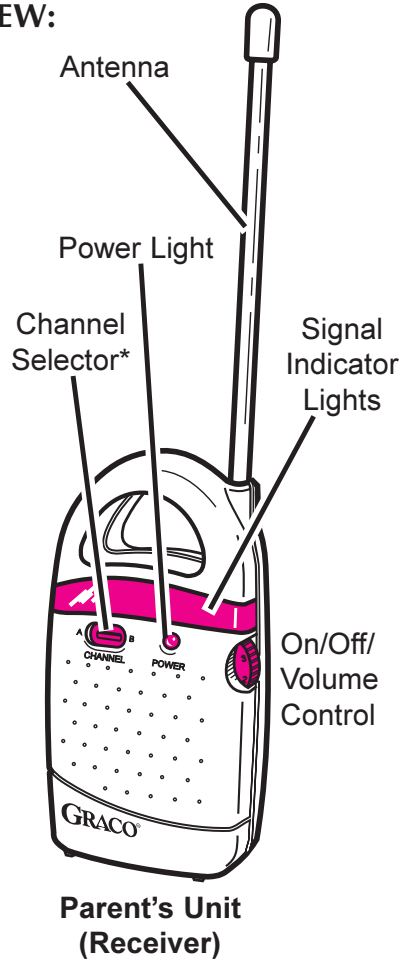
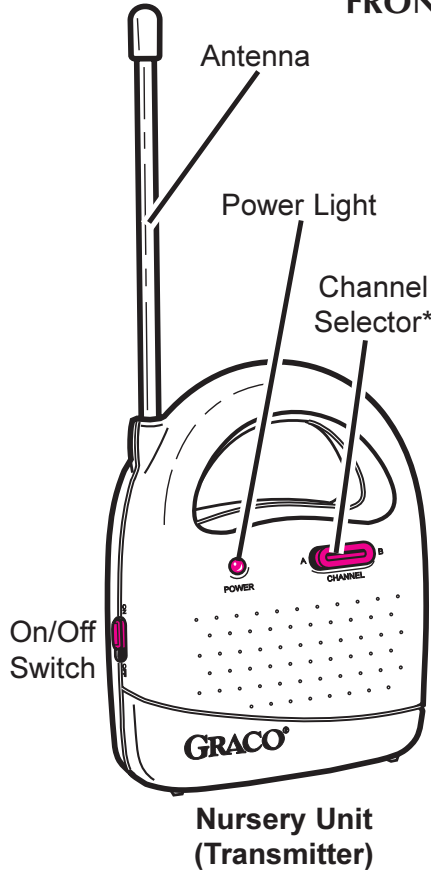
Failure to follow these warnings and the assembly instructions could result in serious injury or death.

- **STRANGULATION HAZARD.** Keep the adapter cords out of the reach of children. Do not use with extension cords.
- **DO NOT place the Nursery Unit or its cord within your child's reach.** Do not put the Nursery Unit inside a crib or playard.
- **DO NOT OPEN THE TRANSMITTER, RECEIVER OR ADAPTER. NO USER-SERVICEABLE PARTS INSIDE. RISK OF ELECTRIC SHOCK, FIRE OR DEATH.**
- **DO NOT immerse any part of the Nursery Monitor in water.** Clean only with a dry cloth.
- **DO NOT place unit near water and moisture.** Do not use the Nursery Unit outdoors. Do not use the monitor near possibly wet areas, such as a bathtub, shower, wash basin, sink, laundry tub, swimming pool, wet basement, etc.
- **Keep Nursery Monitor away from heat sources,** such as fireplaces, radiators, stoves, and TVs or other appliances. Heat can damage the case or electrical parts.
- **Use ONLY with 110-120 volt AC electrical outlets.**
- **Protect the AC adapter cords.** Place them so they are not walked on or pinched by furniture or other items.
- **DO NOT** use the monitor if:
 - The adapter cords or plugs have been damaged.
 - The unit has been exposed to liquids.
 - Unit has been dropped or is damaged inside.
- **Allow for proper ventilation when units are in use.** Do not cover the nursery or parent's unit with any object such as a blanket. Do not place it in a drawer or in any location which would muffle the sound or interfere with the normal flow of air.

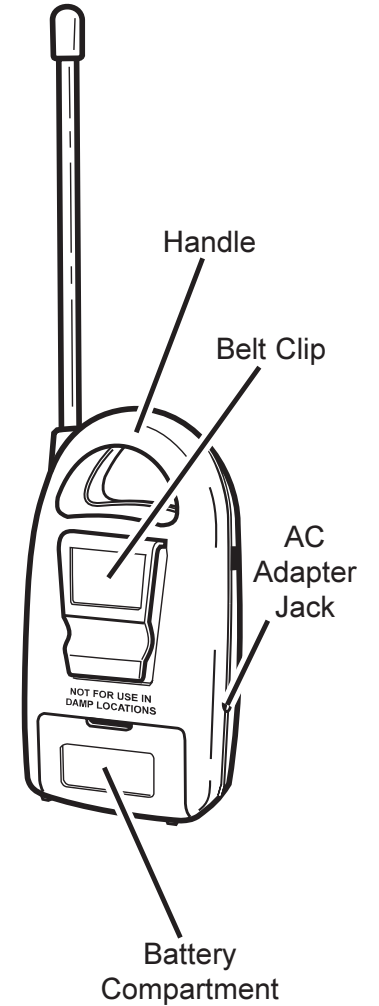
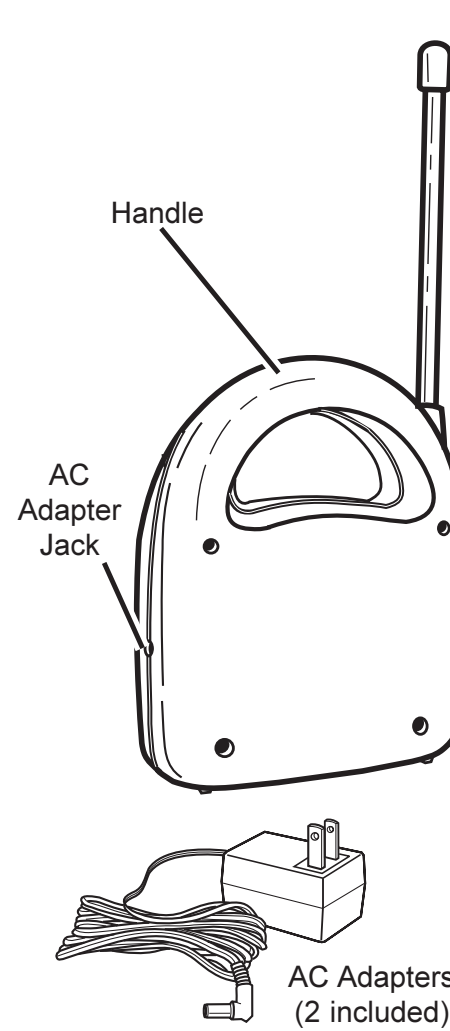
FCC ID# M6Y001010049R
M6Y001010049T

Product Features

FRONT VIEW:



REAR VIEW:



*Both the Parent's Unit and the Nursery Unit **MUST** be set to the same channel. If receiver detects sounds from another nursery monitor or cordless phone, set both units to the other channel. If problem persists, contact Graco.

Installing A Battery

Battery changing should only be done by an adult.

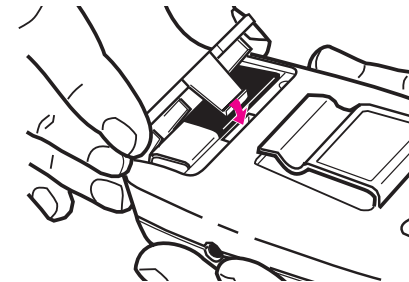
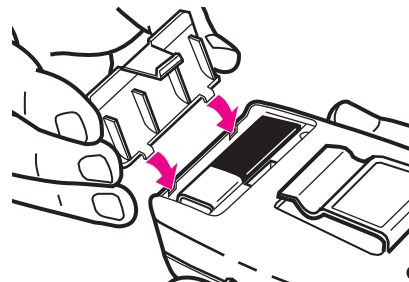
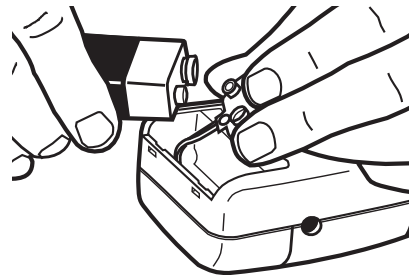
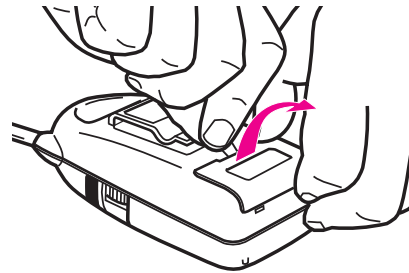
The Parent's Unit can be operated on battery power.

1. Push a screwdriver or similar object into slot at top of the battery cover. Angle tool toward antenna to release battery lid. Remove cover with an upward motion as shown. The cover is designed to open only with a tool so as not to be easily opened by a child.

2. Snap a nine volt battery into proper terminals. An alkaline battery is recommended. Place battery into compartment.

3. Position cover so its two short tabs are **inside** battery compartment, lined up with slots in case.

4. Lower the battery cover into the slot. Snap the cover into place.



BATTERY USE TIPS

Remove battery from Parent's Unit if it will not be used for a long time.

Remove a dead battery promptly. A dead battery left in unit may leak, damaging your unit.

Do not attempt to recharge a non-rechargeable battery.

A rechargeable battery CANNOT be recharged by plugging AC adapter into the Parent's Unit. Remove the battery from unit to recharge it.

Charging of a rechargeable battery should only be done by an adult.

Battery power will be conserved when Parent's Unit is powered through AC adapter. It is not necessary to remove battery when using AC adapter.

Change battery if:

- Signal reception becomes poor
- Indicator lights begin to dim
- Static noise develops (also check for appliance interference)

Using AC Adapters

The Parent's Unit can use either a battery or standard 120 volt AC household current. The Nursery Unit uses standard 120 volt AC household current only. The included AC adapters must be used for this purpose.

To use AC adapters, plug the connector on the cord into the AC adapter jack on the side of the unit. Then plug adapter into a standard wall outlet.

Use ONLY the Graco® adapters included with the unit. Do not use these adapters with other equipment under any circumstances.

If units do not work, check that AC adapters are plugged into working outlets.

When electricity is off (from a power failure, etc.), the transmitter will NOT work, since it **only operates on AC current.**

System Setup

SETTING UP THE MONITOR

1. Check that both Nursery Unit and Parent's Unit are set to the same channel.
2. Discard the decorative sticker on the front of the Parent's unit. Place the Nursery Unit within 10 feet (2-3 meters) of your baby. Plug an AC adapter into the jack on the side of the Nursery Unit. Plug it into a working 120 volt AC outlet.
3. Aim the Nursery Unit toward your baby. Check that there are no walls or large objects that could block sound transmission.
4. Turn on the Nursery Unit using the ON/OFF switch on the left side. The red power light should come on.
5. Install a nine volt battery into the Parent's Unit, or plug it into a working 120 volt AC outlet using the other AC adapter.
6. Turn on the Parent's Unit using the volume control dial on the right side. The red power light should come on.

⚠ WARNING Do not place the Nursery Unit or AC adapter cord within your child's reach. DO NOT place Nursery Unit inside a crib or play yard.

TESTING THE UNITS

It is **VERY IMPORTANT** to test the system when first set up, and at regular times thereafter. Test the units any time they may have been damaged or have not been used for a long time.

1. If two adults are present, have one take the Parent's Unit to different locations, trying various volume settings, while the other speaks into the Nursery Unit.
2. If only one adult is available, place a ticking clock, radio, or other sound-producing device near the Nursery Unit to test it.
3. When testing, keep the level of your child's sounds in mind, and adjust the volume accordingly.
4. If there is sound interference, switch both the Nursery Unit and the Parent's Unit to the other channel setting.

NOTE: As with all radio frequency devices, transmission range and reception may vary. Your Nursery Monitor uses public airwaves, so it is possible for conversations near the Nursery Unit to be broadcast to other nursery monitors, radios, cordless phones or scanners outside your home. For your privacy, always turn off the Nursery Unit when not in use.

This monitor operates on one or more of the following frequencies: 49.830 Mhz, 49.845 Mhz, 49.860 Mhz, 49.875 Mhz, 49.890 Mhz. Maximum signal strength is 10 millivolts/meter at 3 meters.

Solving Problems

Most problems have a simple solution. First, check that:

- Power is turned ON for both units
- Both units are plugged in (or battery is fresh in Parent's Unit)
- Electrical outlet works
- Units are set to same channel
- Volume is turned up on Parent's Unit
- Parent's Unit is in range of the Nursery Unit

If necessary, try the following ideas:

NO SOUND:

Battery dead or weak—replace or use AC adapter.
Channel settings do not match—set both units to same channel.
AC adapter not properly connected—check the connections.
Nursery Unit covered or blocked—remove the obstruction.

WEAK SOUND:

Parent's Unit too far from Nursery Unit—move closer.
Large objects blocking the signal—try repositioning Nursery Unit.
Check that antennas are vertical and are not touched by other objects.
Volume setting too low—turn it up.

STATIC:

Interference from other electrical equipment—eliminate cause of static (TVs, mixers, computers, fans, fluorescent lights, light dimmers, etc.)
Parent's Unit too far from Nursery Unit—move them closer.
Channel settings do not match—set both units to same channel.
Try other channel on both Parent's Unit and Nursery unit.

SHRILL NOISE (FEEDBACK):

Nursery Unit and Parent's Unit too close together—move them farther apart.
Volume set too high—lower the volume.

PARENT'S UNIT DISPLAY LIGHTS STAY ON:

Nursery Unit is off—turn it on, or check AC adapter and power outlet.
Parent's Unit too far from Nursery Unit—move them closer.

If you cannot solve the problem, please contact our **Customer Service Department at 1-800-345-4109.**

Do not attempt to modify the unit. Any modifications to the transmitter and/or receiver can void the operator's authority to operate the equipment.