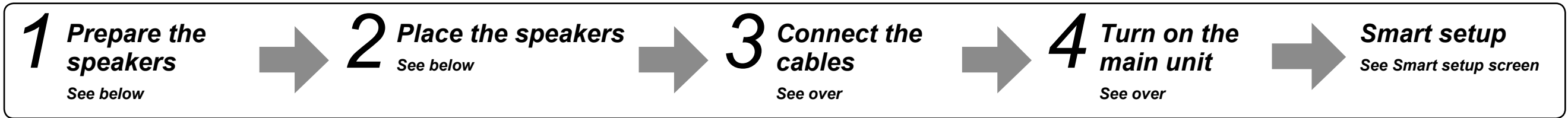


Easy Setting Guide

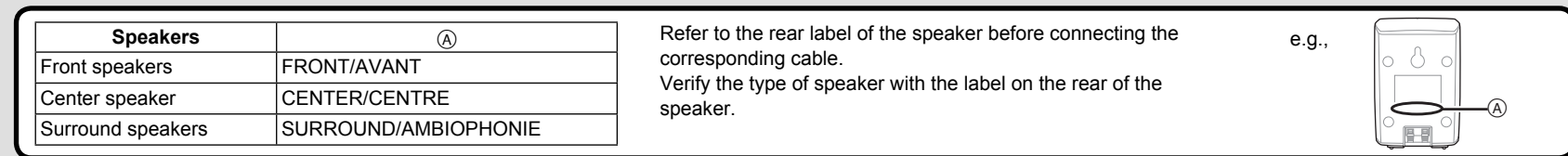
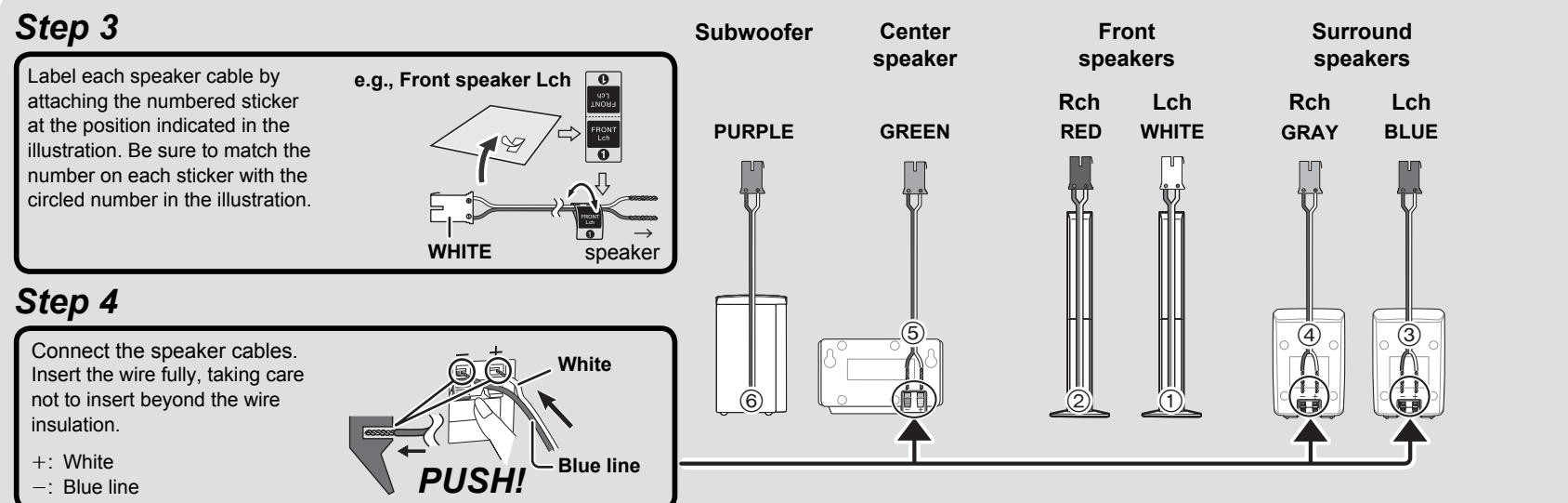
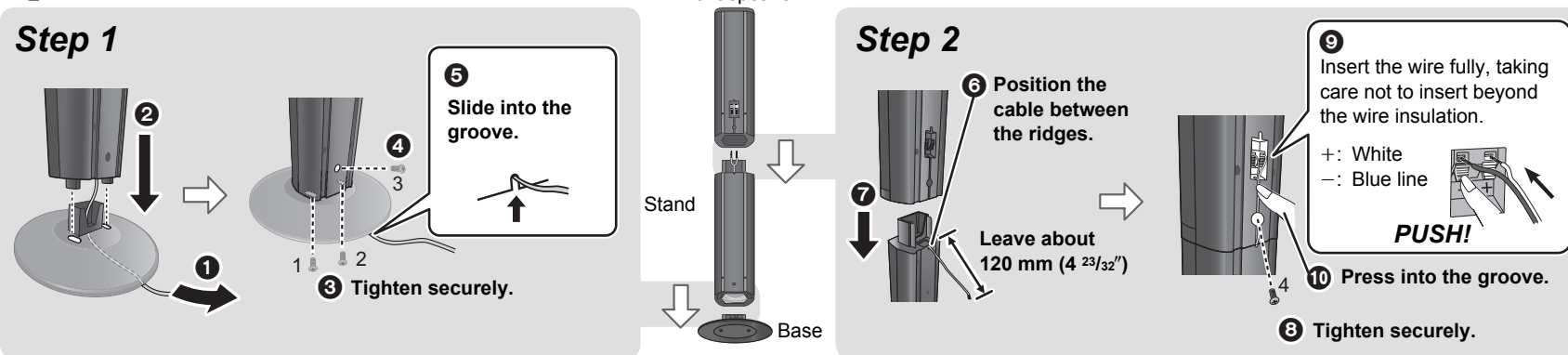
Blu-ray Disc Home Theater Sound System

Model No. **SC-BT330**

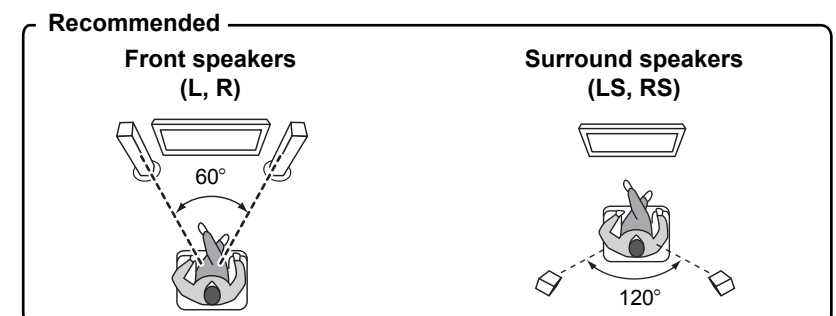
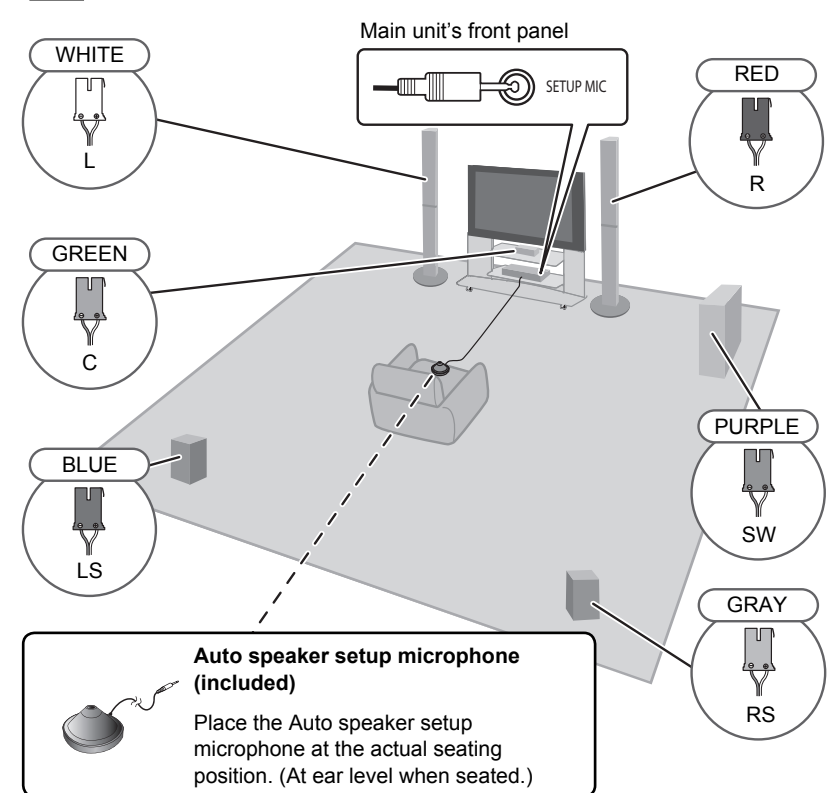
The order of setting



1 Prepare the speakers



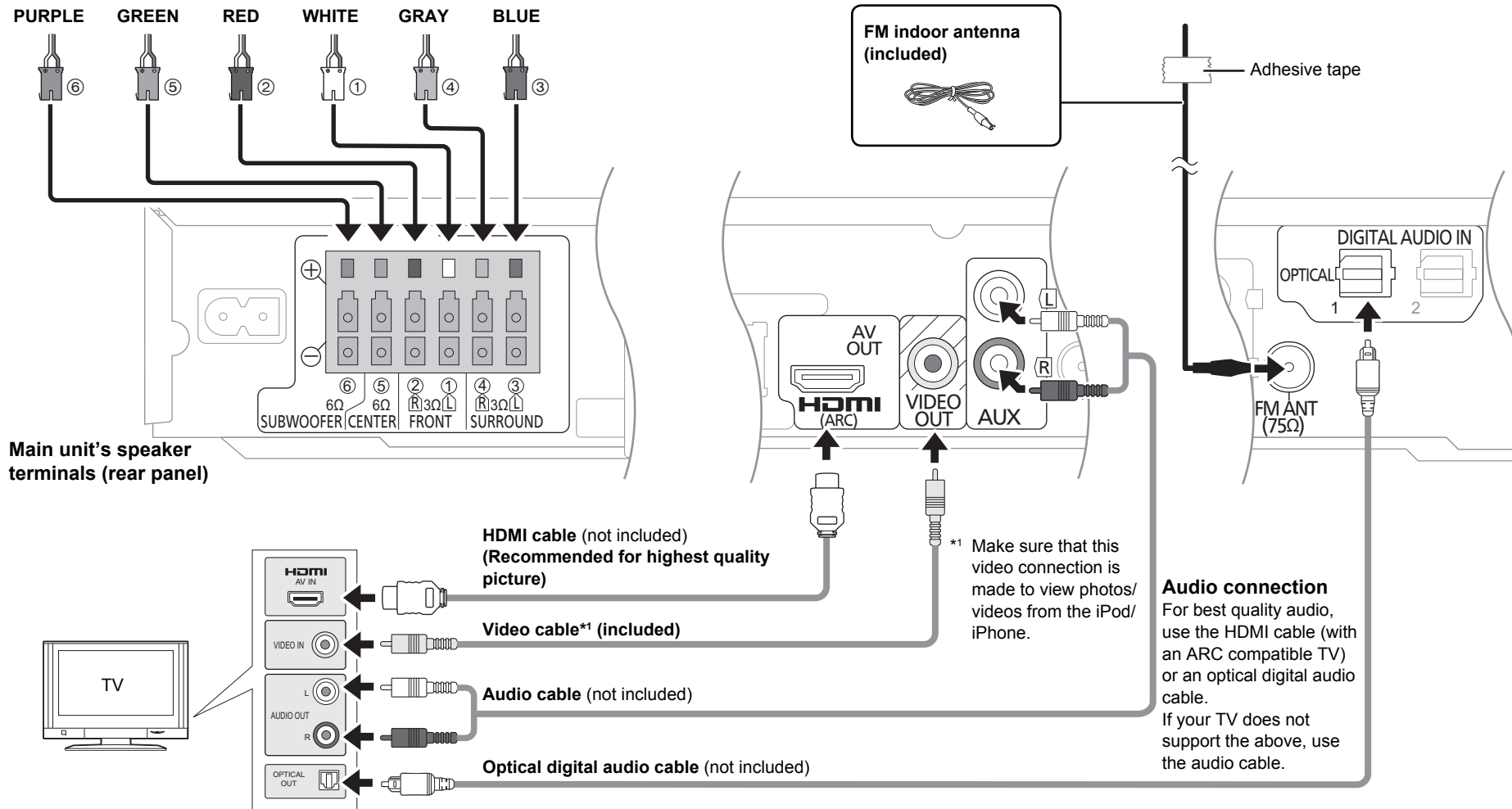
2 Place the speakers



3 Connect the cables

For detailed information, refer to the operating instructions.

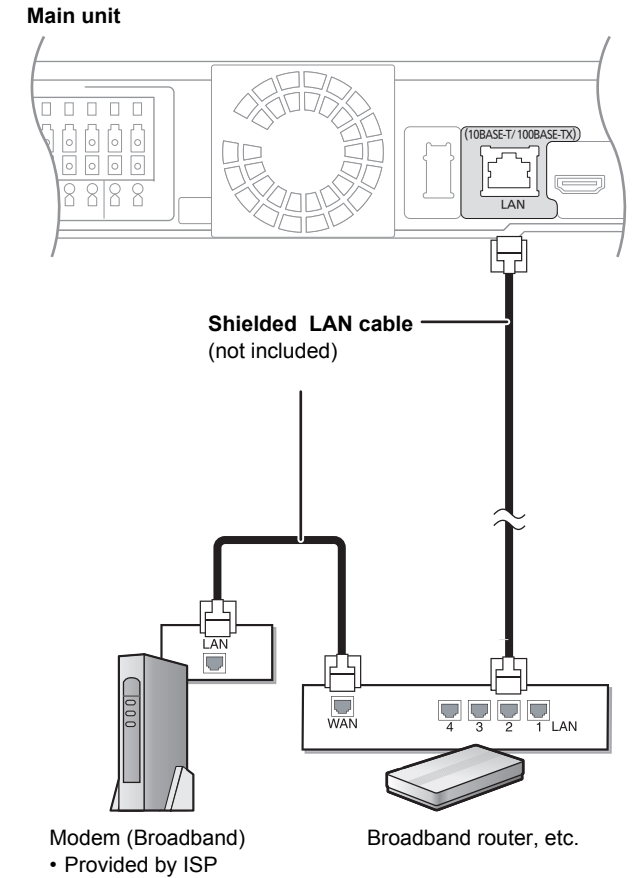
Connect the cables by color or by the numbers indicated in the illustration to the appropriate terminals on the rear panel of the unit.



Other connection

Broadband Network Connections (Optional)

By connecting this unit to the network, you can use the BD-Live and VIERA CAST features.



4 Turn on the main unit

1 Connect the AC power supply cord

Connect the AC power supply cord to the main unit before connecting to the household AC outlet.

Main unit

AC power supply cord (included)

To a household AC outlet (AC 120 V, 60 Hz)

2 Turn on the TV

Turn on your TV and select the appropriate video input mode (e.g., VIDEO 1, AV 1, HDMI, etc.) to suit the connections to this unit.

3 Turn on the main unit

Press [⏻] to turn on the main unit.

Installing batteries in the remote control

R6/LR6, AA

4 The Smart setup starts

The on screen display will guide you through the steps.*2

Press [◀, ▶] to select [Yes/Oui/Si].

*2 If you want to restart the Smart setup: Refer to "STEP 6: Smart setup / Easy setup" in the operating instructions.