



STAGE™

ON-WALL/OFF-WALL THEATER CENTER/FRONT/SURROUND

**ESL
SERIES**

ULTIMATE-PERFORMANCE ELECTROSTATIC CENTER CHANNEL

Designed to serve primarily as the center in a home theater incorporating MartinLogan electrostatic speakers, Stage is versatile enough to handle left, right, and surround channel duties as well. Dual 6.5-inch aluminum-cone woofers and an advanced Vojtko™ crossover perfectly integrate a solid bass performance with the astonishingly transparent, detailed midrange and treble provided by the XStat™ transducer. A single-pivot bracket/stand facilitates set-top, shelf, on-wall, or on-floor placement.

Frequency Response	69–22,000 Hz ± 3dB
Sensitivity	90 dB/2.83 volts/meter
Impedance	4 Ohms/2.9 @ 20kHz
Crossover Frequency	450, 2700 Hz
High Frequency Driver	1" (2.54cm) neodymium soft dome
Mid Frequency Driver	CLS™ XStat™ electrostatic
Low Frequency Drivers	Two 6.5" (16.5cm) aluminum cone
Power Handling	250 watts
Weight	39 lbs. (17.7kg)
Dimensions (mounting stand beneath, HxWxD)	12" x 34.6" x 10.3" (30.4 x 87.9 x 26.1cm)



The Loudspeaker Technology Company
www.martinlogan.com

Application:

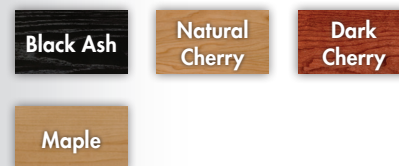
Home theater center/front/surround ideal for large and medium rooms.

Incorporating a state-of-the-art XStat™ electrostatic panel and a highly sophisticated Vojtko™ crossover, Stage takes versatility to the next level, working as a main or surround speaker, mounted on- or off-wall, horizontally or vertically.

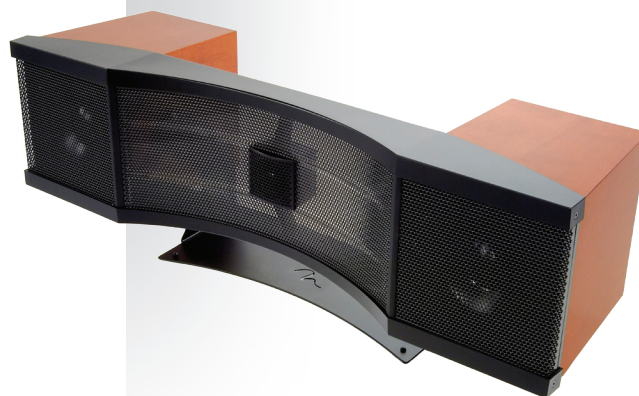
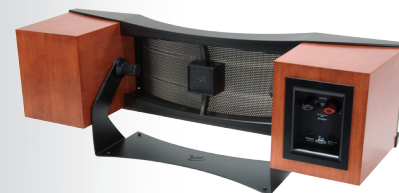
Key Features:

- HD-XStat™ (hybrid dynamic) CLS™ electrostatic transducer
- Dual 6.5-inch high-resolution aluminum cone woofers
- Precision Vojtko™ crossover
- Low-voltage power supply
- Multi-mount pivoting bracket/stand

FINISH OPTIONS



Visit configurator.martinlogan.com to explore the full range of finish options.



©2009 MartinLogan, Ltd. All rights reserved.