

# Technical Manual

# SUB135P

## JBL Cinema ProPack™ 600II

**JBL**

### ACOUSTIC & ELECTRICAL SPECIFICATIONS:

- Nominal Impedance 4 ohms
- Max Amp Power 100 watts\*
- Frequency Response 35Hz – 2.5kHz (–10dB)

### SYSTEM COMPONENTS:

- Cabinet SUB135P (not for sale)
- Low-Frequency Transducer 8" (203mm) cone  
(20MF10DAG-DW03)
- DC Resistance 3.4 ohms ±10%

### AURAL SWEEP TEST SPECIFICATIONS:

- System Aural Sweep Test 6.0V Input 35Hz to 2.5kHz

### PHYSICAL SPECIFICATIONS:

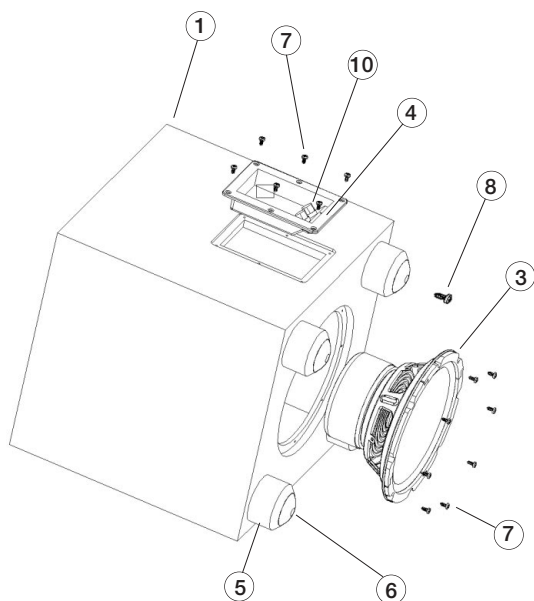
- Enclosure Dimensions 15" x 13" x 14"  
(H x W x D) 381mm x 330mm x 356mm
- Weight 30 lb/13.6kg

### WARRANTY:

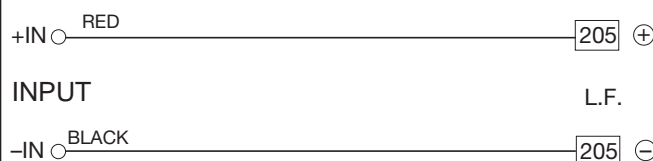
- Refer to Warranty Statement packed with each product.

\* The maximum recommended amplifier power rating will ensure proper system headroom to allow for occasional peaks. We do not recommend sustained operation at these maximum power levels.

### EXPLODED VIEW



### SUB135P Schematic



Item	Part No.	Description	Pcs.
1	Not for Sale	Cabinet	1
2	Not for Sale	Port tube	1
3	20MF10DAG-DW03	8" Woofer	1
4	700bp-x	Plastic terminal block	1
5	wi5447	Main plastic foot	4
6	wi5448	Rubber pad for foot	4
7	06-t4205012	Screw black t4*20	14
8	06-t5345005	Screw t5*34	4
9	wp5266	Foam for SUB135P	
10	t5015	Binding post (set)	1pr.
11	ai5193	Owner's manual	1

**Note:** Package is not shown because it is part of the JBL Cinema ProPack 600II system.