

# *Micro Hi-Fi Component System*

---

## Operating Instructions

## Owner's Record

The model and serial numbers are located at the rear. Record the serial number in the space provided below. Refer to them whenever you call upon your Sony dealer regarding this product.

Model No. \_\_\_\_\_ Serial No. \_\_\_\_\_



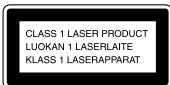
## *CMT-CP101*

## WARNING

### To prevent fire or shock hazard, do not expose the unit to rain or moisture.

To avoid electrical shock, do not open the cabinet. Refer servicing to qualified personnel only.

Do not install the appliance in a confined space, such as a bookcase or built-in cabinet.



This appliance is classified as a CLASS 1 LASER product. The CLASS 1 LASER PRODUCT MARKING is located on the rear exterior.

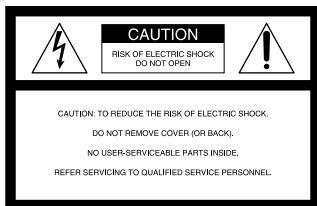
To prevent fire, do not cover the ventilation of the apparatus with news papers, table-cloths, curtains, etc. And don't place lighted candles on the apparatus.

To prevent fire or shock hazard, do not place objects filled with liquids, such as vases, on the apparatus.



Don't throw away the battery with general house waste, dispose of it correctly as chemical waste.

### NOTICE FOR THE CUSTOMERS IN THE U.S.A.



This symbol is intended to alert the user to the presence of uninsulated "dangerous voltage" within the product's enclosure that may be of sufficient magnitude to constitute a risk of electric shock to persons.



This symbol is intended to alert the user to the presence of important operating and maintenance (servicing) instructions in the literature accompanying the appliance.

### CAUTION

The use of optical instruments with this product will increase eye hazard.

### Note to CATV system installer:

This reminder is provided to call the CATV system installer's attention to Article 820-40 of the NEC that provides guidelines for proper grounding and, in particular, specifies that the cable ground shall be connected to the grounding system of the building, as close to the point of cable entry as practical.

### WARNING

This equipment has been tested and found to comply with the limits for a Class B digital device, pursuant to Part 15 of the FCC Rules. These limits are designed to provide reasonable protection against harmful interference in a residential installation. This equipment generates, uses, and can radiate radio frequency energy and, if not installed and used in accordance with the instructions, may cause harmful interference to radio communications. However, there is no guarantee that interference will not occur in a particular installation. If this equipment does cause harmful interference to radio or television reception, which can be determined by turning the equipment off and on, the user is encouraged to try to correct the interference by one or more of the following measures:

- Reorient or relocate the receiving antenna.
- Increase the separation between the equipment and receiver.
- Connect the equipment into an outlet on a circuit different from that to which the receiver is connected.
- Consult the dealer or an experienced radio/TV technician for help.

### CAUTION

You are cautioned that any changes or modifications not expressly approved in this manual could void your authority to operate this equipment.

### NOTICE FOR THE CUSTOMERS IN CANADA

### CAUTION

TO PREVENT ELECTRIC SHOCK, DO NOT USE THIS POLARIZED AC PLUG WITH AN EXTENSION CORD, RECEPTACLE OR OTHER OUTLET UNLESS THE BLADES CAN BE FULLY INSERTED TO PREVENT BLADE EXPOSURE.

For the customers in North America



ENERGY STAR® is a U.S. registered mark.

As an ENERGY STAR® partner, Sony Corporation has determined that this product meets the ENERGY STAR® guidelines for energy efficiency.

# Table of Contents

## List of Button Locations and Reference Pages

Main unit .....	4
Remote Control .....	5

---

## Getting Started

Hooking up the system .....	6
Inserting two size-AA (R6) batteries into the remote control .....	7
Setting the clock .....	7

---

## CD

Loading the CD .....	8
Playing the CD	
— Normal Play/Shuffle Play/Repeat Play ....	8
Programming the CD tracks	
— Program Play .....	9

---

## Tuner

Presetting radio stations .....	9
Listening to the radio .....	11
Using the Radio Data System (RDS)* ....	11

---

## Tape

Loading a tape .....	12
Playing a tape .....	12
Recording to a tape	
— CD Synchro Recording/	
Recording Manually/Program Edit ...	13
Timer-recording radio programs .....	14

---

## Sound Adjustment

Adjusting the sound .....	15
---------------------------	----

---

## Display

Using the display .....	16
-------------------------	----

---

## Other Features

Falling asleep to music	
— Sleep Timer .....	16
Waking up to music	
— Daily Timer .....	16

---

## Optional Components

Hooking up optional components .....	18
Listening to audio from a connected component .....	18
Recording on a connected component ...	18

---

## Troubleshooting

Problems and remedies .....	19
-----------------------------	----

---

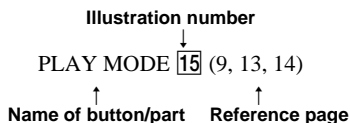
## Additional Information

Precautions .....	21
Specifications .....	22

\* European model only

How to use this page

Use this page to find the location of buttons and other parts of the system that are mentioned in the text.



## Main unit

### ALPHABETICAL ORDER

#### A - R

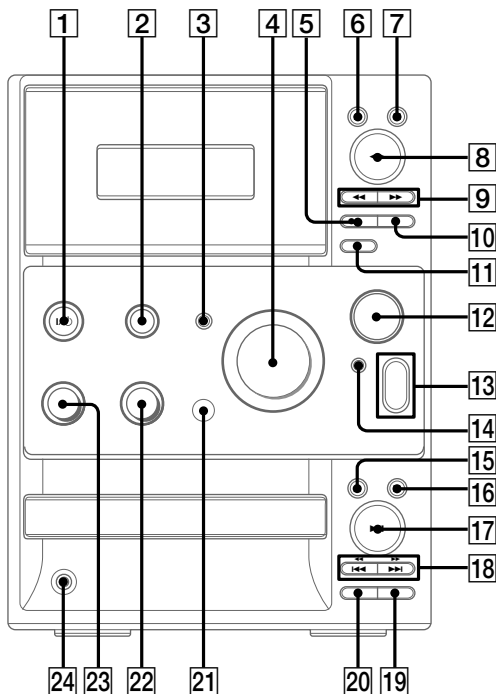
BASS 23 (15)  
 CD EJECT 15 (8)  
 CD SYNC 11 (13, 14)  
 CD ▶|| 17 (8, 9)  
 CD ■ 16 (8-10, 18, 20)  
 CD ◀◀/▶▶ 18 (8, 9)  
 CD ◀◀/▶▶ 18 (8)  
 DSG 3 (15)  
 FUNCTION 2 (8-10, 12, 13, 18)  
 PHONES jack 24  
 PLAY MODE 20 (8, 9, 14)  
 Remote sensor 21  
 REPEAT 19 (8)

#### T - V

TAPE EJECT ▲ 6 (12)  
 TAPE ● REC 5 (13)  
 TAPE ◀◀ 8 (12-14)  
 TAPE || 10 (12-14)  
 TAPE ■ 7 (12-14, 20)  
 TAPE ◀◀/▶▶ 9 (12)  
 TREBLE 22 (15)  
 TUNER BAND 12 (9, 10, 20)  
 TUNING MODE 14 (9-11)  
 TUNING +/- 13 (9-11)  
 VOLUME 4 (17)

### BUTTON DESCRIPTIONS

I/⏻ (power) 1 (7, 10, 15, 17)



# Remote Control

## ALPHABETICAL ORDER

### A - M

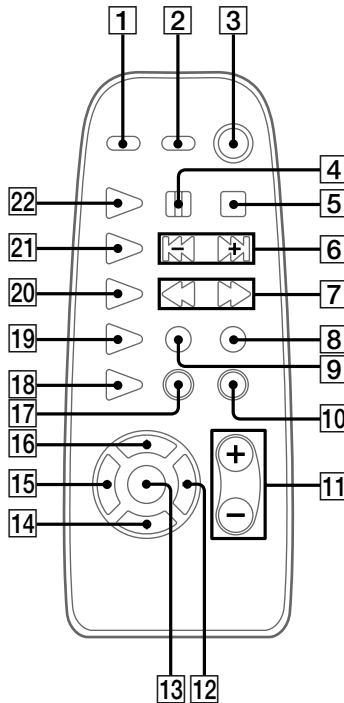
- CD REPEAT **18** (8)
- CD **22** (8, 9)
- DIR MODE **19** (12-14)
- DISPLAY **2** (11, 16)
- DSG **1** (15)
- ENTER **13** (7, 10, 15, 17)
- FM MODE **9** (11)
- FUNCTION **17** (8-10, 12, 13, 18)
- MEMORY **16** (10)

### S - V

- SLEEP **14** (16)
- TAPE **20** (12-14)
- TIMER SELECT **12** (15, 17)
- TIMER SET **15** (7, 14, 17)
- TUNER/BAND **21** (10)
- TUNING MODE/PLAY MODE **10** (8, 9, 10, 11, 14)
- VOL +/- **11** (17)

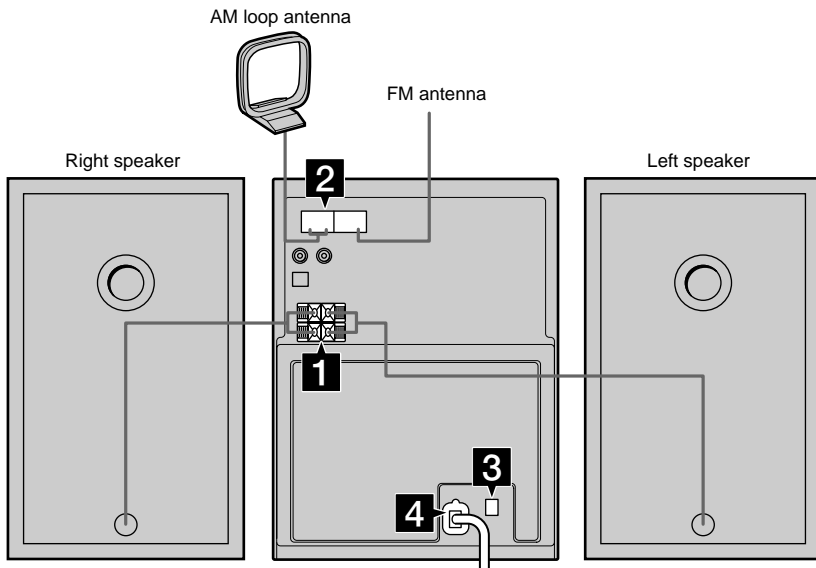
## BUTTON DESCRIPTIONS

- 4** (8, 12-14)
- 5** (8, 9, 12-14)
- 6** (7-10, 14, 15, 17)
- 7** (8, 10-12)
- 3** (7, 15, 17)
- 8** (13)



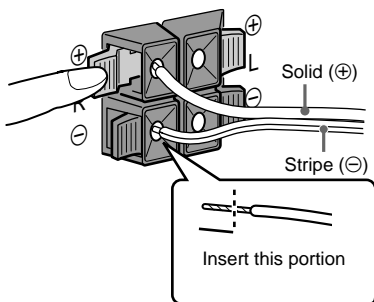
# Hooking up the system

Follow steps **1** through **4** of the procedure below to hook up your system using the supplied cords and accessories.



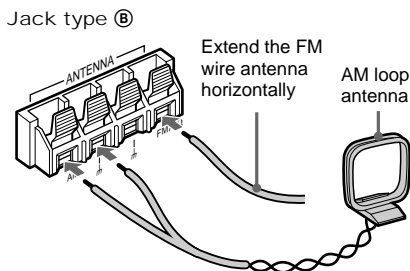
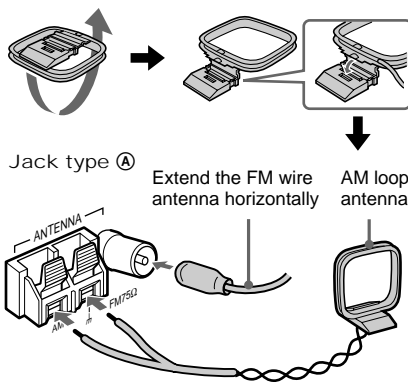
## 1 Connect the speakers.

Connect the right and left speaker cords to the SPEAKER terminals as shown below.



## 2 Connect the FM and AM antennas.

Set the AM loop antenna up before connecting it.



- 3** For models with a voltage selector, set **VOLTAGE SELECTOR** to the local power line voltage.

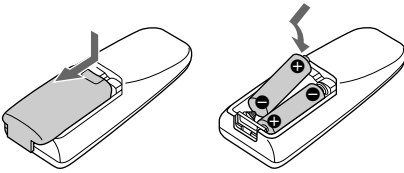


- 4** Connect the power cord to a wall outlet.

If the plug does not fit the wall socket, detach the supplied plug adaptor (only for models equipped with an adaptor).

To turn on the system, press **I/⏻**.

## Inserting two size-AA (R6) batteries into the remote control



### Tip

When the remote no longer operates the system, replace both batteries with new ones.

### Note

If you do not use the remote for a long period of time, remove the batteries to prevent possible damage from battery leakage and corrosion.

## Setting the clock

- 1 Turn on the system.
- 2 Press **TIMER SET** on the remote.
- 3 Press **◀◀/▶▶** on the remote repeatedly to set the hour.
- 4 Press **ENTER** on the remote.  
The minute indication flashes.
- 5 Press **◀◀/▶▶** on the remote repeatedly to set the minute.
- 6 Press **ENTER** on the remote.  
The clock will begin operating.

To adjust the clock

- 1 Press **TIMER SET** on the remote.
- 2 Press **◀◀** or **▶▶** on the remote to select "SET CLOCK", then press **ENTER** on the remote.
- 3 Do the same procedures as step 3 to 6 above.

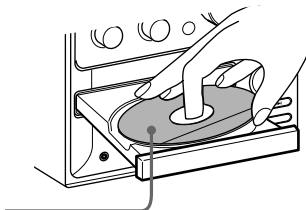
## Loading the CD

### 1 Press CD EJECT ▲.

The disc tray slides out.

### 2 Load a CD onto the disc tray.

Load with the label side up. When you play a CD single (8 cm CD), load it onto the inner circle of the tray.

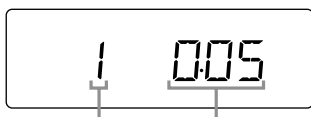


### 3 Press CD EJECT ▲ again to close the disc tray.

## Playing the CD

### — Normal Play/Shuffle Play/Repeat Play

This system lets you play CDs in different play modes.



Track number    Playing time

### 1 Press FUNCTION repeatedly until “CD” appears in the display.

### 2 Press PLAY MODE (or TUNING MODE/PLAY MODE on the remote) repeatedly until the mode you want appears in the display.

Select	To play
No display	The CD in original order.
SHUFFLE	The tracks on the CD in random order.
PGM	The tracks on the CD in any order that you want (see “Programming the CD tracks” on page 9).

### 3 Press CD ►► (or CD ► on the remote).

## Other Operations

To	Do this
Stop playback	Press CD ■.
Pause	Press CD ►► (or ►► on the remote). Press again to resume playback.
Select a track	During playback or pause, press CD ◀◀/▶▶ repeatedly until you find the desired track.
Find a point in a track	During playback, press and hold down CD ◀◀/▶▶ until you find the desired point.
Remove the CD	Press CD EJECT ▲.
Play repeatedly (Repeat Play)	Press REPEAT repeatedly during playback until “REPEAT” or “REPEAT 1” appears in the display.  REPEAT: For all the tracks on the CD.  REPEAT 1: For only the currently playing track.  To cancel playing repeatedly, press REPEAT repeatedly until “REPEAT” and “REPEAT 1” disappear from the display.

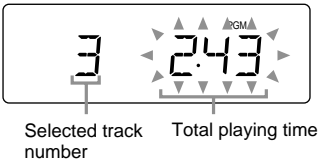


## Programming the CD tracks

### — Program Play

You can make a program up to 24 tracks on a CD in any order that you want.

- 1 Press **FUNCTION** repeatedly until “CD” appears in the display.
- 2 Press **PLAY MODE** (or **TUNING MODE/PLAY MODE** on the remote) repeatedly until “PGM” appears in the display.
- 3 Press **CD** **◀◀/▶▶** repeatedly until the desired track number appears in the display.



- 4 Press **PLAY MODE** (or **TUNING MODE/PLAY MODE** on the remote).  
The selected track is programmed.  
The selection number appears in the display.
- 5 To program additional tracks, repeat steps 3 and 4.
- 6 Press **CD** **▶▶** (or **CD** **▶** on the remote).

To	Do this
Cancel Program Play	Press <b>PLAY MODE</b> (or <b>TUNING MODE/PLAY MODE</b> on the remote) repeatedly until “PGM” disappears from the display.
Add a track to the end of the program	Do steps 3 and 4 with Program Play stopped.
Erase the entire program	Press <b>CD</b> <b>■</b> with Program Play stopped.

#### Tips

- The program you made remains after Program Play finishes. To play the program again, switch the function to CD, and then press **CD** **▶▶** (or **CD** **▶** on the remote).
- “--:--” appears in the display when the total program time exceeds 100 minutes.

## Presetting radio stations

You can preset up to 20 FM stations and 10 AM stations. You can then tune in any of those stations simply by selecting the corresponding preset number.

There are two ways to store the station presets.

To	Method
Automatically tune all of the stations that can be received in your area and then store them manually	Automatic Tuning Preset
Manually tune and store the radio frequency of your favorite stations	Manual Tuning Preset

### Setting presets through automatic tuning

- 1 Press **FUNCTION** repeatedly until “TUNER” appears in the display.
- 2 Press **TUNER BAND** to select FM or AM.
- 3 Press **TUNING MODE** (or **TUNING MODE/PLAY MODE** on the remote) repeatedly until “AUTO” appears in the display.
- 4 Press **TUNING +/-** (or **◀◀/▶▶** on the remote).

The frequency changes as the system scans for a station. Scanning stops automatically when a station is tuned in. At that time, “TUNED” and “STEREO” (for stereo program only) appear.

#### If “TUNED” does not appear and the scanning does not stop

Set the frequency of the desired radio station as described in steps 3 through 7 of “Setting presets through manual tuning”.

continued

## Presetting radio stations (continued)

### 5 Press MEMORY on the remote.

A preset number flashes.



Preset number      Frequency

### 6 Press ◀◀/▶▶ on the remote repeatedly to select the preset number that you want.

### 7 Press ENTER on the remote.

The station is stored to the selected preset number.

### 8 Repeat steps 2 through 7 to preset other stations.

#### Tip

Press TUNING MODE (or TUNING MODE/PLAY MODE on the remote) when you want to stop scanning.

## Setting presets through manual tuning

### 1 Press FUNCTION repeatedly until "TUNER" appears in the display.

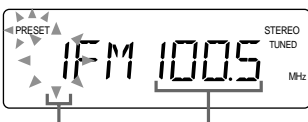
### 2 Press TUNER BAND to select FM or AM.

### 3 Press TUNING MODE (or TUNING MODE/PLAY MODE on the remote) repeatedly until "AUTO" and "PRESET" disappear from the display.

### 4 Press TUNING +/- (or ◀◀/▶▶ on the remote) repeatedly to tune in the desired station.

### 5 Press MEMORY on the remote.

A preset number flashes.



Preset number      Frequency

### 6 Press ◀◀/▶▶ on the remote repeatedly to select the preset number that you want.

### 7 Press ENTER on the remote.

The station is stored to the selected preset number.

### 8 Repeat steps 2 through 7 to preset other stations.

## Other Operations

To	Do this
Tune in a station with a weak signal	Follow the procedure described in "Setting presets through manual tuning".
Stop setting presets	Press TUNING MODE (or TUNING MODE/PLAY MODE on the remote).
To change the preset number	Start over from step 2.

## To change the AM tuning interval (Except for the European, Middle Eastern and Philippine models)

The AM tuning interval is factory-preset to 9 kHz (or 10 kHz for some areas). To change the AM tuning interval, tune in any AM station first, then turn off the system. Press and hold TUNING + and CD ■. When you change the interval, all the AM preset stations are erased. To reset the interval, tune in any AM station first, then turn off the system. Press and hold TUNING – and CD ■.

#### Tips

- The preset stations are retained for about a day even if you disconnect the mains lead or if a power failure occurs.
- To improve the reception, adjust the supplied antennas or connect an external antenna.

## Listening to the radio

You can listen to a radio station either by selecting a preset station, or by manually tuning in the station.

### Listening to a preset station

#### — *Preset Tuning*

Preset radio stations in the tuner's memory first (see "Presetting radio stations" on page 9).

- 1 Press **FUNCTION** repeatedly until **"TUNER"** appears in the display.
- 2 Press **TUNER BAND** to select **FM** or **AM**.
- 3 Press **TUNING MODE** (or **TUNING MODE/PLAY MODE** on the remote) repeatedly until **"PRESET"** appears in the display.
- 4 Press **TUNING +/-** (or **◀◀/▶▶** on the remote) repeatedly to select the desired preset station.

### Listening to non-preset radio station

#### — *Manual Tuning*

- 1 Press **FUNCTION** repeatedly until **"TUNER"** appears in the display.
- 2 Press **TUNER BAND** to select **FM** or **AM**.
- 3 Press **TUNING MODE** (or **TUNING MODE/PLAY MODE** on the remote) repeatedly until **"AUTO"** and **"PRESET"** disappear from the display.
- 4 Press **TUNING +/-** (or **◀◀/▶▶** on the remote) repeatedly to tune in the desired station.

#### Tips

- To improve broadcast reception, adjust the supplied aerials, or connect a commercially available external aerial.
- When an FM stereo program has static noise, press **FM MODE** repeatedly until **"MONO"** appears. There will be no stereo effect, but the reception will improve.
- Press **TUNING MODE** (or **TUNING MODE/PLAY MODE** on the remote) repeatedly until **"AUTO"** appears in step 3 above, then press **TUNING +/-** (or **◀◀/▶▶** on the remote). The frequency indication changes and scanning stops when the system tunes in a station (Automatic Tuning).

## Using the Radio Data System (RDS)

(European model only)

### What is the Radio Data System?

Radio Data System (RDS) is a broadcasting service that allows radio stations to send additional information along with the regular program signal. RDS is available only on FM stations.\*

#### Note

RDS may not work properly if the station you are tuned in is not transmitting the RDS signal properly or if the signal is weak.

\* Not all FM stations provide RDS service, nor do they provide the same types of services. If you are not familiar with the RDS system, check with your local radio stations for details on RDS services in your area.

### Receiving RDS broadcasts

#### Simply select a station from the FM band.

When you tune in a station that provides RDS services, the station name appears in the display.

To check the RDS information

Each time you press **DISPLAY** on the remote, the display changes cyclically as follows:

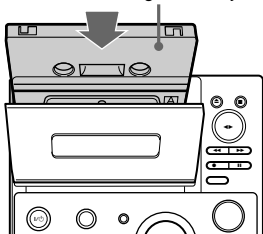
Station name\* → Frequency → Clock display

\* If the RDS broadcast is not properly received, the station name may not appear in the display.

## Loading a tape

- 1 Press **TAPE EJECT** ▲.
- 2 Load a recorded/recordable tape into the cassette holder.

With the side you want to play/  
record on facing towards you



## Playing a tape

You can use Type I (normal) tape.

- 1 Load a recorded tape into the cassette holder.
- 2 Press **FUNCTION** repeatedly until “TAPE” appears in the display.
- 3 Press **DIR MODE** on the remote repeatedly to select “↔” to play one side of the tape, “↔)” to play both sides, or “(↔)”\* to play both sides repeatedly.

\* The tape automatically stops after playing back five times.

- 4 Press **TAPE** ◀▶.

Press **TAPE** ▶◀ again to play the reverse side. The tape starts playing back.

## Other Operations

To	Do this
Stop playback	Press <b>TAPE</b> ■.
Pause	Press <b>TAPE</b>    (or    on the remote). Press again to resume playback.
Fast-forward or rewind	With the tape stopped, press <b>TAPE</b> ◀◀/▶▶.
Remove the tape	Press <b>TAPE EJECT</b> ▲.

# Recording to a tape

## — CD Synchro Recording/Recording Manually/Program Edit

You can record from a CD (or connected components) or radio. You can use Type I (normal) tape.

Steps	Recording from a CD (CD Synchro Recording)	Recording manually
1	Load a recordable tape into the cassette holder.	
2	Load a CD onto the disc tray.	Press <b>FUNCTION</b> repeatedly to select the source you want to record from.
3	Press <b>FUNCTION</b> repeatedly until "CD" appears in the display.	Load a CD (or other music source), or tune in the desired station.
4	Press <b>CD SYNC.</b>	Press <b>TAPE ● REC.</b>
	The tape stands by for recording. "REC" and "▶" (or "◀") appear. To start recording on the side facing away from you, press <b>TAPE ◀▶</b> until "REC▶" changes to "◀REC."	
5	Press <b>DIR MODE</b> on the remote repeatedly to select "↔" to record on one side of the tape, or "↔)" or "(↔)" to record on both sides.	
6	Press <b>TAPE ■.</b>	Press <b>TAPE ■</b> , and then start playing the desired source.

To stop recording

Press **TAPE ■.**

Tip

For recording manually:

To pause recording, press **TAPE ■.**

continued

## Recording to a tape (continued)

Recording CD tracks in your favorite order

— *Program Edit*

- 1 Load a recordable tape into the cassette holder.
- 2 Load a CD onto the disc tray.
- 3 Press **FUNCTION** repeatedly until “CD” appears in the display.
- 4 Press **PLAY MODE** (or **TUNING MODE/PLAY MODE** on the remote) repeatedly until “PGM” appears in the display.
- 5 Press **CD** **I◀◀/▶▶I** repeatedly until the desired track number appears in the display.
- 6 Press **PLAY MODE** (or **TUNING MODE/PLAY MODE** on the remote).  
The selected track is programmed.  
The selection number appears in the display.  
To program additional tracks, repeat steps 5 and 6.
- 7 Press **CD SYNC**.  
The tape stands by for recording and the CD stands by for playback.  
“**REC**” and “▶” (or “◀”) appear, and the CD SYNC indicator lights up.  
To start recording on the side facing away from you, press **TAPE** **◀▶** until “**REC▶**” changes to “**◀REC.**”
- 8 Press **DIR MODE** on the remote repeatedly to select “↔” to record on one side of the tape, or “↔)” or “(↔)” to record on both sides.
- 9 Press **TAPE III**.

To	Do this
Stop recording	Press <b>TAPE III</b> .
Cancel Program Edit	Press <b>PLAY MODE</b> (or <b>TUNING MODE/PLAY MODE</b> on the remote) repeatedly until “PGM” disappears from the display.

To place a specific number of tracks on each side of the tape during CD Synchro Recording

- 1 Program the tracks for the first side by doing steps 1 to 6.
- 2 Press **III** on the remote.
- 3 Program the tracks for the other side by doing steps 5 and 6.
- 4 Do steps 7 to 9 (see Note below).

When the **III** command is detected during CD Synchro Recording, the CD will pause, the first side of the tape will continue running till it ends, the tape will reverse direction, the CD will play and recording of the remaining tracks will resume on the other side of the tape.

Note

To enable two-sided recording, you must select “↔)” or “(↔)” in step 8 on the left.

## Timer-recording radio programs

To timer-record, make sure that you have set the system clock correctly (see “Setting the clock” on page 7) and preset the radio station (see “Presetting radio stations” on page 9).

- 1 Tune in the desired preset radio station (see “Listening to the radio” on page 11).
- 2 Load a recordable tape.
- 3 Press **TIMER SET** on the remote.
- 4 Press **I◀◀/▶▶I** on the remote repeatedly until “SET REC” appears in the display.  
“SET REC” scrolls and “⊖ REC” appears in the display.
- 5 Press **ENTER** on the remote.  
“ON TIME” appears, then the hour indication flashes.

## 6 Set the starting time.

Press **◀◀/▶▶** on the remote repeatedly to set the hour, then press **ENTER** on the remote.

The minute indication begins flashing next.

Press **◀◀/▶▶** on the remote repeatedly to set the minute, then press **ENTER** on the remote.

“OFF TIME” appears, then the hour indication flashes again.

## 7 Set the stopping time by repeating step 6.

The start time, the stopping time, “TUNER”, and the preset station appear in turn, then the original display returns.

## 8 Press **I/⏻** to turn off the system.

When the recording starts, the volume level is automatically set to the minimum.

To	Do this
Check the settings	Press <b>TIMER SELECT</b> on the remote repeatedly until “⏻ REC” appears in the display. The preset items appear in turn.
Turn off the timer	Press <b>TIMER SELECT</b> on the remote repeatedly until “⏻ REC” disappears from the display.

### Tip

Once you set the timer, the time settings will remain in the system’s memory until you change them, even when you turn the system or the timer off. The settings that were last used will be in effect when you turn the timer on again.

### Notes

- The system will turn on 15 seconds before the specified starting time.
- If the system is turned on at the specified starting time, recording will not occur.
- When you have set the Sleep Timer, the timer recording will not operate until the Sleep Timer Function is turned off.
- You cannot operate the Daily Timer and the timer recording at the same time.

## Adjusting the sound

Generating a more dynamic sound (Dynamic Sound Generator)

Press **DSG**.

To cancel the DSG, press **DSG** again.

Adjusting the bass

Turn **BASS**.

You can adjust the bass.

Adjusting the treble

Turn **TREBLE**.

You can adjust the treble.

## Using the display

### Checking the remaining time (CD)

#### Press DISPLAY on the remote during play.

Each time you press the button, the display changes cyclically as follows:

Current track number and elapsed playing time of the track → Current track number and remaining playing time of the track\* → Remaining playing time of the entire CD → Clock display

\* “\_ \_ \_ \_ \_” appears when you check the remaining playing time of a CD track whose number is 25 or over.

### Checking the total playing time (CD)

#### Press DISPLAY on the remote in stop mode.

Each time you press the button, the display changes cyclically as follows:

Total playing time → Clock display → Current source display

## Falling asleep to music

### — Sleep Timer

The Sleep Timer Function lets you specify a sleep time, after which the system stops playing and turns off automatically. You can thus fall asleep to music.

#### Press SLEEP on the remote repeatedly.

The sleep time changes as follows:

AUTO\* → 90MIN → 80MIN → 70MIN → ... → 10MIN → OFF → AUTO\* → ...

\* The system turns off after the current CD or tape finishes playing (up to 100 minutes). The system also turns off when you manually stop the CD or tape.

To	Press
Check the remaining sleep time**	SLEEP on the remote once.
Change the sleep time	SLEEP on the remote repeatedly until the time you want appears.
Cancel the Sleep Timer Function	SLEEP on the remote repeatedly until “OFF” appears.

\*\* You cannot check the remaining time if you select “AUTO”.

## Waking up to music

### — Daily Timer

By setting the Daily Timer, you can make the system automatically turn on and off at specified times. To use this function, make sure that you have set the system clock correctly (see “Setting the clock” on page 7).



- 1 Prepare the music source you want to listen to when the system turns on.**
  - CD: Load a CD. To start playing from a specific track, make a program (see “Programming the CD tracks” on page 9).
  - Tape: Load a tape with the side you want to play facing towards you.
  - Radio: Tune in the preset radio station that you want (see “Listening to the radio” on page 11).

**2 Adjust the volume.**

**3 Press TIMER SET on the remote.**

- 4 Press ◀◀/▶▶ on the remote repeatedly until “SET DAILY” appears in the display.**  
 “SET DAILY” scrolls and “⌚ DAILY” appears in the display.

- 5 Press ENTER on the remote.**  
 “ON TIME” appears, then the hour indication flashes.

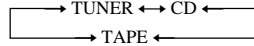
**6 Set the starting time.**

Press ◀◀/▶▶ on the remote repeatedly to set the hour, then press ENTER on the remote.  
 The minute indication begins flashing next.  
 Press ◀◀/▶▶ on the remote repeatedly to set the minute, then press ENTER on the remote.  
 “OFF TIME” appears, then the hour indication flashes again.

**7 Set the stopping time by repeating step 6.**

- 8 Press ◀◀/▶▶ on the remote repeatedly until the music source you want appears.**

The display changes as follows:



- 9 Press ENTER on the remote.**

The starting time, the stopping time, and the music source appear in turn, then the original display returns.

**10 Press I/⏻ to turn off the system.**

To	Do this
Check the settings	Press TIMER SELECT on the remote repeatedly until “⌚ DAILY” appears in the display. The preset items appear in turn.
Turn off the timer	Press TIMER SELECT on the remote repeatedly until “⌚ DAILY” disappears from the display.

**Tip**

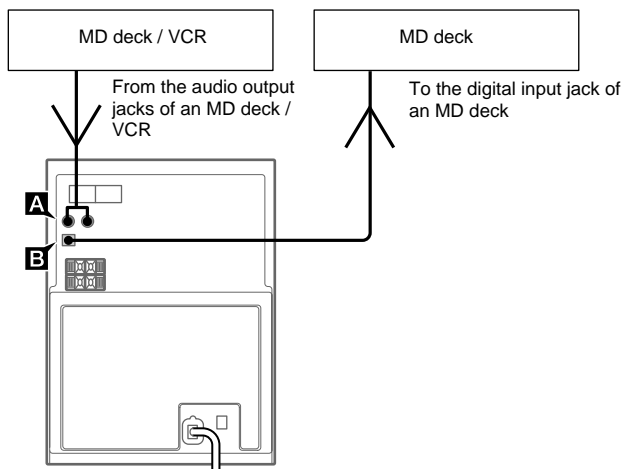
Once you set the timer, the time settings will remain in the system’s memory until you change them, even when you turn the system or the timer off. The settings that were last used will be in effect when you turn the timer on again.

**Notes**

- The system will turn on 15 seconds before the specified starting time.
- When you have set the Sleep Timer, the Daily Timer will not operate until the Sleep Timer Function is turned off.
- You cannot operate the Daily Timer and the timer recording at the same time.

## Hooking up optional components

To enhance your system, you can connect optional components. Refer to the operating instructions provided with each component.



### **A** AUDIO IN (MD/VIDEO) jacks

Use audio cords (not supplied) to connect an MD deck or VCR to these jacks. You can then listen to analog audio from the MD deck or VCR through this system.

### **B** OPTICAL DIGITAL OUT (CD) jack

Use a digital optical cable (square, not supplied) to connect an MD deck to this jack. You can then output the digital audio to the MD deck from this system. If the jack is covered with a cap, remove it before use.

## Listening to audio from a connected component

- 1 Connect the audio cords.
- 2 Press **FUNCTION** repeatedly until “MD” or “VIDEO” appears.  
Start playing the connected component.

### Tip

If you cannot select “VIDEO” by pressing **FUNCTION** repeatedly, turn off the system and then press **CD** and **FUNCTION** at the same time. The function will change from “MD” to “VIDEO”, and “VIDEO” will appear in the display. To change back to “MD”, repeat this procedure.

## Recording on a connected component

- 1 Connect the digital optical cable.
- 2 Start recording.  
Refer to the operating instructions provided with connected component.

## Problems and remedies

Should you encounter a problem with your system, do the following:

- 1 Make sure the power cord and speaker cords are correctly and firmly connected.
- 2 Find your problem in the troubleshooting checklist below and take the indicated corrective action.

If the problem persists after doing all of the above, consult your nearest Sony dealer.

### General

#### **There is no sound from the speakers.**

- Adjust the volume.
- The headphones are connected.
- Check the speaker connections.

#### **There is severe hum or noise.**

- A TV or VCR is placed too close to the unit. Move the unit away from the TV or VCR.

#### **“0:00” (or “AM 12:00”) flashes in the display.**

- A power interruption has occurred. Set the clock (see page 7) and timer settings (see pages 14 and 16) again.

#### **The timer does not function.**

- Make sure the clock is correctly set (see page 7).

#### **☹ DAILY” and “☹ REC” do not appear when you press TIMER SELECT on the remote.**

- Make sure each timer is correctly set (see pages 14 and 16).
- Make sure the clock is correctly set (see page 7).

#### **The color on the TV screen is irregular.**

- Move the speakers farther away from the TV set.

#### **The remote does not work.**

- There is an obstacle between the remote and the unit.
- You are not pointing the remote in the direction of the system’s sensor.
- The batteries in the remote have run down. Replace the batteries.
- Make sure that the batteries are inserted correctly.

### Speakers

#### **Sound comes from only one channel, or the left and right volumes are unbalanced.**

- Check the speaker connections and placement.

### CD Player

#### **The CD will not play.**

- The CD is dirty.
- The surface of the CD is scratched. Replace the CD.
- The CD is loaded with the label side down.
- Condensation has built up in the system. Remove the CD and leave the system turned on for about an hour until the moisture evaporates.

#### **Play does not start from the first track.**

- The player is in Program or Shuffle Play. Press PLAY MODE (or TUNING MODE/PLAY MODE on the remote) repeatedly until “PGM” and “SHUFFLE” disappear.

### Tape Deck

#### **Recording cannot be done.**

- There is no tape in the cassette holder.
- The record protect tab has been removed from the cassette (see page 21).
- The tape has come to the end.

#### **The tape does not record or play, or there is a decrease in sound level.**

- The heads are dirty. Clean them (see page 21).
- The record/playback heads are magnetized. Demagnetize them (see page 21).

#### **The tape does not erase completely.**

- The record/playback heads are magnetized. Demagnetize them (see page 21).

#### **There is excessive wow or flutter, or the sound drops out.**

- The capstans or pinch rollers are dirty. Clean them (see page 21).

#### **Noise increases or the high frequencies are missing.**

- The record/playback heads are magnetized. Demagnetize them (see page 21).

**continued**

## **Problems and remedies (continued)**

### Tuner

---

**There is a severe hum or noise (“TUNED” or “STEREO” flashes).**

- Adjust the antenna.
  - The signal strength is too weak. Connect an external antenna.
  - Make sure that the antenna is connected properly.
  - Do not bend or roll up the antenna.
  - The two wires comprising the FM antenna have been pulled further apart since the system was first purchased. Repair or replace with a new one.
  - The AM antenna wire is detached from the stand.
  - Keep the antennas as far away from the speaker cords as possible.
- 

**A stereo FM program cannot be received in stereo.**

- Press FM MODE on the remote until “STEREO” appears in the display.
- 

### Resetting the system

With the system turned on, press TAPE ■, CD ■ and TUNER BAND at the same time. The system is reset to the factory settings. All previous settings are cleared and must be set again.

### Messages

One of the following messages may appear or flash in the display during operations.

---

#### **NO DISC**

- There is no CD on the disc tray.
- 

#### **PGM FULL**

- You try to program 25 tracks or more.
- 

#### **PROTECT**

- Consult your nearest Sony dealer.
-

## Precautions

### On operating voltage

Before operating the system, check that the operating voltage of your system is identical with the voltage of your local power supply.

### On safety

- The unit is not disconnected from the AC power source (mains) as long as it is connected to the wall outlet, even if the unit itself has been turned off.
- Unplug the system from the wall outlet (mains) if it will not be used for an extended period of time. To disconnect the power cord (mains lead), pull it out by the plug. Never pull the cord itself.
- Should any solid object or liquid fall into the system, unplug the system and have it checked by qualified personnel before operating it any further.
- AC power cord must be changed only at the qualified service shop.

### On placement

- Do not place the system in an inclined position.
- Do not place the system in locations where it is:
  - Extremely hot or cold
  - Dusty or dirty
  - Very humid
  - Subject to vibrations
  - Subject to direct sunlight

### On heat buildup

- Although the unit heats up during operation, this is not a malfunction.
- Place the system in a location with adequate ventilation to prevent heat build-up in the system.

If you continuously use this system at a large volume, the cabinet temperature of the top, side and bottom rises considerably. To avoid burning yourself, do not touch the cabinet.

To prevent a malfunction, do not cover the ventilation hole for the cooling fan.

### On operation

- If the system is brought directly from a cold place to a warm place, or is placed in a very damp room, moisture may condense on the lens inside the CD player. Should this occur, the system will not operate properly. Remove the CD and leave the system turned on for about an hour until the moisture evaporates.
- When moving the unit, remove any disc that may be on the disc tray.

If you have any questions or problems concerning your system, please consult your nearest Sony dealer.

### Notes on CDs

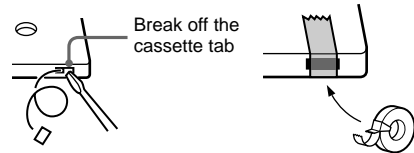
- Before playing a CD, clean the CD surface with a cleaning cloth. Wipe the CD from the center out.
- Do not play a CD with tape, stickers, or adhesives on any of its surfaces as this may damage the system.
- Do not use solvents.
- Do not expose the CDs to direct sunlight or heat sources.
- Disc with non-standard shapes (e.g., heart, square, star) cannot be played on this system. Attempting to do so may damage the system. Do not use such discs.

### Cleaning the cabinet

Clean the cabinet, panel and controls with a soft cloth slightly moistened with mild detergent solution. Do not use any type of abrasive pad, scouring powder or solvent such as thinner, benzene or alcohol.

### To save a tape permanently

To prevent a tape from being accidentally recorded over, break off the cassette tabs from side A or side B as illustrated.



If you later want to reuse the tape for recording, cover the broken tab with adhesive tape.

### Before placing a cassette in the tape deck

Take up any slack in the tape. Otherwise the tape may get entangled in the tape deck's playing mechanism and become damaged.

### When using a tape longer than 90 minutes

The tape is very elastic. Do not change the tape operations such as play, stop, and fast-winding etc. too frequently. The tape may get entangled in the tape deck's playing mechanism.

### Cleaning the tape heads

Clean the tape heads after every 10 hours of use. Make sure to clean the tape heads before making an important recording or after playing an old tape. Use a commercially available dry-type or wet-type cleaning cassette. For details, refer to the instructions of the cleaning cassette.

### Demagnetizing the tape heads

Demagnetize the tape heads and the metal parts that have contact with the tape after every 20 to 30 hours of use with a commercially available demagnetizing cassette. For details, refer to the instructions of the demagnetizing cassette.

# Specifications

## Amplifier section

For the U.S. model

### AUDIO POWER SPECIFICATIONS

#### POWER OUTPUT AND TOTAL

#### HARMONIC DISTORTION:

With 6-ohm loads, both channels driven, from 70 - 20,000 Hz; rated 18 watts per channel minimum RMS power, with no more than 0.9% total harmonic distortion from 250 milliwatts to rated output.

#### North American model:

Continuous RMS power output (reference):

35 + 35 W  
(6 ohms at 1 kHz, 10% THD)

Total harmonic distortion less than 0.07% (6 ohms at 1 kHz, 18 W)

#### European model:

DIN power output (rated): 30 + 30 W  
(6 ohms at 1 kHz, DIN)

Continuous RMS power output (reference):  
35 + 35 W  
(6 ohms at 1 kHz, 10% THD)

Music power output (reference):  
85 + 85 W

#### Other models:

The following measured at 230 V AC, 60 Hz

DIN power output (rated): 27 + 27 W  
(6 ohms at 1 kHz, DIN)

Continuous RMS power output (reference):  
32 + 32 W  
(6 ohms at 1 kHz, 10% THD)

The following measured at 220 V AC, 60 Hz

DIN power output (rated): 23 + 23 W  
(6 ohms at 1 kHz, DIN)

Continuous RMS power output (reference):  
26 + 26 W  
(6 ohms at 1 kHz, 10% THD)

#### Inputs

AUDIO IN MD (VIDEO) (phono jacks):  
Sensitivity 500/250 mV,  
impedance 47 kilohms

#### Outputs

OPTICAL DIGITAL OUT (CD):

Optical

PHONES:

Accepts headphones with  
an impedance of 8 ohms  
or more

SPEAKER:

6 ohms

## CD player section

System	Compact disc and digital audio system
Laser	Semiconductor laser ( $\lambda = 780$ nm) Emission duration: continuous
Wavelength	780 - 790 nm
Frequency response	2 Hz - 20 kHz ( $\pm 0.5$ dB)

## Tape player section

Recording system	4-track 2-channel stereo
Frequency response	50 - 13,000 Hz ( $\pm 3$ dB), using a Sony TYPE I cassette
Wow and flutter	$\pm 0.15\%$ W. Peak (IEC) 0.1% W. RMS (NAB) $\pm 0.2\%$ W. Peak (DIN)

## Tuner section

FM stereo, FM/AM superheterodyne tuner

### FM tuner section

Tuning range	
North American model:	87.5 - 108.0 MHz (100-kHz step)
Other models:	87.5 - 108.0 MHz (50-kHz step)

Antenna	FM wire antenna
Antenna terminals	75 ohms unbalanced
Intermediate frequency	10.7 MHz

### AM tuner section

Tuning range	
Pan-American model:	530 - 1,710 kHz (with the tuning interval set at 10 kHz)
	531 - 1,710 kHz (with the tuning interval set at 9 kHz)

European model:	531 - 1,602 kHz (with the tuning interval set at 9 kHz)
-----------------	---

Middle Eastern and Philippine models:	531 - 1,602 kHz (with the tuning interval set at 9 kHz)
Other models:	530 - 1,710 kHz (with the tuning interval set at 10 kHz)
	531 - 1,602 kHz (with the tuning interval set at 9 kHz)

Antenna	AM loop antenna, external antenna terminal
Intermediate frequency	450 kHz

## Speakers

Speaker system	Two-way, bass reflex system
Speaker units	11 cm dia., cone type woofer 2.5 cm dia., semi-dome-type tweeter
Rated impedance	6 ohms
Dimensions (w/h/d)	Approx. 154 × 252 × 230 mm
Mass	Approx. 2.5 kg net per speaker

## General

Power requirements	
North American model:	120 V AC, 60 Hz
European model:	230 V AC, 50/60 Hz
Australian model:	230 V AC, 50/60 Hz
Mexican model:	120 V AC, 60 Hz
Other models:	110 - 120 V or 220 - 240 V AC , 50/60 Hz Adjustable with voltage selector

Power consumption	
European model:	See the nameplate 0.5 W (in the standby mode)
Other models:	See the nameplate
Dimensions (w/h/d)	Approx. 190 × 252 × 340 mm incl. projecting parts and controls
Mass	Approx. 5.6 kg
Supplied accessories	Remote commander (1) AM loop antenna (1) FM wire antenna (1) Batteries (2)

Design and specifications are subject to change without notice.

