



OWNER'S MANUAL

MS-1
Music Server

NOTE: Before installing your new component, please read this manual carefully as it will inform you of the product specifications, proper installation and correct operating procedures for your unit. Also included in this manual are guidelines on how to service and care for your new Cary Audio Design product.

TABLE OF CONTENTS

| | |
|---|----|
| Important Safety Instructions | 2 |
| Welcome | |
| Product Overview | 5 |
| Unpacking and Installation | 6 |
| Specifications | 7 |
| Getting Started | |
| Front Panel | 8 |
| Rear Panel | 9 |
| Connecting to Your Home Network | 10 |
| Connecting to Your Audio System | 10 |
| Connecting the Power | 10 |
| Setting Up the Remote Control Device | 11 |
| Connect to Your Wi-Fi Network | 11 |
| Importing Music | |
| From a CD | 12 |
| Using FTP | 12 |
| From External USB Drives | 12 |
| Supported Formats | 12 |
| Operation | |
| Remote Control Device Set Up | 13 |
| Listening To Music | 15 |
| Listening To SHOUTcast™ Radio | 17 |
| Turning Off the Server | 19 |
| Backup and File Management | |
| USB Hard Drive Sync | 20 |
| Web Interface | 21 |
| FTP Interface | 23 |
| Restoration | 24 |
| Troubleshooting | 25 |
| Service and Care | |
| Care and Cleaning | 27 |
| Factory Service | 27 |
| Non-Warranty Repairs | 27 |
| United States Limited Warranty | 28 |
| Legal Notices | 30 |

WELCOME



WARNING: The triangle with the lightning flash symbol displayed on the unit advises the user of dangerous uninsulated voltage inside the product's enclosure.

CAUTION: To reduce the risk of electric shock, do not remove the cover. There are no user-serviceable parts inside; it is recommended that only qualified personnel service this component.

ALERT: The triangle with the exclamation point symbol on the component suggests that the owner refer to important operating and maintenance instructions in the owner's manual.

1. **OWNER'S MANUAL:** Before powering up the equipment, read all safety and operating instructions and follow them as instructed. Retain the safety and operating instructions for future reference.
2. **ATTACHMENTS:** Use only those attachments recommended by the unit manufacturer, as others may cause hazards.
3. **ACCESSORIES:** Do not place the unit on an unstable cart, stand, tripod, bracket, or table. The unit may fall, causing injury to a person or damage to the unit. Mount the unit according to the manufacturer's instructions with the suggested mounting accessory.
4. **WALL OR CEILING MOUNTING:** Mount the unit to a wall or ceiling only in the manner recommended by the manufacturer.
5. **WATER AND MOISTURE:** Do not use the unit near water (for example, near a swimming pool, bath tub, wash bowl, kitchen sink, or laundry tub) or in a damp environment (like a basement or outside in the rain).
6. **OBJECT AND LIQUID ENTRY:** Do not push objects of any kind into the unit through openings as they could touch dangerous voltage points and short-out parts, possibly resulting in a fire or electric shock. Avoid spilling liquid of any kind on the unit. If water or any metal object (such as a paper clip, coin, or staple) accidentally falls inside the unit, disconnect it from the AC power source immediately and contact Cary Audio Design for further instructions.
7. **HEAT:** Position the unit away from heat sources such as radiators, heat registers, stoves, or other units (including amplifiers) that produce heat.
8. **VENTILATION:** Slots and openings in the cabinet create ventilation to protect the component from overheating. These openings on the top and bottom panels must remain unobstructed. Allow at least six inches (16 cm.) of clearance above the unit and an opening behind the unit for airflow. Do not place the unit on a bed, sofa, rug, built-in bookcase, or rack without adequate ventilation.
9. **GROUNDING OR POLARIZATION:** As a safety feature, the unit may be equipped with a polarized alternating current line plug in which one blade is wider than the other. This plug will fit into the power outlet only one way. If you cannot insert the plug fully into the outlet, try reversing the plug. If the plug still will not fit, contact a licensed electrician to update your obsolete outlet. Do not defeat the safety purpose of the polarized plug.
10. **POWER SOURCES:** Operate the unit only from the power source indicated on the marking label. If you are unsure of the type of power supplied to your home, consult your unit dealer or local power company.
11. **POWER CORD PROTECTION:** Arrange power supply cords so that they do not suffer from foot traffic or pinching by items placed on or against them. Pay close attention to cords where plugs enter the AC outlet and where they exit from the unit.
12. **LIGHTNING:** For added protection during a lightning storm or when the component is idle for long periods of time, unplug the unit from the wall outlet and disconnect the antenna or cable system. This will help protect the unit from lightning and power line surge damage.
13. **POWER LINES:** Do not locate an outside antenna system in the vicinity of overhead power lines or other electric light or power circuits. When installing an outside antenna system, take extreme care to avoid touching the power lines or circuits; contact with them could be fatal.
14. **OVERLOADING:** Do not overload wall outlets, extension cords, or integral convenience receptacles as this increases the risk of fire or electric shock.

WELCOME

15. **REPLACEMENT PARTS:** When replacement parts are required, be sure the service technician has used replacement parts specified by the manufacturer or those having the same characteristics as the original parts. Unauthorized substitutions may result in fire, electric shock or other hazards.
16. **SAFETY CHECK:** Upon completion of any service or repairs to the unit, ask the service technician to perform safety checks to ensure the unit is in proper operating condition.
17. **IMPORTANT SAFETY NOTE:**
 - Before connecting a new product such as the Cary Audio Design MS-1 to your audio or home theater system, turn off all other equipment (preferably unplugging them from the AC power source). Many audio components feature automatic turn-on circuits that may activate during an installation, potentially causing damage to electronic components or speakers. This type of damage is not covered by product warranties, and Cary Audio Design specifically disclaims responsibility for any such damage.
 - **Power Cord:** The removable power cord provided with your player was specifically designed for use with this product, but other AC cords may be used. Consult your dealer for advice on AC power cords and high quality wire in your system.
 - **AC Fuse:** The fuse is located inside the chassis and is not user serviceable. If the unit does not power up, contact an authorized service representative.
 - **Wiring:** Cables running inside walls should have the appropriate markings to indicate compliance and listing by the UL, CSA or other standards required by the UL, CSA, NEC, or your local building code. Questions about cables inside of walls should be directed to a qualified custom installer, licensed electrician, or low-voltage contractor.
18. **RECORDING COPYRIGHT:** Recording of copyrighted material for other than personal use is illegal without permission of the copyright holder.
19. **NOTE TO CATV SYSTEM INSTALLER:** This reminder is provided to call the CATV system installer's attention to article 820-40 of the NEC, ANSI/NFPA 70, which provides guidelines for proper grounding and, in particular, specifies that the cable ground shall be connected to the grounding system of the building as close to the point of cable entry as practical.
20. **FCC INFORMATION FOR USER:**

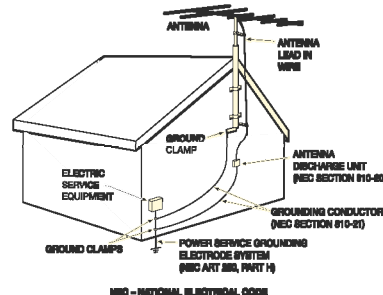


- **CAUTION:** Any changes or modifications not expressly approved by Cary Audio Design could void the user's authority to operate the equipment.
- **NOTE:** This equipment has been tested and found to comply with the limits for a Class B digital device pursuant to Part 15 of the FCC Rules.
- These limits are designed to provide reasonable protection against harmful interference in a residential installation. This equipment generates and can radiate radio frequency energy, and if not installed and used in accordance with the instructions it may cause harmful interference to radio communications. However, there is no guarantee that interference will not occur in a particular installation. If this equipment does cause harmful interference to radio or television reception, which can be determined by turning the equipment off and on, the user is encouraged to try to correct the interference by one or more of the following measures:
 - Reorient or relocate the receiving antenna.
 - Increase the separation between the equipment and receiver.
 - Connect the equipment into an outlet on a circuit different from where the receiver is connected.



21. OUTDOOR ANTENNA INSTALLATION/SAFE ANTENNA AND CABLE CONNECTION:

- If an outside antenna or cable system is connected to the equipment, be sure the antenna or cable system is grounded in order to provide protection against built-up static charges and voltage surges. Article 810 of the National Electrical Code, ANSI/NFPA 70 (in Canada, Part 1 of the Canadian Electrical Code) provides information regarding proper grounding of the mast and supporting structure, grounding of the lead-in wire to an antenna discharge unit, size of grounding conductors, location of antenna discharge unit, connection to grounding electrodes and requirements for the grounding electrode.



outside antenna system should be located well away from power lines, electric light or power circuits and where it will never come into contact with these power sources if it should happen to fall. When installing an outside antenna, take extreme care to avoid touching power lines, circuits and other power sources as this could be fatal. Because of the hazards involved, antenna installation should be left to a professional.

WELCOME

PRODUCT OVERVIEW

Thank you for purchasing the latest design in a long line of outstanding digital source equipment from Cary Audio Design. By choosing a hard drive-based music server, you now belong to an elite group of audiophiles who have transitioned from a single play disc-based system to a system that provides easy access to all of your music in one central location. If you are like many of us at Cary, the easy and convenient operation of the MS-1 will entice you to listen to your music collection more often, and you'll soon be rediscovering long-forgotten favorites.

The MS-1 is a new breed of audio component designed to use an iPhone, iPod Touch, or iPad as its remote control device. With an Internet connection and wireless router, the MS-1 is controlled almost entirely by the remote control device. Enjoy the simplicity of fingertip commands along with the vivid color displays of album cover art.

To begin your musical experience, just insert a CD, and the MS-1 will copy the disc to the one-terabyte hard drive, which is capable of storing roughly 2,800 CDs in FLAC format; the disc ejects automatically when the transfer is complete. The MS-1 then searches Internet archives for the song list, artist information, and album art. Once the information is added to the music library, your music becomes searchable using your iPhone, iPod Touch, or iPad as a remote control device. An extremely efficient and fast internal operating system quickly locates and plays your music at the highest level of quality over a USB output.

Downloading the custom Cary Audio Design MS-1 application available free from the iTunes App Store gives you complete wireless control of the MS-1 and its database. Simply launch the Cary Audio Design application, and you can begin exploring your entire music library with the swipe of a finger. With a few simple screen touches, you can search your entire music collection by artist, album, song or genre. Never before has your music library been this easy to enjoy. SHOUTcast™ Radio is also included as part of the MS-1, enabling you to stream thousands of Internet radio stations.

The MS-1 is the modern day equivalent of a high-end audio transport and is designed to be paired with a USB D/A converter. To achieve the best in high-end sound, we suggest that the MS-1 be paired with the Xciter Series USB D/A converter. This combination of Cary products provides you with a system whose ease of use and sound quality is difficult to match at any price.

Congratulations on your fine choice, the Cary Audio Design MS-1. We are confident the MS-1 will bring you many years of musical satisfaction, and we sincerely welcome you to the Cary family.

CARY
Audio Design

1020 Goodworth Drive
Apex, NC 27539
Phone 919.355.0010
Fax 919.355.0013
www.caryaudio.com

WELCOME

UNPACKING AND INSTALLATION

Unpacking

Your Cary Audio Design product was shipped in a carton particularly designed to protect its contents, and special care has been taken to prevent damage during shipping. Carefully remove your new component from its packing carton and examine it closely for signs of shipping damage. If shipping damage is discovered, document the damage with photographs, contact the transport carrier immediately, and retain the packing as evidence.

We strongly recommend saving all original packing cartons to protect your component for storage or future shipping.

Included in the Box

When unpacking your MS-1 Music Server, make sure the following is included:

- MS-1 Music Server
- RESTORE DVD
- Power Supply
- Owner's Manual
- Warranty Card

Power Requirement

The MS-1 is designed to operate from AC mains current. The auto-switching adapter will operate between 100 volts AC and 240v AC at 50-60 Hz.

Warranty Card

If you are the original purchaser of this unit and you purchased it in the United States, complete the enclosed warranty registration card and return it to Cary Audio Design within fifteen days of your purchase. Warranty restrictions apply. Consult the warranty section of this manual for details. Please keep a copy of the original sales receipt from your Authorized Cary Audio Design dealer to validate the warranty if necessary.

SPECIFICATIONS

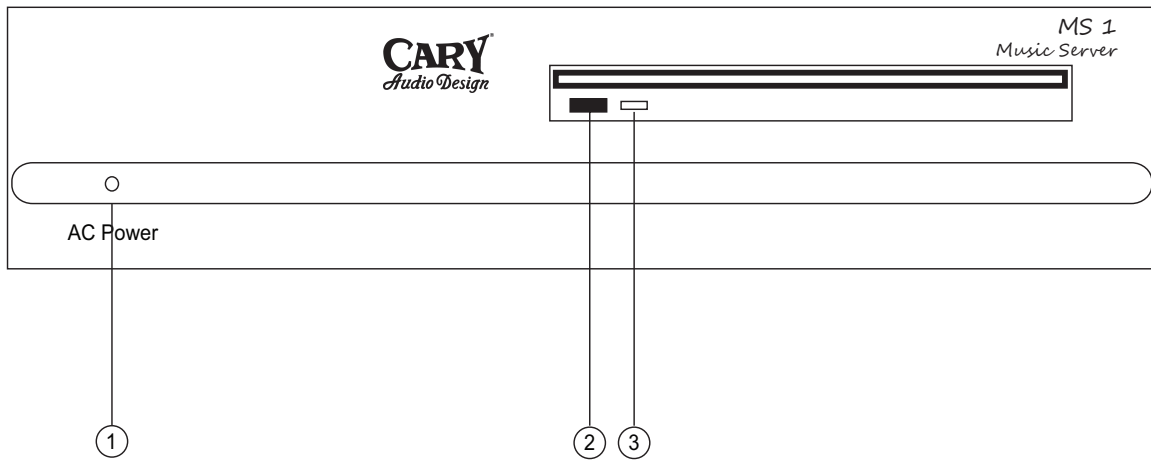
Operating the MS-1 is a simple procedure since each unit is designed for long-term stability in virtually any home operating situation. However, if the unit is operated outside the parameters outlined in this owner's manual, damage may occur. Please read this manual carefully before operating your new MS-1.

GENERAL SPECIFICATIONS

| | |
|--------------------------------|---|
| Hard Drive | 1 terabyte SATA |
| Optical Drive | 24x slot loading drive |
| Audio Output | via USB 2.0 ports on rear panel |
| Network Connection | 10/100/1000 Ethernet |
| Music Formats Supported | FLAC, OGG, WAV, M4A, WV |
| Digital Output Rate | 24 bit 96 kHz max |
| Power Input | 100-240 VAC, 50-60 Hz, auto switching |
| Power Consumption | ~30 watts |
| Finish | Black matte cabinet, silver anodized-aluminum faceplate standard (black optional) |
| Weight | 8 lbs |
| Dimensions | 3.5H x 11W x 12.5D |

GETTING STARTED

FRONT PANEL OVERVIEW



1. AC POWER

A blue LED will illuminate when the power is on.

2. DISC EJECT

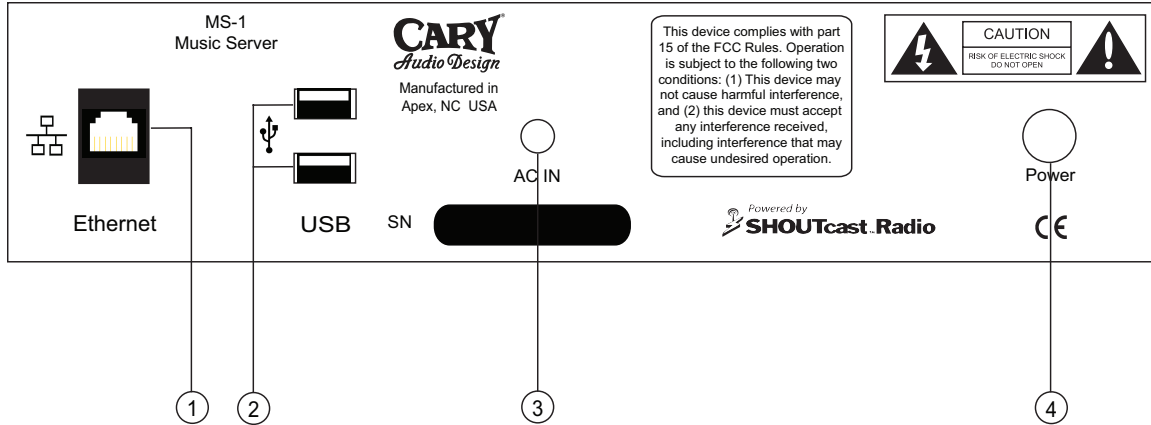
Pressing this button ejects the disc from the MS-1.

3. DISC ACTIVITY LIGHT

This light will blink while a CD is being imported.

GETTING STARTED

REAR PANEL OVERVIEW



1. ETHERNET

Connect to your network using this 10/100/1000 Ethernet jack

2. USB

Two USB ports are provided to connect both a DAC and an external hard drive.

3. AC IN

Plug in the power supply here.

4. POWER

Press once to turn on.

Press once more to shut down the MS-1.

The blue LED on the front of the MS-1 will illuminate when AC power is on.

GETTING STARTED

CONNECTING TO YOUR HOME NETWORK

The MS-1 system will need both wireless and wired access to your home network. The wired access is required to establish the MS-1 music server connection while the wireless connection allows your iPhone, iPod Touch, or iPad to interface with the MS-1 as a remote control device.

Simply plug the MS-1 into your router with a standard CAT5 Ethernet cable. From there, the MS-1 will obtain its IP address automatically from the router and connect to your home network.

If there is no wired Ethernet network in your home, use a power line network adapter such as those made by Linksys, Netgear, and Belkin. This adapter will send your data over home power lines at speeds similar to a wired Ethernet network. This adapter is usually sold as a two-part device; connect one part to your router and the other to your MS-1 server.

Except when accessing SHOUTcast™ Radio, the MS-1 plays music without an Internet connection; however, it requires an Internet connection to retrieve information about CDs while they are importing to the MS-1 library.

If you have turned off the DHCP server in your router, the MS-1 cannot obtain an IP address. At this time, the MS-1 does not support the use of proxy servers.

CONNECTING TO YOUR AUDIO SYSTEM

The MS-1 will send audio to a DAC via USB. Simply connect a USB cable from the USB port on the rear of the MS-1 to your USB DAC.

The MS-1 is compatible with any USB DAC supporting the Universal Serial Bus Device Class Definition for Audio Devices v1.0. The MS-1 will not work with DACs requiring special drivers.

CONNECTING THE POWER

Plug in the MS-1 power adapter to the back of the unit, then plug the other end into the wall. Press the power button on the rear of the chassis, and the front LED will illuminate as the server begins its start-up sequence. The server will be ready to use in less than a minute.

GETTING STARTED

SETTING UP THE REMOTE CONTROL DEVICE

An iPhone, iPod Touch, or iPad is required to control the MS-1 system. The latest version of the Cary Audio Design MS-1 Remote App is available through iTunes free of charge; choose one of these two methods:

- From your computer, go to the iTunes App Store and search for CARY AUDIO.
- From your iPhone, iPod Touch, or iPad, access the iTunes App Store and search for CARY AUDIO.

CONNECT TO YOUR WI-FI NETWORK

If your iPhone, iPod Touch, or iPad already connects to the web using your Wi-Fi network, skip this step. If not, go to your remote control device's **SETTINGS** → **WI-FI** menu.



IMPORTING MUSIC

FROM A CD

Place the CD in the slot-loading CD drive, and the MS-1 automatically copies the CD to the internal storage. With an established Internet connection, the MS-1 will retrieve CD information such as album, artist, genre, and track names. The CD will eject when the import is complete. CDs are copied into FLAC format; this is a lossless audio storage format.

USING FTP

File Transfer Protocol (FTP) is a standard network protocol used to exchange files over a network. The MS-1 features a built-in FTP server to upload an existing collection of digital music files. Refer to the BACKUP AND FILE MANAGEMENT section for more information.

FROM EXTERNAL USB DRIVES

To import music files from USB hard drives and USB thumb drives, refer to the USB HARD DRIVE SYNC section.

SUPPORTED FORMATS

The MS-1 will play the following formats:

- FLAC – Free Lossless Audio Codec
- OGG – Ogg Vorbis
- WAV – WAVE
- M4A – Apple Lossless
- WV – WavPack

Files without metadata (such as WAV files) must be played through the SOURCES → FILE SYSTEM menu. They will not show up in the Albums / Artists / Genres / Songs tabs.

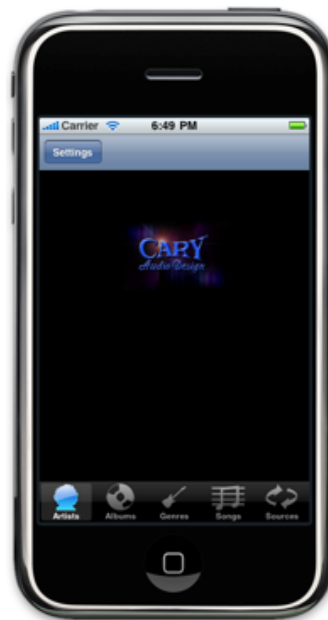
Any files with DRM (Digital Rights Management) are not compatible with the MS-1.

OPERATION

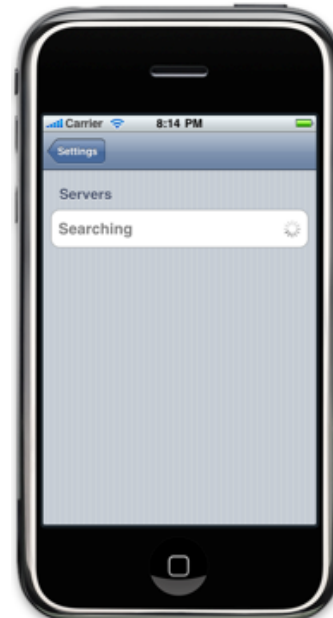
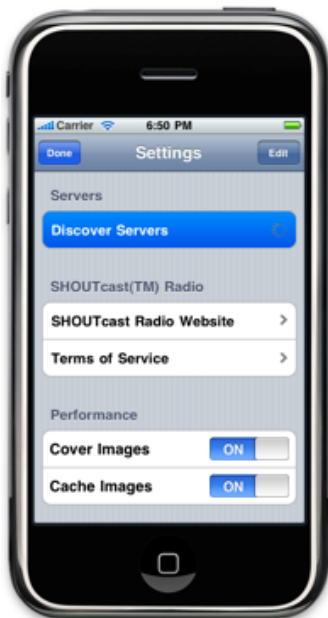
REMOTE CONTROL DEVICE SET UP

Select the CARY AUDIO Application on your iPhone, iPod Touch, or iPad.

- Press the SETTINGS button in the top left corner.



- Select DISCOVER SERVERS, and the remote control device will search your network for servers.



OPERATION

Select your server when it is identified.



- When a checkmark appears beside the server name, press DONE in the top left corner.



OPERATION

LISTENING TO MUSIC

You can now browse the music library and start listening. Use the bar on the right side of the remote control device screen to jump to a specific letter in the list.

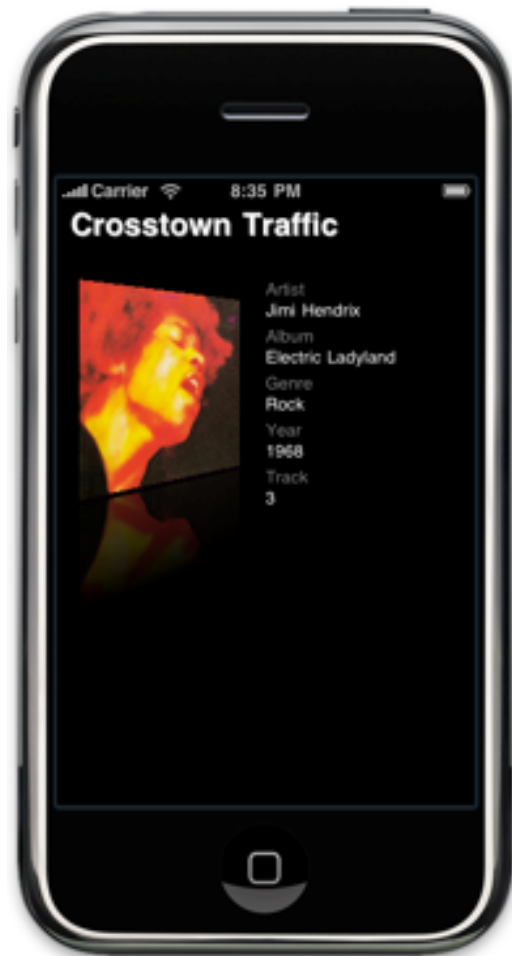


If it is available, album art will display on the NOW PLAYING screen. Use the volume slider to control the listening level of the audio sent to your DAC. Keep this digital volume control at 100% for critical listening.



OPERATION

Press the INFO button in the bottom right hand corner to view more information about the track currently playing. Tap the screen again to go back to the NOW PLAYING screen.



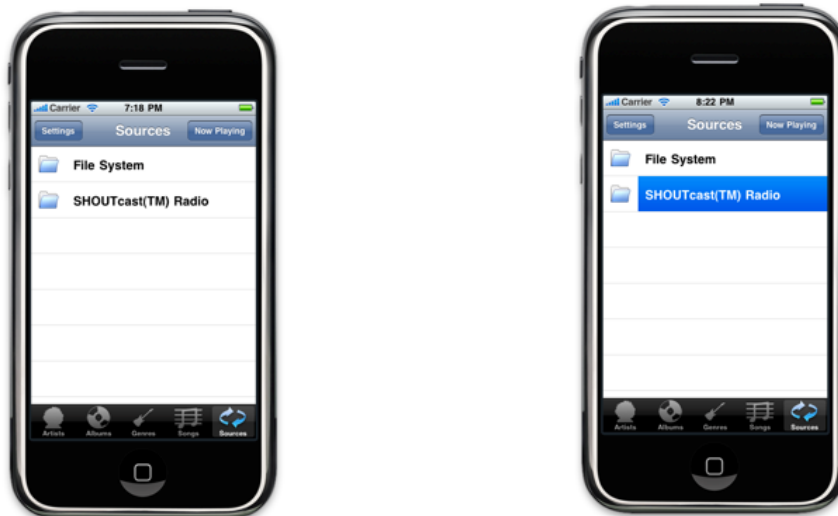
OPERATION

LISTENING TO SHOUTCAST™ RADIO

SHOUTcast™ Radio is one of the world's largest online radio stations. Currently, SHOUTcast™ Radio features over 35,000 stations from around the globe. Whether you are looking for popular or indie music or want to check out local or world programming, you're sure to find something you like on SHOUTcast™ Radio.



To access SHOUTcast™ Radio content, go to the SOURCES tab and select SHOUTcast™ Radio.



A listing of genres will appear. Use the bar on the right side to jump to a specific letters in the list.

OPERATION



After selecting a genre, choose a particular station.



OPERATION

The NOW PLAYING screen will appear.



TURNING OFF THE SERVER

To protect both your music library contents and MS-1 system files, a proper shut down is recommended. Press and release the MS-1 power button to initiate shutdown of the system.

If the server will not respond to the remote or will not turn off with a single power button press, a “hard reset” is in order. This is performed by holding the power button down for approximately five seconds. Avoid a “hard reset” unless you cannot get a response from the remote or a single press of the power button will not turn the MS-1 off. A hard reset is necessary after a software update/restore. Hold the power button down to shut the unit off after the software update disc has ejected..

BACKING UP AND FILE MANAGEMENT

Backup music from the MS-1 using either an external USB hard drive or the FTP server. Delete music from the MS-1 with either the FTP server or web interface.

USB HARD DRIVE SYNC

The MS-1 automatically syncs music with an external USB drive providing two functions: to import new music to the MS-1 and to backup music from the MS-1.

The MS-1 compares the files on a connected external drive to those on the MS-1 and copies any new and updated files onto the MS-1. Additionally, if the external drive has more than 300 GB in size, new and updated files from the MS-1 to the external USB drive.

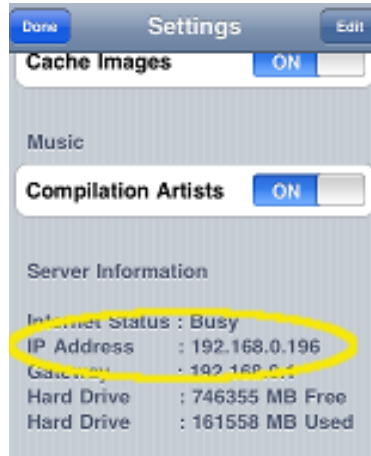
Because the speeds of USB drives vary, it is recommend that the USB remain connected for an extended period of time to ensure that the backup process completes, ideally overnight. Before removing the USB drive, power down the MS-1.

For backups, we recommend that you purchase an NTFS-formatted drive free of any built-in backup software designed for a specific operating system. Drives with automatic backup software programs similar to Western Digital's WD SmartWare are not supported. The drive capacity needs to be equal to or greater than the MS-1 internal storage capacity. Two recommended USB drives are the Iomega Prestige 1.0 TB USB 2.0 and the Western Digital WD Elements 1.0 TB USB 2.

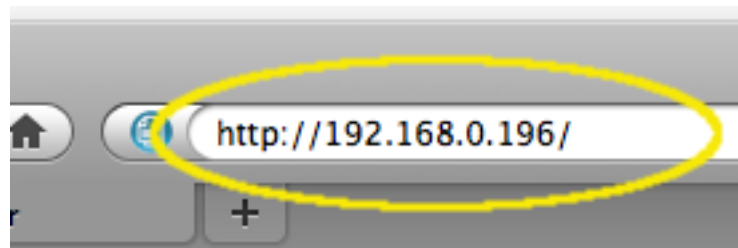
BACKING UP AND FILE MANAGEMENT

WEB INTERFACE

Use the web interface to access and delete files on your MS-1. To connect, determine your server's IP Address from the SETTINGS menu on your remote control device.



Enter the IP Address into your web browser as shown below.

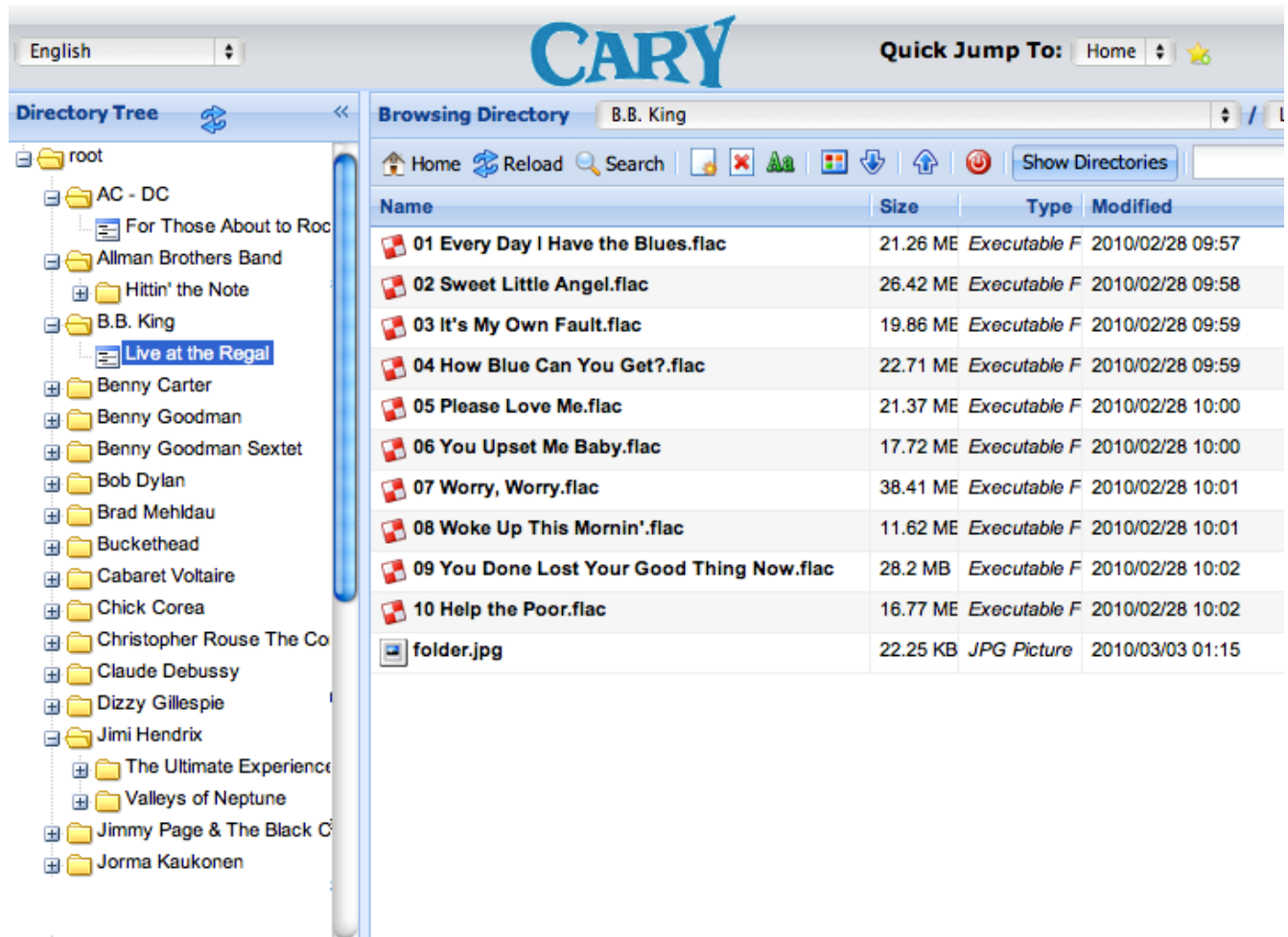


When the LOGIN SCREEN appears, enter the word *music* (all lowercase) for both the username and password.

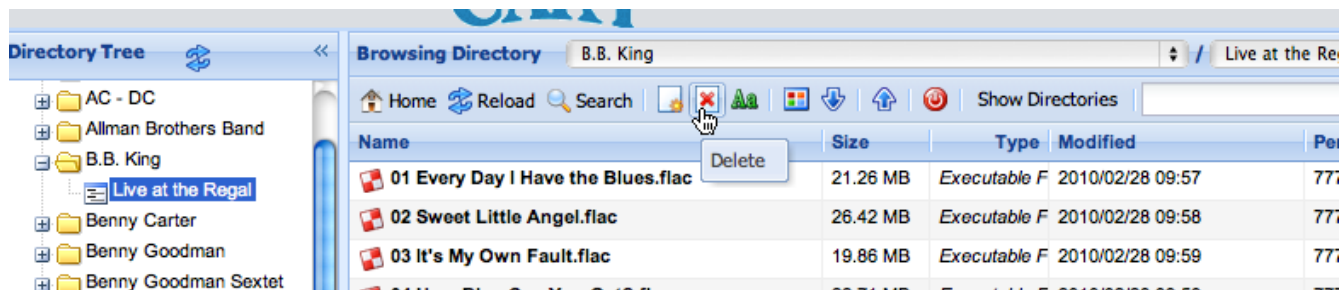
A screenshot of the CARY login screen. At the top, the word 'CARY' is written in a blue, stylized font. Below it is a 'Login' form with three input fields: 'Username:' containing 'music', 'Password:' containing six asterisks, and 'Language:' with a dropdown menu set to 'English'. At the bottom of the form are two buttons: 'Login' and 'Reset'.

BACKING UP AND FILE MANAGEMENT

After logging in, you will be able to browse through the MS-1 file system.



Highlight unwanted files and folders, then use the DELETE button to remove them.



BACKING UP AND FILE MANAGEMENT

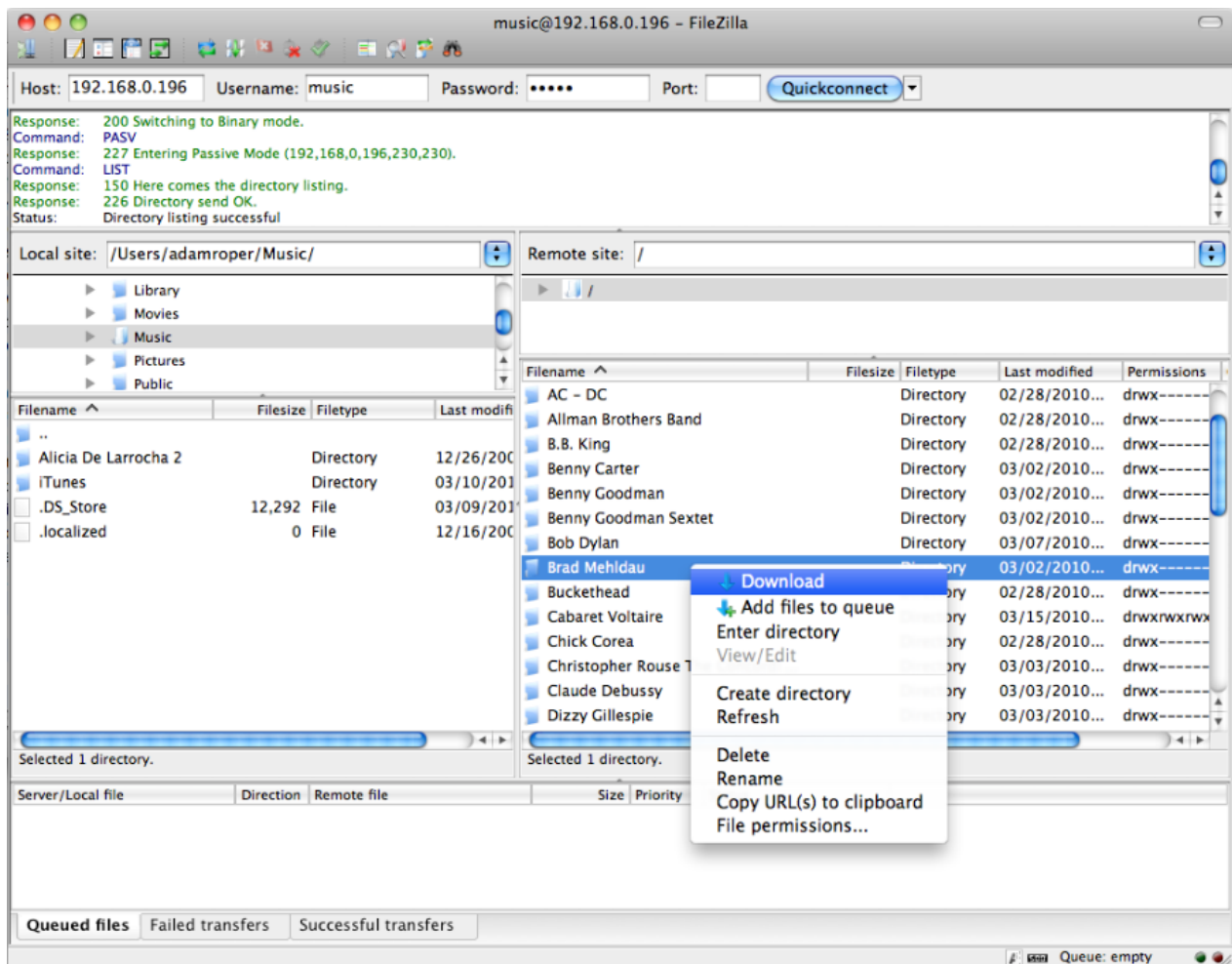
FTP INTERFACE

Use your favorite FTP client to access the FTP server in the following manner:

- Host IP Address: obtain from the SETTINGS menu on the remote control device.
- Port: 21
- Username: music
- Password: music

If you do not have an FTP client installed on your computer, download FileZilla at <http://filezilla-project.org/>. The program is free and runs on Windows, Mac OS X, and Linux.

Once the FTP connection is established, the local file system will display on one side of the screen while the MS-1 file system displays on the other. From this computer page, you can upload, download, and delete files from the MS-1.



RESTORATION

RESTORATION

The RESTORE DVD reverts the MS-1 system software back to factory settings while leaving the music collection intact. This feature will give the MS-1 a new, clean database. It will rescan the music collection and regenerate thumbnails from the folder.jpg files (if any) inside the album directories.

If you manually edit tags, download and change cover art, or rename folders, use the RESTORE DVD to import the changes into a new, clean database.

It is possible to experience file system corruption from a power outage or hard reset. Use the RESTORE DVD if you begin to experience problems with your MS-1. It will erase and reinstall the system files while repairing issues associated with corrupted system files.

Please note that it will take some time to rescan a music collection, particularly a large one, so allow ample time; overnight is best.

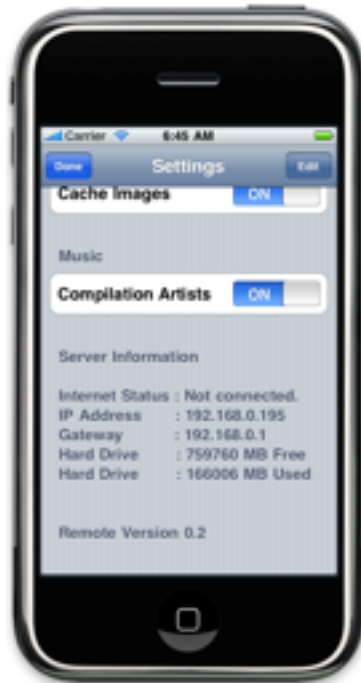
To use the RESTORE DVD, follow these steps:

- Power down the MS-1.
- Turn the MS-1 back on, then insert the RESTORE DVD. After the process is completed (approximately ten minutes), the RESTORE DVD will eject.
- Once the DVD ejects, hold down the power button until the MS-1 turns off. Because the file system is not in use, it is acceptable to do a hard reset.
- Power up the MS-1, and it will rescan the music collection.

TROUBLESHOOTING

SHOUTCAST™ RADIO DOESN'T WORK

If you can connect to your MS-1 but SHOUTcast™ Radio does not work, check the INTERNET STATUS of MS-1 in the SETTINGS menu.



The server information data is created when the remote control device initially connects to the server. The optimal time to check the INTERNET STATUS is immediately after booting up the MS-1; however, you can refresh the server information data by exiting the application and reconnecting to the MS-1.

If the INTERNET STATUS reads *Connected*, there is no problem accessing the Internet. If the INTERNET STATUS reads *Not Connected*, make sure the Internet connection is working properly. If it reads *Busy*, the remote is unable to determine the Internet connection status; however, the device will still function properly.

UNKNOWN ARTIST AND UNKNOWN ALBUM DISPLAY

When the MS-1 cannot retrieve the necessary metadata from the Internet to tag the album, UNKNOWN ARTIST and UNKNOWN ALBUM will display with a music file. There are two possible solutions:

- Determine whether the MS-1 can successfully access the Internet; refer to the section above for instructions. Establishing an Internet connection may solve the problem.

TROUBLESHOOTING

- The MS-1 uses two services to retrieve metadata--MusicBrainz and FreeDB. If neither service can identify an album, the music files will still transfer to the MS-1 but will be tagged as UNKNOWN ARTIST and UNKNOWN ALBUM. Using the FTP server or the USB HARD DRIVE SYNC, copy the album to your computer, manually tag the album using a tag editor, and copy it back to the MS-1.

MUSIC COPIED TO THE MS-1 IS NOT VISIBLE ON THE REMOTE CONTROL DEVICE

The MS-1 refreshes its music library every five minutes. It searches for new music to add to the MS-1 library. Music must have metadata tags to be scanned to the library and be accessible via the Albums / Artists / Genres / Songs tabs. If files are not tagged, they will be accessed only through the SOURCES → FILE SYSTEM menu.

Since WAV files do not have tagging capabilities, they cannot be accessed through the Albums / Artists / Genres / Songs tabs. They can be accessed only through the SOURCES → FILE SYSTEM menu.

REMOTE CONTROL DEVICE LOST CONNECTION WITH THE MS-1 AND CANNOT RECONNECT

Ensure that your iPhone, iPod Touch, or iPad is connected to the correct Wi-Fi access point. If it is not connected, correcting that issue may solve the problem. If it is properly connected, power down the MS-1 by pressing and releasing the power button and waiting for it to shut down. Then, turn the MS-1 back on and try to reconnect to the MS-1.

DUPLICATE SONGS

It is possible to encounter duplicate song files. When browsing the songs on an album, there may be two or more listings for a particular song. Importing a music file to the server when it was already there is the most common cause. Use the WEB interface to locate and delete the duplicates. Occasionally, an album may be placed not only in the correct Artist folder but also in the Various Artists folder. Deleting one copy of the songs will remedy the problem.

If the duplicates exist on a backup drive, remove them from that drive as well; otherwise, they will copy back to the MS-1 the next time it connects to the backup drive.

SERVICE AND CARE

CARE AND CLEANING

Unplug the unit from the wall outlet. Clean the cabinet housing and front panel of the MS-1 with a soft cloth and a glass cleaner. The frequency of cleaning will vary based on the cleanliness of the environment and the number of hours the MS-1 is operated.

FACTORY SERVICE

Careful consideration has been given to the design of the MS-1 to minimize maintenance issues. Any problems or requests for service should be referred to the Customer Service Department at 919.355.0010. Do not return the MS-1 to the factory without a return authorization number (RA). Refer to the next section for details about returning equipment to Cary Audio Design.

Should the unit be lost or damaged in shipment, Cary Audio Design will assume no responsibility if the shipping company refuses to pay for damage due to improper packing or lack of insurance. Please use the original carton for shipping the music server.

NON-WARRANTY REPAIRS

Cary Audio Design will provide repair service for its products charging on a time and expense basis. Please call Cary Audio Design at 919.355.0010 for more information about out-of-warranty service and repair fees.

UNITED STATES LIMITED WARRANTY

Cary Audio Design warrants to the original United States purchaser for use in the United States that Cary Audio Design vacuum tube or solid-state power amplifiers surround sound processors, preamplifiers, or music servers shall be free from defects in parts or workmanship for three years from the date of the original purchase. Vacuum tubes, if any are used in the component, are offered a 90-day (from purchase date) exchange policy against defects with the exception of the CAVT 300B vacuum tube that has a one-year (from purchase date) exchange policy. Any digital drive design, whether a Cary Audio Design CD or SACD player, Cary Cinema DVD player, or Cary Music Server has a limited one-year parts and labor warranty against defects in manufacturing. This is a limited warranty offered only to the original purchaser and does not transfer.

During the limited warranty period, Cary Audio Design or an authorized Cary Audio Design service facility will provide free of charge both parts and labor necessary to correct any defects in material or workmanship.

To obtain such warranty service, the original purchaser must complete and send in the Warranty Registration Card within 15 days of purchase.

WARRANTY DISCLAIMER

Except for the express warranties stated herein, Cary Audio Design disclaims all other warranties including, without limitation, all implied warranties of merchantability and fitness for a particular purpose. The foregoing constitutes Cary Audio Design's entire obligation with respect to this product, and the original purchaser and any user or owner shall have no other claim for incidental or consequential damages. Some states do not allow the exclusion or limitation of incidental or consequential damages, so the above limitation and exclusion may not apply to you. This warranty gives legal rights and you may also have other rights, which vary from state to state.

Proper maintenance, repair and use are important to obtain performance from this product. Therefore, please carefully read the Operating Manual. This warranty does not apply to any defect that Cary Audio Design in its sole discretion determines was caused by any of the following:

- Improper maintenance or repair, including the installation of parts or accessories not conforming to the quality and the specifications of the original parts
- Misuse, abuse, neglect or improper installation
- Accidental or incidental damage

EXCLUSIVE REMEDY

Notwithstanding the foregoing, the purchaser's exclusive remedy for any breach of warranty, express or implied, is limited to the repair or replacement of the defective unit or the refund of the purchase price, at the option of Cary Audio Design. Under no circumstances is Cary Audio Design liable for incidental or consequential damages. Any implied warranties imposed by law terminate one year from the date of purchase.

UNITED STATES LIMITED WARRANTY

INTERNATIONAL PURCHASERS (EXPORT MARKETS)\

Cary Audio Design warrants its merchandise to purchasers within the United States exclusively for use within the United States of America. It provides no other warranties, expressed or implied. If you are living outside the USA, please consult your local dealer or distributor to determine the details of your local warranty.

SHIPPING INSTRUCTIONS

In the event that the owner needs to return the unit to Cary Audio Design for service or repair of a possible defect, he must follow these steps:

1. Contact Cary Audio Design at 919.355.0010 to obtain a Return Authorization (RA) number prior to shipping; include this number with the package.
2. Submit a copy of the original sales receipt; a blank receipt will not validate the limited warranty for service by Cary Audio Design. The original sales receipt must contain the following information:
 - the authorized Cary Audio Design dealer's name
 - the date of purchase
 - the sales price
 - the buyer's name and address
3. Describe the problem in detail.
4. Note the unit model number and serial number.
5. Deliver by either of these methods:
 - a. With all freight and insurance charges prepaid and in its original packing container or equivalent, ship the component to
Cary Audio Design
1020 Goodworth Drive
Apex, North Carolina 27539
 - b. Hand-deliver the product to Cary Audio Design (address noted above) or the nearest authorized service facility.



Cary Audio Design

1020 Goodworth Drive
Apex, NC 27539
Phone 919.355.0010
Fax 919.355.0013
www.caryaudio.com

LEGAL NOTICES

DATA LOSS

Cary Audio is not liable for data stored on the MS-1. As with any hard drive, failure can destroy data or render it inaccessible. For this reason, we provide a backup scheme to copy your files to an external data storage device. Always keep your original music discs and backup in a safe location.

MANUAL

Because the software for the MS-1 and the Cary Audio app can be updated, the images and screen captures used on this manual may not be current. Check www.caryaudio.com for the latest software updates and manual revisions.

TRADEMARKS

The Cary Audio Design logo and name are trademarks of Cary Audio Design.

iPhone, iPod Touch, and iPad are trademarks of Apple Inc., registered in the United States and other countries.

SHOUTcast™ Radio and the SHOUTcast™ Radio logo are trademarks of Nullsoft, Inc.

INTELLECTUAL PROPERTY

Cary Audio Design is all about music. This pertains to not only the products we make but also the artists who create the music. These artists deserve to be paid for their hard work. For this reason, we strongly recommend loading your MS-1 only with music CDs that you own. Music is intellectual property and is subject to worldwide copyright protection.

SOFTWARE

This product contains Linux which is made available under the GNU GPL license version 2. Upon request, Cary Audio Design will deliver or make available (for a charge no more than the cost of physically performing source distribution) a complete machine-readable copy of the corresponding source code used in the MS-1 on a medium customarily used for software interchange. This offer is valid for a period of three years after the date of purchase of this product.

Notes

Notes

Notes

CARY AUDIO DESIGN

1020 Goodworth Drive, Apex, NC 27539
phone 919-355-0010
fax 919-355-0013
www.caryaudio.com

