



Wireless
**Digital Media
Player**

User Manual

Table of Contents

1	Introduction	1
	Package Contents	1
	Minimum System Requirements	1
	Player Features	2
	Technical Support	5
2	Setting Up the Player	7
	Connecting the Player to a Television/Stereo	7
	Installing the Actiontec Media Buddy	12
	Setting up the Wireless Connection	15
	Setting Up the Media Buddy	18
	Redirecting the Media Buddy	20
3	Using the Media Buddy	23
	Home	23
	Menu	26
4	Playing Digital Media	33
	Remote Control	33
	Login Screen	37
	Accessing Media Files	41
	Actiontec Link	49
	Options Bar	49
5	Troubleshooting and Frequently Asked Questions	57
A	Specifications	59
	General	59
	Wireless	60
	Environmental	60
B	Setting Up the Player via Ethernet	61
	Connecting to a Wired Network	61
	Connecting to a Single Computer	61
	Notices	63
	Regulatory Compliance Notices	63
	Modifications	63
	Limited Warranty	65

Introduction

1

Thank you for purchasing the *Actiontec* Digital Media Player. The Digital Media Player is the simplest way to connect your computer to your home entertainment system, creating a central location to store all of your digital music, movies, and photos. Using your television as a monitor, you can play all of your digital entertainment with just a few clicks of the Player's Remote Control. You can even surf the Web from the comfort of your couch. If you want to organize and instantly access your digital movies, photos, and music, the *Actiontec* Digital Media Player is the right product for you.

Package Contents

- ♦ *Actiontec* Digital Media Player
- ♦ Power Cord
- ♦ RCA Cable
- ♦ S-Video Cable
- ♦ 11 Mbps Wireless PC Card
- ♦ Installation CD (includes User Manual)
- ♦ Quick start guide
- ♦ Remote control

Minimum System Requirements

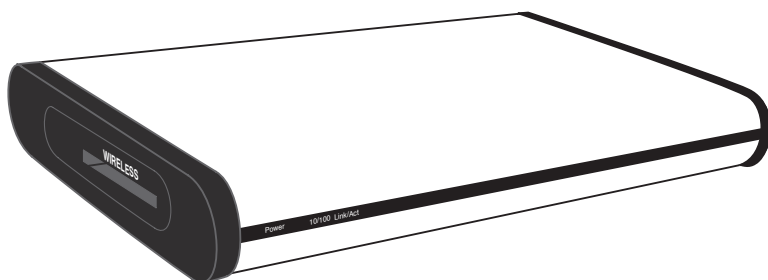
- ♦ Television with composite video input
- ♦ Stereo or A/C receiver with RCA audio input
- ♦ Computer equipped with 300 Mhz Pentium II or higher (700 Mhz or higher for video playback), TCP/IP installed, and 60 Mb of hard drive space available
- ♦ Windows 98 Second Edition (SE), Millennium Edition (Me), 2000, or XP

Player Features

The Player has a series of informational LEDs (lights) on its front panel, and a variety of ports on its rear panel. It is recommended that the user become familiar with these features before installing or setting up the Player.

Front Panel

There are 3 LEDs (light emitting diodes) on the front panel of the Player, as shown in the figure, below.



Power

The Power LED illuminates when power is supplied to the Player.

10/100

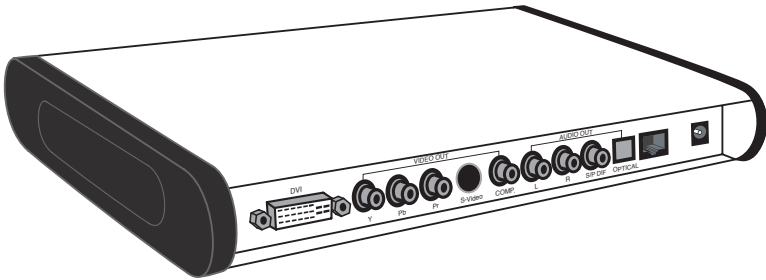
The 10/100 LED illuminates when the Player is connected to a computer via an Ethernet cable.

Link/Act

The Link/Act LED illuminates when the Player is connected via Ethernet cable to a computer. The LED flickers when the connection is active (i.e., data is passing from the computer to the Player).

Rear Panel

The Player has 12 ports on its rear panel, as shown in the figure below.



DVI Port

The DVI (Digital Visual Interface) port is used to connect the Player to a DVI-compatible high-definition television (HDTV).

Y, Pb, Pr Ports

These three ports are used to connect the Player to monitors or televisions requiring component video input.

S-Video Port

The S-Video port is used to connect the Player to a television or monitor using an S-Video cable.

COMP Port

The yellow COMP port is used to connect to a television's composite input port using an RCA video cable.

Audio Out L and R

These two ports (L is red, R is white) are used to connect to the television or stereo audio input ports, using RCA audio cables.

S/P Dif, Optical Ports

The S/P Dif (Sony/Philips Digital Interface) port is used to connect the Player to a compatible S/P Dif audio receiver. The S/P Dif uses an RCA cable to connect, while the Optical port uses an optical cable.

Ethernet Port

The Ethernet port is used to connect the Player to a computer or hub/router using a crossover Ethernet cable. A crossover Ethernet cable must be used to connect the Player to a computer. A standard, straight-through Ethernet cable will not connect the Player to a computer.

Power Port

The Power port is used to connect the Player to a standard electrical outlet using the included Power cord.

Side Panel

On the left side panel of the Player (when viewing from the front) includes a PC Card slot, which is used to connect the wireless PC Card included with the Digital Media Player kit. To install the card, see chapter 2, "Setting up the Player."

Technical Support

Actiontec Electronics prides itself on making durable, high-quality, high-performance products. If you need assistance, the *Actiontec* Technical Support Department is available all day every day to provide professional support.



Actiontec Electronics, Inc.

760 N. Mary Avenue
Sunnyvale, CA 94085

Technical Support

Phone: 1.888.436.0657

E-mail: http://support.actiontec.com/email_support/support_form.php

Internet: www.actiontec.com/support

Setting Up the Player

2

The instructions that follow parallel the steps contained in the *Actiontec Installation Buddy*®, which provides a visual guide to setting up the Player. It is recommended the user run the Installation Buddy first, before attempting any other procedures.

To use the Player, it must be connected to a television and/or stereo, the wireless connection must be set up, the *Actiontec Media Buddy* must be installed, and the computer must be set up to find the media files.

Connecting the Player to a Television/Stereo

The first step in using the Digital Media Player is connecting it to a television and/or stereo.

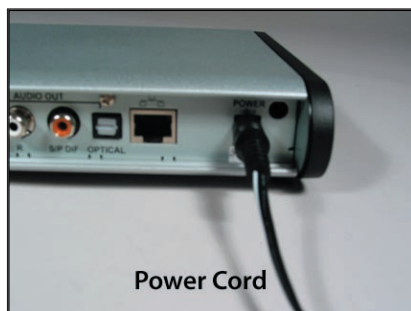
1. Remove the **Wireless Digital Media Player** from its box and place near or on top of the television.



2. Remove the **Power Cord** from its white box.



3. Plug the smaller end of the **Power Cord** into the **Power Port** on the back of the Player. The Power Port is on the far right side of the rear panel of the Player.



4. Plug the larger end of the **Power Cord** into a **Power Outlet**.



5. Make sure the **Power light** on the front panel of the Player is illuminated.



6. Remove the **Black Audio/Video Cable** (with one white, one yellow, and one red RCA plug on both ends of the cable) from the package.



7. Plug one **White RCA Plug** into the **White Left ("L") Audio Out Port** on the rear panel of the Player.



8. Plug the **other White RCA Plug** into the **White Audio In Port** on the television or stereo.



9. Plug **one Red RCA Plug** into the **Red Right(“R”) Audio Out Port** on the rear panel of the Player.



10. Plug the other end of the **Red RCA Plug** into the **Red Audio In Port** on the television or stereo.



11. Plug **one Yellow RCA Plug** into the **Yellow Video Out Comp Port** on the rear panel of the Player.



12. Plug the **other Yellow RCA Plug** into the **Yellow Video In Port** on the television or stereo.



13. Remove the 11 Mbps Wireless Card from the package.



14. Remove the cover from the **wireless card slot** on the side of the Player and plug the **Wireless Card** into the slot.

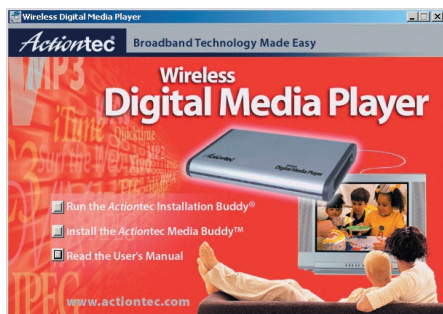


Next, go to “Installing the *Actiontec* Media Buddy” on the next page.

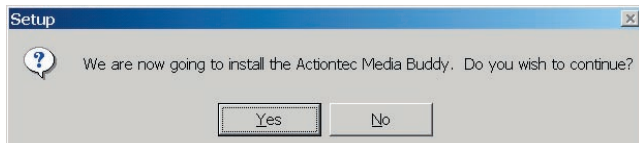
Installing the Actiontec Media Buddy

The Actiontec Media Buddy organizes and displays the media files on the computer, all from one easy interface. To install:

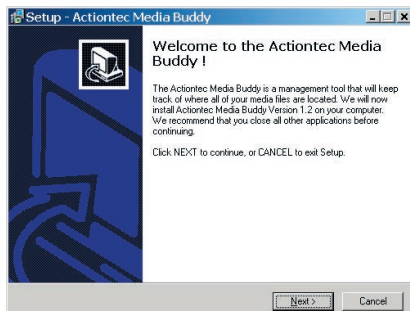
1. Get the **Installation CD** from the Player's package and insert it in the CD-ROM drive of the computer.
2. When the window shown below appears, click the box next to "Install the Actiontec Media Buddy."



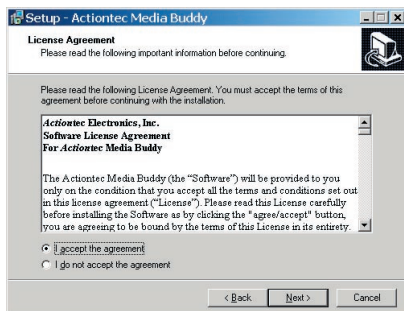
3. When the next window appears, click **Yes** to install the Media Buddy.



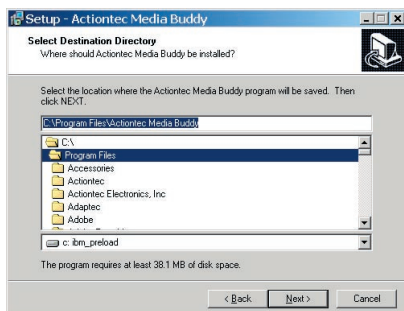
4. In the next window, click **Next**.



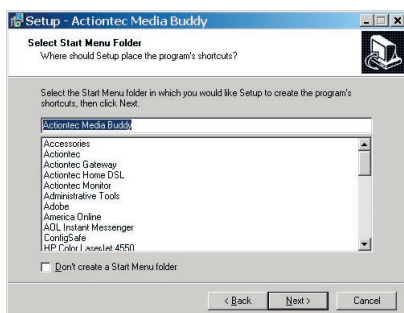
5. In the next window, read the **License Agreement**. Click in the circle next to “I accept the agreement,” then click **Next**.



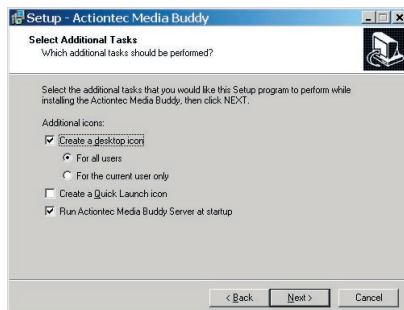
6. In the next window, click **Next**.



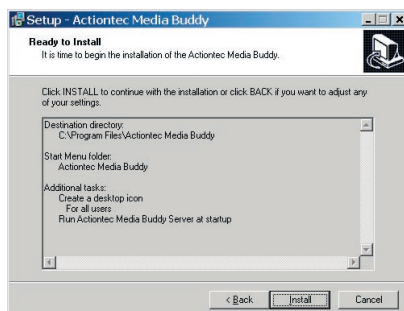
7. In the next window, click **Next**.



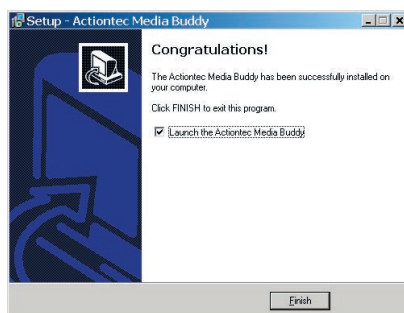
8. In the next window, click **Next**.



9. In the next window, click **Install**.



11. Wait until the next window appears, then click **Finish**. The Media Buddy is installed.



12. Turn the Player off and on.

If the Player is set up to join an already existing wireless network, go to “Setting Up the Media Buddy” on page 18.

If the Player is set up to wirelessly connect to a single computer only (ad hoc connection), see the computer’s documentation to set up the computer to connect.

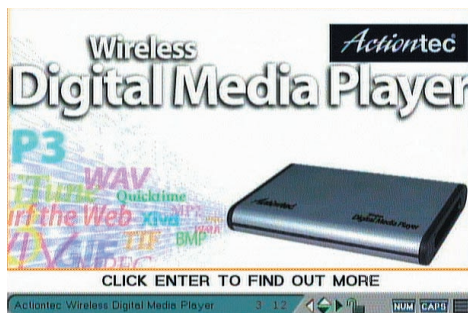
Setting up the Wireless Connection

After connecting the Player to a television/stereo, the wireless connection must be set up to share the digital media between the computer and the Player.

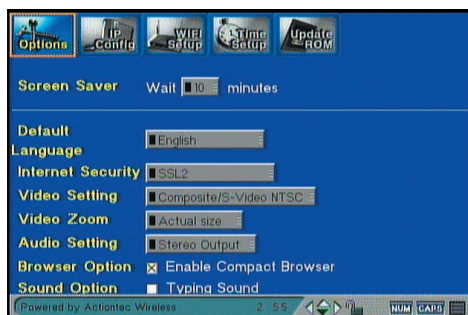
There are two ways to do this, depending on whether or not there is a wireless network already in use. If a wireless network already exists, follow the procedure outlined in “Connecting to an Existing Wireless Network,” below. If no wireless network exists, follow the procedure outlined in “Connecting to a Single Computer” on page 16.

Connecting to an Existing Wireless Network

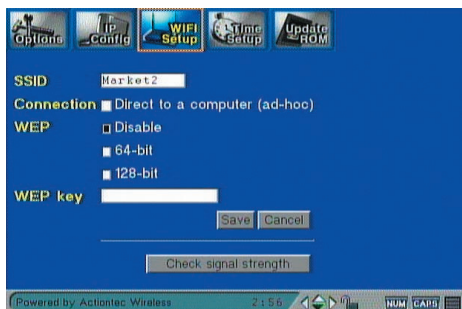
1. Turn on the television and the Player. The following screen appears.



2. After a few moments, the “Login” screen appears. Press **Setup** on the remote. The “Options” screen appears.



3. Highlight “WIFI Setup” at the top of the screen. The Wireless Setup screen appears.



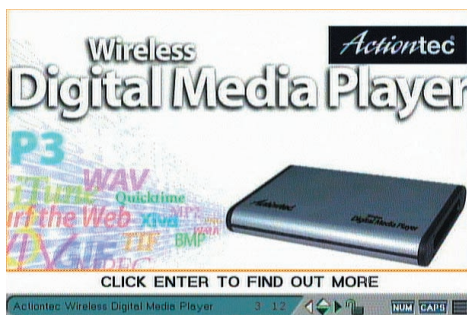
4. Enter the name of the wireless network to which the computer is connected.
5. Make sure the box next to “Direct to a computer (ad hoc)” is NOT active (no “x” is visible in the box).
6. Enter any WEP information (type of encryption and encryption key) the network may require in the rest of the text boxes.
7. Highlight “Save,” then press Enter on the remote.
8. In the “System Reboot” window that appears, click “OK” by pressing Enter on the remote.
9. The Player reboots.

Next, go to “Setting Up the Media Buddy” on page 18.

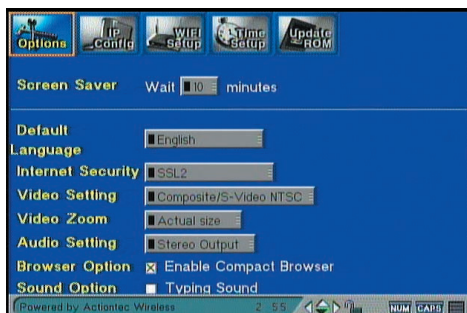
Connecting to a Single Computer

If no existing wireless network exists, the Player can be connected directly to a wireless-enabled computer to play media files. To do this:

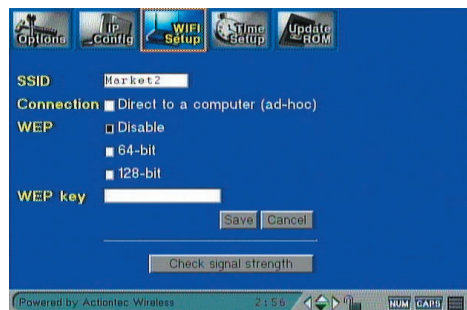
1. Turn on the television and the Player. The following screen should appear.



2. After a few moments, the "Login" screen appears. Press **Setup** on the remote. The "Options" screen appears.



3. Highlight "WIFI Setup" at the top of the screen. The Wireless Setup screen appears.



4. Enter the name of choice for the wireless network (using the alphanumeric keypad on the remote) in the “SSID” text box.
5. Highlight “Connection” and place an “x” in the box next to “Direct to a computer (ad-hoc)” by pressing the Enter button on the remote.
6. Highlight “Save,” then press the Enter button on the remote.
7. In the “System Reboot” window that appears, click “OK” by pressing the Enter button on the remote.
8. The Player reboots.

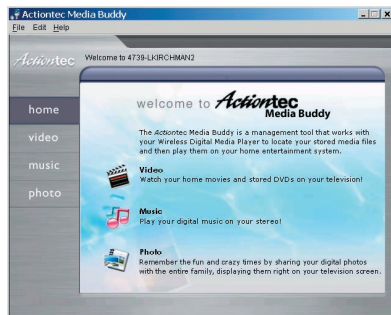
Next, go to “Setting Up the Media Buddy,” below.

 **Note:** To set up the Player via Ethernet, see Appendix B, “Setting Up the Player via Ethernet,” on page 61.

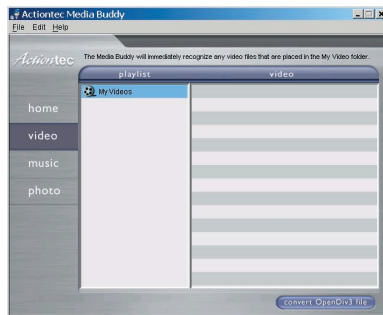
Setting Up the Media Buddy

After connecting the Player and installing the Media Buddy, the computer must be set up to locate the media files. To do this:

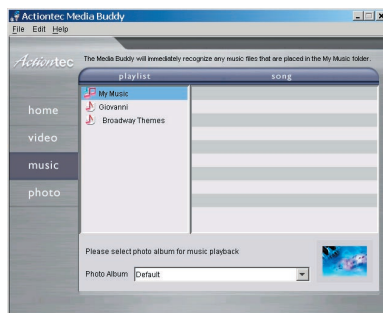
1. The **Welcome** window should already appear. If not, click the **Media Buddy icon** on the desktop.



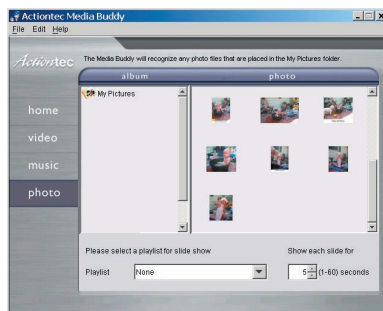
2. Click **Video**, and make sure the Media Buddy locates the video files (the default folder is “My Videos” inside the “My Documents” directory). If the video files are in a different folder, see “Redirecting the Media Buddy” on page 20.



3. Click **Music**, and make sure the Media Buddy locates the music files (the default folder is “My Music” inside the “My Documents” directory). If the music files are in a different folder, see “Redirecting the Media Buddy” on page 20.



4. Click **Photos**. If the digital photos are already in the “My Pictures” folder inside the “My Documents” directory, click Update Photo. If the digital photos are in a different folder, see “Redirecting the Media Buddy” on page 20.



Redirecting the Media Buddy

If the digital media files have been stored in folders other than the My Pictures, My Music, and My Videos folders, the Media Buddy must be redirected to the alternate folders.

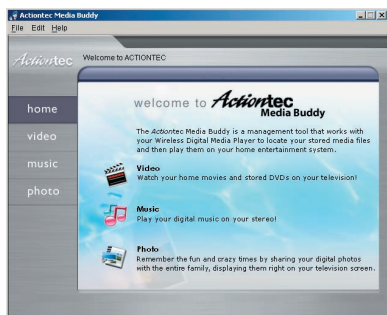
-  **Note:** To temporarily designate a folder the Player can recognize and play files from, a watch folder can be created for video and music files. See “Video” on page 28, or “Music” on page 29 for more information.

To redirect the Buddy to another folder:

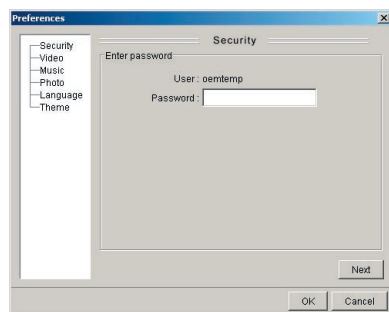
1. Make sure the Player, computer, and television have been properly configured, then, on the computer, right-click the Media Server icon in the system tray of the desktop, next to the clock, and select **Manage Media Files** from the list that appears.



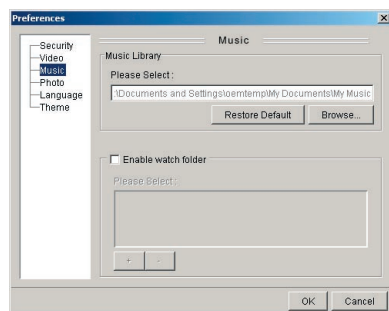
2. The Media Buddy Home window appears. Click **Edit** from the menu at the top of the window, and select **Preferences** from the list that appears.



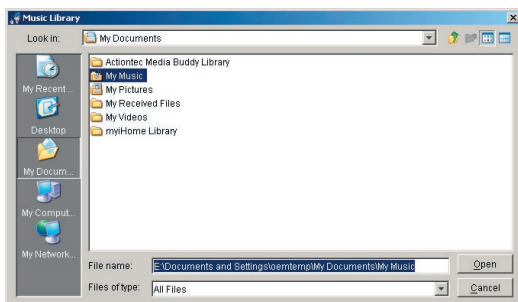
3. The Preferences window appears. Select the type of media (Music, Video, or Photos) the alternate folder contains from the list on the right side of the window.



4. In the next screen, click **Browse**.



5. Locate the alternate folder, highlight it, then click **Open**.



The Media Buddy displays the media files in the selected folder on the Player.

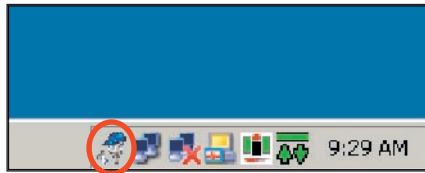


Note: To view all videos, music files, or photos through the Media Buddy without redirecting to different folders, all media files must be consolidated in one folder (i.e., videos into one video folder, music files into one music file folder, etc.)

Using the Media Buddy

3

The *Actiontec Media Buddy* is the software component of the Player that organizes the media files stored on computers. After installing the Media Buddy on the computer, the Media Buddy places an *Actiontec Media Buddy* icon in the system tray of the desktop (next to the clock).



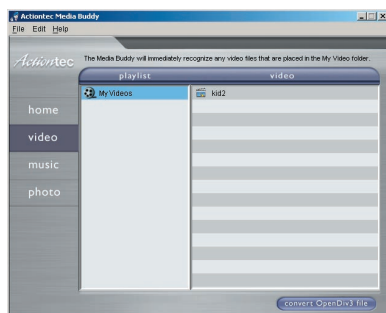
Home

Right-click on the *Actiontec Media Buddy* icon, then select **Manage Media Files** to generate the “*Actiontec Media Buddy*” Home window.



From the Home window, the user can browse through all the media files currently associated with the Media Buddy (these files are either set up using the Installation Buddy, or by redirecting the Media Buddy to an alternate folder). Click a media type (Video, Music, or Photo) to display the chosen type of media file.

Video screen:



Music screen:

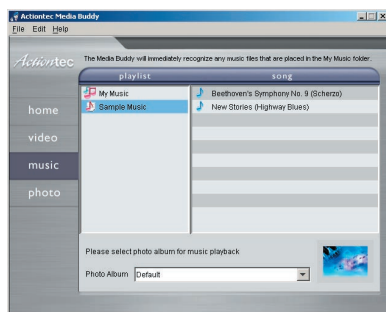
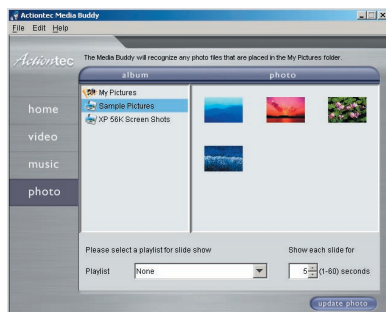


Photo screen:





Note: The files will be viewed in the same manner in which they are organized in the folder. For example, if all music files are contained in one folder, they will all be displayed as one list in the Media Buddy window, by file title. However, if the media folder is organized into subfolders, the files will be displayed in two panes: on the left, the subfolders (listed by artist, for example), and on the right, the files contained in the chosen subfolder (songs listed by title, for example).

Displaying Photos While Playing Music

To display photos while music is playing:

1. From the Home window, select **Music**.
2. The “Music” window appears. At the bottom of the window, click the down arrow next to the “Photo Albums” text box.

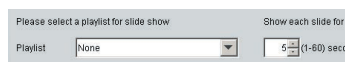


3. Select the photo album to be displayed while the music plays.
4. Close the Media Buddy. Photos from the selected photo album will display on the television screen while music plays.

Playing Music While Viewing a Slide Show

To play music while viewing a slide show:

1. From the Home window, select **Photo**.
2. The “Photo” window appears. At the bottom of the window, click the down arrow next to the “Playlist” text box.



3. Select the music playlist to be played while viewing the slide show.

4. Close the Media Buddy. Photos from the selected music playlist will play while viewing a slide show.

Additionally, the amount of time a photo remains onscreen during a slide show is controlled from the “Photo” window. Next to the “Playlist” list box is another text box. Enter the onscreen duration (in seconds) in the list box, and each photo played during a slide show will stay onscreen for the selected time.

Menu

The Media Buddy window contains a menu bar with the following items: File, Edit, and Help.

File

The File menu contains one item, Exit, which closes the Media Buddy. Click **Yes** in the window that appears to close the Buddy.

Edit

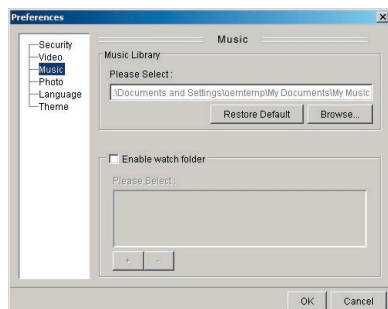
The Edit menu contains two items: Refresh Media Files, and Preference.

Refresh Media Files

When viewing one of the media file types in the Media Buddy window, the user can refresh the file list, if additional files have been added. Select the type of media file (Video, Music, or Photo), select Edit from the menu bar, then select Refresh Media Files from the menu that appears. Any new files added since the last refresh will be added.

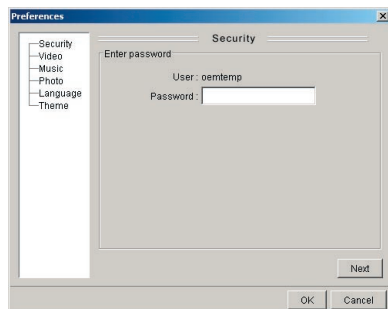
Preference

Selecting Preference from the Edit menu generates the Preference window.



On the left side of the window, there is a list of options (Security, Video, Music, Photo, Language, and Theme).

Security - Selecting **Security** in the Preference window allows the user to create a password so that only individuals who know the password can access the Media Player.



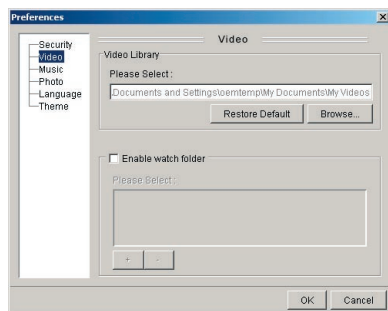
To create or change a password:

1. Make sure the box next to “Enable Password” is checked. If not, click in it to activate.
2. Enter the password in the “New Password” text box. The password must be alphanumeric and at least three characters long.

3. Enter the password again in the “Retype Password” text box.
4. Click **Save**.

The next time Media Player is accessed, the user must enter this password

Video - Selecting **Video** in the Preference window allows the user to redirect the Buddy to a new video folder, or configure a watch folder.



To redirect the Buddy to a new video folder:


1. Click **Browse**, navigate to the folder, and click **Open**.
2. Click **OK**. The Buddy will now search for video files in the folder selected in step 1.

Additionally, watch folders can be set up to play videos from the CD drive, without having to redirect the video folder.

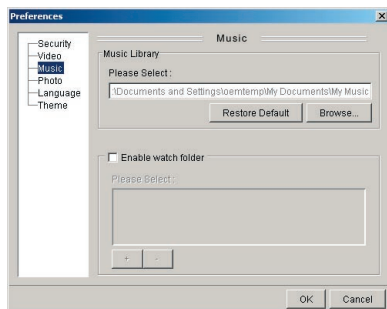
 **Note:** DVD movies cannot be shown on the Player.

To set up a watch folder :

1. Click in the “Enable watch folder” check box.
2. Press +.
3. Browse to the folder or drive to be watched, highlight it, then press **Open**. The file or drive will appear in the “Please Select” list box.
4. In the Video screen on the Player’s television interface, the new folder appears. If not, press “Refresh” on the remote.

 **Note:** If a designated watch folder exists on a removable drive, it will disappear from the watch folder list when the removable drive is disconnected or removed.


Music - Selecting **Music** in the Preference window allows the user to redirect the Buddy to a new music folder, or configure a watch folder.



To redirect the Buddy to a new music folder:

1. Click **Browse**, navigate to the folder, and click **Open**.
2. Click **OK**. The Buddy will now search for music files in the folder selected in step 1.

Additionally, watch folders can be set up to play music from the CD drive, without having to redirect the video folder.

 **Note:** Standard audio CDs cannot be played on the Player. The Player only plays files in the following formats: mp3, Ogg Vorbis, AAC, WMA, and wav. Also, any files encrypted with Digital Rights Management (DRM) software will not play on the Player.

To set up a watch folder:

1. Click in the “Enable watch folder” check box.
2. Press +.
3. Browse to the folder or drive to be watched, highlight it, then press **Open**. The file or drive will appear in the “Please Select” list box.
4. In the Music screen on the Player’s television interface, the new folder appears. If not, press **Refresh** on the remote.


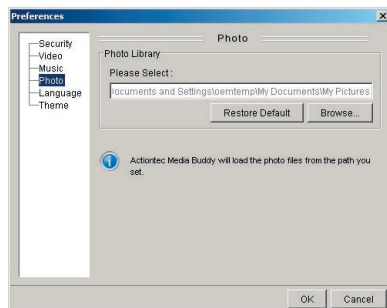
 **Note:** If a designated watch folder exists on a removable drive, it will disappear from the watch folder list when the removable drive is disconnected or removed.

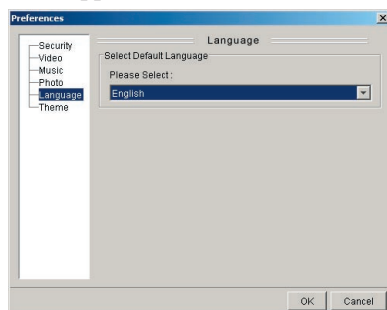
Photo - Selecting **Photo** in the Preference window allows the user to redirect the Buddy to a new photo folder.



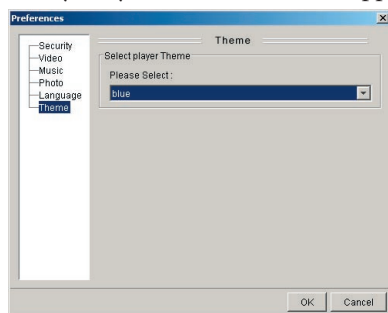
To redirect the Buddy to a new photo folder:

1. Click **Browse**, navigate to the folder, and click **Open**.
2. Click **OK**. The Buddy will now search for photo files in the folder selected in step 1.

Language - Selecting **Language** in the Preferences window generates the Language pane. From here, the user selects the language the Buddy will use. Currently, only English is supported.



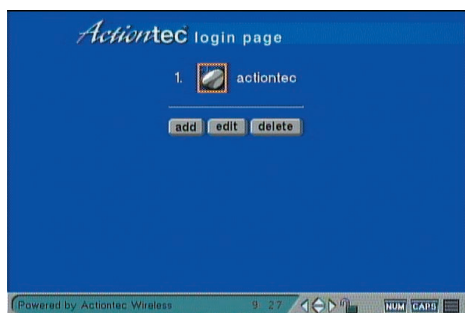
Theme - Selecting **Theme** in the Preferences window generates the Theme pane. From here, the user selects the theme (or “skin”) the Player’s television interface will use. Currently, only the “Blue” theme is supported.



Playing Digital Media

4

The *Actiontec* Wireless Digital Media Player is designed to play media files stored on a computer through the television or stereo to which it is connected. After the Player has been properly connected and set up, the Login screen appears.



From this screen, the user can access all digital media files from a properly configured computer.

Remote Control

To interface with the Player, the included remote control is used.



Power Button

The red button in the upper left corner is the power button. Pressing this button causes the Player to turn on and off.

Alphanumeric Keypad

This alphanumeric keypad is used to enter numerals or letters while using the Player's television interface. To enter the letter "n" in an active text box onscreen, for example, press the alphanumeric keypad button marked "6mno" three times in succession. The character next to the insertion bar will change from "6" to "m" to "n." After pausing for a moment, the insertion bar will move past the entered character, ready for the next character.

BKSP (Backspace) Button

The "BKSP" button deletes entries in the active text box, one character at a time.

Cap/Num (Capitals/Numerals) Button

The "CAP/NUM" button enters capitalized letters in an active text box (after pressing the button once; "CAP" in the bottom right corner of the television will be highlighted) or numerals only (after pressing the button twice; "NUM" in the bottom right corner of the television screen will be highlighted) using the alphanumeric keyboard. Pressing the button three times returns the alphanumeric keyboard to its default operation (lower case letters, numerals, etc.)

Zoom Button

The "ZOOM" button changes the view of the video displayed.

Mode Button

The "MODE" button cycles the Player through the various Video Setting options. See "Video Settings" on page 52 for more information.

Setup Button

Pressing the "SETUP" button generates the Option screen. See "Option Bar" on page 49 for more information.

Mute Button

Pressing the MUTE button mutes all audio from the Player.

Page Up, Page Down Buttons

When viewing a long file list, use the Page Up and Page Down buttons to quickly scroll through the list.

Directional Keypad

The four Directional keypad buttons are used to navigate around the Player's television interface screens. When an item is highlighted on a screen, press the appropriate direction button to move the highlight to a different option.

Enter Button

The "ENTER" button activates the highlighted item on the television screen.

Frame Button

The "FRAME" button activates different frames within the currently active window, and can only be used while surfing the Internet via the Player.

Tab Button

The "TAB" button moves the cursor laterally (left to right) in the television interface screen, or when surfing the Internet via the Player.

Video, Music, Photo, and Internet Buttons

These buttons generate the Video (see page 41), Music (see page 43), Photo (see page 45), and Internet (see page 47) screens, respectively.

Action (Prev, Play, Next, Rew, Stop, Fwd) Buttons

These buttons are used, when viewing a video, in much the same way as the buttons on a DVD player. The “Prev” and “Next” buttons move the video to the next/previous chapter (if applicable), the “Fwd” and “Rew” fast forward and rewind the video.

While viewing photos or playing music, the Prev and Next buttons will cause the next photo to appear, or the next song on the list to begin playing. The “Stop” button causes the song or slide show playing to stop.

URL Button

The URL Button causes the URL section of the Internet pane to appear. In the URL pane, enter the address in the URL text box to visit a particular Web site.

Home Button

Pressing the “HOME” button causes the Home screen (see page 41) to appear, unless no computer has been logged into, in which case the Login screen (see page 37) will appear.

Login Button

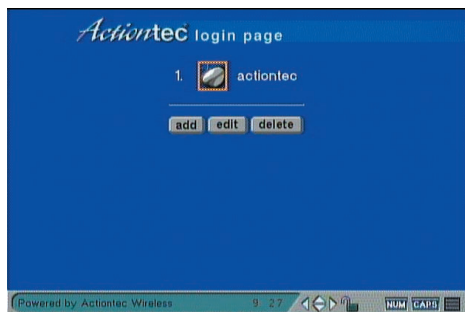
Pressing the “LOGIN” button causes the Login screen (see page 37) to appear.

Options Button

Pressing the “OPTIONS” button causes the Options bar (see page 51) to appear.

Login Screen

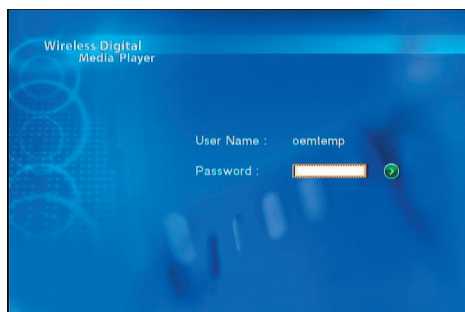
When the Login screen appears, a list of previously added computers appears on the television screen.




If the computer icon is gray, the computer is currently disconnected. If it is blue, the computer is connected.

Selecting a Computer

To select one of the computers, use the direction buttons on the remote to highlight a computer, then press the Enter button on the remote. Another Login screen appears. If a password has been set up, enter it using the alphanumeric buttons on the remote, then press the Tab button on the remote to highlight the green right arrow button on the television screen. Press the Enter button, and the Home screen appears.

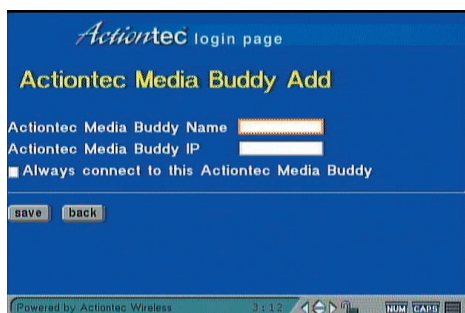


Adding Another Computer


 **Note:** Since the Player automatically finds computers running the Media Buddy on the selected network, adding another computer manually is not recommended.

To add another computer to the Login Screen list:

1. In the Login screen, use the direction keys on the remote to highlight “Add”, then click the Enter button.
2. Another Login screen appears. Enter the name of the computer as it will appear in the initial Login screen in the “Name” text box.



3. Enter the IP address of the computer in the “IP” text box.

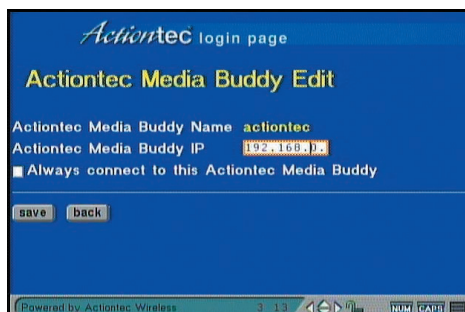
 **Note:** Enter the IP address of the computer here only if it will not change (i.e., it is not set up to connect via DHCP).

4. If this computer will be connected to the Player every time the Player is turned on, click in the “Always Connect” text box.
5. Use the direction buttons on the remote to highlight the Save button, then click the Enter button on the remote. The computer is added to the Login screen list.

Editing a Computer's Login Profile

To edit a computer's Login profile:

1. In the Login screen, use the direction keys on the remote to highlight Edit, then click the Enter button.
2. An Edit screen appears. Highlight the computer profile to be edited, then press the Enter button on the remote.

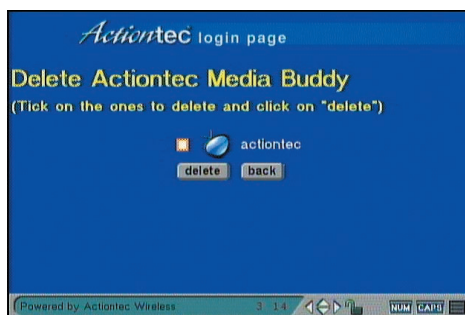


3. Another Edit screen appears. Change the computer's IP address in the IP text box.
4. Use the direction buttons on the remote to highlight the Save button, then click the Enter button on the remote. The computer's profile has been changed.

Deleting a Computer

To delete a computer on the Login list:

1. In the Login screen, use the direction keys on the remote to highlight Delete, then click the Enter button.
2. Another Login screen appears, with a list of computers. Highlight the box next to the computer's name, then click the Enter button on the remote. An "X" appears in the box.



3. Using the direction buttons on the remote, highlight "Delete" and then click the Enter button on the remote. The computer is deleted.

Accessing Media Files

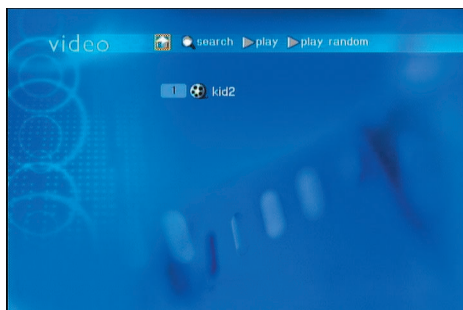
Once a computer has been chosen in the Login screen (see “Selecting a Computer” on page 37), the Home screen appears.



Playing Videos

To play a video:

1. From the Selection screen, press 1 (or Video) on the remote.
2. The Video screen appears. Select a video from the available list by pressing the appropriate number on the numeric keypad on the remote. For instance, if the user wants to play video 3, press 3 on the numeric keypad.



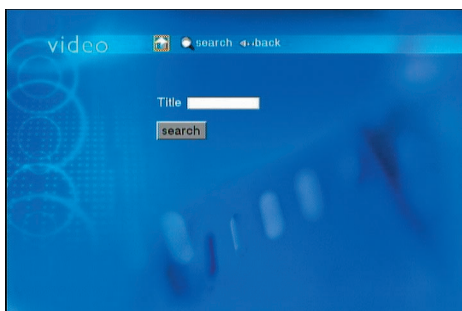
3. To view additional lists, page down by pressing the Page Down button on the remote, or navigate (using the direction buttons on the remote) to the number groups at the top right side of the screen (1-9 10-18, etc.), then press the Enter button on the remote to select another list of videos. Select a video from the next list that appears by pressing the appropriate number on the remote's numeric keypad.

While the video is playing, the controls on the bottom of the remote behave similarly to the controls on a DVD player (see “Action Buttons” on page 36).

Search for Videos

To search for a particular video:

1. Use the direction buttons on the remote to highlight “Search” at the top of the Video screen, then press Enter on the remote.
2. A Search screen appears. Use the direction keys to highlight the Search text box, then enter the first few letters of the video title.

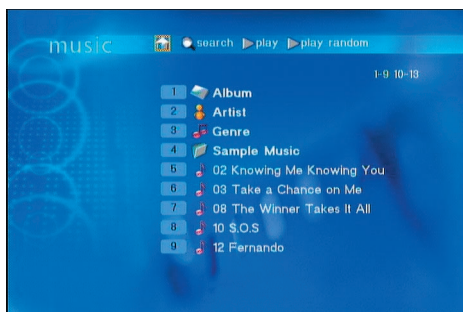


3. Highlight “Search” on the screen, then press **Enter** on the remote.
4. A list of videos appears. Select a video to play by pressing the appropriate number on the numeric keypad.

Playing Music

To play music files:

1. From the Selection screen, press 2 (or Music) on the remote.
2. The Music screen appears. Select a song from the available list by pressing the appropriate number on the numeric keypad on the remote. For instance, if the user wants to play song file 3, press 3 on the numeric keypad.



3. To view additional lists, page down by pressing the Page Down button on the remote, or navigate (using the direction buttons on the remote) to the number groups at the top right side of the screen (1-9 10-18, etc.), then press Enter on the remote to select another list of music files. Select a music file from the next list that appears by pressing the appropriate number on the remote's numeric keypad.

While playing a single song (i.e., selecting one song from a list), the “Prev” and “Next” buttons restart the song, while “Stop” stops the song and return the Player to the Music screen. While playing a song from a list (i.e., using the “Play” or “Play Random” options at the top of the screen), the “Prev” and “Next” buttons will play the previous and next songs on the list, respectively.

Play Entire List in Order

To play an entire list of music files in alphabetic order:

1. Locate a list of music files to be played.
2. Using the direction buttons, navigate to “Play” at the top of the Music screen.
3. Press **Enter** on the remote. The first song on the list plays.

Play Entire List Randomly

To play an entire list of song files at random:

1. Locate a list of song files to be played.
2. Using the direction buttons, navigate to “Random” at the top of the Music screen.
3. Press **Enter** on the remote. A random song from the chosen list plays.

Search

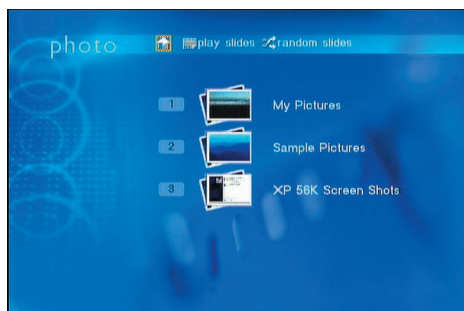
To search for a particular song file:

1. Use the direction buttons on the remote to highlight Search at the top of the Video screen, then press Enter on the remote.
2. A “Search” screen appears. Use the direction keys to highlight the Search text box, then enter the first few letters of the song file title.
3. Highlight Search on the screen, then press Enter on the remote.
4. A list of music files appears. Select a music file to play by pressing the appropriate number on the numeric keypad, or navigate to the additional lists at the upper right of the screen.

Viewing Photos

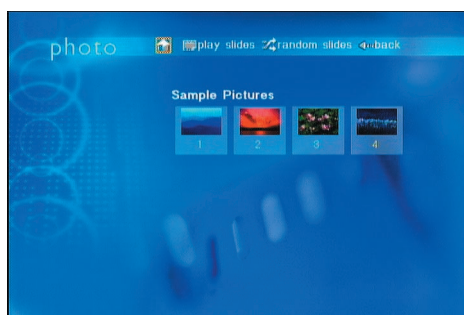
To view photos:

1. From the Selection screen, press **3** (or Photo) on the remote.
2. The Photo screen appears.



Select a photo or photo collection from the available list by pressing appropriate number on the numeric keypad on the remote. For instance, if the user wants to view photo list 2, press 2 on the remote.

3. The selected photo collection appears.



4. To view a photo, press the appropriate number button on the remote, or highlight the photo and press **Enter** on the remote.
5. To view additional lists, page down by pressing the Page Down button on the remote while in the Photo screen, or navigate (using the directional buttons on the remote) to the number groups at the top right side of the screen (1-9 10-18, etc.), then press Enter on the remote to select another list of photos. Select a photo from the next list that appears by pressing the appropriate number on the remote's alphanumeric keypad.

While a photo is being displayed, the Previous and Next buttons on the remote cause the previous or next photo in the photo collection to appear.

Play Entire List in Order

To play an entire list of photo files in order:

1. Locate a list of photos to be displayed.
2. Using the direction buttons, navigate to Play Slides at the top of the Photo screen.
3. Press **Enter** on the remote. The first photo on the list is displayed. After a few seconds, the next photo is displayed.

Play Entire List Randomly

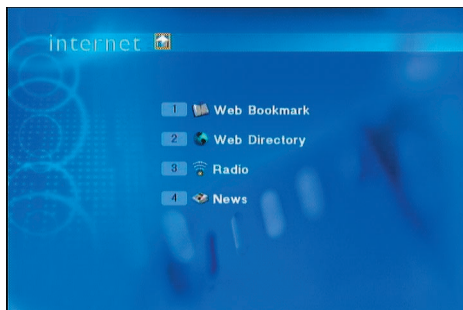
To display an entire list of photos at random:

1. Locate a list of photos to be displayed.
2. Using the direction buttons, navigate to Random Slides at the top of the Photo screen.
3. Press **Enter** on the remote. A random photo from the chosen list is displayed. After few seconds, another photo is displayed

Using the Internet

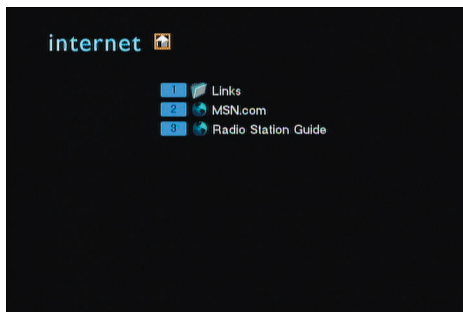
To access various Internet services:

1. From the Selection screen, press the 4 button on the remote.
2. The Internet screen appears. Select an Internet service from the available list by pressing appropriate number on the numeric keypad on the remote. For instance, to listen to Internet radio, press 4.



Web Bookmarks

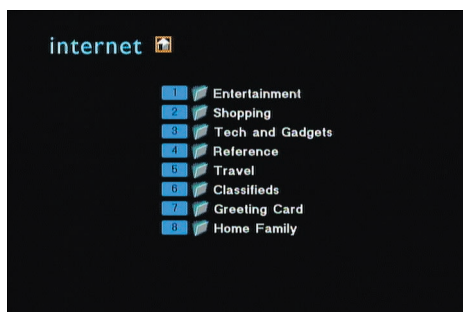
Pressing 1 on the remote when in the Internet screen generates the Web Bookmarks screen.



Here, the list of bookmarks included in the “Favorites” folder of Internet Explorer running on the computer is displayed. Clicking on a link generates the Web page selected.

Web Directory

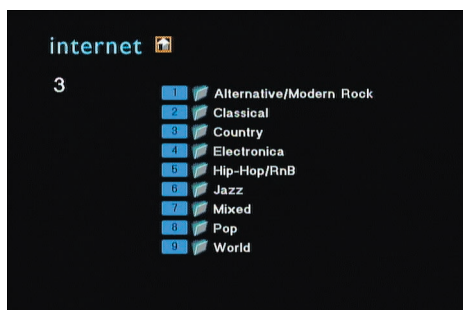
Pressing 2 on the remote when in the Internet screen generates the Web Directory screen.



Here, the user can visit various popular Internet destinations, including entertainment, shopping, and tech gear Web sites. Simply use the numeric keypad on the remote to navigate.

Radio

Pressing 3 on the numeric keypad of the remote when in the Internet screen generates the Internet Radio screen.



Here, the user can visit listen to popular Internet radio stations, in a variety of music genres. Use the alphanumeric keypad on the remote to navigate to the music category of choice, then select a station. To stop listening to a particular

station, press Stop on the remote.

News

Pressing 4 on the remote when in the Internet screen generates the Internet News screen.



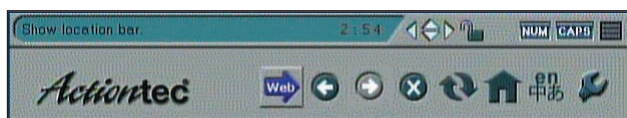
Here, the user can visit various Internet news Web sites. Simply use the numeric keypad on the remote to navigate to the news Web site of choice.

Actiontec Link

Pressing the “MISC” button, or choosing “Actiontec” in the Home screen, causes the Actiontec Internet link page to open.

Options Bar

Pressing the Options button on the remote generates the Options bar at the bottom of the television screen.



Web Button

Pressing the Web Button in the Options bar causes the URL bar to appear. Enter a URL address to visit a particular Web site (www.actiontec.com. for example), then press Enter on the remote to visit the Web site.

Arrow Buttons



Pressing the Arrow buttons (Back and Forward) cause the previous screen to appear (left arrow), or, if applicable, the next screen to appear.

X Button



Pressing the “X” button causes the screen currently loading to stop loading.

Reload Button



Pressing the “Reload” button reloads the current screen.

Home Button



Pressing the “Home” button causes the Home screen to appear.

Language Button

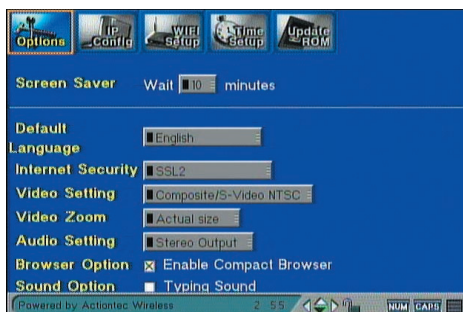


Pressing the “Language” button allows the user to change the language used by the Player. When the Language button is pressed, a language name will appear in the left corner of the screen. Pressing Enter on the remote selects the language. Pressing the Language button again displays another language name.

Options Button



Pressing the “Options” button causes the “Options” screen to appear.

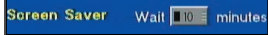



At the top of the Options screen are five links: Options, IP Config, WIFI Setup, Time Setup, and Update ROM.





Options


In the Options screen (shown above), which opens automatically when the “Options” button is pressed, has various settings that can be changed by clicking on the menus. After making one or more changes in the Options screen, navigate to the bottom of the screen, highlight “Save,” and press **Enter** on the remote to implement and save the changes made.

Screen Saver -  - To change the time period until the Player’s screen saver activates, highlight the Screen Saver list box, then press **Enter** on the remote. A list (1-60) appears. Select the number of minutes, then press **Enter** on the remote. The screen saver will activate after the number of minutes selected.


Default Language -  - To change the language of the Player’s television interface, highlight the Default Language list box, then press **Enter** on the remote. A list of languages appears. Select a language, then press **Enter** on the remote. The default language of the interface changes to the language selected.


Internet Security -  - To change the Player's type of Internet Security, highlight the Internet Security list box, then press **Enter** on the remote. A list of options appears (SSL2, SSL3, TLSV1/SSL2/SSL3). Select a level of Internet security, then press **Enter** on the remote. The level of Internet security of the Player changes to the level of security selected.


 **Note:** It is recommended that the default Internet security setting (SSL2 [Secure Sockets Layer 2]) be left unchanged.

Video Setting -  - To change the Player's video setting, highlight the Video Setting list box, then press **Enter** on the remote. A list of settings appears (Composite/S-Video NTSC, Component NTSC, Composite/S-Video PAL, etc.). After consulting the documentation of the television or monitor connected to the Player to find out which video setting to select, highlight it, then press **Enter** on the remote. The video setting of the Player changes to the setting selected.

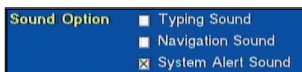
 **Note:** For most standard televisions, the default setting (Composite/S-Video NTSC) should be left unchanged.

Video Zoom -  - To change the Player's video zoom, highlight the Video Zoom list box, then press **Enter** on the remote. A list of video zoom settings appears (Fit to screen, Full screen, Actual size). Highlight a video zoom setting, then press **Enter** on the remote. The video zoom of the Player changes to the setting selected. Video zoom works only when a video is playing

Audio Setting -  - To change the Player's audio setting, highlight the Audio Setting list box, then press **Enter** on the remote. A list of settings appears (Stereo Output, AC3 5.1 Output). After consulting the documentation of the audio receiver connected to the Player to find out which audio setting to select, highlight it, then press **Enter** on the remote. The audio setting of the Player changes to the setting selected.

Browse Option -  - To enable the Player's compact browser, click in the box next to "Enable Compact Browser" and place an "x" there. The compact browser causes interface elements on the television screen (buttons, etc.) to shrink or move closer together, enabling smaller screens to display more interface elements

Sound Option -



- To select a sound while typing or navigating in the Player's television interface, or a sound when a system alert occurs, highlight the appropriate Sound Option box and place an "X" there by pressing Enter on the remote. The selected sound will play when the action occurs.

Restore Factory Settings -



- To restore the Player's factory default settings, highlight the "Restore Factory Settings" button and press **Enter** on the remote. The factory settings will be restored on the Player.

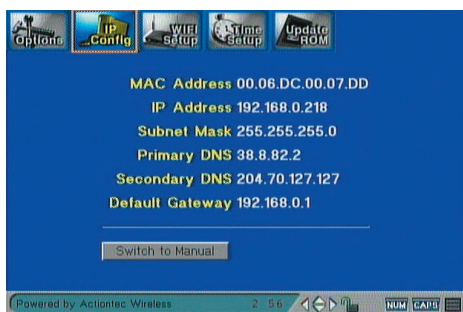
Save/Cancel -



- To cause the changes made in the Options screen to activate on the Player, highlight the "Save" button and press **Enter** on the remote. The changes will be activated. If the user chooses to cancel any changes made in the Options screen before selecting "Save," highlight the "Cancel" button and press **Enter** on the remote. No changes will be made.

IP Config

Clicking "IP Config" in the "Options" screen causes the "IP Config" screen to appear.



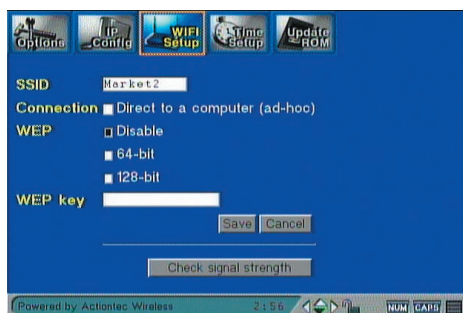
This screen shows the various addresses the Player is using while in its current network setup. Highlighting "Switch to Manual" and pressing **Enter** on the remote causes the fields to become modifiable.



Note: It is recommended that the default IP Config settings be left unchanged.

WiFi Setup

Selecting “WIFI Setup” generates the WiFi Setup screen. For more information concerning the settings in the WIFI Setup screen, see “Setting Up the Wireless Connection” on page 15.

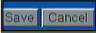


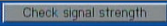
Here, the user enters the wireless information needed to connect the Player to the computer. After making one or more changes in the Options screen, navigate to the bottom of the screen, highlight “Save,” and press **Enter** on the remote to implement and save the changes made.

SSID - **SSID** - Enter the SSID (Service Set Identifier), or name, of the wireless network to which the Player connects in the “SSID” text box by highlighting the text box, then entering the name using the alphanumeric keypad on the remote.

Connection- **Connection** ☒ Direct to a computer (ad-hoc) - To create an ad hoc (computer-to-computer) wireless network, highlight the box next to “Direct to a computer (ad-hoc)” and press **Enter** on the remote to place an “x” there. When this box is inactive (no “x” appears), the Player is set to join an existing wireless network.

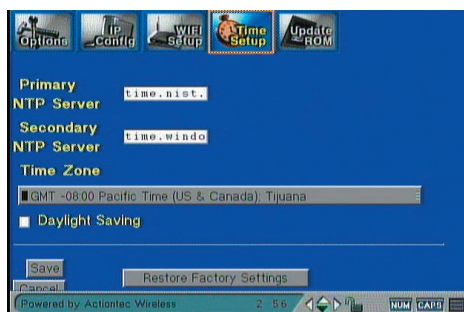
WEP - **WEP** ☐ Disable ☒ 64-bit ☐ 128-bit **WEP key** - To activate WEP (Wired Equivalent Privacy) security on the Player’s computer-to-computer network, highlight the box next to either “64-bit” or “128-bit” and press **Enter** on the remote. Then, highlight the “WEP key” text box and enter the hexadecimal key using the alphanumeric keypad on the remote. The computer connecting to the Player must be set up with the same type of WEP and WEP key to communicate wirelessly with it. If joining an existing wireless network that requires WEP security authentication, select the type of WEP and enter the key in the WEP key text box.

Save/Cancel -  - To cause the changes made in the WIFI Setup screen to activate on the Player, highlight the “Save” button and press **Enter** on the remote. The changes will be activated. If the user chooses to cancel any changes made in the Options screen before selecting “Save,” highlight the “Cancel” button and press Enter on the remote. No changes will be made.

Check Signal Strength -  - To check the signal strength of the wireless network, highlight the “Check signal strength” button and press **Enter** on the remote. Signal and noise amounts will appear onscreen. To stop, highlight the “Stop signal strength check” button and press Enter on the remote.

Time Setup

Selecting “Time Setup” generates the Time Setup screen.



Here, the user can change various aspects of the time settings of the Player, including time servers (if the Player is online), time zone, and daylight savings time.

Update ROM

Selecting “Update Rom” generates the “Update ROM” screen.



By clicking on the link in the screen and following the subsequent instructions, the user can update the firmware of the Player.

Troubleshooting and Frequently Asked Questions

5

This chapter details some troubleshooting strategies, as well as frequently asked questions and their answers.

How far can I be from a computer or access point and maintain a connection?

The wireless card range depends on the environment. Indoor range is approximately 100 feet or more; outdoor range can reach up to 300 feet.

How fast is the wireless connection with the Digital Media Player?

The rated speed of the wireless connection under optimal conditions is 11Mbps. This speed does vary, depending on distance from the access point or computer and the amount of attenuation (physical barriers, such as walls, glass, etc.) the wireless signal must go through.

I'm getting skips and stops while watching movies from my computer using the Digital Media Player. What should I do?

Movies contain a very large amount of data. The speed and power of the computer controls how well you are able to watch movies using the Digital Media Player. If you are having problems, make sure that you close out of all unneeded programs on your computer. Other programs can take up processing time and slow down the movie you're watching.

What can I connect the Digital Media Player to?

The Digital Media Player can connect wirelessly to a computer or an access point. It can also connect to a router or hub via Ethernet.

Does the access point provide load-balancing capabilities?

No, the access point is not designed to track the load on the network resources; it is a data transport device only.

Will cordless phones interfere with the Digital Media Player?

The 802.11b Wireless Card uses 2.4 GHz frequency. If your cordless phone uses this frequency, problems may occur. Different cordless phones use different frequencies, and generally include a label stating which frequency they use. If you are having problems with interference caused by your cordless phone, try changing the wireless card's channel. This can sometimes clear up interference issues. Any wireless device using the 2.4 GHz frequency can cause wireless interference.

Can my wireless signal pass through floors, walls, and glass?

The effect of the physical environment can have varying effects on signal strength and quality. The denser an object (a concrete wall compared to a plaster wall, for example), the greater the interference will be. Concrete or metal-reinforced structures cause a higher degree of wireless signal loss than those made of wood, plaster, or glass.

What is WEP?

Wired Equivalent Privacy (WEP) is the standard encryption mode for 802.11b communications.

How do I make a HEX-based WEP key?

64-bit WEP Key – Composed of 10 alphanumeric characters (0-9, a-f); example: 843c29a562

128-bit WEP Key – Composed of 26 alphanumeric characters (0-9, a-f); example: 3c29f2536bef3276d32e364a2c

What is the difference between 40-bit and 64-bit encryption?

There really is no difference between the two. They are different terminologies used throughout the industry for the same level of encryption.

Specifications



General

Model Number

DMP011000-01 (Wireless Digital Media Player)

Standards

IEEE 802.11b (2.4 Ghz-DSSS); IEEE802.3 (10 BASE-T Ethernet); IEEE 802.3u (100 BASE-T Fast Ethernet)

Certifications

FCC; CE; UL; WiFi

LAN

10/100 Mbps (auto-sensing and auto-crossover) Ethernet (RJ-45) port

Audio

S/P DIF Port (RCA and Optical)

Left and Right Channel RCA Output Ports

Video

Composite Video Port

S-Video Port

Component Video Port

Other Input/Output

DVI (Digital Visual Interface)
Infrared Remote
Wireless PC Card slot

Visual Indicators

Power LED
Ethernet (10/100) LED
Link/Activity LED

Wireless

Operating Range

Up to 100 meters indoors
Up to 400 meters outdoors

Data Rates

11, 5.5, 2, and 1 Mbps

Environmental

Operating Temperature

0° to 65° Celsius

Storage Temperature

-20° to 85° Celsius

Operating and Storage Humidity

95%

Setting Up the Player via Ethernet

B

While it is recommended that the Player connect wirelessly to another computer to share digital media files, it can also be connected to an existing wired network or computer via Ethernet.

 **Note:** Do not install the wireless PC Card when connecting via Ethernet.

Connecting to a Wired Network

To connect the Player to an existing wired network via Ethernet:

1. Plug a standard, straight-through Ethernet cable into the Ethernet port on the rear panel of the Player.
2. Plug the other end of the Ethernet cable into an open Ethernet port on a router or hub connected to the wired network.
3. Reboot the Player.
4. When the Player has rebooted, all computers on the wired network with a Media Buddy properly installed and configured will display on the Login page.

Connecting to a Single Computer

To connect the Player to a single computer via Ethernet:

1. Plug a crossover Ethernet cable into the Ethernet port on the rear panel of the Player.
2. Plug the other end of the crossover Ethernet cable into an Ethernet port on the computer with a properly installed and configured Media Buddy.
3. Start up the Player and the computer. After attempting to connect to each other, the process will timeout. At this point, both the Player and computer revert to default connection mode, and locate each other.
4. The computer displays in the Login screen of the Player.

Notices

Regulatory Compliance Notices

Class B Equipment

This equipment has been tested and found to comply with the limits for a Class B digital device, pursuant to Part 15 of the FCC Rules. These limits are designed to provide reasonable protection against harmful interference in a residential installation. This equipment generates, uses, and can radiate radio frequency energy and, if not installed and used in accordance with the instructions, may cause harmful interference to radio communications. However, there is no guarantee that interference will not occur in a particular installation. If this equipment does cause harmful interference to radio or television reception, which can be determined by turning the equipment off and on, the user is encouraged to try to correct the interference by implementing one or more of the following measures:

- Reorient or relocate the receiving antenna;
- Increase the separation between the equipment and receiver;
- Connect the equipment to an outlet on a circuit different from that to which the receiver is connected;
- Consult the dealer or an experienced radio or television technician for help.

Modifications


The FCC requires the user to be notified that any changes or modifications made to this device that are not expressly approved by *Actiontec Electronics, Inc.*, may void the user's authority to operate the equipment.

Declaration of conformity for products marked with the FCC logo – United States only.

This device complies with Part 15 of the FCC Rules. Operation is subject to the following two conditions:

1. This device may not cause harmful interference;

2. This device must accept any interference received, including interference that may cause unwanted operation.

 **Note:** To comply with FCC RF exposure compliance requirements, the antenna used for this transmitter must be installed to provide a separation distance of at least 20 cm from all persons and must not be co-located or operating in conjunction with any other antenna or transmitter.

For questions regarding your product or the FCC declaration, contact:

Actiontec Electronics, Inc.
760 North Mary Ave.
Sunnyvale, CA 94086
United States
Tel: (408) 752-7700
Fax: (408) 541-9005

Limited Warranty

Hardware: *Actiontec Electronics, Inc.*, warrants to the end user (“Customer”) that this hardware product will be free from defects in workmanship and materials, under normal use and service, for twelve (12) months from the date of purchase from *Actiontec Electronics* or its authorized reseller.

Actiontec Electronics’ sole obligation under this express warranty shall be, at *Actiontec’s* option and expense, to repair the defective product or part, deliver to Customer an equivalent product or part to replace the defective item, or if neither of the two foregoing options is reasonably available, *Actiontec Electronics* may, in its sole discretion, refund to Customer the purchase price paid for the defective product. All products that are replaced will become the property of *Actiontec Electronics, Inc.* Replacement products may be new or reconditioned. *Actiontec Electronics* warrants any replaced or repaired product or part for ninety (90) days from shipment, or the remainder of the initial warranty period, whichever is longer.

Software: *Actiontec Electronics* warrants to Customer that each software program licensed from it will perform in substantial conformance to its program specifications, for a period of ninety (90) days from the date of purchase from *Actiontec Electronics* or its authorized reseller. *Actiontec Electronics* warrants the media containing software against failure during the warranty period. The only updates that will be provided are at the sole discretion of *Actiontec Electronics* and will only be available for download at the *Actiontec* Web site, www.actiontec.com. *Actiontec Electronics’* sole obligation under this express warranty shall be, at *Actiontec Electronics’* option and expense, to refund the purchase price paid by Customer for any defective software product, or to replace any defective media with software which substantially conforms to applicable *Actiontec Electronics* published specifications. Customer assumes responsibility for the selection of the appropriate applications program and associated reference materials. *Actiontec Electronics* makes no warranty or representation that its software products will meet Customer’s requirements or work in combination with any hardware or applications software products provided by third parties, that the operation of the software products will be uninterrupted or error free, or that all defects in the software products will be corrected. For any third-party products listed in the *Actiontec Electronics* software product documentation or specifications as being compatible, *Actiontec Electronics* will make reasonable efforts to provide compatibility, except where the non-compatibility is caused by a “bug” or defect in the third party’s product or from use of the software product not in accordance with *Actiontec Electronics* published specifications or user guide.

THIS ACTIONTEC ELECTRONICS PRODUCT MAY INCLUDE OR BE BUNDLED WITH THIRD-PARTY SOFTWARE, THE USE OF WHICH IS GOVERNED BY A SEPARATE END-USER LICENSE AGREEMENT.

THIS ACTIONTEC ELECTRONICS WARRANTY DOES NOT APPLY TO SUCH THIRD-PARTY SOFTWARE. FOR THE APPLICABLE WARRANTY, PLEASE REFER TO THE END-USER LICENSE AGREEMENT GOVERNING THE USE OF SUCH SOFTWARE.

Obtaining Warranty Service: Customer may contact *Actiontec Electronics* Technical Support Center within the applicable warranty period to obtain warranty service authorization. Dated proof of purchase from *Actiontec Electronics* or its authorized reseller may be required. Products returned to *Actiontec Electronics* must be pre-authorized by *Actiontec Electronics* with a Return Merchandise Authorization (RMA) number marked on the outside of the package, and sent prepaid and packaged appropriately for safe shipment, and it is recommended that they be insured or sent by a method that provides for tracking of the package. The repaired or replaced item will be shipped to Customer, at *Actiontec Electronics*' expense, not later than thirty (30) days after *Actiontec Electronics* receives the defective product.

Return the product to:
(In the United States)
Actiontec Electronics, Inc.
760 North Mary Avenue
Sunnyvale, CA 94085

Actiontec Electronics shall not be responsible for any software, firmware, information, memory data, or Customer data contained in, stored on, or integrated with any products returned to *Actiontec Electronics* for repair, whether under warranty or not.

WARRANTIES EXCLUSIVE: IF AN ACTIONTEC ELECTRONICS' PRODUCT DOES NOT OPERATE AS WARRANTED ABOVE, CUSTOMER'S SOLE REMEDY FOR BREACH OF THAT WARRANTY SHALL BE REPAIR, REPLACEMENT, OR REFUND OF THE PURCHASE PRICE PAID, AT ACTIONTEC ELECTRONICS' OPTION. TO THE FULL EXTENT ALLOWED BY LAW, THE FOREGOING WARRANTIES AND REMEDIES ARE EXCLUSIVE AND IN LIEU OF ALL OTHER WARRANTIES, TERMS OR CONDITIONS, EXPRESS OR IMPLIED, EITHER IN FACT OR BY OPERATION OF LAW, STATUTORY OR OTHERWISE, INCLUDING WARRANTIES, TERMS OR CONDITIONS OF MERCHANTABILITY, FITNESS FOR A PARTICULAR PURPOSE, SATISFACTORY QUALITY, CORRESPONDENCE WITH DESCRIPTION, AND NON-INFRINGEMENT, ALL OF WHICH ARE EXPRESSLY DISCLAIMED. ACTIONTEC ELECTRONICS

Limited Warranty

NEITHER ASSUMES NOR AUTHORIZES ANY OTHER PERSON TO ASSUME FOR IT ANY OTHER LIABILITY IN CONNECTION WITH THE SALE, INSTALLATION, MAINTENANCE OR USE OF ITS PRODUCTS.

ACTIONTEC ELECTRONICS SHALL NOT BE LIABLE UNDER THIS WARRANTY IF ITS TESTING AND EXAMINATION DISCLOSE THAT THE ALLEGED DEFECT OR MALFUNCTION IN THE PRODUCT DOES NOT EXIST OR WAS CAUSED BY CUSTOMER'S OR ANY THIRD PERSON'S MISUSE, NEGLIGENCE, IMPROPER INSTALLATION OR TESTING, UNAUTHORIZED ATTEMPT TO OPEN, REPAIR OR MODIFY THE PRODUCT, OR ANY OTHER CAUSE BEYOND THE RANGE OF THE INTENDED USE, OR BY ACCIDENT, FIRE, LIGHTNING, OTHER HAZARDS, OR ACTS OF GOD.

LIMITATION OF LIABILITY: TO THE FULL EXTENT ALLOWED BY LAW, *ACTIONTEC ELECTRONICS* ALSO EXCLUDES FOR ITSELF AND ITS SUPPLIERS ANY LIABILITY, WHETHER BASED IN CONTRACT OR TORT (INCLUDING NEGLIGENCE), FOR INCIDENTAL, CONSEQUENTIAL, INDIRECT, SPECIAL, OR PUNITIVE DAMAGES OF ANY KIND, OR FOR LOSS OF REVENUE OR PROFITS, LOSS OF BUSINESS, LOSS OF INFORMATION OR DATA, OR OTHER FINANCIAL LOSS ARISING OUT OF OR IN CONNECTION WITH THE SALE, INSTALLATION, MAINTENANCE, USE, PERFORMANCE, FAILURE, OR INTERRUPTION OF ITS PRODUCT, EVEN IF *ACTIONTEC ELECTRONICS* OR ITS AUTHORIZED RESELLER HAS BEEN ADVISED OF THE POSSIBILITY OF SUCH DAMAGES, AND LIMITS ITS LIABILITY TO REPAIR, REPLACEMENT, OR REFUND OF THE PURCHASE PRICE PAID, AT *ACTIONTEC ELECTRONICS'* OPTION. THIS DISCLAIMER OF LIABILITY FOR DAMAGES WILL NOT BE AFFECTED IF ANY REMEDY PROVIDED HEREIN SHALL FAIL OF ITS ESSENTIAL PURPOSE.

Disclaimer: Some countries, states or provinces do not allow the exclusion or limitation of implied warranties or the limitation of incidental or consequential damages for certain products supplied to consumers, or the limitation of liability for personal injury, so the above limitations and exclusions may be limited in their application to you. When the implied warranties are not allowed to be excluded in their entirety, they will be limited to the duration of the applicable written warranty. This warranty gives you specific legal rights which may vary depending on local law.

Dispute Resolution: The customer may contact the Director of Technical Support in the event the Customer is not satisfied with *Actiontec Electronics'* response to the complaint. In the event that the Customer is still not satisfied with the response of the Director of Technical Support, the Customer is instructed to contact the Director of Marketing. In the event that the Customer is still not satisfied with the response of the Director of Marketing, the Customer is instructed to contact the Chief Financial Officer and/or President.

Governing Law: This Limited Warranty shall be governed by the laws of the State of California, U.S.A., excluding its conflicts of laws and principles, and excluding the United Nations Convention on Contracts for the International Sale of Goods.