



EH2500 Series Dust-Tight Enclosure



C1473SM-C (4/07)

Contents

Important Safety Instructions 5

Description..... 6

 Models 6

Maintenance 6

Exploded Assembly Diagrams 7

List of Illustrations

1	EH2500 Series Exploded Assembly Diagram	7
2	EH2500 Series Wiring Diagram	9

List of Tables

A	EH2500 Series Exploded Assembly Parts List	8
B	EH2500 Series Wiring Diagram Parts List	9

Important Safety Instructions

1. Installation and servicing should only be done by qualified service personnel and conform to all local codes.
2. Unless the unit is specifically marked as a NEMA Type 3, 3R, 3S, 4, 4X, 6 or 6P enclosure, it is designed for indoor use only and it must not be installed where exposed to rain and moisture.
3. Only use replacement parts recommended by Pelco.
4. After replacement/repair of this unit's electrical components, conduct a resistance measurement between line and exposed parts to verify the exposed parts have not been connected to line circuitry.
5. The installation method and materials should be capable of supporting four times the weight of the unit and equipment.

The product and/or manual may bear the following marks:



This symbol indicates that dangerous voltage constituting a risk of electric shock is present within this unit.



This symbol indicates that there are important operating and maintenance instructions in the literature accompanying this unit.

Please thoroughly familiarize yourself with the information in this manual prior to installation and operation.

CAUTION:
RISK OF ELECTRIC SHOCK. DO NOT OPEN.

Description

The EH2500 Series enclosures are sealed, dust-tight and waterproof camera enclosures designed to protect a CCTV camera and lens from adverse environmental conditions.

The enclosures feature a sled for camera mounting and a “T” handle on the rear plate to assist in removing the back plate during installation and servicing.

All models will accept CCD cameras with fixed focal length or motorized zoom lenses.

MODELS

EH2508	6.25" L x 2.75" W x 2.75" H (15.88 x 6.99 x 6.99 cm)
EH2508-1/-2/-3	5.25" L x 2.75" W x 2.75" H (13.44 x 6.99 x 6.99 cm), 120/24/230 VAC heater
EH2512	10.25" L x 2.75" W x 2.75" H (26.04 x 6.99 x 6.99 cm)
EH2512-1/-2/-3	9.25" L x 2.75" W x 2.75" H (23.50 x 6.99 x 6.99 cm), 120/24/230 VAC heater
EH2515	13.25" L x 2.75" W x 2.75" H (33.66 x 6.99 x 6.99 cm)
EH2515-1/-2/-3	12.25" L x 2.75" W x 2.75" H (31.12 x 6.99 x 6.99 cm), 120/24/230 VAC heater

Maintenance

Regularly scheduled maintenance is not required. Clean the outer surface of the enclosure with a nonabrasive cleaning cloth and antistatic cleaner. Clean the viewing window with mild nonabrasive soap and water to maintain picture clarity. Do not use kerosene or similar substances that may damage the surface.

Exploded Assembly Diagrams

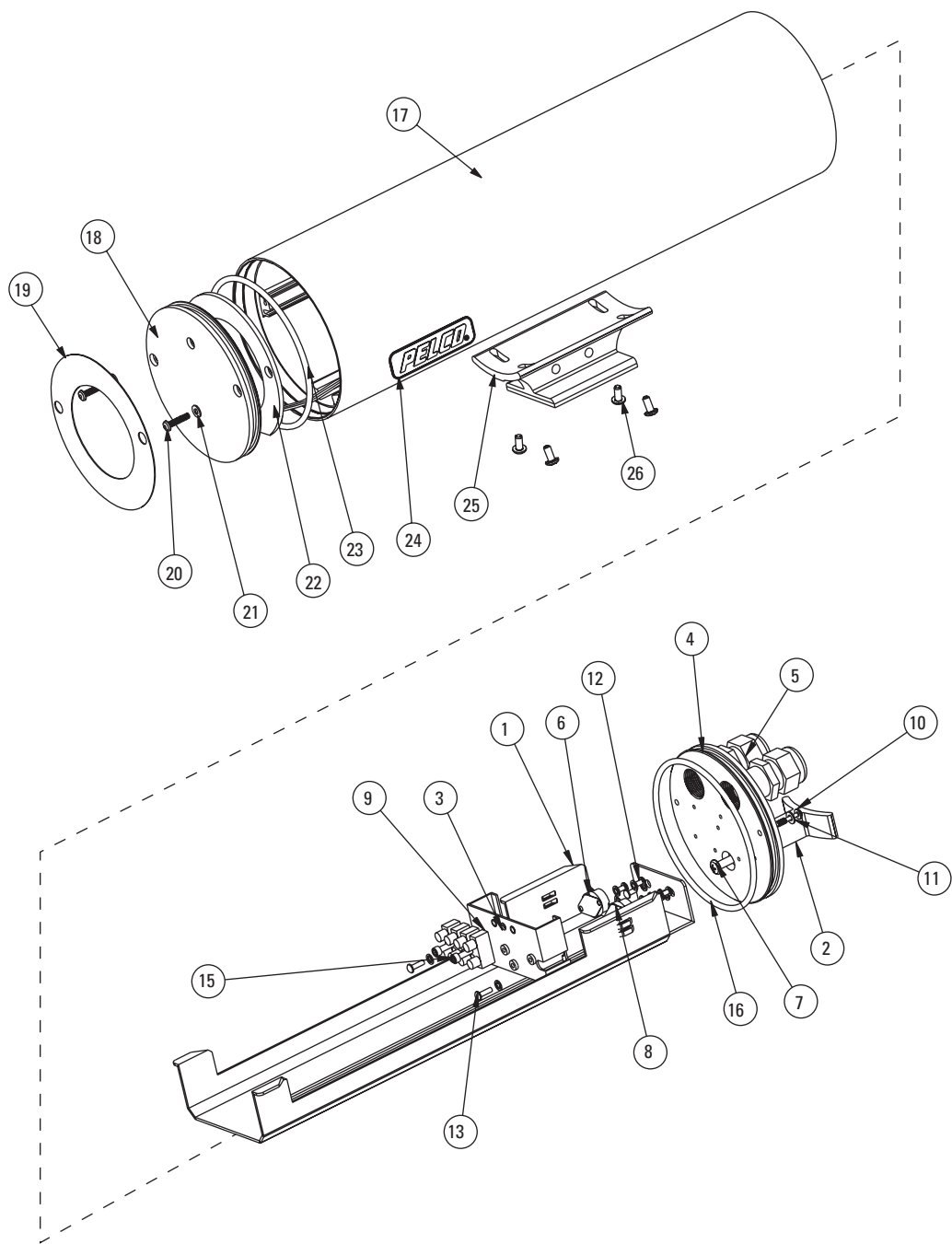


Figure 1. EH2500 Series Exploded Assembly Diagram

Table A. EH2500 Series Exploded Assembly Parts List

Item	Qty	Description	Part Number
1	1	Camera sled, EH2508	EH2584300COMP
	1	Camera sled, EH2512	EH25124300COMP
	1	Camera sled, EH2515	EH25154300COMP
2	1	T-handle	EH2584202COMP
3	1	Terminal bracket*	EH2584901COMP
4	1	Rear plate	EH2584902COMP
5	2	Liquid-tight fitting	HF00-1300-3500
6	1	Thermostat*	TH01-6040-0101
7	1	Self-sealing fastener, 10-24 x 0.750-inch	EHP10001
8	1	Thermostat*	TH01-8570-0100
9	1	Terminal block, four-position*	TB05-0417-0001
10	2	Screw, 6-32 x 5/8-inch, button head, captive	ZH00-0813-0716
11	2	Nylon washer, #6	ZH150X310X32N
12	6	4-40 x 1/4-inch, Phillips pan head screw and lock washer*	ZH01-2001-0403
13	2	4-40 x 3/8-inch, Phillips pan head screw and lock washer*	ZH01-2001-0405
14		N/A	
15	2	Screw, 6-32 x 5/8-inch, socket head cap	ZH6-32X.625CS
16	1	O-ring	ZH69-0205-2404
17	1	Housing, EH2508	EH2584102COMP
	1	Housing, EH2512	EH25124102COMP
	1	Housing, EH2515	EH25154102COMP
18	1	Window	MF00-2580-001A
19	1	Cosmetic decal	OL01-0023-0001
20	2	Screw, captive, 6-32 x 5/8-inch, button head, socket	ZH00-0813-0716
21	2	Nylon washer, #6	ZH150X310X32N
22	1	Dual-element window heater, 120 VAC*	HT01-0012-0204
	1	Dual-element window heater, 24 VAC*	HT01-0022-0204
	1	Dual-element window heater, 230 VAC*	HT01-0032-0204
23	1	O-ring	ZH69-0205-2404
24	2	Pelco label	LBLG10020
25	1	Mount	EH2584200COMP
26	4	Screw, 8-32 x 3/8-inch, button head, hex socket	ZH01-0401-0805
*Available only with models that have heaters.			

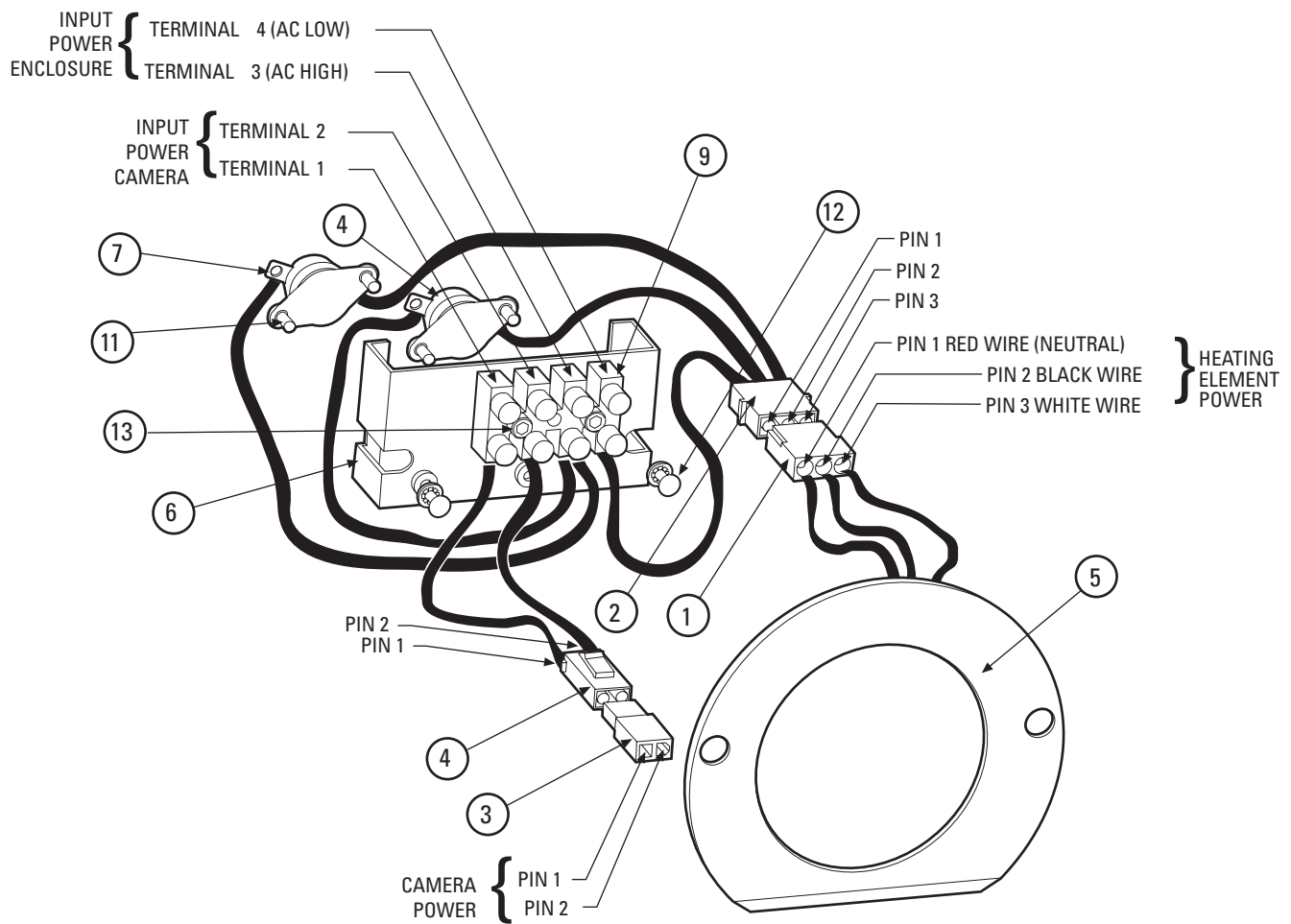


Figure 2. EH2500 Series Wiring Diagram

Table B. EH2500 Series Wiring Diagram Parts List

Item	Qty	Description	Part Number
1	1	Connector, three-pin plug	CN16-1820-0003
2	1	Connector, three-pin cap	CN16-5821-0003
3	1	Connector, two-pin plug (camera power)	CN16-1820-0002
4	1	Connector, two-pin cap	CN16-2821-0002
5	1	Dual-element window heater, 120 VAC	HT71-0012-204
	1	Dual-element window heater, 24 VAC	HT72-0022-204
	1	Dual-element window heater, 230 VAC	HT73-0032-204
6	1	Terminal bracket	EH2584901COMP
7	1	Thermostat	TH01-6040-0101
8	1	Thermostat	TH01-8570-0100
9	1	Terminal block, four-position	TB05-0417-0001
10		N/A	ZH4LWSIS
11	4	4-40 x 1/4-inch, Phillips pan head screw and lock washer	ZH01-2001-0403
12	2	4-40 x 3/8-inch, Phillips pan head screw and lock washer	ZH01-2001-0405
13	2	Screw, 6-32 x 5/8-inch, socket head, cap	ZH6-32X.625CS
--	1	6-32 thumbnut (not shown)	ZH6-32THUMNUT

PRODUCT WARRANTY AND RETURN INFORMATION

WARRANTY

Pelco will repair or replace, without charge, any merchandise proved defective in material or workmanship **for a period of one year** after the date of shipment.

Exceptions to this warranty are as noted below:

- Five years on fiber optic products and TW3000 Series unshielded twisted pair transmission products.
- Three years on Spectra® IV products.
- Three years on Genex® Series products (multiplexers, server, and keyboard).
- Three years on Camclosure® and fixed camera models, except the CC3701H-2, CC3701H-2X, CC3751H-2, CC3651H-2X, MC3651H-2, and MC3651H-2X camera models, which have a five-year warranty.
- Three years on PMCL200/300/400 Series LCD monitors.
- Two years on standard motorized or fixed focal length lenses.
- Two years on Legacy®, CM6700/CM6800/CM9700 Series matrix, and DF5/DF8 Series fixed dome products.
- Two years on Spectra III™, Esprit®, ExSite®, and PS20 scanners, including when used in continuous motion applications.
- Two years on Esprit and WW5700 Series window wiper (excluding wiper blades).
- Two years (except lamp and color wheel) on Digital Light Processing (DLP®) displays. The lamp and color wheel will be covered for a period of 90 days. The air filter is not covered under warranty.
- Eighteen months on DX Series digital video recorders, NVR300 Series network video recorders, and Endura™ Series distributed network-based video products.
- One year (except video heads) on video cassette recorders (VCRs). Video heads will be covered for a period of six months.
- Six months on all pan and tilts, scanners or preset lenses used in continuous motion applications (that is, preset scan, tour and auto scan modes).

Pelco will warrant all replacement parts and repairs for 90 days from the date of Pelco shipment. All goods requiring warranty repair shall be sent freight prepaid to Pelco, Clovis, California. Repairs made necessary by reason of misuse, alteration, normal wear, or accident are not covered under this warranty.

Pelco assumes no risk and shall be subject to no liability for damages or loss resulting from the specific use or application made of the Products. Pelco's liability for any claim, whether based on breach of contract, negligence, infringement of any rights of any party or product liability, relating to the Products shall not exceed the price paid by the Dealer to Pelco for such Products. In no event will Pelco be liable for any special, incidental or consequential damages (including loss of use, loss of profit and claims of third parties) however caused, whether by the negligence of Pelco or otherwise.

The above warranty provides the Dealer with specific legal rights. The Dealer may also have additional rights, which are subject to variation from state to state.

If a warranty repair is required, the Dealer must contact Pelco at (800) 289-9100 or (559) 292-1981 to obtain a Repair Authorization number (RA), and provide the following information:

1. Model and serial number
2. Date of shipment, P.O. number, Sales Order number, or Pelco invoice number
3. Details of the defect or problem

If there is a dispute regarding the warranty of a product which does not fall under the warranty conditions stated above, please include a written explanation with the product when returned.

Method of return shipment shall be the same or equal to the method by which the item was received by Pelco.

RETURNS

In order to expedite parts returned to the factory for repair or credit, please call the factory at (800) 289-9100 or (559) 292-1981 to obtain an authorization number (CA number if returned for credit, and RA number if returned for repair).

All merchandise returned for credit may be subject to a 20% restocking and refurbishing charge.

Goods returned for repair or credit should be clearly identified with the assigned CA or RA number and freight should be prepaid. Ship to the appropriate address below.

If you are located within the continental U.S., Alaska, Hawaii or Puerto Rico, send goods to:

Service Department
Pelco
3500 Pelco Way
Clovis, CA 93612-5699


If you are located outside the continental U.S., Alaska, Hawaii or Puerto Rico and are instructed to return goods to the USA, you may do one of the following:

If the goods are to be sent by a COURIER SERVICE, send the goods to:

Pelco
3500 Pelco Way
Clovis, CA 93612-5699 USA

If the goods are to be sent by a FREIGHT FORWARDER, send the goods to:

Pelco c/o Expeditors
473 Eccles Avenue
South San Francisco, CA 94080 USA
Phone: 650-737-1700
Fax: 650-737-0933

 The materials used in the manufacture of this document and its components are compliant to the requirements of Directive 2002/95/EC.

REVISION HISTORY

Manual #	Date	Comments
C1473SM-A	9/98	Original version.
	7/00	Revised Figure 2 and Table B for new heater elements per ECO# 00-6032.
C1473SM-B	9/04	Revised parts list per ECO# 04-9848. Product redesigned to fit CC3610/CC3710/CC3770/MC3610/MC3710 Series cameras.
C1473M-C	4/07	Revised parts list per ECO 05-13394. Updated part numbers.

Pelco, the Pelco logo, Camclosure, Esprit, Endura, Genex, Legacy, and Spectra are registered trademarks of Pelco.
ExSite and Spectra III are trademarks of Pelco.
DLP is a registered trademark of Texas Instruments, Inc.

© Copyright 2007, Pelco. All rights reserved.



Worldwide Headquarters
3500 Pelco Way
Clovis, California 93612 USA

USA & Canada
Tel: 800/289-9100
Fax: 800/289-9150

International
Tel: 1-559/292-1981
Fax: 1-559/348-1120

www.pelco.com

ISO9001

Australia | Canada | Finland | France | Germany | Italy | Macau | The Netherlands | Russia | Singapore
South Africa | Spain | Sweden | United Arab Emirates | United Kingdom | United States