



Wireless Handheld Outdoor **Color** Security System

COMPLETE SYSTEM



Instruction Manual



Model #
GX5203
www.svat.com

PRODUCT WARRANTY & REGISTRATION

Please visit our website at www.svat.com to apply for your products warranty registration.

The warranty registration for is located under the support tab on the SVAT website.

We take quality very seriously. This is why all of our products come with a one year warranty from the original purchase date against defects in workmanship and materials.

If you have warranty or support issues please contact us using any of the following methods:

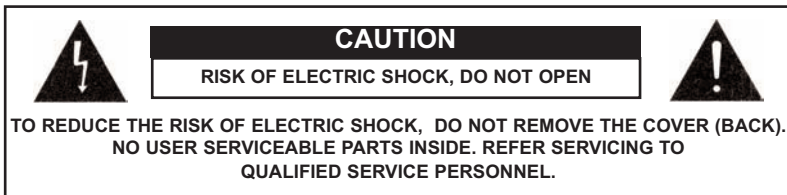
SVAT Electronics USA
2315 Whirlpool St., Unit 333
Niagara Falls, New York
USA 14305

SVAT Electronics Canada
4080 Montrose Road
Niagara Falls, ON
Canada L2H 1J9

Phone: 866.946.7828
Fax: 888.771.1701
Email: support@svat.com
Website: www.svat.com

Warranty Terms

- SVAT products are guaranteed for a period of one year from the date of purchase against defects in workmanship and materials. This warranty is limited to the repair, replacement or refund of the purchase price at SVAT's option.
- When service is required, the warranty is validated by the submission of a fully completed warranty card.
- This warranty becomes void if the product shows evidence of having been misused, mishandled or tampered with contrary to the applicable instruction manual.
- Routine cleaning, normal cosmetic and mechanical wear and tear are not covered under the terms of this warranty.
- The warranty expressly provided for herein is the sole warranty provided in connection with the product itself and no other warranty, expressed or implied is provided. SVAT assumes no responsibilities for any other claims not specifically mentioned in this warranty.
- This warranty does not cover the shipping cost, insurance or any other incidental charges.
- You MUST call SVAT before sending any product back for repair. You will be given a Return Authorization number. When returning the product for warranty service, please pack it carefully in the original box with all supplied accessories, and enclose your original receipt or copy, and a brief explanation of the problem (include RA #).
- This warranty is valid only in Canada and the U.S.A.
- This warranty card cannot be re-issued.



Graphic Symbol Explanation:



The lightning flash with arrowhead symbol, within an equilateral triangle, is intended to alert the user to the presence of uninsulated "dangerous voltage" within the product's enclosure that may be of sufficient magnitude to constitute a risk of electric shock to persons.



The exclamation point within an equilateral triangle is intended to alert the user to the presence of important operating maintenance (servicing) instructions in the literature accompanying the appliance.

WARNING: TO PREVENT FIRE OR SHOCK HAZARDS, DO NOT EXPOSE THIS UNIT TO RAIN OR MOISTURE

TABLE OF CONTENTS

WHAT IS INCLUDED	1
WHAT IS COMPATIBLE	1
FEATURES	2
THINGS TO CONSIDER	2
INSTALLING THE CAMERA	3
INSTALLING THE MONITOR.....	3
AVOIDING INTERFERENCE	4
ADVANCED FEATURES	4
OPERATING MODES	5
CONNECTING TO A VCR	5
MONITOR FUNCTIONS.....	6
TROUBLESHOOTING	7
SPECIFICATIONS.....	8 - 9

WHAT IS INCLUDED



1 LCD Monitor



1 Color Camera



Mounting Bracket

- Mounting Hardware
- 1 Year Warranty
- Instruction Manual
- Online/Toll Free Tech Support



Portable Battery Clip



3.5mm to RCA
(male) Wire



2 Power Adapters

WHAT IS COMPATIBLE

The GX5203 is compatible with TVs, VCRs, DVRs, computers and other SVAT systems including:



WSE201C



WSE103C



GX515



GX517



Any TV or VCR

Congratulations on your purchase of the GX5203. The GX5203 consists of a wireless LCD monitor/receiver and a wireless bullet-hole camera, and is an ideal product for covert monitoring in your home or business.

FEATURES

- 2.4GHz wireless technology
- Bullet-hole color camera with night vision
- 2.5" TFT-LCD screen
- The LCD monitor has 3 modes: Scan, Auto, and Manual
- Adjustable brightness, color, contrast, alarm volume and audio volume
- Monitor can be connected to a VCR/DVR using the A/V output port
- Camera meets IP54 standard for outdoor use
- Expandable - supports up to 3 cameras
- Manual or auto switching between cameras
- Adjustable cycle time cameras
- Battery operable for portable monitoring

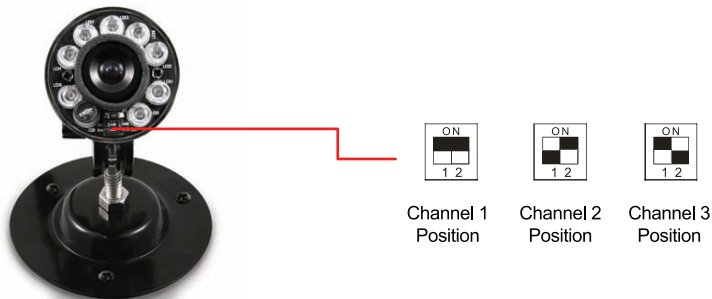
THINGS TO CONSIDER BEFORE INSTALLATION

For best performance, follow these simple guidelines:

- Camera(s) should be installed between 8 and 13 feet above the area to be monitored
- For best transmission, avoid installations where there are thick walls or major obstructions between the camera and the LCD monitor.
- Ensure there are no obstructions in the camera's view, to maximize viewing area.

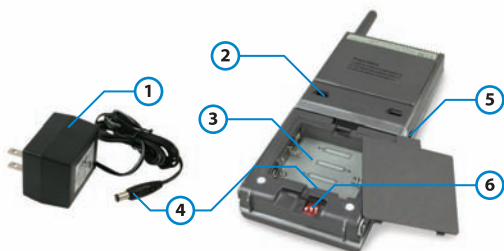
INSTALLING THE CAMERA (TRANSMITTER)

1. Unpack the camera.
2. The camera's channel number can be set by unscrewing the lens part of camera to open the lens cover, and adjusting the dip switches.



3. Decide whether the camera will be wall-mounted or sit on a desk/table top. If wall mounting, use the mounting hardware in the package. The camera can be adjusted for either mounting scenario by rotating the camera to the required position.
4. If using the 9V camera power adapter, just connect power jack. Make sure the camera is positioned no more than 5 1/2 feet from an AC power outlet.

INSTALLING THE LCD MONITOR



1. LCD monitor adapter
2. Key holes for wall mounting
3. Battery Compartment
4. Connect adapter to power jack
(Located inside battery compartment)
5. Audio/Video output port
6. Channel activation

Main Operation

1. Plug the monitor's power supply into the power jack located inside the battery compartment of the monitor. The monitor can also be operated using 4-AAA batteries. Note: It is recommended that you use the provided AC adapter to power the monitor. Batteries are recommended for portability and can last up to 200 minutes.
2. Turn on the monitor by pressing the power button on the top of the unit.
3. To connect the monitor to a VCR or DVR for recording purposes, use the 3.5mm to RCA wire and connect the appropriate end to the A/V output port on the monitor, and the other corresponding ends to the audio and video inputs of the VCR/DVR.

Avoiding Interference

The 2.4 GHz video signals pass easily through your home's interior walls, but the signal may be reflected by power wires or plumbing inside the wall. If reception is poor, moving the camera or monitor may fix this problem. Houses with steel frames may experience interference as well. Microwave ovens, cordless phones and wireless routers are the most common sources of interference. Try to avoid mounting the monitor near these or other sources of RF interference.

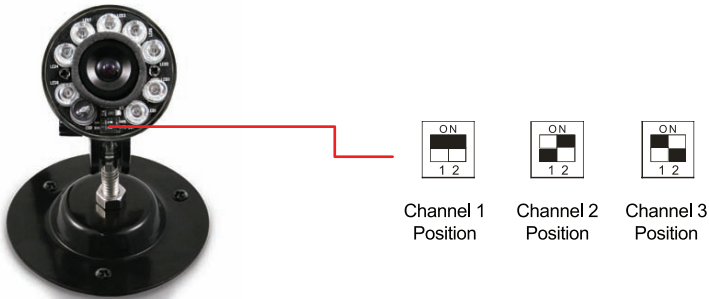
ADVANCED FEATURES

Multi-Camera Operation

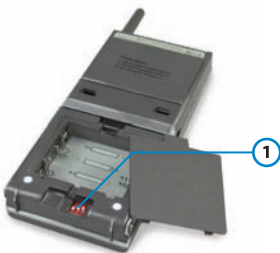
The GX5203 is designed to work with up to 3 cameras. Additional cameras are sold separately (indoor - WSE103C / outdoor - WSE201C).

*IMPORTANT

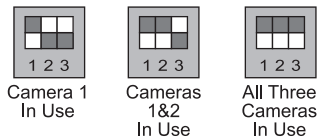
When using more than one camera, make sure you assign each camera a specific channel (1-3). The channel switch is located on the front of the camera.



Accordingly the DIP switch located on the back of the monitor should be adjusted to reflect the channel in use.



1. Monitor channel activation



OPERATING MODES

The system can be set to operate in one of 3 modes: SCAN, AUTO or MANUAL. The desired operating mode can be selected using the buttons on the front panel of the monitor.

Scan

Pressing the SCAN button places the system in scan mode. The monitor's screen will go blank (standby mode) while the system continuously scans active cameras. Press the MANUAL or AUTO button to cancel this mode.

Auto

Pressing the AUTO button places the system into auto mode. In this mode, the system automatically rotates through all active cameras. To avoid searching the channels that do not have cameras/transmitters assigned to them, set those corresponding dip switches (located on the back panel of the monitor) to the OFF position.

The dwell/cycle time (time taken to switch between cameras) is preset to four seconds and can be adjusted between 2-30 seconds. To adjust the dwell/cycle time, hold down both the AUTO and MANUAL buttons simultaneously. The monitor will chime for each second it is adding to the dwell time. Release the buttons, and the LED light will flash for each second that was added to the dwell time. Increasing the dwell/cycle time past 30 seconds will revert it back to 2 seconds.

Manual

To view a specific camera on the monitor, press the MANUAL button. The monitor will switch to a different camera each time the MANUAL button is pressed. To avoid searching the channels that do not have cameras assigned to them, set those corresponding dip switches (located on the back panel of the monitor) to the OFF position.

CONNECTING TO A VCR

You can connect a VCR to the system to allow recording of your camera footage. To connect the receiver to a VCR for recording purposes, use the RCA adapter cable and connect the appropriate ends to the A/V Out jack on the receiver, and the other corresponding ends to the audio and video inputs of the VCR.

MONITOR FUNCTIONS



1. Volume Button
2. Alarm Volume Adjustment
3. Power Button
4. Menu + Button
5. Main Menu Button
6. Menu - Button
7. Scan Button
8. Auto Button
9. Manual Button

Power

- Press to turn the monitor on/off

Alarm Volume

- The ALARM VOLUME of the monitor can be changed by adjusting the Alarm Volume Tuner located on the top of the monitor.

Volume

- The sound level can be adjusted by pressing the + or - buttons on the front of the monitor.

Menu

- Press the Menu button to get the following options:
- LED on, adjust brightness using + or -
- LED flashing, adjust color using + or -
- LED off, adjust contrast using + or -

TROUBLESHOOTING

If you are having trouble operating this product, please consult the guide below.

Symptom	Remedies
No camera Picture	<ol style="list-style-type: none"> 1. Check all connections and AC adapters. Make sure camera(s) and monitor are switched ON. 2. Ensure camera(s) and monitor are set to correct channels. 3. Make sure camera is within range of the monitor.
Blank Monitor	<ol style="list-style-type: none"> 1. Make sure the monitor is switched ON. 2. If using the AC adapter, make sure it is plugged in. 3. Make sure the rechargeable battery is charged. 4. Make sure the camera's AAA batteries are charged.
Interference on Camera Picture	<ol style="list-style-type: none"> 1. Make sure each camera is within range, and that no obstructions are blocking the signal. 2. Try repositioning the camera, monitor, or both to improve the reception quality. 3. Reposition other nearby equipment transmitting on the 2.4 GHz frequency.
Audio problems	<ol style="list-style-type: none"> 1. Ensure the volume is turned up sufficiently on the monitor. 2. Make sure the sound is within the microphone range. 3. If the unit emits a loud wailing sound (feedback), try moving the camera away from the monitor or angle the Monitor differently.

SPECIFICATIONS

INDOOR MONITOR

Number of Cameras Supported	3
Monitor Type	Color TFT-LCD
Screen Size	2.5"
Wireless Frequency.....	2.4GHz
Channel Frequencies	2.414, 2.432, 2.468
Number of Cameras Supported	3
Output Terminal	1CH RCA Out
Resolution	480 x 284 Pixels
Speaker	Yes
Motion Activated Alert	Compatible
Audio Activated Alert	Compatible
Auto-Scanning.....	Yes
Battery Operable	Yes, 4 x AAA
	Rechargeable Battery (optional - GX519B)
Self Charging.....	No
Handheld	Yes
Video On/Off Button	No
Adjustable Contrast	Yes
Adjustable Brightness	Yes
Adjustable Color	Yes
Adjustable V-Hold	No
Operating Temperature	14°F ~ 140°F
Operating Humidity	85%
Housing Material	ABS Plastic
Housing Color	Graphite Grey
Monitor Power Input	DC 9V 800mA
Power Adapter Input	AC 120V 60Hz
Dimensions	7" x 2.75" x 1"
Weight	0.4lbs

OUTDOOR CAMERA

Image Sensor	1/4" CMOS Color
Outdoor Use	Yes
IP Rating	IP54
Maximum Wireless Range (Line of Sight)	300ft
Optimum Wireless Range (Line of Sight).....	100ft
Wireless Frequency.....	2.4GHz
Wireless Channel Frequencies	2.414, 2.432, 2.468
Resolution	360 Horizontal TV Lines
Night Vision	Yes
Number of IR LEDs and Range	8, up to 10ft
IR LED Control	Auto, CDS Sensor
Min. Illumination	0 lux
Battery Operable	Yes, 9V
Viewing Angle	69 Degrees
TV System.....	NTSC
Focal Length	6.0mm
Focus Type	Fixed
Microphone	Yes
Motion Detection	No
Audio Activation.....	No
Sun Shield.....	No
Housing Material	Aluminum
Housing Color	Midnight Black
Electronic Shutter Speed	1/60 - 1/15,000 sec
Signal/Noise Ratio.....	48dB
Power LED Indicator	No
Camera Bracket	Yes
Operating Temperature	-4°F ~ 104°F
Operating Humidity	85%
Camera Power Input	DC 9V 300mA
Power Adapter Input	AC 120V 60Hz
Dimensions	3.25" x 1.25" x 1.25"
Weight	0.2lbs

SVAT SUPPORTS CRIME STOPPERS

Crime Stoppers programs are operated as non-profit charities and are managed by a volunteer board of directors who raise funds and pay rewards to individuals who anonymously call with information that helps solve crime.

Rewards are paid for tips that lead to the arrest and indictment of people charged with felony offenses, and to date Crime Stoppers statistics show a conviction rate of approximately 95%.

To receive more information about Crime Stoppers or to make a charitable donation please fill in the fields on the back of this page, cut on the dotted line and mail in.



CRIME STOPPERS INTERNATIONAL

P.O. Box 614
Arlington, Texas
U.S.A 76004-0614

SVAT SUPPORTS CRIME STOPPERS

To receive more information about Crime Stoppers or to make a charitable donation please fill in the fields below, cut on the dotted line and mail in.



CRIME STOPPERS INTERNATIONAL

Crime Stoppers International is an organization of community based civilian Crime Stoppers programs, which assist police in solving crime. You can find more information about Crime Stoppers at www.c-s-i.org

Local Crime Stoppers programs are partnerships between the public, media and local policing organizations. Each program is run by a citizen board, whose purpose is to advertise a local telephone number, which anonymous persons can call with information regarding a crime. Callers (tipsters) may be eligible for a cash reward for their information.

If your community does not have a Crime Stoppers program and would like information about starting one, return this card with the following information.

NAME: _____ PHONE: _____

ADDRESS: _____ CITY: _____

PROV/STATE: _____ COUNTRY: _____ POSTAL/ZIP CODE: _____

E-MAIL ADDRESS: _____

Charitable donations can be made to "CSI" by returning this card in an envelope with your check or money order to the address on the other side.

THANK YOU

Amount \$ _____



www.svat.com

Disclaimer

SVAT does not endorse any of SVAT products for any illegal activities. SVAT is not responsible or liable in any way shape or form for any damage, vandalism, theft or any other action that may occur while a SVAT product is in use by the purchaser.



GigaXtreme

Model #
GX5203
www.svat.com