

# Wireless Motion Sensor

Model PS-103

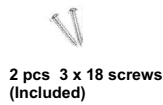
## 1. INTRODUCTION

The Motion Sensor is designed to monitor movement around / within your house. Once motion is detected, the control panel will either alert you or alarm will be triggered.

In this package, you should find a motion sensor, ball-head joint, and screws.



Motion Sensor



2 pcs 3 x 18 screws (Included)

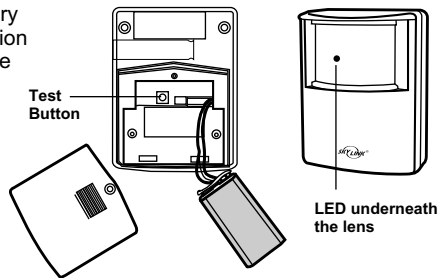


Ball-head joint

Please follow the instructions below to set up the motion sensor.

## 2. POWER UP THE WIRELESS MOTION SENSOR

Insert a 9V alkaline battery (Not included) to the motion sensor and its LED will be on for 2 seconds.



## 3. LEARN SENSOR TO MA SERIES CONTROL PANEL

Control Panel will not respond to Motion Sensor unless:

- 1) The Control Panel is armed in Away Mode, it will respond to Motion Sensors in Zones 1, 2 and 3;
- 2) Motion Sensor is programmed into Zone 4, which is a dedicated Alert Zone.

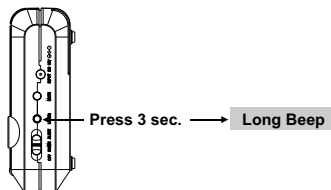
It is important to select which zone you program the motion sensor to.

- If you setup the motion sensor for security purpose where it will cause an alarm when an intruder break-in, you should program the Motion Sensor to either Zone 1, 2 or 3. DO NOT program to Zone 4 as it is a dedicated Alert Zone, sensors in this zone will not cause an alarm.

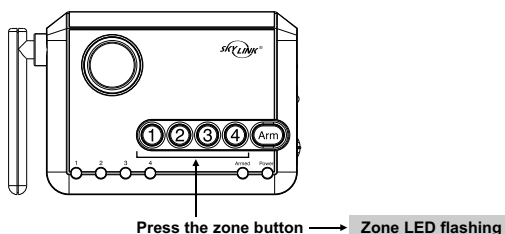
- If you setup the motion sensor for alert purpose where it does not need to cause an alarm when motion is detected, you should program the Motion Sensor to Zone 4. DO NOT program to Zone 1, 2, or 3 as Motion Sensor in these zones will not provide any alert beeping indication.

Therefore, please select which zone you need to program the Motion Sensor before proceeding further.

**Step 1:**  
Press and hold the Learn Button on the Control Panel for 3 seconds. Control Panel beeps once and you may release the Learn Button.

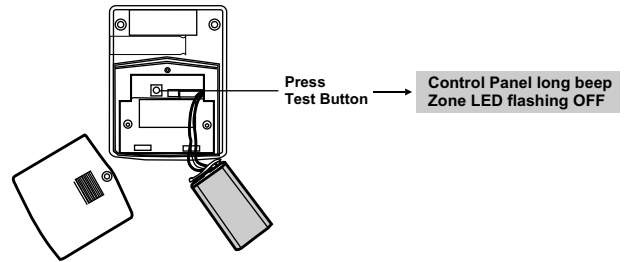


**Step 2:**  
Press the zone button (1, 2, 3, or 4) once, for which you want to program the sensor to. The selected Zone LED will flash.



## 3. LEARN SENSOR TO MA SERIES CONTROL PANEL (CONT)

**Step 3:**  
Activate the Motion Sensor by pressing the test button on the back of the Motion Sensor.



**Step 4:**  
You will hear a long beep and the zone LED stops flashing. The sensor is now programmed to the Control Panel.

**Note:**

*You may program up to 4 sensors to one zone.*

*Zone 4 is an alert zone, sensors in this zone is for alert purpose ONLY and will not trigger the alarm.*

### Test Sensor

After programming the motion sensor to the Control Panel, you may place the Control Panel in Test Mode to verify the communication between the Motion Sensor and the Control Panel.

**Step 1:**  
Remove the adapter and all batteries from the Control Panel.

**Step 2:**  
Press and hold the "Mute" button and plug the AC adapter back into the Control Panel. All LED indicators will be ON, you may release the "Mute" button. Control Panel is now in Test Mode, and it will respond to all Motion Sensors and other sensors.

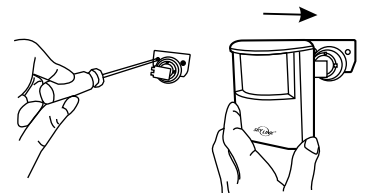
**Step 3:**  
Place the Alert Notification Switch to "Alert" and you may now activate the Motion Sensor by pressing the test button on the back of the Motion Sensor. You may also move in front of the Motion Sensor. Please refer to "Walk Testing" for detail information on how to walk test the Motion Sensor.

**Step 4:**  
Control Panel will respond by flashing the zone LED and alert beeping, according to the zone number. 1 beep for zone 1, 2 beeps for zone 2 etc. The beeping will last around 15 seconds for each activation.

After testing, unplug the AC adapter and plugs it back into the Control Panel, it will back to Normal Operating Mode.

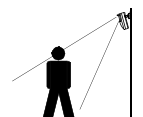
## 4. INSTALLATION

You may now close the battery cover and re-insert the screw. Mount the ball-head joint on the wall with screws provided. Slide the back of the sensor into the ball-head joint. The mounting angle can be adjusted.



### Walk Testing

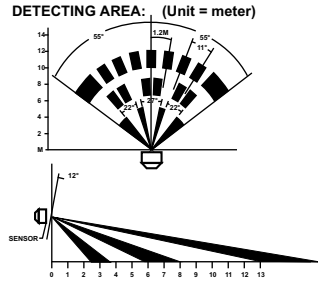
Walk test should be performed after the motion sensor is mounted. Walk in the detected area, if motion is detected, a red light inside the sensor will glow. If the red light does not glow, motion has not been detected and you may need to re-position the sensor. Ensure you walk test all the locations that you would like the motion sensor to cover.



## 4. INSTALLATION (CONT)

### Note:

- Perform the walk test after you have inserted the battery for more than 1 minute.
- Before performing the walk test, the sensor should not detect any motion.
- After motion is detected once, the sensor will not be triggered unless no motion is detected for 20 seconds. Therefore, wait for at least 20 seconds during walk testing between 2 activations.



### False Trigger:

If you experience false triggering, please pay attention to the following.

- When installing the motion sensor, avoid placing it near heat or cold producing devices (i.e. A/C or furnace vents, fans, ovens, space heaters, etc). Air movement, especially caused by changes in temperature may trigger the Motion Sensor and cause false alarms. Please carefully test your Motion Sensor so that it will only be triggered by wanted movement.
- There is a jumper for sensitivity setting. You may change the sensitivity to low if you experience false triggering.

Jumper Location 1	High Sensitivity
Jumper Location 2	Low Sensitivity

## 5. OPERATION

The motion sensor is designed to detect the "First Motion". First Motion means the first movement picked up after 20 seconds without motion detected. So if you continue to walk in front of the motion sensor, it will only pick up the first motion. Unless you wait for 20 seconds, then walk again, the control panel will respond. Otherwise, the control panel will only respond to the first motion.

## 6. SENSOR FAILURE / LOW BATTERY INDICATION

The control panel constantly monitors its sensors, if the control panel fails to communicate with any sensors, it will begin rapidly flashing the zone LED indicator.

When sensor failure occurs, try the following:

1. Check if the sensor is located at where it should be, and whether there is any physical damage to the sensor.
2. If the failed sensor is not physically damaged, try to activate the sensor and see if the control panel reacts to such activation.
3. If not, try to remove the sensor from its location, and bring it closer to control panel and activate the sensor. It is possible that the sensor is installed too far from the control panel and it cannot establish a steady communication with the control panel. If this is the case, please install the sensor closer to the control panel.
4. Replace the battery of the sensor in that zone if the Control Panel does not respond when the sensor is activated within short range.

If you have multiple sensors in a zone, you may test the function of each sensor to identify which sensor is having problem.

## 7. OTHER MA SERIES ACCESSORIES

The MA Series control panel can work with different accessories include: Door/Window Sensor, Keychain Remote, Water Sensor, External Keypad, Audio Alarm, Emergency Dialer, etc. Please visit [www.skylinkhome.com](http://www.skylinkhome.com) or contact us at [support@skylinkhome.com](mailto:support@skylinkhome.com) for more information of how to fully utilize your Wireless Alarm System - MA Series.

## 8. CE

### Declaration of Conformity

This equipment complies with the requirements relating to electromagnetic compatibility, EN 301489-3:2002, EN300220-2:2007, EN60950-1:2006, EN50371:2002. This equipment conforms to the essential requirement of the Directive (1999/5/EC) of the European Parliament and of the Council.

## 9. WARRANTY

If, within one year from date of purchase, this product should become defective (except battery), due to faulty workmanship or materials, it will be repaired or replaced, without charge. Proof of purchase and a Return Authorization are required.

## 10. CUSTOMER SERVICE

If you would like to order Skylink's products or have difficulty getting them to work or download latest information and user manual, please :

1. visit our FAQ section at [www.skylinkhome.com](http://www.skylinkhome.com), or
2. email us at [support@skylinkhome.com](mailto:support@skylinkhome.com)



### CUSTOMER SERVICE

Rm 1303, Block B, Veristrong Industrial Centre,  
36 Aupuiwan Street, Fotan, N.T. Hong Kong.  
Email: [sales@skylinkhome.com](mailto:sales@skylinkhome.com)  
<http://www.skylinkhome.com>  
P/N. 101Z684  
©2009 SKYLINK GROUP