



C360SM-A (3/02) PS30A and PS30-24 Scanners

3500 Pelco Way
Clovis, CA 93612-5699
USA

In North America & Canada:
Tel (800) 289-9100
FAX (800) 289-9150

International Customers:
Tel +1(559) 292-1981
FAX +1(559) 348-1120

www.pelco.com

This maintenance/service manual consists of an exploded assembly diagram and parts lists. Use this manual when ordering replacement parts for PS30A/PS30-24 Scanners.

MAINTENANCE

Under normal operating conditions and usage, maintenance of this equipment is not necessary. The PS30A and PS30-24 Scanners require no lubrication, and the motors are both clutch and impedance protected from overload. The outside of the scanner can be cleaned by wiping with a dry cloth or spraying with clean air pressure. **Do not use** spray cleaners or water.

EXPLODED ASSEMBLY DIAGRAM

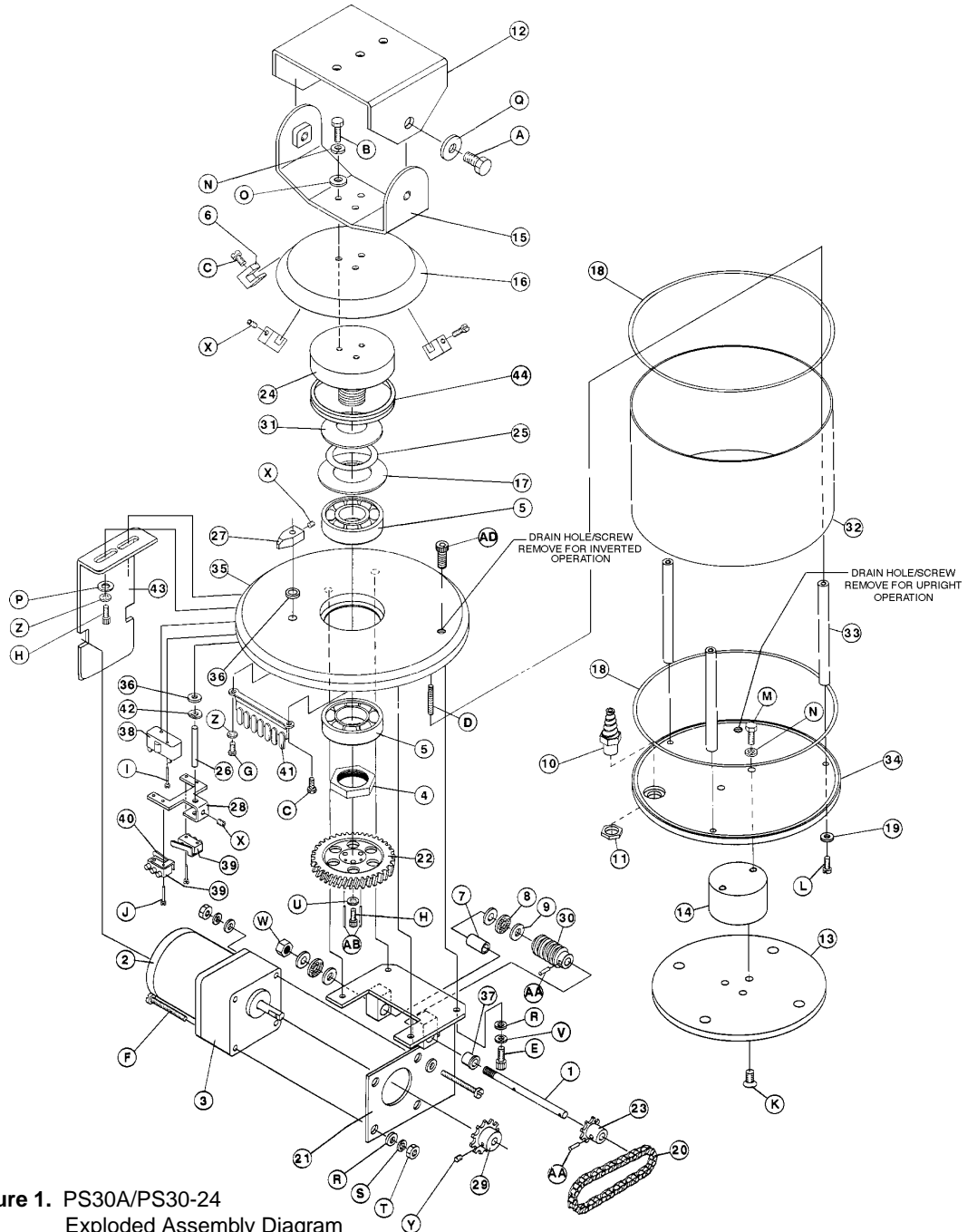


Figure 1. PS30A/PS30-24
Exploded Assembly Diagram

Table A. Mechanical Parts List

Item	Qty	Description	Part Number
1	1	Gear train shaft	1754064COMP
2	1	Motor, 24 VAC (PS30-24)	5708008
		Motor, 120 VAC (PS30A)	1758008
3	1	Motor gear head	1758009
4	1	Spindle nut	2504012COMP
5	2	Pan spindle bearing	2506000
6	3	Limit stop	58010006
7	1	Bearing	5806005
8	2	Bearing cage	776001
9	4	Bearing washer	776002
10	1	Gland	EH300010003
11	1	Nut for EH300010003 gland	EH300010004
12	1	Top bracket	EM224168COMP
13	1	Flange	PM102A4196COMP
14	1	Mounting block	PS204153COMP
15	1	Lower tilt bracket	PS204160COMP
16	1	Dust cover	PS204162COMP
17	1	Drag disk	PS3010000
18	2	O-ring	PS3010001
19	5	Thread sealing washer	PS3010002
20	1	Drive chain	PS301005COMP
21	1	Motor plate weld assembly	PS301007WA
22	1	Worm gear	PS304001COMP
23	1	Gear shaft sprocket	PS304005COMP
24	1	Spindle	PS304006COMP
25	1	Spindle spacer	PS304008COMP
26	1	Limit switch shaft	PS304009COMP
27	1	Limit arm	PS304010COMP
28	1	Limit switch bracket	PS304011COMP
29	1	Motor shaft sprocket	PS304012COMP
30	1	Worm	PS304013COMP
31	1	Spring washer	PS304015COMP
32	1	Cover	PS304102COMP
33	3	Spacer	PS304103COMP
34	1	Bottom plate	PS304104COMP
35	1	Top plate	PS304110COMP
36	2	Friction disk limit	PS710001
37	1	Bushing, 1/4-inch	PT250010005
38	1	Switch	SWI11-314
39	2	Switch	SWI1SM1
40	2	Switch actuator with insulator	SWIJS138B
41	1	Terminal strip, 7-pin	TRS2007
42	1	Spring washer	TV10000
43	1	Heat sink (PS30-24 only)	PS304016COMP
44	1	Spindle seal	PS3010003

Table B. Hardware Parts List

Item	Qty	Description	Part Number
A	2	Bolt, 3/8-16 x .625-inch	ZH3/816X.625CH
B	3	Bolt, 1/4-20 x .625-inch	ZH1/420X.625CH
C	3	Screw, 6-32 x .375-inch, pan head, Phillips	ZH6-32X.375SPP
D	3	Set screw, 10-32 x .75-inch	ZH10-32X.750S
E	4	Allen screw, 10-32 x .5-inch	ZH10-32X.500CS
F	4	Screw, 8-32 x 2.25-inch, pan head	ZH8-32X2.25CRS
G	1	Screw, 6-32 x .25-inch, pan head, Phillips	ZH6-32X.250SPP
H	5	Allen screw, 6-32 x .375-inch	ZH6-32X.375CS
I	2	Screw, 2-56 x .75-inch, pan head, Phillips	ZH2-56X.750SPS
J	4	Screw, 2-56 x .437-inch, pan head, Phillips	ZH2-56X.437SPP
K	3	Screw, 1/4-20 x .75-inch, flat head	ZH1/4-20X.750CFS
L	3	Screw, 10-32 x .75-inch, pan head, Phillips	ZH10-32X.750SPP
M	2	Allen bolt, 1/4-20 x .625-inch	ZH1/420X.625CH
N	5	Split lock washer, .25-inch	ZH1/4LWSSL
O	3	Flat washer, .1875-inch	ZH260X562X65C
P	2	Flat washer, #8	ZH188X435X60C
Q	2	Flat washer, .375-inch	ZH377X880X78
R	8	Flat washer, #10	ZH204X436X60C
S	4	Split lock washer, #8	ZH8LWSSL
T	4	Nut, 8-32	ZH8-32NUTSH
U	3	Split lock washer, #6,	ZH6LWSSL
V	4	Split lock washer, #10	ZH10LWSSL
W	1	Nylon lock nut, 1/4-28	58010007
X	3	Set screw, 6-32 x .1875-inch	ZH6-32X.187S
Y	1	Set screw, 10-32 x .1875-inch	ZH10-32X.187S
Z	3	Internal tooth lock washer, #6	ZH6LWSIS
AA	2	Roll pin, .09375-inch x .5-inch	ZHPIN3/32X1/2R
AB	2	Dowel pin .125-inch x .5-inch	15510003
AC	1	Connector mating assembly, 9-pin (not shown)	1751000COMP
AD	2	Allen screw, 10-32 x .375-inch	ZH10-32X.375CS

WIRING DIAGRAMS AND SCHEMATICS

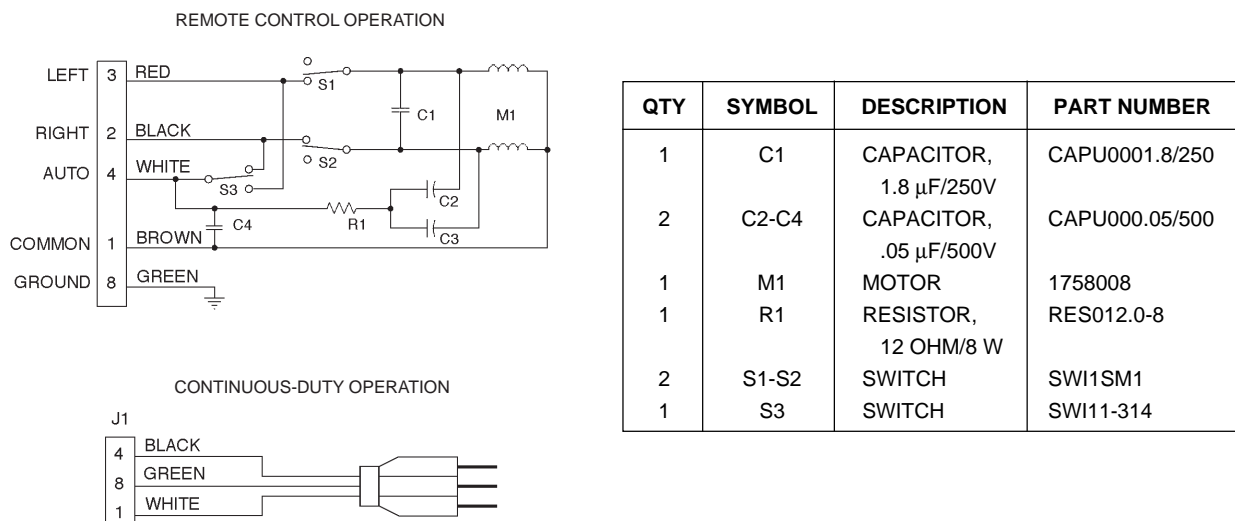
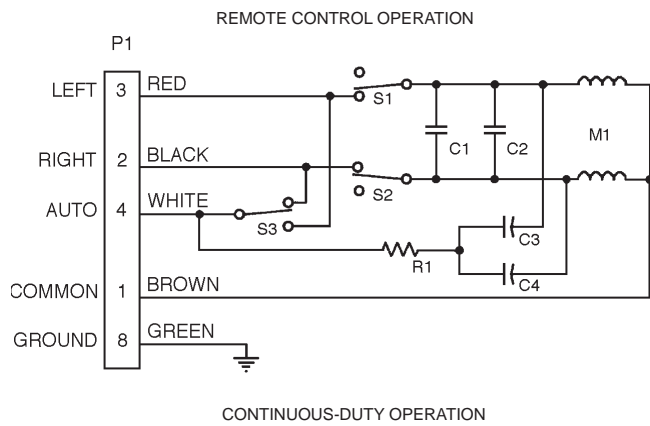


Figure 2. PS30A Schematic and Wiring Diagrams



QTY	SYMBOL	DESCRIPTION	PART NUMBER
2	C1-C2	CAPACITOR, 15 μ F/100V	CAPU0015.0/100N
2	C3-C4	CAPACITOR, .05 μ F/500V	CAPU000.05/500
1	M1	MOTOR	5708008
1	R1	RESISTOR, 10 OHM, 1/2 W	RES010.0-.5
2	S1-S2	SWITCH	SWI1SM1
1	S3	SWITCH	SWI11-314

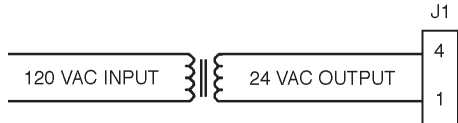


Figure 3. PS30-24 Schematic and Wiring Diagrams

WARRANTY AND RETURN INFORMATION

WARRANTY

Pelco will repair or replace, without charge, any merchandise proved defective in material or workmanship for a period of one year after the date of shipment.

Exceptions to this warranty are as noted below:

- Five years on FT/FR8000 Series fiber optic products.
- Three years on Genex® Series products (multiplexers, server, and keyboard).
- Three years on Camclosure® and fixed camera models, except the CC3701H-2, CC3701H-2X, CC3751H-2, CC3651H-2X, MC3651H-2, and MC3651H-2X camera models, which have a five-year warranty.
- Two years on standard motorized or fixed focal length lenses.
- Two years on Legacy®, CM6700/CM6800/CM9700 Series matrix, and DF5/DF8 Series fixed dome products.
- Two years on Spectra®, Esprit®, ExSite™, and PS20 scanners, including when used in continuous motion applications.
- Two years on Esprit® and WW5700 Series window wiper (excluding wiper blades).
- Eighteen months on DX Series digital video recorders, NVR300 Series network video recorders, and Endura™ Series distributed network-based video products. months on DX Series digital video recorders, NVR300 Series network video recorders, Endura™ Series distributed network-based video products, and TW3000 Series twisted pair transmission products.
- One year (except video heads) on video cassette recorders (VCRs). Video heads will be covered for a period of six months.
- Six months on all pan and tilts, scanners or preset lenses used in continuous motion applications (that is, preset scan, tour and auto scan modes).

Pelco will warrant all replacement parts and repairs for 90 days from the date of Pelco shipment. All goods requiring warranty repair shall be sent freight prepaid to Pelco, Clovis, California. Repairs made necessary by reason of misuse, alteration, normal wear, or accident are not covered under this warranty.

Pelco assumes no risk and shall be subject to no liability for damages or loss resulting from the specific use or application made of the Products. Pelco's liability for any claim, whether based on breach of contract, negligence, infringement of any rights of any party or product liability, relating to the Products shall not exceed the price paid by the Dealer to Pelco for such Products. In no event will Pelco be liable for any special, incidental or consequential damages (including loss of use, loss of profit and claims of third parties) however caused, whether by the negligence of Pelco or otherwise.

The above warranty provides the Dealer with specific legal rights. The Dealer may also have additional rights, which are subject to variation from state to state.

If a warranty repair is required, the Dealer must contact Pelco at (800) 289-9100 or (559) 292-1981 to obtain a Repair Authorization number (RA), and provide the following information:

1. Model and serial number
2. Date of shipment, P.O. number, Sales Order number, or Pelco invoice number
3. Details of the defect or problem

If there is a dispute regarding the warranty of a product which does not fall under the warranty conditions stated above, please include a written explanation with the product when returned.

Method of return shipment shall be the same or equal to the method by which the item was received by Pelco.

RETURNS

In order to expedite parts returned to the factory for repair or credit, please call the factory at (800) 289-9100 or (559) 292-1981 to obtain an authorization number (CA number if returned for credit, and RA number if returned for repair).

All merchandise returned for credit may be subject to a 20% restocking and refurbishing charge.

Goods returned for repair or credit should be clearly identified with the assigned CA or RA number and freight should be prepaid. Ship to the appropriate address below.

If you are located within the continental U.S., Alaska, Hawaii or Puerto Rico, send goods to:

Service Department
Pelco
3500 Pelco Way
Clovis, CA 93612-5699

If you are located outside the continental U.S., Alaska, Hawaii or Puerto Rico and are instructed to return goods to the USA, you may do one of the following:

If the goods are to be sent by a COURIER SERVICE, send the goods to:

Pelco
3500 Pelco Way
Clovis, CA 93612-5699 USA

If the goods are to be sent by a FREIGHT FORWARDER, send the goods to:

Pelco c/o Expeditors
473 Eccles Avenue
South San Francisco, CA 94080 USA
Phone: 650-737-1700
Fax: 650-737-0933

REVISION HISTORY

Manual #	Date	Comments
C360SM	10/99	Original version.
C360SM-A	3/02	Revised limit stop part number in Table A.